

This PDF was generated on 28/01/2022 from online resources of  
the **Qatar Digital Library**

The online record can be viewed at:

[http://www.qdl.qa/en/archive/81055/vdc\\_100023807154.0x000001](http://www.qdl.qa/en/archive/81055/vdc_100023807154.0x000001)

It contains extra information, high resolution zoomable views and transcriptions.

**Drawings of the coast around Aden and along the Red Sea made during  
Elwon's survey to establish the best course for steamers travelling to and  
from Suez by Thomas Elwon (1793/4-1835)**

<b>Holding Institution</b>	British Library: Visual Arts
<b>Reference</b>	WD3533-3536
<b>Date(s)</b>	1829-1834 (CE, Gregorian)
<b>Written in</b>	English in Latin
<b>Extent and Format</b>	9 topographical views on four sheets of paper
<b>Copyright for document</b>	<a href="#">Public Domain</a>



**About this record**

*Genre/Subject Matter:*

A series of coastal profiles in pencil, mostly incomplete, record the survey of the Red Sea undertaken by Captain Thomas Elwon of the *Benares* that took place between 1829-1834 to establish the best course for steamers to and from Suez.

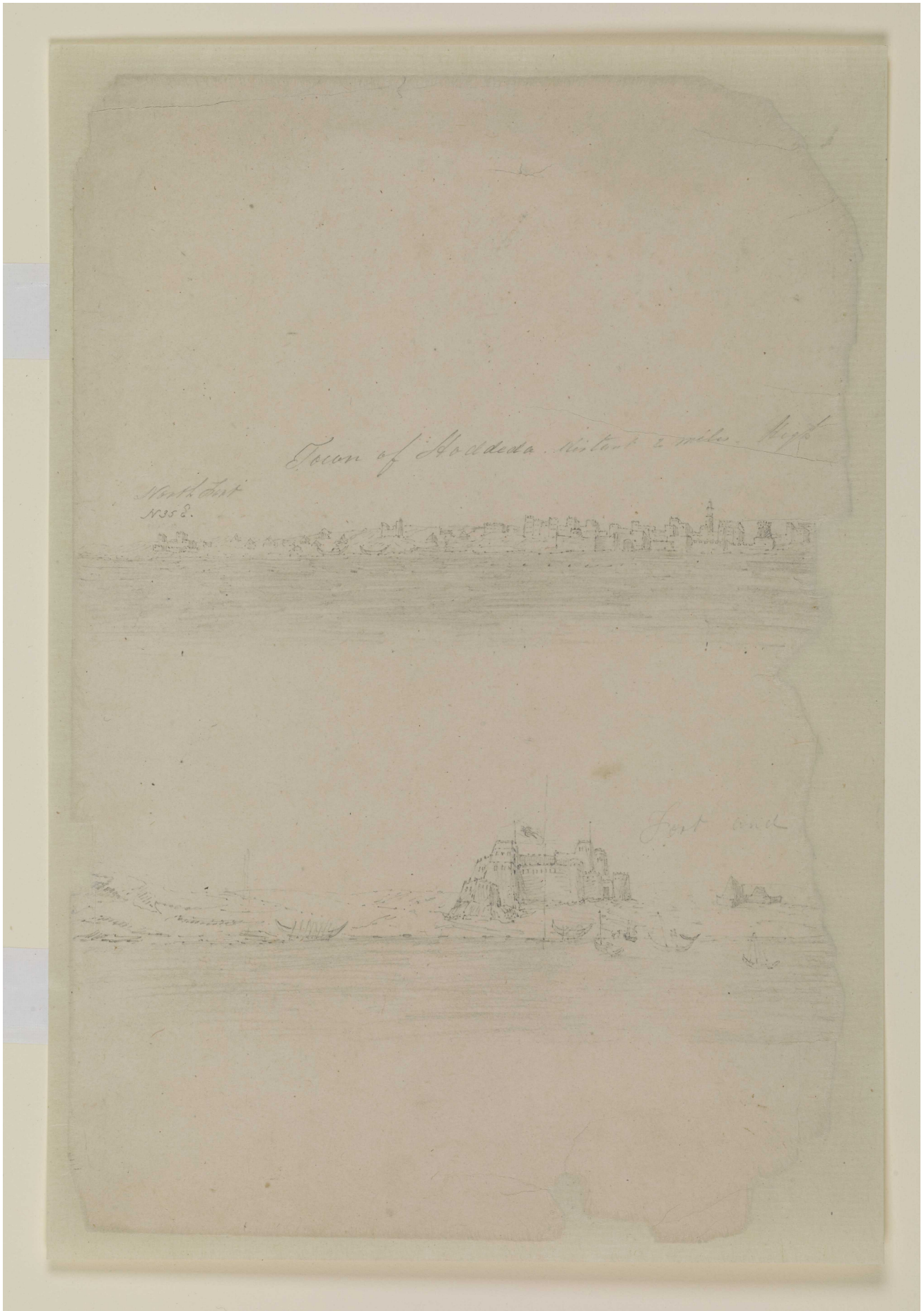
Taken from a sketch book inscribed on the first page 'Capt Elwon', these topographical views likely record the southern section of the coastline from Jeddah to Bab-el-Mandeb.

While many are incomplete or damaged, WD3535 and WD3536 are fully worked watercolour drawings.

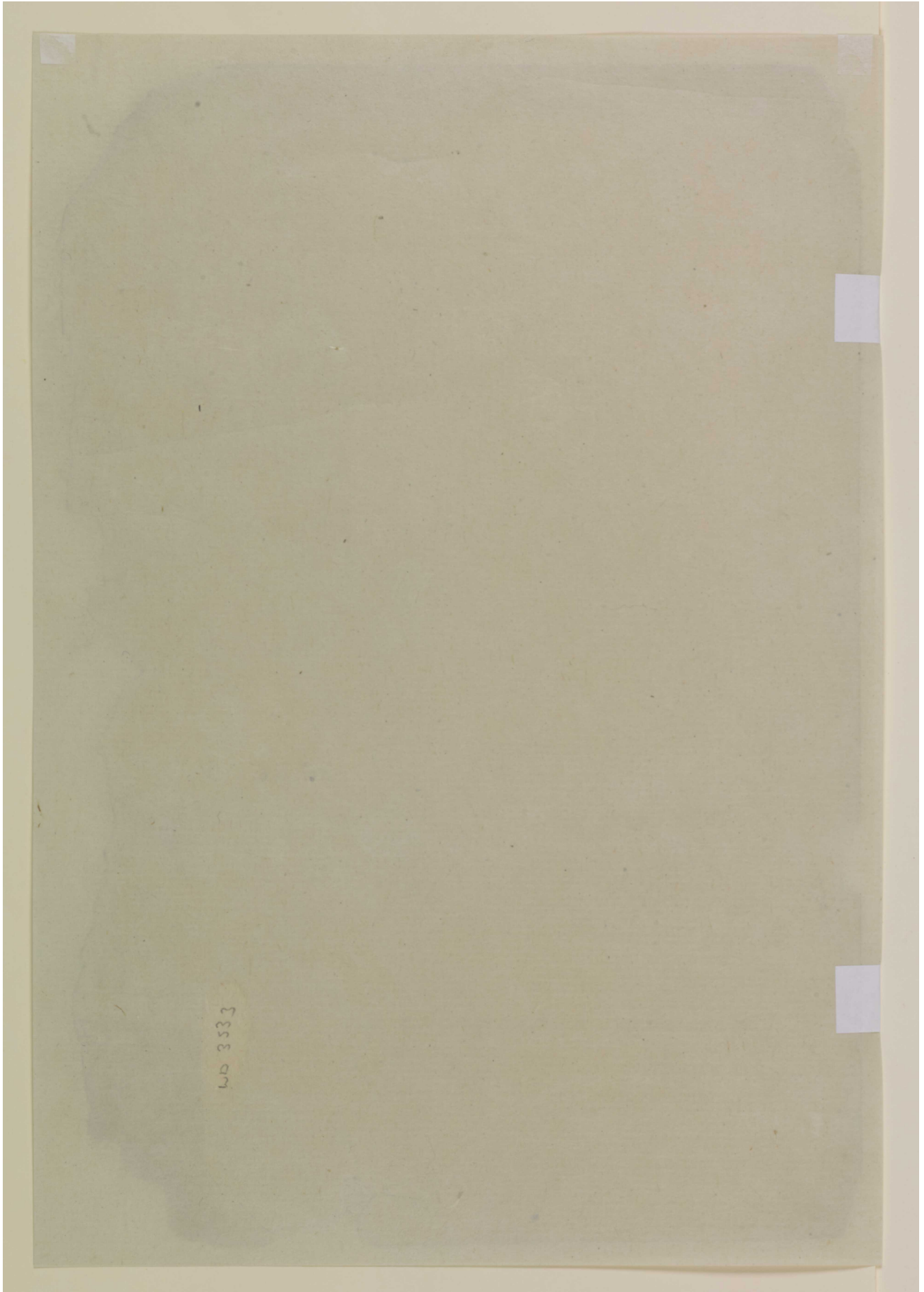
*Inscriptions:*

Inscribed in pencil and pen throughout.

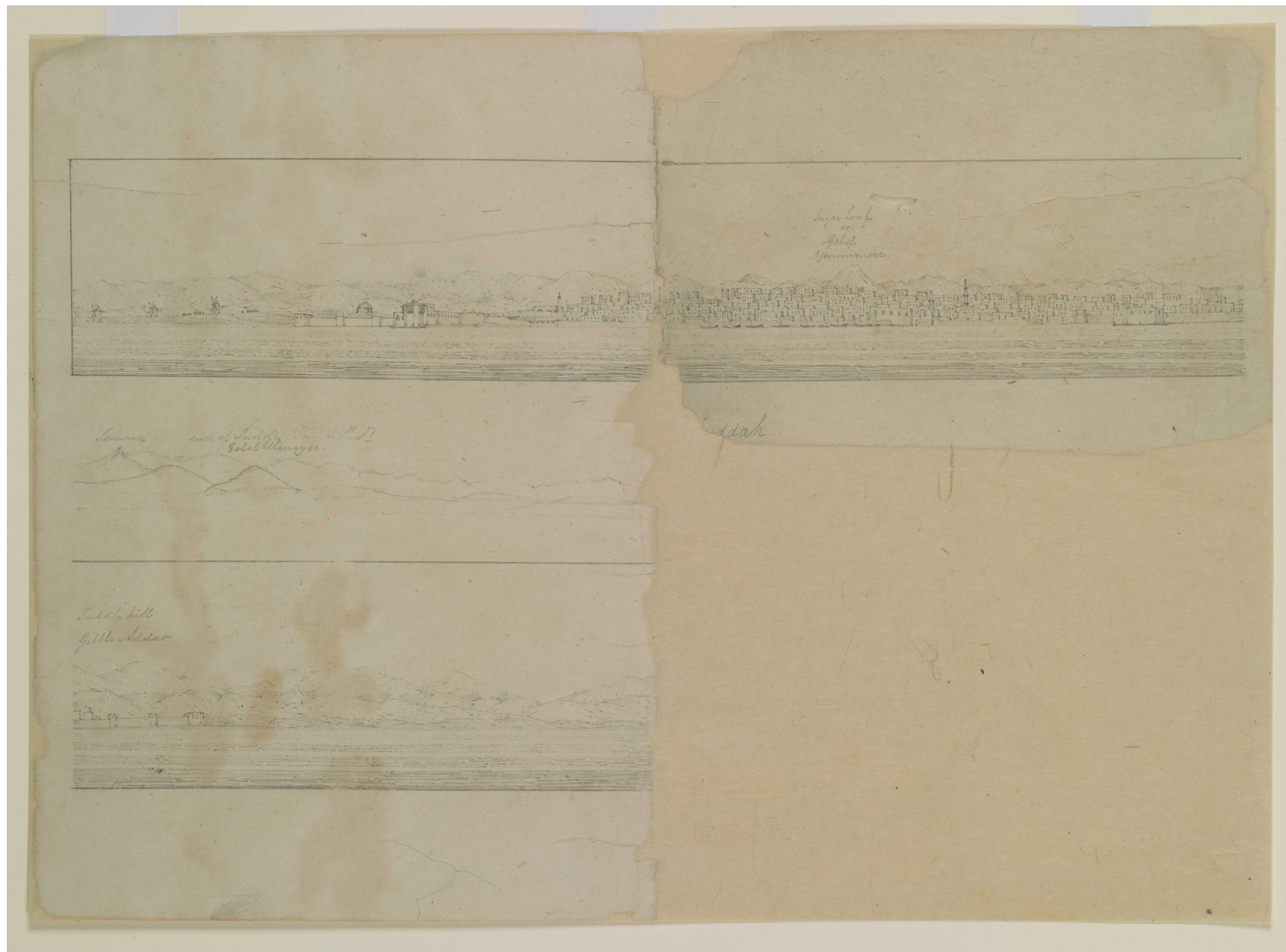
View of Hodedda [Al Hodeida] and a fort by Thomas Elwon (1793/4–1835) [1r] (1/2)



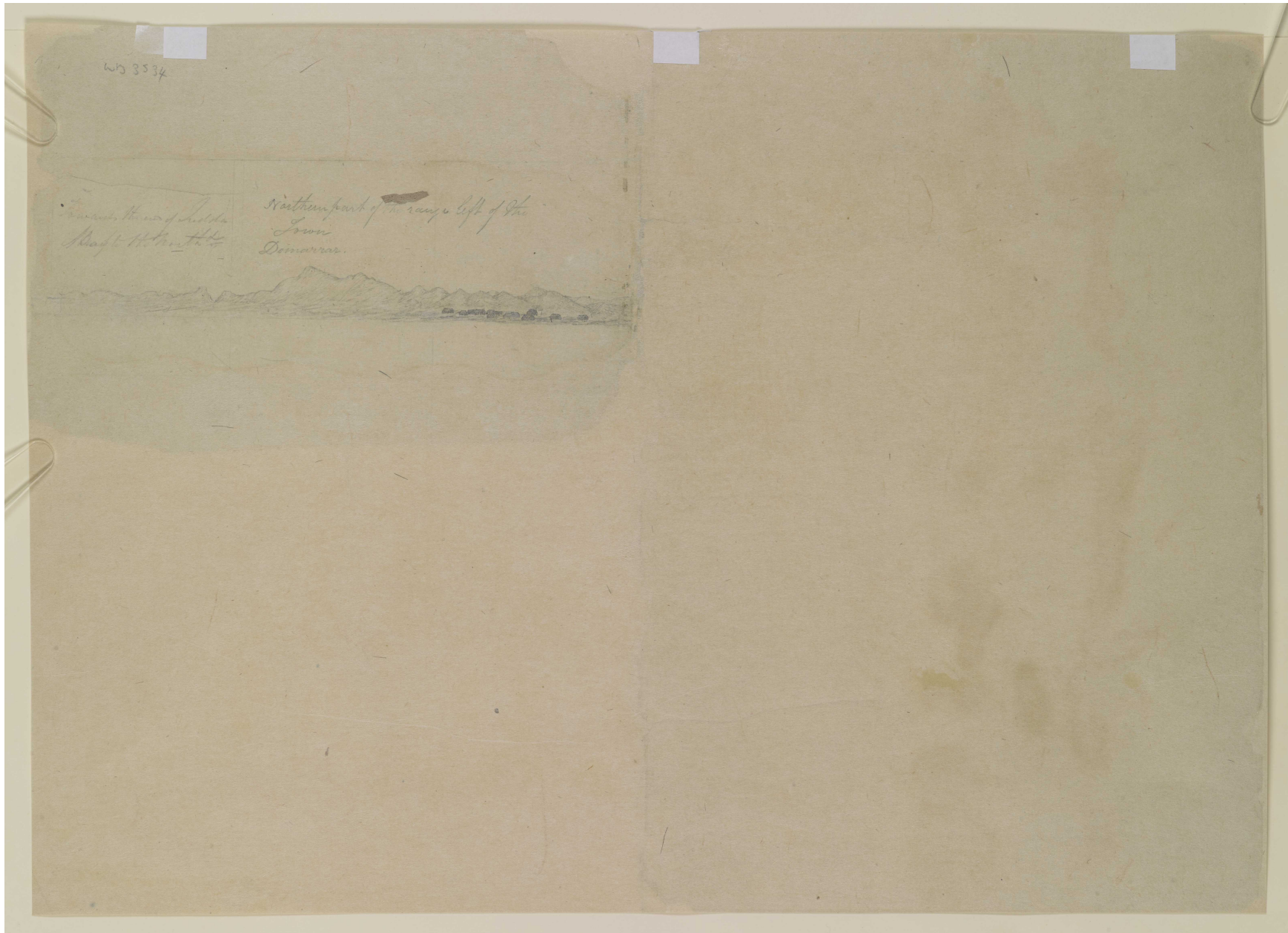
View of Hodedda [Al Hodeida] and a fort by Thomas Elwon (1793/4–1835) [1v] (2/2)



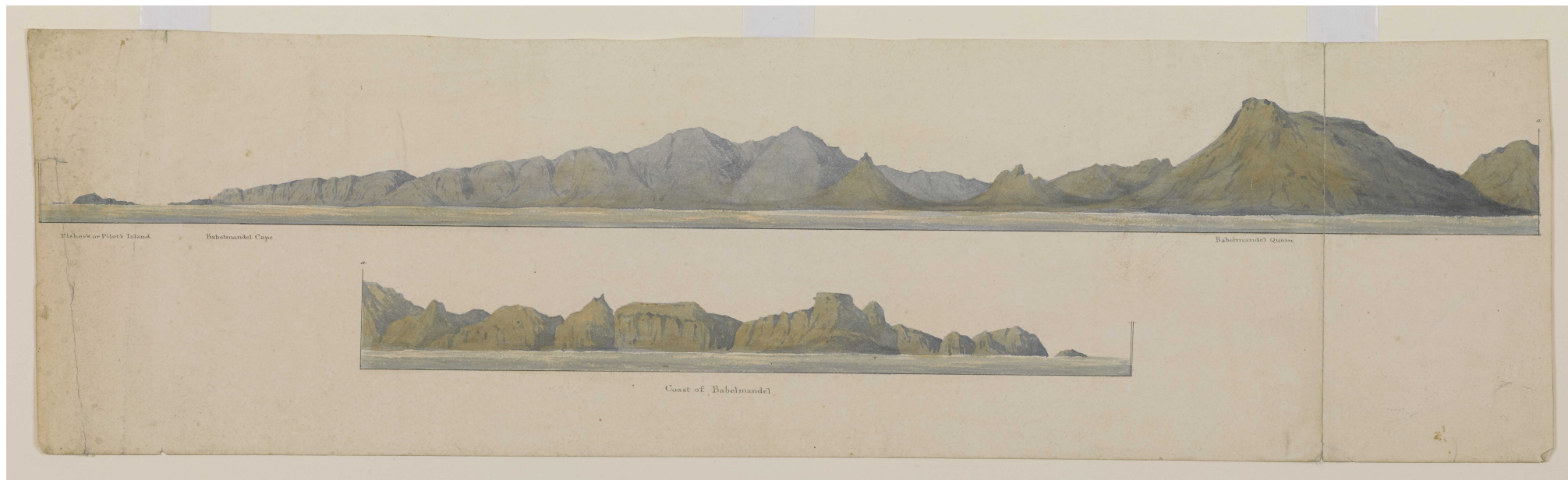
View of a coastal town by Thomas Elwon (1793/4–1835) [2r] (1/2)



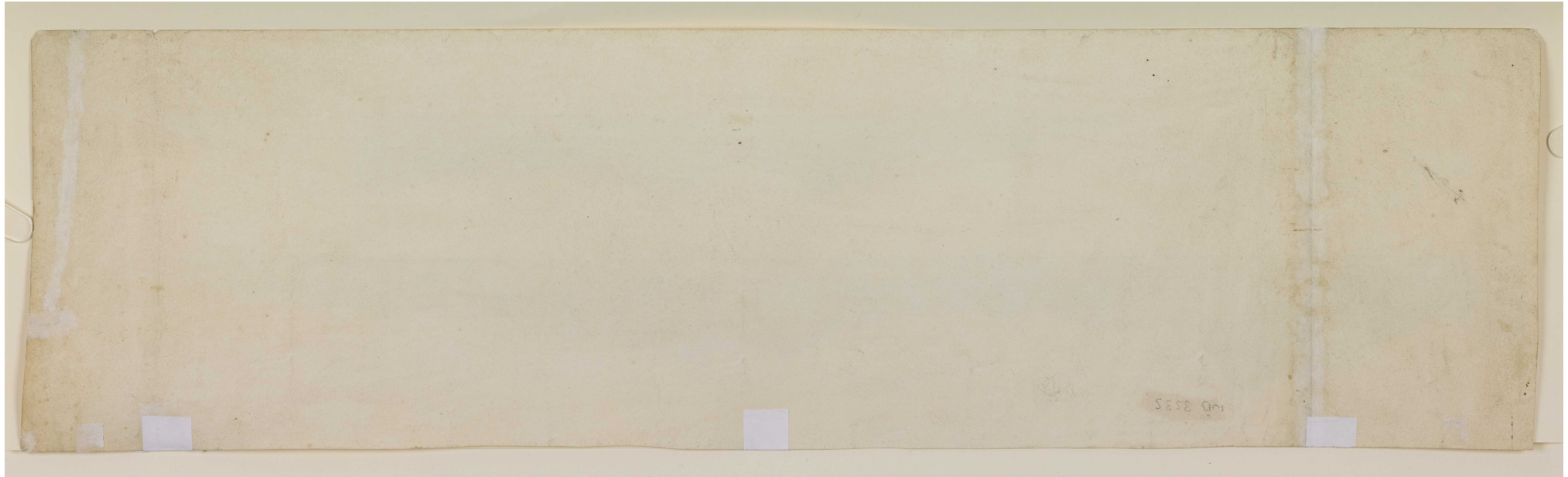
View of a coastal town by Thomas Elwon (1793/4–1835) [2v] (2/2)



Two views of the coast of Babelmandel Cape [Ras Bab-el-Mandeb] by Thomas Elwon (1793/4–1835) [3r] (1/2)



Two views of the coast of Babelmandel Cape [Ras Bab-el-Mandeb] by Thomas Elwon (1793/4–1835) [3v] (2/2)



Three views of the coastal towns of Hodeida, Loheia and El Cassar by Thomas Elwon (1793/4–1835) [4r] (1/2)

