

This PDF was generated on 19/12/2022 from online resources of
the **Qatar Digital Library**

The online record can be viewed at:

http://www.qdl.qa/en/archive/81055/vdc_100000001435.0x000348

It contains extra information, high resolution zoomable views and transcriptions.

**‘RETURN SHOWING THE ACTUAL STRENGTH OF THE ARMY AND ROYAL
AIR FORCE IN INDIA INCLUDING PERSIAN GULF PORTS, THE E. P. FORCE,
S. PERSIA AND S. E. PERSIA AND ADEN ON THE 1ST OCTOBER 1926’**

Holding Institution	British Library: India Office Records and Private Papers
Reference	IOR/L/MIL/17/5/1323
Date(s)	1 Oct 1926 (CE, Gregorian)
Written in	English in Latin
Extent and Format	1 file (27 folios)
Copyright for document	Open Government Licence



About this record

This file contains strength returns from units of the British Army, the British Indian Army, and the Royal Air Force in India, including forces deployed in Persia [Iran], the Persian Gulf ports, and Aden as of 1 October 1926. The strength returns were issued by the Adjutant-General in India. They detail the number of personnel currently serving with military branches and individual units, grouped under the following categories:

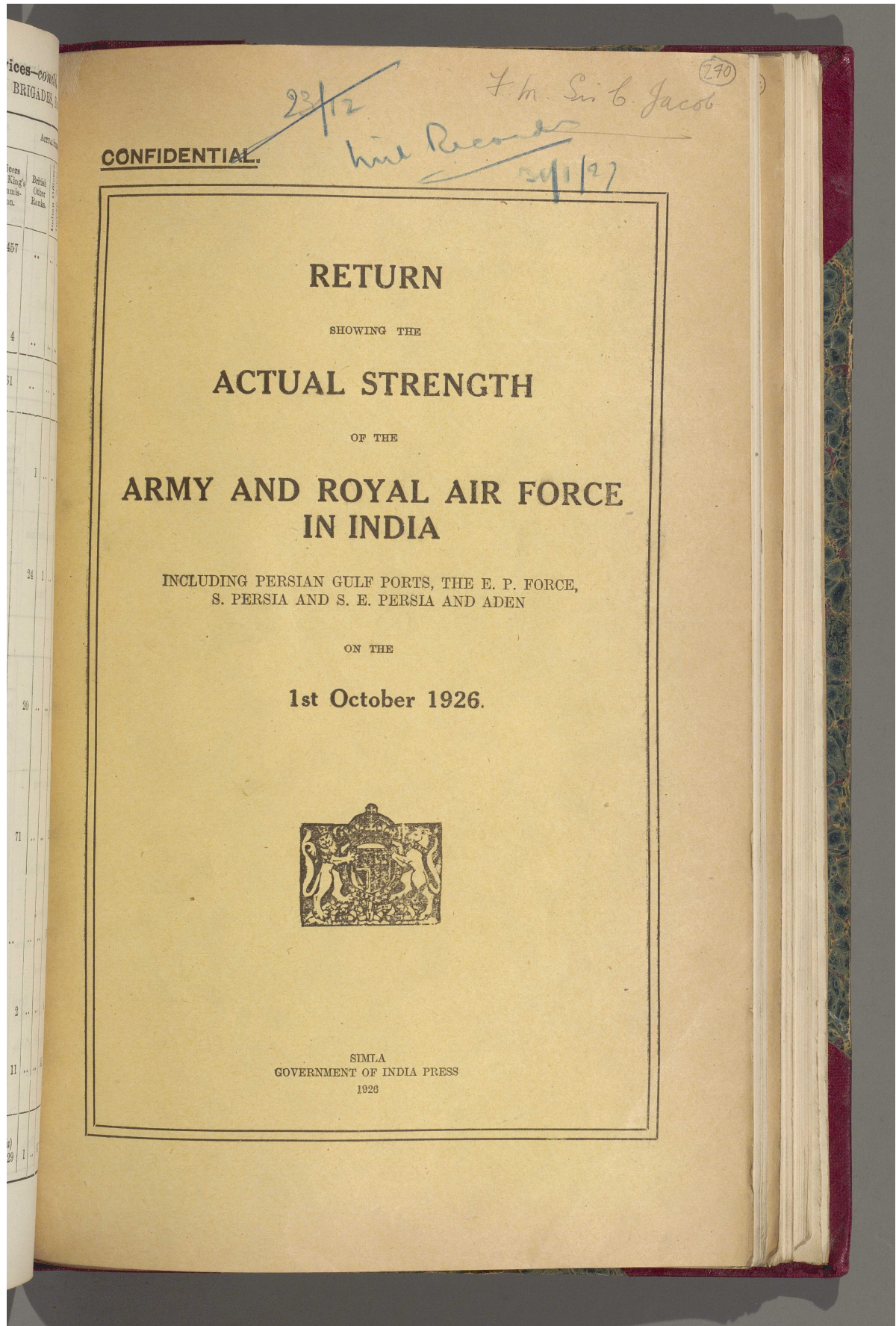
- ‘Combatant Services-Regular Forces’
- ‘Auxiliary Force-India’
- ‘Military Police and Levies’
- ‘Indian State Forces’
- ‘Miscellaneous Units’
- ‘Departmental and Administrative Services’.

Some returns are further divided into sub-categories such as: sanctioned and actual strength; officers with King's Commission, Indian officers, other ranks, and followers; 'Class A' and 'Class B' personnel; 'Active', 'Reserve', and 'Cadet' personnel; and 'Mounted' and 'Foot' personnel.

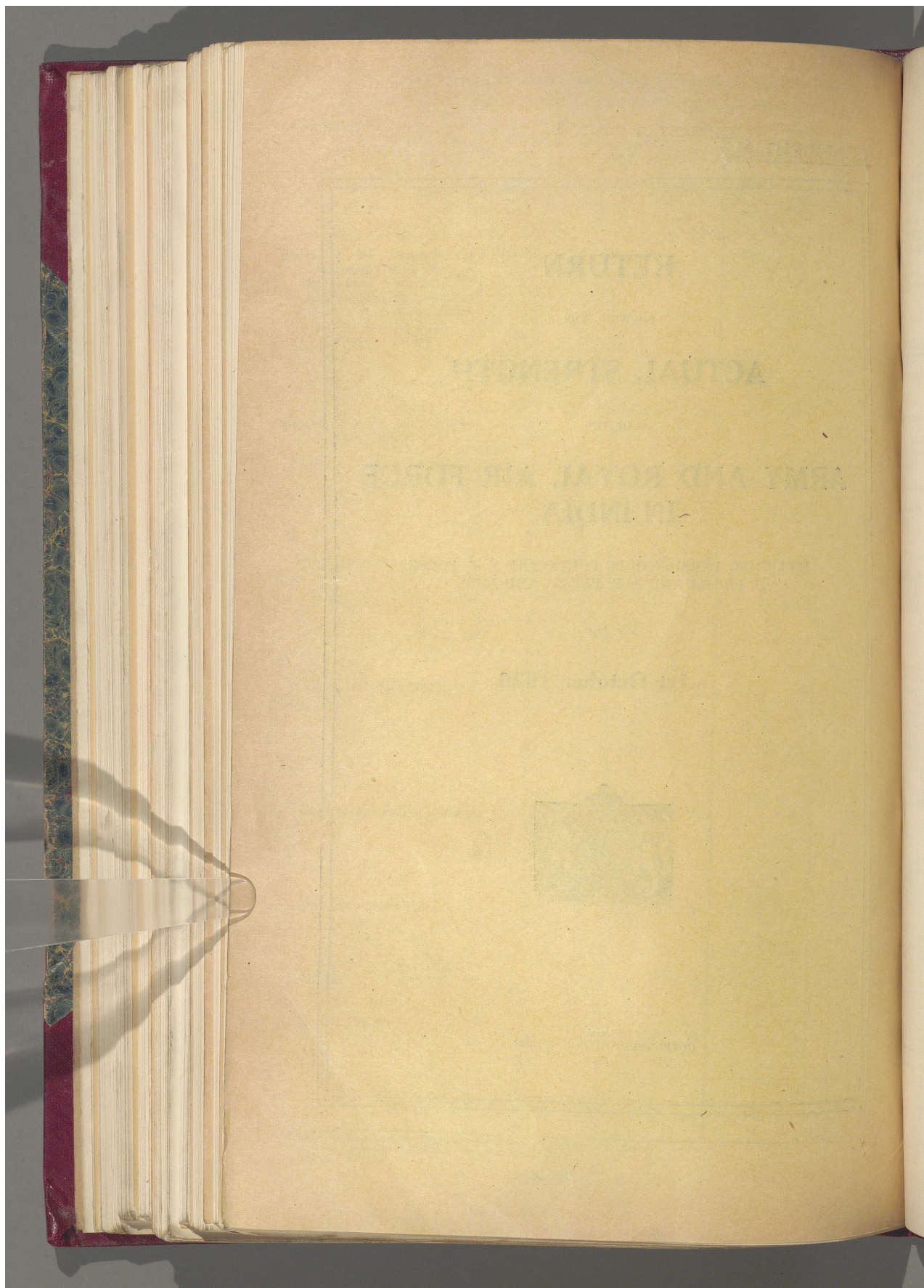
The file was printed in Simla [Shimla] and is marked 'GOVERNMENT OF INDIA PRESS 1926'.

This file is bound in a volume together with IOR/L/MIL/17/5/1314-1322 and IOR/L/MIL/17/5/1324-1325.

**'RETURN SHOWING THE ACTUAL STRENGTH OF THE ARMY AND ROYAL AIR FORCE IN INDIA
INCLUDING PERSIAN GULF PORTS, THE E. P. FORCE, S. PERSIA AND S. E. PERSIA AND
ADEN ON THE 1ST OCTOBER 1926' [270r] (1/54)**



**'RETURN SHOWING THE ACTUAL STRENGTH OF THE ARMY AND ROYAL AIR FORCE IN INDIA
INCLUDING PERSIAN GULF PORTS, THE E. P. FORCE, S. PERSIA AND S. E. PERSIA AND
ADEN ON THE 1ST OCTOBER 1926' [270v] (2/54)**



'RETURN SHOWING THE ACTUAL STRENGTH OF THE ARMY AND ROYAL AIR FORCE IN INDIA INCLUDING PERSIAN GULF PORTS, THE E. P. FORCE, S. PERSIA AND S. E. PERSIA AND ADEN ON THE 1ST OCTOBER 1926' [271r] (3/54)

(271)

SUMMARY OF STRENGTH.

COMBATANT SERVICES—REGULAR FORCES.				Page.
ROYAL AIR FORCE	1
BRITISH CAVALRY	2
ROYAL ARTILLERY	3 to 7
BRITISH INFANTRY	8 and 9
TANK CORPS	10
INDIAN CAVALRY	11
ENGINEERS	12
SIGNALS	12
INDIAN INFANTRY	13 to 18
PIONEER BATTALIONS	19
UNITS SERVING IN ADEN	20
INDIAN ARMY RESERVE	21 to 26
MECHANICAL TRANSPORT UNITS	27
ANIMAL TRANSPORT UNITS	28
AUXILIARY FORCE—INDIA.				
ARTILLERY AND ENGINEERS	29
CAVALRY	30
MACHINE GUN AND ROYAL ARMY SERVICE CORPS	31
RAILWAY CORPS	32
INFANTRY	33
INDIAN TERRITORIAL FORCE	34 and 35
MILITARY POLICE AND LEVIES	36
INDIAN STATE FORCES	37 to 39
MISCELLANEOUS UNITS	40
DEPARTMENTAL AND ADMINISTRATIVE SERVICES—				
MEDICAL SERVICES	41
SUPPLY SERVICES	42
REMOUNT SERVICES	43
CANTONMENT ESTABLISHMENT	43
VETERINARY SERVICES	44
TRAINING ESTABLISHMENTS	44
MASTER GENERAL OF SUPPLY (INDIAN ORDNANCE DEPARTMENT).	45
MILITARY FARMS AND DAIRY FARMS	45
INDIAN ARMY ORDNANCE CORPS	46
EMBARKATION AND RAILWAY TRANSPORT STAFF	47
MILITARY ENGINEER SERVICES	47
ARMY EDUCATIONAL SERVICES	47
HEADQUARTERS, COMMANDS, DISTRICTS AND BRIGADES	48

HC42FA

'RETURN SHOWING THE ACTUAL STRENGTH OF THE ARMY AND ROYAL AIR FORCE IN INDIA INCLUDING PERSIAN GULF PORTS, THE E. P. FORCE, S. PERSIA AND S. E. PERSIA AND ADEN ON THE 1ST OCTOBER 1926' [271v] (4/54)

SUMMARY OF STRENGTH

ROYAL AIR FORCE		ARMY		TOTAL	
Strength	Percentage	Strength	Percentage	Strength	Percentage
1
2
3
4
5
6
7
8
9
10
11
12
13
14
15
16
17
18
19
20
21
22
23
24
25
26
27
28
29
30
31
32
33
34
35
36
37
38
39
40
41
42
43
44
45
46
47
48
49
50
51
52
53
54
55
56
57
58
59
60
61
62
63
64
65
66
67
68
69
70
71
72
73
74
75
76
77
78
79
80
81
82
83
84
85
86
87
88
89
90
91
92
93
94
95
96
97
98
99
100

'RETURN SHOWING THE ACTUAL STRENGTH OF THE ARMY AND ROYAL AIR FORCE IN INDIA INCLUDING PERSIAN GULF PORTS, THE E. P. FORCE, S. PERSIA AND S. E. PERSIA AND ADEN ON THE 1ST OCTOBER 1926' [272r] (5/54)

(272)

SUMMARY OF STRENGTH. i

Units.	SANCTIONED ESTABLISHMENT.						ACTUAL STRENGTH.					
	Officers with King's Commn.	British Other Ranks.	Indian Officers.	Indian Other Ranks.	Civilians.	Fol-lowers.	Officers with King's Commn.	British Other Ranks.	Indian Officers.	Indian Other Ranks.	Civilians.	Fol-lowers.
ROYAL AIR FORCE.												
Combatant ..	205	1,723	..	1	77	980	190	1,727	..	1	118	938
Miscellaneous ..	7	9	1	7	9	1
Medical Service ..	11	22	1	11	22
Total ..	223	1,745	..	1	86	981	208	1,749	..	1	127	959
COMBATANT SERVICES.												
British Cavalry ..	135	2,860	..	50	..	1,275	131	2,826	..	50	..	1,290
Artillery ..	564	9,980	219	12,203	..	4,963	538	9,822	202	11,769	..	4,265
British Infantry ..	1,260	39,735	45	1,845	..	2,790	1,170	39,238	45	1,736	..	2,730
British Infantry Training Company.	1	..	2	146	..	8	3	..	3	208	..	10
Bank Corps ..	100	1,164	312	97	1,171	298
Indian Cavalry ..	(b) 294	..	399	10,381	..	4,926	204	..	381	10,314	..	4,264
Engineers—Sappers and Miners.	104	192	154	7,452	..	633	103	181	153	7,335	..	597
Signals ..	149	2,218	55	3,231	..	733	128	(a) 1,794	52	3,258	..	680
Indian Infantry ..	(c) 1,395	..	2,435	90,931	..	5,857	1,300	..	2,267	88,507	..	5,777
Pioneer Battalions ..	(d) 135	..	189	7,970	..	423	132	..	172	7,695	..	412
Total Fighting Units ..	4,137	56,149	3,498	1,34,209	..	21,320	3,986	55,032	3,275	1,30,872	..	20,323
INDIAN ARMY RESERVE	35,581	19,682
Units serving in Aden and their Training Companies.	58	1,112	30	1,161	..	204	58	1,057	30	1,147	..	229
Units returned from Aden and their Training Companies.
Indian Infantry returned from, and ear-marked for, overseas.
Training Companies of Infantry Units on Imperial charge.	4	..	12	739	..	36
Pioneer Battalion returned from overseas.
Training Companies of Pioneers on Imperial charge.	1	..	2	78	..	9
Grand Total of Fighting Units (including Aden).	4,195	57,261	3,528	1,70,951	..	21,524	4,049	56,089	3,319	1,52,518	..	20,597
Mechanical Transport ..	132	399	36	1,427	267	1,753	126	395	32	1,418	270	1,736
Animal Transport Units	91	88	184	15,192	148	2,184	89	96	182	14,959	145	2,115
Mechanical Reservists	1,468	1,162
Female Driver Reservists	3,643	1,046
AUXILIARY FORCE IN INDIA.	(e) 35,649	32,137
Permanent Staff of Auxiliary Force.	(f) 60	368	51	333
Military Police and Levies	26,165
Indian State Forces	46,570	32,770
Miscellaneous Units ..	8	77	14	392	..	196	8	63	13	389	..	201
Indian Territorial Force	(g) 734	46	..	18,340	433	41	..	15,190

(a) Excludes 204 B. O. Rs. of Cavalry, Artillery and Infantry attached to Signals but borne on the strength of their units.
 (b) Includes 28 Indian Officers.
 (c) Includes 39 Indian Officers.
 (d) Includes 1 Indian Officer.
 (e) Includes Auxiliary Force Officers.
 (f) Excludes Permanent Staff of Army Headquarters, Commands and Districts Headquarters.
 (g) Includes Permanent Staff (106).

'RETURN SHOWING THE ACTUAL STRENGTH OF THE ARMY AND ROYAL AIR FORCE IN INDIA INCLUDING PERSIAN GULF PORTS, THE E. P. FORCE, S. PERSIA AND S. E. PERSIA AND ADEN ON THE 1ST OCTOBER 1926' [272v] (6/54)

Units.	SANCTIONED ESTABLISHMENT.						ACTUAL STRENGTH.					
	Officers with King's Commn.	British Other Ranks.	Indian Officers.	Indian Other Ranks.	Civilians.	Fol-lowers.	Officers with King's Commn.	British Other Ranks.	Indian Officers.	Indian Other Ranks.	Civilians.	Fol-lowers.
DEPARTMENTAL AND ADMINISTRATIVE SERVICES.												
Medical Services ..	(a) 702	(c) 849	..	(d) 7,171	321	4,884	672	(c) 818	..	(d) 6,130	289	4,764
Supply Services ..	188	360	68	..	773	2,849	187	346	35	..	788	2,471
Remount Services ..	13	24	9	192	..	3,622	13	24	9	191	318	3,387
Cantonment Dept. ..	42	..	4	..	5	3	42	..	4	3
Veterinary Services ..	48	5	92	639	51	88	48	5	106	613	51	837
Training Establishments	97	143	10	132	46	375	97	143	10	132	46	375
Master General of Supply (Indian Ordnance Department).	26	36	..	36	949	..	31	87	..	33	906	..
Military Grass Farms ..	17	309	..	17	303	..
Dairy Farms ..	3	329	..	3	308	..
Indian Army Ordnance Corps.	(e) 115	569	6	1,643	(e) 116	571	6	1,574
Embarkation and Railway Staff.	9	29	2	16	44	39	9	30	1	16	39	35
Military Engineer Services.	206	226	918	500	202	245	835	419
Army Educational Services.	67	167	37	11	270	355	65	160	37	11	251	333
Officers of the General and Administrative Staffs of Army Headquarters, Commands, Districts and Brigades, etc.	461	461
Clerical and Menial Establishments of Army Headquarters.	(b) 778	395	..	(b) 129	1	..	646	332
Total ..	1,994	2,408	228	9,840	4,793	13,110	1,963	2,558	209	8,750	4,780	12,100
Grand Total of Army in India (including Persian Gulf Ports, Persia and Aden), excluding Royal Air Force.	7,214	96,296	3,990	267,823	5,208	38,767	6,719	91,712	3,755	254,367	5,195	36,759

(a) Includes Officers, A. D. C.
 (b) Includes Departmental Officers, Warrant Officers and British Other Ranks.
 (c) Includes Assistant Surgeons.
 (d) Includes Sub-Assistant Surgeons.
 (e) Excludes 6 officers employed at Army Headquarters.

'RETURN SHOWING THE ACTUAL STRENGTH OF THE ARMY AND ROYAL AIR FORCE IN INDIA INCLUDING PERSIAN GULF PORTS, THE E. P. FORCE, S. PERSIA AND S. E. PERSIA AND ADEN ON THE 1ST OCTOBER 1926' [273r] (7/54)

(273)

ROYAL AIR FORCE

Units.	SANCTIONED ESTABLISHMENT.					ACTUAL STRENGTH.				
	Officers with King's Commission.	British Other Ranks.	Indian officers and Indian other ranks.	Civilian Sub-ordinates (British and Indian).	Fo-lowers (including artificers).	Officers with King's Commission.	British Other Ranks.	Indian officers and Indian other ranks.	Civilian Sub-ordinates (British and Indian).	Fo-lowers (including artificers).
ROYAL AIR FORCE.										
Combatants.										
Headquarters, R. A. F.	14	26	..	27	27	14	16	..	37	27
Craft Park	9	127	..	10	123	7	153	..	14	148
Craft Depot (including wastage)	41	766	1	14	320	26	732	1	25	339
1 Indian Wing	6	14	..	3	6	6	14	..	4	3
2 " Wing	5	14	..	3	6	5	14	..	4	3
3 " Wing	4	14	..	3	6	4	13	..	4	3
5 (A. C.) Squadron	22	127	..	3	79	23	121	..	1	57
20 (A. C.) Squadron	22	127	..	3	79	26	130	..	7	60
27 (Bombing) Squadron	19	127	..	2	79	18	125	..	4	57
28 (A. C.) Squadron	22	127	..	3	79	22	126	..	7	60
31 (A. C.) Squadron	22	127	..	3	79	21	152	..	3	72
60 (Bombing) Squadron	19	127	..	2	72	18	131	..	7	84
Depot (a)	1	25	1	25
Total	205	1,723	1	77	980	190	1,727	1	118	938
MISCELLANEOUS.										
College	2	2
Geographical officers	2	2
R. E., R. A. F.	2	9	1	2	9	1
Technical Officer	1	1
Total	7	9	1	7	9	1
Medical Service.										
Headquarters, R. A. F.	2	1	2	1
Craft Depot	2	7	2	4
Craft Park	1	2	1	2
5 (A. C.) Squadron	1	2	1	2
20 " Squadron	1	2	1	3
27 (B.) Squadron	1	2	1	2
28 (A. C.) Squadron	1	2	1	2
31 " Squadron	1	2	1	3
60 (B.) Squadron	1	2	1	3
Total	11	22	11	22
GRAND TOTAL	223	1,745	1	86	981	208	1,749	1	127	939

(a) For 6 summer months only.

'RETURN SHOWING THE ACTUAL STRENGTH OF THE ARMY AND ROYAL AIR FORCE IN INDIA INCLUDING PERSIAN GULF PORTS, THE E. P. FORCE, S. PERSIA AND S. E. PERSIA AND ADEN ON THE 1ST OCTOBER 1926' [274r] (9/54)

ROYAL ARTILLERY. (274)

Officers with King's Commission.	Units.	SANCTIONED ESTABLISHMENT.					ACTUAL STRENGTH.				
		Officers with King's Commn.	British Other Ranks.	Indian Officers.	Indian Other Ranks.	Followers.	Officers with King's Commn.	British Other Ranks.	Indian Officers.	Indian Other Ranks.	Followers.
Royal Horse Artillery.											
	Brigade Headquarters										
	Battery	24	571	6	339	352	24	552	6	330	347
	"										
	"										
	" Ammunition Column ..										
	"										
	"										
131	Battery	7	189	2	112	117	7	182	2	163	114
	" Ammunition Column ..										
	TOTAL	31	760	8	451	469	31	734	8	433	461
Field Artillery.											
	Field Brigade Headquarters ..										
	Field Battery	27	656	4	224	272	21	656	4	220	182
	Field Battery (H.)										
	"										
	"										
	Field Brigade Headquarters ..										
	1st Field Battery	14	316	4	144	179	12	311	4	142	177
	49th "										
	"										
	Field Brigade Headquarters ..										
	Field Battery	27	656	4	224	272	29	658	4	211	96
	st " .. (H.)										
	th " .. (H.)										
	th "										
	Carried over	68	1,628	12	592	723	62	1,625	12	573	455

'RETURN SHOWING THE ACTUAL STRENGTH OF THE ARMY AND ROYAL AIR FORCE IN INDIA INCLUDING PERSIAN GULF PORTS, THE E. P. FORCE, S. PERSIA AND S. E. PERSIA AND ADEN ON THE 1ST OCTOBER 1926' [274v] (10/54)

ROYAL ARTILLERY—*contd.*

Units.	SANCTIONED ESTABLISHMENT.					ACTUAL STRENGTH.				
	Officers with King's Commn.	British Other Ranks.	Indian Officers.	Indian Other Ranks.	Followers.	Officers with King's Commn.	British Other Ranks.	Indian Officers.	Indian Other Ranks.	Followers.
Brought forward ..	68	1,628	12	592	723	62	1,625	12	578	723
Field Artillery—<i>contd.</i>										
16th Field Brigade Headquarters ..										
27th Field Battery (H.) ..										
34th " " ..	27	656	4	224	272	27	663	3	221	272
72nd " " ..										
86th " " (H.) ..										
21st Field Brigade Headquarters ..										
" P " Field Battery ..										
" Q " " " (H.) ..	27	656	4	224	272	25	659	4	222	272
" Y " " " ..										
" Z " " " (H.) ..										
22nd Field Brigade Headquarters ..										
32nd Field Battery ..										
33rd " " ..	27	576	4	144	227	25	578	4	142	227
36th " " (H.) ..										
55th " " (H.) ..										
23rd Field Brigade Headquarters ..										
60th Field Battery ..										
89th " " ..	30	702	6	388	351	28	661	6	378	351
90th " " (H.) ..										
100th " " (H.) ..										
23rd Field Ammunition Column ..										
24th Field Brigade Headquarters ..										
22nd Field Battery ..										
56th " " ..	27	576	4	144	227	25	581	4	140	227
56th " " (H.) ..										
70th " " ..										
26th Field Brigade Headquarters ..										
15th Field Battery ..										
40th " " (H.) ..	27	656	4	224	272	25	646	4	211	272
49th " " ..										
71st " " ..										
Carried over ..	233	5,450	38	1,940	2,344	217	5,413	37	1,888	2,344

'RETURN SHOWING THE ACTUAL STRENGTH OF THE ARMY AND ROYAL AIR FORCE IN INDIA INCLUDING PERSIAN GULF PORTS, THE E. P. FORCE, S. PERSIA AND S. E. PERSIA AND ADEN ON THE 1ST OCTOBER 1926' [275r] (11/54)

ROYAL ARTILLERY—*contd.*

5 (275)

Units.	SANCTIONED ESTABLISHMENT.					ACTUAL STRENGTH.				
	Officers with King's Commn.	British Other Ranks.	Indian Officers.	Indian Other Ranks.	Followers.	Officers with King's Commn.	British Other Ranks.	Indian Officers.	Indian Other Ranks.	Followers.
Brought forward	233	5,450	38	1,940	2,344	217	5,413	37	1,888	1,820
Field Artillery—<i>concl'd.</i>										
Field Brigade Headquarters	27	656	4	224	272	29	637	4	219	179
" Battery										
" " (H.)										
" " "										
Field Brigade Headquarters	27	576	4	144	227	27	584	4	134	227
" Battery										
" Battery (H.)										
" Battery										
" Battery										
Divisional Ammunition Column, R. A.	7	49	4	330	158	7	47	4	320	154
Divisional Ammunition Column, R. A.	7	49	4	330	158	6	51	4	327	153
TOTAL	301	6,780	54	2,968	3,159	286	6,732	53	2,888	2,533
Pack Artillery.										
0th Indian Pack Brigade	21	121	19	1,053	119	18	117	16	976	106
" Pack Battery, R. A. (H.)										
" (Murree) Pack Battery										
" (Poonch)										
" (Maymyo)										
1st Indian Pack Brigade	20	121	16	999	108	20	116	14	975	106
" Pack Battery, R. A. (H.)										
" 101st Royal (Kohat) Pack Battery (H.)										
" 106th (Jacob's)										
" 11th (Dehra Dun) Pack Battery										
Carried over	41	242	35	2,052	227	38	233	30	1,951	212

HC42FA

'RETURN SHOWING THE ACTUAL STRENGTH OF THE ARMY AND ROYAL AIR FORCE IN INDIA INCLUDING PERSIAN GULF PORTS, THE E. P. FORCE, S. PERSIA AND S. E. PERSIA AND ADEN ON THE 1ST OCTOBER 1926' [275v] (12/54)

6 ROYAL ARTILLERY—*contd.*

Units.	SANCTIONED ESTABLISHMENT.					ACTUAL STRENGTH.				
	Officers with King's Commn.	British Other Ranks.	Indian Officers.	Indian Other Ranks.	Follow-ers.	Officers with King's Commn.	British Other Ranks.	Indian Officers.	Indian Other Ranks.	Res. Amn.
Brought forward	41	242	35	2,052	227	38	233	30	1,951	
Pack Artillery—<i>contd.</i>										
22nd Indian Pack Brigade										
8th Pack Battery, R. A. (H.) ..										
102nd (Derajat) Pack Battery (F. F.) ..	21	121	19	1,053	119	20	120	15	1,094	
104th (Hazara) " " (F. F.) (H.)										
110th (Abbottabad) Pack Battery (H.) ..										
23rd Indian Pack Brigade										
17th Pack Battery, R. A. (H.) ..										
103rd (Peshawar) Pack Battery (F.F.) (H.)	21	121	20	1,070	122	21	116	18	1,030	
108th (Lahore) " " ..										
116th (Zhob) " " (H.) ..										
24th Indian Pack Brigade										
11th Pack Battery, R. A. (H.) ..										
105th (Bombay) Pack Battery (H.) ..	21	121	19	1,053	119	20	115	17	996	
117th (Nowshera) " " ..										
118th (Sohan) " " (H.) ..										
25th Indian Pack Brigade										
6th Pack Battery, R. A. (H.) ..										
107th (Bengal) Pack Battery (H.) ..	21	121	19	1,053	119	20	121	16	1,013	
113th (Dardoni) " " (H.) ..										
115th (Jhelum) " " ..										
Chitral Pack Section	2	..	2	126	12	2	..	2	126	
114th (Rajputana) Pack Battery ..	4	1	4	252	25	4	1	4	246	
TOTAL PACK ARTILLERY	131	727	118	6,659	743	125	706	102	6,356	683

'RETURN SHOWING THE ACTUAL STRENGTH OF THE ARMY AND ROYAL AIR FORCE IN INDIA INCLUDING PERSIAN GULF PORTS, THE E. P. FORCE, S. PERSIA AND S. E. PERSIA AND ADEN ON THE 1ST OCTOBER 1926' [276r] (13/54)

ROYAL ARTILLERY—*concl'd.* (276)

Units.	SANCTIONED ESTABLISHMENT.					ACTUAL STRENGTH.				
	Officers with King's Commn.	British Other Ranks.	Indian Officers.	Indian Other Ranks.	Followers.	Officers with King's Commn.	British Other Ranks.	Indian Officers.	Indian Other Ranks.	Followers.
Medium Artillery.										
Medium Brigade	27	583	5	304	128	25	579	5	288	129
" "	27	583	5	304	128	26	559	5	296	131
Medium Battery	6	135	..	35	12	8	134	..	23	12
Total Medium Artillery	(c) 60	(c) 1,301	(c) 10	(c) 643	(c) 268	59	1,272	10	607	272
Heavy Artillery.										
Quarters & D. E. Heavy Artillery	4	*25	2	76	5	2	9	2	68	4
Heavy Battery	5	99	1	65	7	4	99	1	60	7
" "	5	99	1	65	7	4	100	1	65	7
" "	5	99	1	65	7	5	98	1	49	7
Total	(d) 19	(d) 322	(d) 5	(d) 271	(d) 26	15	306	5	242	25
Armaments	20	152	..	20	150
Depots and Training Centres.										
A. Training Centre, Muttra	11	(a) 10	12	(a) 501	(a) 79	11	9	13	487	77
A. Training Centre, Lucknow	11	9	12	710	65	11	9	11	756	62
A. Boys Depot	51	2	..	34	2
TOTAL	22	70	24	1,211	146	22	52	24	1,243	141
Totals, Artillery.										
E. A.	31	760	8	451	469	31	734	8	433	461
A. and Divnl. Ammn. Cols.	301	6,780	54	2,968	3,159	286	6,732	53	2,888	2,533
Work Units	131	727	118	6,659	743	125	706	102	6,356	683
Medium Units	60	1,301	10	643	268	59	1,272	10	607	272
Heavy and Fort Armaments	19	342	5	271	178	15	326	5	242	175
Depots and Training Centres	22	70	24	1,211	146	22	52	24	1,243	141
GRAND TOTAL, ROYAL ARTILLERY	(b) 564	(b) 9,980	(b) 219	(b) 12,203	(b) 4,963	538	9,822	202	11,769	4,265

(a) Revised Peace Establishments, vide A. I. (I.) No. 574 of 1924.
(b) Peace Establishments, vide A. I. (I.) Nos. 154 and 897 of 1925 and B. 200 of 1926.
(c) Revised Peace Establishments, vide A. I. (I.) No. 863 of 1925.
(d) Peace Establishment, vide A. I. (I.) No. 1123 of 1925.
(*) Includes 9 Armament Artificers attached.

'RETURN SHOWING THE ACTUAL STRENGTH OF THE ARMY AND ROYAL AIR FORCE IN INDIA INCLUDING PERSIAN GULF PORTS, THE E. P. FORCE, S. PERSIA AND S. E. PERSIA AND ADEN ON THE 1ST OCTOBER 1926' [276v] (14/54)

8

BRITISH INFANTRY.

Units.	SANCTIONED ESTABLISHMENT.					ACTUAL STRENGTH.				
	Officers with King's Commn.	British Other Ranks.	Indian Officers.	Indian Other Ranks.	Followers.	Officers with King's Commn.	British Other Ranks.	Indian Officers.	Indian Other Ranks.	Followers.
2nd Bn., The Queen's Royal Regiment.						29	853	1	39	
2nd Bn., The K. O. Royal Regiment (Lancasters).						26	888	1	39	
2nd Bn., The Northumberland Fusiliers.						26	885	1	37	
2nd Bn., The Royal Warwickshire Regiment.						25	881	1	39	
1st Bn., The Royal Fusiliers ..						25	799	1	40	
2nd Bn., The Lincolnshire Regiment.						25	878	1	37	
2nd Bn., The West Yorkshire Regiment.						28	850	1	38	
2nd Bn., The Lancashire Fusiliers						27	837	1	39	
2nd Bn., The Royal Scots Fusiliers	28	883	1	41	62	28	891	1	39	
1st Bn., The Cheshire Regiment ..		for each Battalion.				22	869	1	38	
1st Bn., The Royal Welch Fusiliers	1,260	Total 39,735	for 45 45	Battalions 1,845	2,790	24	884	1	39	
2nd Bn., The South Wales Borderers						25	875	1	42	
2nd Bn., The Cameronians ..						20	903	1	40	
2nd Bn., The Gloucestershire Regiment.						26	882	1	39	
1st Bn., The Worcestershire Regiment.						27	898	1	38	
1st Bn., The East Lancashire Regiment.						27	896	1	39	
1st Bn., The D. C. Light Infantry ..						24	882	1	37	
2nd Bn., The Royal Sussex Regiment.						26	874	1	36	
1st Bn., The Hampshire Regiment						30	864	1	39	
1st Bn., The South Staffordshire Regiment.						23	886	1	40	
2nd Bn., The Prince of Wales' Volunteers.						23	880	1	39	
Carried over ..	(a) 1,260	(a) 39,735	(a) 45	(a) 1,845	(a) 2,790	536	18,355	21	813	1,279

(a) Peace Establishments, vide A. I. (I.) No. 471 of 1925.

'RETURN SHOWING THE ACTUAL STRENGTH OF THE ARMY AND ROYAL AIR FORCE IN INDIA INCLUDING PERSIAN GULF PORTS, THE E. P. FORCE, S. PERSIA AND S. E. PERSIA AND ADEN ON THE 1ST OCTOBER 1926' [277r] (15/54)

BRITISH INFANTRY—concl'd. 9 ⁽²⁷⁷⁾

Units.	SANCTIONED ESTABLISHMENT.					ACTUAL STRENGTH.				
	Officers with King's Commn.	British Other Ranks.	Indian Officers.	Indian Other Ranks.	Followers.	Officers with King's Commn.	British Other Ranks.	Indian Officers.	Indian Other Ranks.	Followers.
Brought forward ..	1,260	39,735	45	1,845	3,285	536	18,355	21	813	1,279
29 883 1 Bn., The Welch Regiment ..						25	875	1	40	57
26 888 1 Bn., The Black Watch (Royal Highlanders).						29	846	1	40	62
26 888 1 Bn., The Ox. and Bucks Light Infantry.						25	895	1	39	60
15 881 1 Bn., The Essex Regiment ..						26	871	1	38	97
1 Bn., The Sherwood Foresters						28	870	1	38	62
1 Bn., The Loyal Regiment ..						27	897	1	36	47
5 749 1 Bn., The Northamptonshire Regiment.						25	873	1	39	55
5 878 1 Bn., The Royal Berkshire Regiment.						28	888	1	38	56
1 Bn., The Queen's Own Royal West Kent Regiment.						29	872	1	39	62
887 1 Bn., The K. O. Yorkshire Light Infantry.	28	888	1	41	62	27	867	1	39	62
891 1 Bn., The King's Shropshire Light Infantry.			for each Battalion.			24	873	1	39	60
899 1 Bn., The Middlesex Regiment						27	871	1	39	55
884 1 Bn., The King's Royal Rifle Corps.						29	864	1	39	62
875 1 Bn., The Wiltshire Regiment						24	878	1	39	55
882 1 Bn., The Manchester Regiment						27	875	1	39	58
888 1 Bn., The North Staffordshire Regiment.						27	874	1	38	57
888 1 Bn., The York and Lancaster Regiment.						24	878	1	38	58
886 1 Bn., The Durham Light Infantry.						28	879	1	38	62
883 1 Bn., The Highland Light Infantry.						25	864	1	40	62
874 1 Bn., The Seaforth Highlanders.						30	869	1	36	62
874 1 Bn., The Gordon Highlanders.						27	869	1	38	57
864 1 Bn., The Q. O. Cameron Highlanders.						26	825	1	35	59
880 1 Bn., The Royal Ulster Rifles.						24	871	1	39	62
880 1 Bn., The Rifle Brigade (Prince Consort's Own).						23	839	1	40	62
880 TOTAL BRITISH INFANTRY ..	1,260	39,735	45	1,845	2,790	1,170	39,238	45	1,736	2,730
880 British Infantry Training Company	1	..	2	146	8	3	..	3	208	10

HC42FA

'RETURN SHOWING THE ACTUAL STRENGTH OF THE ARMY AND ROYAL AIR FORCE IN INDIA INCLUDING PERSIAN GULF PORTS, THE E. P. FORCE, S. PERSIA AND S. E. PERSIA AND ADEN ON THE 1ST OCTOBER 1926' [277v] (16/54)

Units.	SANCTIONED ESTABLISHMENT.					ACTUAL STRENGTH.				
	Officers with King's Commn.	British Other Ranks.	Indian Officers.	Indian Other Ranks.	Followers.	Officers with King's Commn.	British Other Ranks.	Indian Officers.	Indian Other Ranks.	Followers.
TANK CORPS.										
Armoured Car Companies.										
1st Armoured Car Company ..						11	145	
2nd " " " " ..	12	145	39	12	149	
6th " " " " ..	for each Company					12	149	
7th " " " " ..	Total for 8 Companies					11	148	
8th " " " " ..						11	139	
9th " " " " ..	96	1,160	312	12	149	
10th " " " " ..						12	148	
11th " " " " ..						12	140	
Group Headquarters ..	4	4	4	4	
TOTAL ..	(a) 100	(a) 1,164	312	97	1,171	

(a) Peace Establishments, vide A. I. (L) B.-10 of 1926.

'RETURN SHOWING THE ACTUAL STRENGTH OF THE ARMY AND ROYAL AIR FORCE IN INDIA INCLUDING PERSIAN GULF PORTS, THE E. P. FORCE, S. PERSIA AND S. E. PERSIA AND ADEN ON THE 1ST OCTOBER 1926' [278r] (17/54)

INDIAN CAVALRY. 778

		SANCTIONED ESTABLISHMENT.				ACTUAL STRENGTH.			
Units.		Officers with King's Commn.	Indian Officers.	Indian Other Ranks.	Fol-lowers.	Officers with King's Commn.	Indian Officers.	Indian Other Ranks.	Fol-lowers.
Regiments, 21.									
11	145					15	15	483	205
12	149					16	19	493	205
12	149					14	18	484	205
11	149					13	19	496	206
11	139					13	18	490	206
12	149					17	19	493	206
12	148					13	17	482	206
12	140					12	19	489	206
4	4					15	18	491	206
		294	399	10,353	4,326	13	19	496	214
		for 21 Cavalry Regiments at per Regiment.							
7	1,071	14	19	493	206	14	19	492	206
						14	17	494	206
						10	19	488	204
						13	15	496	146
						14	18	493	205
						16	18	492	205
						14	19	490	202
						14	19	490	206
						14	19	493	206
						16	19	486	206
						14	18	493	206
TOTAL INDIAN CAVALRY REGIMENTS IN INDIA		(a) 294	(a) 399	*(a) 10,381	(a) 4,326	294	381	10,314	4,264

(a) Peace Establishments, vide A. I. (L) No. 973 of 1925.
* Includes 23 Sowars for the Recruit and Reservist Section.

'RETURN SHOWING THE ACTUAL STRENGTH OF THE ARMY AND ROYAL AIR FORCE IN INDIA INCLUDING PERSIAN GULF PORTS, THE E. P. FORCE, S. PERSIA AND S. E. PERSIA AND ADEN ON THE 1ST OCTOBER 1926' [278v] (18/54)

Units.	SANCTIONED ESTABLISHMENT.					ACTUAL STRENGTH.				
	Officers with King's Commn.	British Other Ranks.	Indian Officers.	Indian Other Ranks.	Fol-lowers.	Officers with King's Commn.	British Other Ranks.	Indian Officers.	Indian Other Ranks.	Fol-lowers.
Sappers and Miners.										
King George's Own Bengal Sappers and Miners ..	} 100	170	153	7,417	595	38	59	52	2,659	213
Queen Victoria's Own Madras Sappers and Miners						30	49	47	2,041	183
Royal Bombay Sappers and Miners ..						27	45	47	2,272	149
Burma " " " " ..						4	6	6	297	21
TOTAL SAPPERS AND MINERS ..	(a)100	(a)170	(a)153	7,417	(a)595	99	159	152	7,299	366
Defence Light Section										
Karachi Defence Light Section ..	} 4	22	1	35	38	1	7	..	18	1
Calcutta " " " " ..						1	6	14
Rangoon " " " " ..						1	4	1	18	7
Bombay " " " " ..						1	5	10
Total ..	4	22	1	35	38	4	22	1	36	38
TOTAL ENGINEERS ..	104	192	154	7,452	633	103	181	153	7,335	567
Signal Units.										
No. A Divisional Signals ..	} 149	2,218	55	3,231	733	10	145	5	287	68
No. B " " " " ..						12	195	5	314	68
No. C " " " " ..						11	150	5	277	10
No. D " " " " ..						11	170	5	304	67
No. E " " " " ..						11	88	4	155	49
No. F " " " " ..						11	130	6	277	51
No. G " " " " ..						9	124	4	165	47
No. 1 (Line) Company " A " Corps Signals ..						6	97	2	121	35
No. 1 (Line) Company " B " Corps Signals ..						6	95	2	129	42
No. 2 (Wireless) Company " A " Corps Signals ..						7	145	1	109	40
No. 2 (Wireless) Company " B " Corps Signals ..						7	227	1	143	72
Signal Training Centre, India ..						21	297	12	859	19
" A " Cavalry Brigade Signal Troop ..						1	24	..	32	21
" B " " " " " " " " ..						3	46	..	46	30
" C " " " " " " " " ..	2	24	..	32	21					
" D " " " " " " " "	3	..	8	..					
" T " Company					
TOTAL SIGNAL UNITS ..	149	2,218	55	3,231	733	128	1,998*	52	3,253	680

* Includes 204 men of Cavalry, Artillery and Infantry attached to Signals but borne on the strength of their units.
(a) Peace Establishment, vide A. I. (I.) No. 274 of 1925.

'RETURN SHOWING THE ACTUAL STRENGTH OF THE ARMY AND ROYAL AIR FORCE IN INDIA INCLUDING PERSIAN GULF PORTS, THE E. P. FORCE, S. PERSIA AND S. E. PERSIA AND ADEN ON THE 1ST OCTOBER 1926' [279r] (19/54)

INDIAN INFANTRY. 13

Units.	SANCTIONED ESTABLISHMENT.				ACTUAL STRENGTH.			
	Officers with King's Commn.	Indian Officers.	Indian Other Ranks.	Fol-lowers.	Officers with King's Commn.	Indian Officers.	Indian Other Ranks.	Fol-lowers.
Indian Infantry.								
1st Battalion, 1st Punjab Regiment ..	5				12	19	716	50.
2nd " " " " ..	12	21	742	50	11	21	747	48.
3rd " " " " ..					12	22	777	49.
4th " " " " ..					12	19	725	50
5th " " " " ..	1		(Training)		12	18	682	50.
10th " " " " ..	10	17	796	43	10	17	747	43
Total ..	70	122	4,506	293	69	116	4,394	290.
1st Battalion, 2nd Punjab Regiment ..					12	20	707	48.
2nd " " " " ..	4		Battalions		12	20	685	48
3rd " " " " ..	12	21	742	50	13	20	762	51
4th " " " " ..					11	20	719	50
10th " " " " (a) ..	9	15	646	35	9	15	640	35
Total ..	57	99	3,614	235	57	95	3,513	232
1st Battalion, 3rd Madras Regiment ..	1		Battalion		14	19	742	50.
2nd " " " " ..	12	21	742	50				
Training Company 1st Battn., 3rd Madras Regiment.	1	2	150	8	1	2	144	7
Total ..	13	23	892	58	15	21	886	57
1st Battalion, 4th Bombay Grenadiers ..	4		Battalions		13	18	682	50
2nd " " " " ..	12	21	742	50	10	19	685	47
3rd " " " " ..					12	21	693	47
4th " " " " ..	1		Battalion (Training)		10	19	694	47
10th " " " " ..	9	15	646	35	9	15	731	42
Total ..	57	99	3,614	235	54	92	3,485	233
1st Battalion, 5th Mahratta Light Infantry ..					11	21	721	48
2nd " " " " ..	5		Battalions		12	20	708	47
3rd " " " " ..	12	21	742	50	11	20	746	50
4th " " " " ..	1		Battalion (Training)		12	18	743	49
5th Royal Battalion, 5th Mahratta Light Infantry.	10	17	796	43	13	20	692	48
10th Battalion, 5th Mahratta Light Infantry					10	18	906	45
Total ..	70	122	4,506	293	69	117	4,516	287
Carried over ..	267	465	17,132	1,114	264	441	16,794	1,099

HC42PA (a) Excludes strength of Training Companies of units on Imperial charge.

'RETURN SHOWING THE ACTUAL STRENGTH OF THE ARMY AND ROYAL AIR FORCE IN INDIA INCLUDING PERSIAN GULF PORTS, THE E. P. FORCE, S. PERSIA AND S. E. PERSIA AND ADEN ON THE 1ST OCTOBER 1926' [279v] (20/54)

Units.	SANCTIONED ESTABLISHMENT.				ACTUAL STRENGTH.			
	Officers with King's Commn.	Indian Officers.	Indian Other Ranks.	Fol-lowers.	Officers with King's Commn.	Indian Officers.	Indian Other Ranks.	Fol-lowers.
Brought forward ..	267	465	17,132	1,114	264	441	16,794	1,090
Indian Infantry—<i>contd.</i>								
1st Battalion, 6th Rajputana Rifles (Wellesley's).					11	19	718	49
2nd Battalion, 6th Rajputana Rifles (Prince of Wales's Own).	5	Battalions at			9	19	732	49
3rd Battalion, 6th Rajputana Rifles ..	12	21	742	50	11	19	682	50
4th " " " " (Outram's)	1	Battalion (Training) at			11	19	679	51
5th " " " " (Napier's)	10	17	796	43	14	20	730	50
10th " " " " (Shekhwati).					10	16	706	46
Total ..	70	122	4,506	293	66	112	4,337	255
1st Battalion, 7th Rajput Regiment (Queen Victoria's Own Light Infantry).	4	Battalions at			13	22	736	49
2nd Battalion, 7th Rajput Regiment (Prince Albert Victor's).	12	21	742	50	12	19	741	50
3rd Battalion, 7th Rajput Regiment (Duko of Connaught's Own).	1	Battalion (1-7th) at			14	22	741	50
4th Battalion, 7th Rajput Regiment ..	12	22	741	50				
5th " " " " (Training)	1	Battalion (Training) at			12	18	744	49
10th Battalion, 7th Rajput Regiment (The Lucknow Regiment).	10	17	796	43	11	16	714	50
Total ..	70	123	4,505	293	72	114	4,443	291
1st. Battalion, 8th Punjab Regiment ..					12	19	735	49
2nd " " " " ..	5	Battalions at			12	21	731	50
3rd " " " " ..	12	21	742	50	13	21	756	50
4th " " " " (Prince of Wales's Own).	1	Battalion (Training) at			12	20	715	49
5th Battalion, 8th Punjab Regiment (Burma)	10	17	796	43	13	21	721	50
10th " " " " ..					10	17	772	49
Total ..	70	122	4,506	293	72	119	4,430	290
1st Royal Battalion, 9th Jat Regiment (Light Infantry).					11	21	721	50
2nd Battalion, 9th Jat Regiment (Mooltan Battalion).	3	Battalions at			13	21	727	47
	12	21	742	50				
3rd Battalion, 9th Jat Regiment ..	1	Battalion (Training) at			12	18	736	50
	8	13	496	27				
10th Battalion, 9th Jat Regiment ..					8	13	489	50
Total ..	44	76	2,722	177	44	73	2,673	177
Carried over ..	521	908	33,371	2,170	518	859	32,677	2,132

'RETURN SHOWING THE ACTUAL STRENGTH OF THE ARMY AND ROYAL AIR FORCE IN INDIA INCLUDING PERSIAN GULF PORTS, THE E. P. FORCE, S. PERSIA AND S. E. PERSIA AND ADEN ON THE 1ST OCTOBER 1926' [280r] (21/54)

INDIAN INFANTRY—*contd.* 151

Units.	SANCTIONED ESTABLISHMENT.				ACTUAL STRENGTH.			
	Officers with King's Commn.	Indian Officers.	Indian Other Ranks.	Fol-lowers.	Officers with King's Commn.	Indian Officers.	Indian Other Ranks.	Fol-lowers.
Brought forward ..	521	908	33,371	2,170	518	859	32,677	2,152
Indian Infantry—<i>contd.</i>								
Battalion, 10th Baluch Regiment (Duchess of Connaught's Own).					12	18	700	50
Battalion, 10th Baluch Regiment ..					12	18	684	48
Battalion, 10th Baluch Regiment (Queen Mary's Own).	5	Battalions at			12	17	689	46
Battalion, 10th Baluch Regiment (Duke of Connaught's Own).	12	21	742	50	13	20	719	50
Battalion, 10th Baluch Regiment (King George's Own) (Jacob's Rifles).	1	Battalion (Training) at			13	19	733	48
Battalion, 10th Baluch Regiment ..	10	17	796	43	10	17	762	43
Total ..	70	122	4,506	293	72	109	4,287	285
Battalion, 11th Sikh Regiment ..					10	19	602	50
Battalion, 11th Sikh Regiment ..					14	20	609	49
Battalion, 11th Sikh Regiment (Rattray's Sikhs).	4	Battalions at			12	21	686	49
" " " " (Duke of Connaught's Own).	12	21	742	50	11	18	704	48
Battalion, 11th Sikh Regiment ..	1	Battalion (Training) at			9	17	951	33
Battalion, 11th Sikh Regiment ..	9	15	646	35				
Total ..	57	99	3,614	235	56	95	3,552	229
Battalion, 12th Frontier Force Regiment (Prince of Wales's Own) (Sikhs).					11	21	737	49
Battalion, 12th Frontier Force Regiment (Sikhs).	5	Battalions at			13	19	743	50
Battalion, 12th Frontier Force Regiment (Sikhs).	12	21	742	50	13	19	710	49
Battalion, 12th Frontier Force Regiment (Sikhs).	1	Battalion (Training) at			11	21	738	50
Battalion, 12th " " " " (Queen Victoria's Own Corps of Guides).	10	17	796	43	12	19	672	50
Battalion, 12th " " " " ..	10	17	796	43	10	17	871	43
Total ..	70	122	4,506	293	70	116	4,471	291
Battalion, 13th Frontier Force Rifles ..					10	19	708	50
" " " " " (Wilde's)	5	Battalions at			10	19	728	50
" " " " " ..	11				11	19	733	50
" " " " " ..	12	21	742	50	13	18	733	49
" " " " " ..	1	Battalion (Training) at			12	19	721	50
" " " " " ..	10	17	796	43	10	18	817	43
Total ..	70	122	4,506	293	66	112	4,440	292
Battalion, 14th Punjab Regiment ..					12	20	666	49
" " " " " (Duke of Cambridge's Own (Brownlow's)).	5	Battalions at			13	19	697	49
Battalion, 14th Punjab Regiment ..	12	21	742	50	11	19	676	50
" " " " " ..	1	Battalion (Training) at			12	18	710	50
" " " " " ..	10	17	796	43	12	18	716	50
" " " " " ..	10	17	796	43	11	15	1,004	43
Total ..	70	122	4,506	293	71	109	4,469	291
Carried over ..	858	1,495	55,009	3,577	853	1,400	53,896	3,540

'RETURN SHOWING THE ACTUAL STRENGTH OF THE ARMY AND ROYAL AIR FORCE IN INDIA INCLUDING PERSIAN GULF PORTS, THE E. P. FORCE, S. PERSIA AND S. E. PERSIA AND ADEN ON THE 1ST OCTOBER 1926' [280v] (22/54)

INDIAN INFANTRY—contd.

Units.	SANCTIONED ESTABLISHMENT.				ACTUAL STRENGTH.			
	Officers with King's Commn.	Indian Officers.	Indian Other Ranks.	Fol-lowers.	Officers with King's Commn.	Indian Officers.	Indian Other Ranks.	Fol-lowers.
Brought forward ..	858	1,495	55,009	3,577	853	1,400	53,896	3,577
Indian Infantry—contd.								
1st Battalion, 15th Punjab Regiment ..	12	18	730	12	18	730		
2nd " " " " ..	11	19	708	11	19	708		
3rd " " " " ..	13	20	666	13	20	666		
4th " " " " ..	12	19	706	12	19	706		
10th " " " " ..	9	15	702	9	15	702		
Total ..	57	99	3,614	235	57	91	3,512	235
1st Battalion, 16th Punjab Regiment ..	3				12	20	731	
3rd " " " " ..	12	21	742	50	10	18	708	
4th " " " " (Bhopal) ..	1				11	21	724	
10th " " " " (a) ..	8	13	495	27	8	14	499	
Total ..	44	76	2,721	177	41	73	2,662	177
1st Battalion, 17th Dogra Regiment (Prince of Wales's Own) ..	3				13	18	717	
2nd " " " " ..	12	21	742	50	11	20	649	
3rd " " " " ..	1				13	19	652	
10th " " " " ..	8	13	496	27	8	13	664	
Total ..	44	76	2,722	177	45	70	2,682	177
1st Battalion, 18th Royal Garhwal Rifles ..	3				11	21	725	
2nd " " " " ..	12	21	742	50	13	20	733	
3rd " " " " ..	1				12	21	682	
10th " " " " ..	8	13	496	27	8	12	521	
Total ..	44	76	2,722	177	44	74	2,661	177
1st Battalion, 19th Hyderabad Regt. (Russell's) ..	4				12	18	743	
2nd " " " " ..					12	20	690	
3rd " " " " (Berar) ..	12	21	742	50	12	19	700	
1st Kumaon Rifles ..					13	18	741	
10th " " " " (Russell's) ..	9	15	646	35	6	15	645	
Total ..	57	99	3,614	235	55	90	3,519	235
1st Battalion, 20th Burma Rifles ..	2				15	18	685	
2nd " " " " ..	12	21	746	50	10	15	546	
10th " " " " (a) ..	7	11	346	19	6	6	466	
Total ..	31	53	1,830	119	31	39	1,697	119
Carried over ..	1,135	1,974	72,232	4,697	1,126	1,837	70,629	4,697

(a) Excludes strength of Training Companies of units on Imperial charge.

'RETURN SHOWING THE ACTUAL STRENGTH OF THE ARMY AND ROYAL AIR FORCE IN INDIA INCLUDING PERSIAN GULF PORTS, THE E. P. FORCE, S. PERSIA AND S. E. PERSIA AND ADEN ON THE 1ST OCTOBER 1926' [281r] (23/54)

INDIAN INFANTRY—*contd.* 17

Units.	SANCTIONED ESTABLISHMENT.				ACTUAL STRENGTH.			
	Officers with King's Commn.	Indian Officers.	Indian Other Ranks.	Fol-lowers.	Officers with King's Commn.	Indian Officers.	Indian Other Ranks.	Fol-lowers.
Brought forward ..	1,135	1,974	72,232	4,697	1,126	1,837	70,629	4,645
Indian Infantry—<i>concl'd.</i>								
(GURKHAS.)								
Battalion, 1st K. G. O. Gurkha Rifles ..	13 for each Battalion. (Including Strength of Training Company)	23 (a) 935	58	13	21	884	58	
" " " " " " ..				13	23	896	58	
Battalion, 4th Gurkha Rifles ..				13	22	907	58	
" " " " " " ..				14	21	807	58	
Total ..	52	92	(a)3,740	232	53	87	3,594	232
Battalion, 2nd K. E. O. Gurkha Rifles ..	13 3 Battalions at (a) 23 935	58	14	21	912	57		
" " " " " " ..			13	22	852	58		
Battalion, 9th Gurkha Rifles ..			14	23	910	58		
" " " " " " ..	13 (Including Strength of T. C.)	24 934	58	12	23	916	58	
Total ..	52	93	(a)3,739	232	53	89	3,590	231
Battalion, 3rd Q. A. O. Gurkha Rifles ..	13 for each Battalion. (Including Strength of Training Company).	23 (a) 935	58	13	20	890	58	
" " " " " " ..				13	20	890	57	
Battalion, 8th Gurkha Rifles ..				13	22	884	53	
" " " " " " ..	13	21	888	56				
Total ..	52	92	(a)3,740	232	52	83	3,552	224
Battalion, 5th Royal Gurkha Rifles (F.F.)	13 for each Battalion. (Including Strength of Training Company)	23 (a) 935	58	13	23	902	55	
" " " " " " ..				15	19	885	50	
Battalion, 6th Gurkha Rifles ..				13	20	891	58	
" " " " " " ..	15	23	913	54				
Total ..	52	92	(a)3,740	232	56	85	3,601	217
Battalion, 7th Gurkha Rifles ..	13 for each Battalion. (Including Strength of Training Company)	23 (a) 935	58	13	23	887	57	
" " " " " " ..				13	21	898	58	
Battalion, 10th Gurkha Rifles ..				13	21	886	56	
" " " " " " ..	11	21	870	57				
Total ..	52	92	(a)3,740	232	50	86	3,541	228
Total Gurkha Battalions ..	260	461	(a)18,699	1,160	264	420	17,878	1,132
TOTAL INDIAN INFANTRY BATTALIONS IN INDIA	1,395	2,435	90,931	5,857	1,390	2,267	88,507	5,777

(a) Includes Recruit Boys at 15 per Training Company. Revised Peace Establishment vide A. I. (I.) No. B. 102 of 1926.

'RETURN SHOWING THE ACTUAL STRENGTH OF THE ARMY AND ROYAL AIR FORCE IN INDIA INCLUDING PERSIAN GULF PORTS, THE E. P. FORCE, S. PERSIA AND S. E. PERSIA AND ADEN ON THE 1ST OCTOBER 1926' [282r] (25/54)

PIONEER BATTALIONS. 19

Units.	SANCTIONED ESTABLISHMENT.				ACTUAL STRENGTH.			
	Officers with King's Commn.	Indian Officers.	Indian Other Ranks.	Fol-lowers.	Officers with King's Commn.	Indian Officers.	Indian Other Ranks.	Fol-lowers.
Pioneer Battalions, 12.								
Battalion, 1st Madras Pioneers (King George's Own).	2 Battalions at				12	17	683	30
Battalion, 1st Madras Pioneers ..	12	17	720	38	12	16	670	37
" " " " ..	1 Battalion (Training) at							
" " " " ..	8	10	333	19	7	9	343	19
Total ..	32	44	1,773	95	31	42	1,696	86
Battalion, 2nd Bombay Pioneers ..	3 Battalions at				12	17	646	28
" " " " ..	12	17	720	38	11	15	687	37
" " " " ..	1 Battalion (Training) at				12	12	709	28
" " " " (a) ..	9	12	476	27	9	10	407	27
Total ..	45	63	2,636	141	44	54	2,449	140
Battalion, 3rd Sikh Pioneers ..	3 Battalions at				13	16	702	37
" " " " ..	12	17	720	38	12	16	718	38
1 Royal Bn., " " " " ..	1 Battalion (Training) at				13	16	713	38
1st Battalion, " " " " ..	9	12	476	27	9	11	490	27
Total ..	45	63	2,636	141	47	59	2,623	140
Battalion, 4th Hazara Pioneers ..	13	19	925	46	10	17	927	46
Total Pioneer Battalions ..	135	189	7,970	423	132	172	7,695	412
Training Companies affiliated to Pioneers serving overseas.								
1st Battalion, 2nd Bombay Pioneers ..	1	2	143	8	1	2	78	9
TOTAL ..	1	2	143	8	(b)1	(b)2	(b)78	(b)9

(a) Excludes strength of Training Companies of units serving overseas on Imperial charge.
(b) These are excluded from the strength of Training Battalion.

'RETURN SHOWING THE ACTUAL STRENGTH OF THE ARMY AND ROYAL AIR FORCE IN INDIA INCLUDING PERSIAN GULF PORTS, THE E. P. FORCE, S. PERSIA AND S. E. PERSIA AND ADEN ON THE 1ST OCTOBER 1926' [282v] (26/54)

Units.	SANCTIONED ESTABLISHMENT.					ACTUAL STRENGTH.				
	Officers with King's Commn.	British Other Ranks.	Indian Officers.	Indian Other Ranks.	Fol-lowers.	Officers with King's Commn.	British Other Ranks.	Indian Officers.	Indian Other Ranks.	
UNITS SERVING IN ADEN.										
Roya Garrison Artillery.										
Headquarters	
4th Heavy Battery	13	217	2	13	212	Artillery
35th " "	Artillery Train
British Infantry.										
2nd Battalion, The Devonshire Regiment (Aden)	28	853	62	26	803	Inf. Regt.
Cavalry.										
Aden Troop	1	..	5	154	75	1	..	5	148	Sapp
Sappers and Miners.										
23rd (Fortress) Company, Royal Bombay Sappers and Miners.	1	1	1	50	2	1	1	1	47	Miners
Aden Defence Light Section	1	29	1	19	..	1	29	1	18	Sappers
Signal Units.										
Aden Signal Section	1	12	..	47	5	1	12	..	47	Signal
Indian Infantry.										
4th Battalion, 11th Sikh Regiment	12	..	21	742	50	14	..	20	669	Inf. Regt.
Training Company " "	1	..	2	149	8	1	..	3	218	Training Co
TOTAL	58	1,112	30	1,161	204	58	1,057	30	1,147	

'RETURN SHOWING THE ACTUAL STRENGTH OF THE ARMY AND ROYAL AIR FORCE IN INDIA INCLUDING PERSIAN GULF PORTS, THE E. P. FORCE, S. PERSIA AND S. E. PERSIA AND ADEN ON THE 1ST OCTOBER 1926' [283r] (27/54)

(283)

COMBATANT SERVICES—INDIAN ARMY RESERVE. 21

Units.	SANCTIONED ESTABLISHMENT.			ACTUAL STRENGTH.		
	Class A.	Class B.	TOTAL.	Class A.	Class B., I & II.	TOTAL.
Artillery.						
Royal Artillery	351	714	1,065	20	396	416
Artillery Training Centre	461	860	1,321	113	243	356
TOTAL ROYAL ARTILLERY RESERVES	812	1,574	(a) 2,386	133	639	772
Sappers and Miners.						
George's Own Bengal Sappers and Miners	641	1,069	1,710	14	227	241
Queen Victoria's Own Madras Sappers and Miners				17	219	236
Royal Bombay Sappers and Miners				5	225	230
Madras Sappers and Miners				7	23	30
TOTAL SAPPER AND MINER RESERVES	641	1,069	(a) 1,710	43	694	737
Signals.						
Signal Training Centre, India	270	631	(a) 901	55	104	159

(a) Peace Establishment, vide J. A. O. No. 947 of 1925.

'RETURN SHOWING THE ACTUAL STRENGTH OF THE ARMY AND ROYAL AIR FORCE IN INDIA INCLUDING PERSIAN GULF PORTS, THE E. P. FORCE, S. PERSIA AND S. E. PERSIA AND ADEN ON THE 1ST OCTOBER 1926' [283v] (28/54)

INDIAN CAVALRY.

Units.	SANCTIONED ESTABLISHMENT.			ACTUAL STRENGTH.		
	Class A.	Class B.	TOTAL.	Class A.	Class B, I & II.	TOTAL.
1st D. Y. O. Skinner's Horse	51	117		
2nd Lancers (Gardner's Horse)	for each Regiment			14	132	146
3rd Cavalry	153	351	504
4th D. C. O. Hodson's Horse	for each Regiment		
5th K. E. O. Probyn's Horse	for each Regiment			14	126	140
6th D. C. O. Lancers	for each Regiment		
7th Light Cavalry	for each Regiment		
8th K. G. O. Light Cavalry	for each Regiment			16	50	66
9th Royal Deccan Horse	for each Regiment		
10th Q. V. O. Corps of Guides Cavalry F. F.	51	78	
11th P. A. V. O. Cavalry F. F.	for each Regiment			36	110	146
12th Cavalry F. F.	Total		
13th D. C. O. Lancers	765	1,170	1,935
14th P. W. O. Scinde Horse	for each Regiment			29	82	111
15th Lancers	for each Regiment		
16th Light Cavalry	for each Regiment		
17th Q. V. O. Poona Horse	for each Regiment			25	86	111
18th K. E. O. Cavalry	for each Regiment		
19th K. G. O. Lancers	51	117	
20th Lancers	for each Regiment			14	83	97
21st K. G. O. Central India Horse	153	351	504
TOTAL CAVALRY	(a) 1,071	(a) 1,872	(a) 2,943	148	669	817

(a) Peace Establishment, vide I. A. O. No. 947 of 1925.

'RETURN SHOWING THE ACTUAL STRENGTH OF THE ARMY AND ROYAL AIR FORCE IN INDIA INCLUDING PERSIAN GULF PORTS, THE E. P. FORCE, S. PERSIA AND S. E. PERSIA AND ADEN ON THE 1ST OCTOBER 1926' [284r] (29/54)

INDIAN ARMY RESERVE—contd.

INDIAN INFANTRY.

284
23

Units.	SANCTIONED ESTABLISHMENT.			ACTUAL STRENGTH.		
	Class A.	Class B.	TOTAL.	Class A.	Class B, I & II.	TOTAL.
Indian Infantry.						
Punjab Regiment	385	1,135 at 77 per (active) unit.	1,520 304	164	650	814
Punjab Regiment	308	908	*1,216	77	407	484
Madras Regiment	77	227	304	56	240	296
Bombay Grenadiers	308	908	1,216	206	744	950
Mahratta Light Infantry	385	1,135	1,520	155	722	877
Rajputana Rifles	385	1,135	1,520	256	897	1,153
Rajput Regiment	385	1,135	1,520	125	873	998
Punjab Regiment	385	1,135	1,520	264	512	776
Jat Regiment	231	681	912	80	562	642
14th Baluch Regiment	385	1,135	1,520	139	542	681
Carried over	3,234	9,534	12,768	1,522	6,149	7,671

* Excludes the reservists of the 5th Battalion serving overseas.

'RETURN SHOWING THE ACTUAL STRENGTH OF THE ARMY AND ROYAL AIR FORCE IN INDIA INCLUDING PERSIAN GULF PORTS, THE E. P. FORCE, S. PERSIA AND S. E. PERSIA AND ADEN ON THE 1ST OCTOBER 1926' [284v] (30/54)

INDIAN INFANTRY—*contd.*

Units.	SANCTIONED ESTABLISHMENT.			ACTUAL STRENGTH.		
	Class A.	Class B.	TOTAL.	Class A.	Class B, I & II.	TOTAL.
Brought forward	3,234	9,534	12,768	1,522	6,149	7,671
Indian Infantry—<i>contd.</i>						
11th Sikh Regiment	308	908	*1,216	133	516	649
12th Frontier Force Regiment	335	1,135	1,520	97	586	683
13th Frontier Force Rifles	385	1,135	1,520	130	611	741
14th Punjab Regiment	385	1,135	1,520	186	627	813
15th Punjab Regiment	308	908	1,216	140	623	763
16th Punjab Regiment	231	681	†912	86	506	632
17th Dogra Regiment	231	681	912	59	363	422
18th Royal Garhwal Regiment	231	681	912	63	620	683
19th Hyderabad Regiment	308	908	‡1,216	79	1,177	1,256
20th Burma Rifles	154	454	§ 608	170	42	212
Carried over	6,160	18,160	24,320	2,665	11,823	14,488

* Excludes the reservists of 4th Battalion serving at Aden.
 † " " " 2nd " " overseas (Iraq).
 ‡ " " " 4th " " " " " "
 § " " " 3rd " " " " (Malay States).

'RETURN SHOWING THE ACTUAL STRENGTH OF THE ARMY AND ROYAL AIR FORCE IN INDIA INCLUDING PERSIAN GULF PORTS, THE E. P. FORCE, S. PERSIA AND S. E. PERSIA AND ADEN ON THE 1ST OCTOBER 1926' [285v] (32/54)

26

INDIAN ARMY RESERVE—*concl.*

PIONEER BATTALIONS.

Units.	SANCTIONED ESTABLISHMENT.			ACTUAL STRENGTH.		
	Class A.	Class B.	TOTAL.	Class A.	Class B, I & II.	TOTAL.
Pioneer Battalions.						
1st Madras Pioneers	110	200 at 55 per (active)	310 155 unit.	73	223	296
2nd Bombay Pioneers	165	300	* 465	81	395	476
3rd Sikh Pioneers	165	300	465	30	321	351
1st Battalion, 4th Hazara Pioneers	48	33	81	..	63	81
TOTAL PIONEERS RESERVISTS.	488	833	*(a)1,321	184	1,002	1,186

(a) Includes 48 Class I and 33 Class II of 1-4th Hazara Pioneers.
* Excludes the reservists of the 4th Battalion serving overseas (Iraq).

'RETURN SHOWING THE ACTUAL STRENGTH OF THE ARMY AND ROYAL AIR FORCE IN INDIA INCLUDING PERSIAN GULF PORTS, THE E. P. FORCE, S. PERSIA AND S. E. PERSIA AND ADEN ON THE 1ST OCTOBER 1926' [286r] (33/54)

MECHANICAL TRANSPORT. 27

Units.	SANCTIONED ESTABLISHMENT.							ACTUAL STRENGTH.						
	Officers with King's Commn.	British Other Ranks.	Indian Officers.	Indian Other Ranks.	CIVILIANS. Clerks and Store-keepers.	Indian artificers.	Followers.	Officers with King's Commn.	British Other Ranks.	Indian Officers.	Indian Other Ranks.	CIVILIANS. Clerks and Store-keepers.	Indian artificers.	Followers.
Group Commanders ..	6	3	8	..	3							
Motor Ambulance Convoys	22	52	10	110	21	180	60							
Motor M. T. Companies ..	42	146	13	799	30	212	210	126	395	32	1,418	270	1,063	673
Light M. T. Companies ..														
Motor Van Sections ..	2	4	2	98	4	28	17							
Motor T. Coy. (Mobile Repair Units).	12	32	..	72	12	116	20							
Motor T. Training Centre ..	5	16	4	229	7	9	16							
Motor M. T. Stores Depot ..	7	14	..	9	103	31	98							
Motor Repairs Shop (M. T.) ..	18	123	6	46	74	506	212							
Technical Inspectors ..	7	6	..	4	5	..	12							
Motor T., Aden ..	1	6	1	55	3	15	7							
Motor T., Persia	2	..	1	..							
Motor Reserve ..	10							
TOTAL ..	132	399	36	1,427	267	1,098	655	126	395	32	1,418	270	1,063	673
Motor Servants	1,468	1,418

'RETURN SHOWING THE ACTUAL STRENGTH OF THE ARMY AND ROYAL AIR FORCE IN INDIA INCLUDING PERSIAN GULF PORTS, THE E. P. FORCE, S. PERSIA AND S. E. PERSIA AND ADEN ON THE 1ST OCTOBER 1926' [286v] (34/54)

Units.	SANCTIONED ESTABLISHMENT.						ACTUAL STRENGTH.					
	Officers with King's Commn.	British Other Ranks.	Indian Officers.	Indian Other Ranks.	Civilians.	Followers.	Officers with King's Commn.	British Other Ranks.	Indian Officers.	Indian Other Ranks.	Civilians.	Followers.
Mule Corps Units.												
Infantry Bde. Transport Cos. ..	22	22	44	4,345	33	682	89	96	182	14,959	145	217
Mule Transport Coy. (L. E.) ..	9	18	18	1,017	18	216						
Divisional Troops Transport Cos. ..	20	20	50	4,520	30	690						
Cavalry Brigade Transport Cos. ..	6	6	15	1,473	12	222						
Transport Depots ..	6	6	9	669	18	126						
Camel Transport Cos. ..	4	4	12	872	6	88						
Camel Transport Cos. (L. E.) ..	4	4	16	384	8	60						
Camel Transport Cos. Silladar ..	3	..	18	1,053	9	69						
Bullock Troops (L. E.)	561						
Aden Transport Corps ..	1	1	2	232	2	27						
Gulf Ports Transport	14						
Transport Establishment, Gilgit	52	..	4						
Training and Leave Reserve ..	16	7	12	..						
TOTAL ..	(a) 91	88	184	15,192	148	2,184						
Driver Reservists	3,643	1,094

(a) Includes 4 Departmental officers.

'RETURN SHOWING THE ACTUAL STRENGTH OF THE ARMY AND ROYAL AIR FORCE IN INDIA INCLUDING PERSIAN GULF PORTS, THE E. P. FORCE, S. PERSIA AND S. E. PERSIA AND ADEN ON THE 1ST OCTOBER 1926' [287r] (35/54)

COMBATANT SERVICES—AUXILIARY FORCE—INDIA.

ARTILLERY ENGINEERS.

29

ARTILLERY AND ENGINEERS.

Corps.	APPOINTED STRENGTH.	ENROLLED STRENGTH OF —										TOTAL ALL RANKS (EXCLUDING CADET).			
		ARTILLERY.					ROYAL ENGINEERS.								
		Active.		Reserve.		Cadet.	Active.		Reserve.		Cadet.			Superm- ernary officers.	Artill- ery.
Officers.	Other ranks.	Officers.	Other ranks.	Officers.	Other ranks.	Officers.	Other ranks.	Officers.	Other ranks.	Officers.	Other ranks.	Superm- ernary officers.	Artill- ery.	Electri- cians, Engi- neers.	
Royal Garrison Artillery.															
No. 1 Brigade (Calcutta, Port Defence)	288	10	62	136	208	..
No. 11 (Madras) Brigade "The Duke's Own"	190	12	75	39	126	..
No. 3 (Rangoon) Brigade (b)	224	11	184	24	219	..
No. 4 (Cossipore) Brigade	288	16	188	292	466	..
No. 5 (Bombay) Brigade	190	10	52	89	101	..
No. 6 (Lucknow) Brigade	190	6	148	22	176	..
No. 14 Battery (Bangalore)	70	4	88	5	97	..
No. 15 Battery (Kinnee)	30	1	24	5	30	..
No. 16 Battery (Delhi)	77	2	26	8	36	..
No. 17 Battery (Agra)	77	3	34	20	57	..
No. 18 Battery (Bareilly)	70	2	23	6	31	..
No. 19 Battery (Allahabad)	77	2	43	19	64	..
No. 20 Battery (Cawnpore)	70	2	34	12	48	..
Royal Engineers.															
No. 1 (Calcutta) Company	100	71
No. 2 (Rangoon)	160	161
No. 3 (Bombay)	110	51
No. 4 (Karachi)	70	86
No. 5 (Madras)	70	78
GRAND TOTAL	2,351	81	981	587	1,649	447

(a) Peace Establishments, vide L. A. O. No. 733 of 1926.
(b) Includes strength of M. G. Company (123).

'RETURN SHOWING THE ACTUAL STRENGTH OF THE ARMY AND ROYAL AIR FORCE IN INDIA INCLUDING PERSIAN GULF PORTS, THE E. P. FORCE, S. PERSIA AND S. E. PERSIA AND ADEN ON THE 1ST OCTOBER 1926' [287v] (36/54)

CAVALRY.

CAVALRY.

Corps.	ENROLLED STRENGTH OF —											TOTAL ALL RANKS (EXCLUDING CADET).				
	AUTHORISED STRENGTH.		MOUNTED.				DEMOUNTED AND INFANTRY.				TOTAL ALL RANKS (EXCLUDING CADET).					
	Mounted.	Dismounted (Infantry)	Active.	Reserve.	Cadet.	Superintending officers.	Active.	Reserve.	Cadet.	Superintending officers.	Other ranks.	Dis-mounted Infantry.				
The Bihar Light Horse	220	230	13	42	92	44	140	147	188
The Calcutta Light Horse	320	..	15	168	107	290	..
The Surma Valley Light Horse	420	..	24	260	127	411	..
The Assam Valley Light Horse	600	200	17	345	177	103	110	..	47	539	221
The United Provinces Horse (S. R.)	314	..	18	143	183	344	..
The Bombay Light Horse	118	..	9	50	88	97	..
The Northern Bengal Mounted Rifles	480	135	24	266	168	89	31	..	171	458	129
The Punjab Light Horse	240	..	8	126	99	233	..
The Southern Provinces Mounted Rifles	558	..	26	270	243	539	..
The Chota Nagpur Regiment	250	563	11	49	140	156	257	200	425
GRAND TOTAL	(a) 3,320	(a) 1,128	165	1,719	1,374	332	538	..	218	3,258	963

(a) Town Establishment vide I. A. O. No. 731 of 1926.

'RETURN SHOWING THE ACTUAL STRENGTH OF THE ARMY AND ROYAL AIR FORCE IN INDIA INCLUDING PERSIAN GULF PORTS, THE E. P. FORCE, S. PERSIA AND S. E. PERSIA AND ADEN ON THE 1ST OCTOBER 1926' [288r] (37/54)

288

AUXILIARY FORCE—INDIA--contd. 31

MACHINE GUN CORPS.

Corps.	AUTHORISED STRENGTH.	ENROLLED STRENGTH OF—								Total all ranks (excluding Cadets).
		ACTIVE.		RESERVE.		CADET.		Super-numerary officers.		
		O.	O. R.	O.	O. R.	O.	O. R.			
Machine Gun Corps.										
No. 1 (Coorg and Mysore) Company ..	110	6	25	..	48	79
No. 2 (Karachi) Company ..	120	1	21	..	23	45
No. 4 (Delhi) Company ..	78	2	30	..	29	61
No. 5 (Agra) Company (a) ..	157	3	78	..	73	..	16	154
No. 7 (Lucknow) Company ..	150	5	83	..	8	96
No. 11 (Allahabad) Company ..	120	4	46	..	9	59
No. 12 (Cawnpore) Company ..	109	2	81	..	17	100
No. 13 (Yercaud) Company ..	78	2	10	..	23	35
Total ..	922	25	374	..	230	..	16	629
Royal Army Service Corps.										
No. 2 (Calcutta) Company ..	2
No. 3 (Bombay) Company ..	35	2	22	..	9	33
No. 5 (Cawnpore) Company ..	35	1	3	..	28	32
Total ..	72	3	25	..	37	65

(a) Includes strength of L. M. Patrol.

'RETURN SHOWING THE ACTUAL STRENGTH OF THE ARMY AND ROYAL AIR FORCE IN INDIA INCLUDING PERSIAN GULF PORTS, THE E. P. FORCE, S. PERSIA AND S. E. PERSIA AND ADEN ON THE 1ST OCTOBER 1926' [288v] (38/54)

RAILWAY CORPS.

Corps.	AUTHORISED STRENGTH.	ENROLLED STRENGTH OF—							Total all ranks (including Cadets).
		ACTIVE.		RESERVE.		CADET.		Superm. memory officers.	
		O.	O. R.	O.	O. R.	O.	O. R.		
Railway Corps.									
East Indian Railway Regiment—									
1st Battalion	970	41	515	..	414	970
2nd „	970	41	475	..	441	967
3rd „	970	37	482	..	405	924
The Eastern Bengal Railway Battalion ..	740	28	225	..	424	677
The Great Indian Peninsula Railway Regiment—									
1st Battalion	1,284	53	594	..	552	1,199
2nd „	716	12	358	..	310	680
The Bombay, Baroda and Central India Railway Regiment—									
1st Battalion	600	34	259	..	250	543
2nd „	860	36	484	..	353	..	14	..	(a) 873
The Burma Railways Battalion ..	1,007	22	548	..	542	1,112
The Bengal and North-Western Railway Regiment.	320	17	108	..	193	..	2	..	318
The North-Western Railway Regiment—									
1st Battalion	920	29	452	..	462	943
2nd „	650	18	292	..	226	536
The South Indian Railway Regiment ..	1,308	53	632	..	725	1,410
The Madras and Southern Mahratta Railway Regiment—									
1st Battalion	1,150	45	649	..	568	1,262
2nd „	720	15	346	..	282	643
The Bengal-Nagpur Railway Regiment—									
1st Battalion	860	25	345	..	405	775
2nd „	700	25	362	..	299	686
The Assam-Bengal Railway Battalion ..	440	20	220	..	142	382
(b) Total		15,185	551	7,346	..	6,993	..	16	14,890

(a) Includes 29 men of Signal Corps, Ajmer Section.
(b) Peace Establishments, vide I. A. O. No. 733 of 1926.

'RETURN SHOWING THE ACTUAL STRENGTH OF THE ARMY AND ROYAL AIR FORCE IN INDIA INCLUDING PERSIAN GULF PORTS, THE E. P. FORCE, S. PERSIA AND S. E. PERSIA AND ADEN ON THE 1ST OCTOBER 1926' [289r] (39/54)

AUXILIARY FORCE—INDIA—concl'd. 33 289

INFANTRY.

CATEG.	CORPS.	AUTHORISED STRENGTH	ENROLLED STRENGTH OF—						Supernumerary officers.	Total all ranks (excluding Cadets).
			ACTIVE.		RESERVE.		CADET.			
			O.	O. R.	O.	O. R.	O.	O. R.		
	Infantry.									
	The Madras Guards	516	19	285	..	128	..	59	..	432
	The Nagpur Rifles	540	13	191	..	271	..	106	..	475
	The Punjab Rifles	640	15	220	..	190	..	62	..	425
	The Simla Rifles	350	13	142	..	95	..	60	..	250
	The Bangalore Battalion	598	14	275	..	74	..	68	..	363
	The Allahabad Rifles	226	5	90	..	110	..	57	..	205
	The Dehra Dun Contingent (c)	316	14	167	..	97	..	56	..	278
	The Breilly Contingent (c)	337	9	175	..	109	..	81	..	293
	The Tenasserim Battalion	460	12	201	..	151	..	21	..	364
	The Bombay Battalion (d)	780	27	328	..	290	645
	The Cawnpore Rifles	268	5	111	..	77	193
	The Rangoon Battalion (b)	1,147	19	462	..	382	..	20	..	863
	The Nilgiri Malabar Battalion	587	25	559	..	158	..	116	..	(a)742
	The Sind Rifles (b)	332	10	209	..	153	372
	The Hyderabad Rifles	500	10	328	..	109	447
	The Baluchistan Company	44	1	16	..	19	36
	The Upper Burma Battalion (b)	842	20	358	..	261	..	30	..	639
	The Poona Rifles	350	10	183	..	135	..	35	..	328
	The Calcutta and Presidency Battalion	1,000	24	706	..	276	..	173	..	1,006
	The East Coast Battalion	400	12	323	..	48	..	40	..	383
	The Eastern Bengal Company	248	4	137	..	87	228
	The Kolar Gold Field Battalion	720	26	273	..	229	..	44	..	528
	The Calcutta Scottish	650	20	273	..	201	494
	The Delhi Contingent (b)	401	6	174	1	66	247
	The Field Ambulance Auxiliary Force Medical Corps.	219
	Total Infantry	12,471	333	6,186	1	3,716	..	1,028	..	10,236

(a) Includes Auxiliary Officers Corps.
(b) Includes Strength of Cavalry.
(c) Includes Strength of L. M. Patrols.
(d) Includes Strength of M. G. C.

HC42FA

'RETURN SHOWING THE ACTUAL STRENGTH OF THE ARMY AND ROYAL AIR FORCE IN INDIA INCLUDING PERSIAN GULF PORTS, THE E. P. FORCE, S. PERSIA AND S. E. PERSIA AND ADEN ON THE 1ST OCTOBER 1926' [289v] (40/54)

INDIAN TERRITORIAL FORCE.

Unit.	SANCTIONED ESTABLISHMENT.			ENROLLED STRENGTH.		
	Officers.	Other ranks.	Total all ranks.	Officers.	Other ranks.	Total all ranks.
UNIVERSITY TRAINING CORPS.						
1st (Bombay) Battalion				14	564	578
2nd (Calcutta) Battalion				7	653	660
3rd (United Provinces) Battalion				23	592	615
4th (Punjab) Battalion				22	498	520
5th (Madras) Battalion				15	620	635
6th (Burma) Battalion				5	506	511
7th (Patna) Company				2	159	161
9th (Delhi) Company	161	161
	27 6 for each battalion and for each company.	637 159	664 165			
Total	174	4,140	4,314	88	3,758	3,846

'RETURN SHOWING THE ACTUAL STRENGTH OF THE ARMY AND ROYAL AIR FORCE IN INDIA INCLUDING PERSIAN GULF PORTS, THE E. P. FORCE, S. PERSIA AND S. E. PERSIA AND ADEN ON THE 1ST OCTOBER 1926' [290r] (41/54)

INDIAN TERRITORIAL FORCE—*contd.* 35 290

Unit.	SANCTIONED ESTABLISHMENT.			ENROLLED STRENGTH.		
	Officers.	Other ranks.	Total all ranks.	Officers.	Other ranks.	Total all ranks.
INFANTRY BATTALIONS.						
11th Battalion, 1st Punjab Regiment				19	508	527
11th " 3rd Madras Regiment				17	703	720
12th " " " "				11	635	646
13th " " " "				16	674	690
14th " " " "				28	457	485
11th " 4th Bombay Grenadiers				26	618	644
11th " 5th Mahratta Light Infantry				14	631	645
11th " 7th Rajput Regiment				10	685	695
12th " " " "				20	614	634
11th " 9th Jat Regiment	(a) 28	(a) 710	(a) 738	18	556	574
11th " 12th Frontier Force Regiment	for each battalion.			20	667	687
11th " 13th Frontier Force Rifles				17	575	592
11th " 14th Punjab Regiment				11	618	629
11th " 15th " "				20	665	685
11th " 17th Dogra Regiment				23	579	602
11th " 18th Royal Garhwal Rifles				14	459	473
11th " 19th Hyderabad Regiment				12	560	572
11th " 20th Burma Rifles				19	635	654
11th " 2nd Bombay Pioneers				19	508	527
12th " " " "				11	85	96
Total	560	14,200	14,760	345	11,432	11,777

(a) Provisional Peace Establishments, vide A. I. (L) No. 715 of 1924.

'RETURN SHOWING THE ACTUAL STRENGTH OF THE ARMY AND ROYAL AIR FORCE IN INDIA INCLUDING PERSIAN GULF PORTS, THE E. P. FORCE, S. PERSIA AND S. E. PERSIA AND ADEN ON THE 1ST OCTOBER 1926' [290v] (42/54)

36 COMBATANT SERVICES—MILITARY POLICE AND LEVIES.

Units.	Mounted.	Foot.
Swat Levies	30	179
Dir Levies	34	351
Kurram Militia	105	1,229
Chitral Levy Corps	4	106
Chitral Scouts	990
Zhob Levy Corps	168	1,085
Mekran Levy Corps	192	246
Tochi Scouts	119	2,189
South Waziristan Scouts	125	2,622
Gilgit Scouts	660
Chagai District Levies	94	72
Chagai Levy Corps	28	147
1st (Lushai Hills) Battalion, Assam Rifles	629
2nd (Lakhimpur) Battalion " "	692
3rd (Naga Hills) Battalion " "	704
4th Battalion, Assam Rifles	679
5th " " " "	695
Eastern Frontier Rifles (Bengal Battalion)	824
Mewar Bhil Corps	633
Malwa Bhil Corps	314
Chin Hills Battalion	30	888
Bhamo Battalion	75	820
Eastern Police Battalion, Myitkyina	45	971
Western Police Battalion, Myitkyina	48	839
Northern Shan States Battalion (Lashio)	74	637
Southern Shan States Battalion	90	882
Mandalay Battalion	141	1,293
Rangoon Battalion	115	2,135
Arakan Hill Tracts Battalion	149
Reserve Battalion	148	898
Carried over	1,665	24,500

'RETURN SHOWING THE ACTUAL STRENGTH OF THE ARMY AND ROYAL AIR FORCE IN INDIA INCLUDING PERSIAN GULF PORTS, THE E. P. FORCE, S. PERSIA AND S. E. PERSIA AND ADEN ON THE 1ST OCTOBER 1926' [291r] (43/54)

COMBATANT SERVICES—INDIAN STATE FORCES. 291

Units.	Authorised strength.	Actual strength.	REMARKS.
Artillery.			
Bikaner Camel Pack Battery	260	104	
Kashmir No. 1 Pack Battery	260	266	
Kashmir No. 2 Pack Battery	260	267	
Kashmir No. 3 Pack Battery	260	262	
TOTAL	1,040	899	
Cavalry.			
Ali-Rajpur Cavalry	34	..	
Alwar Mangal Lancers	392	368	
Alwar Body Guard	100	79	
Bahawalpur's Own Body Guard Lancers	96	90	
Baria State Forces Subbakh Cavalry	25	23	
Baroda 1st Cavalry	526	..	
Baroda 2nd Cavalry	526	..	
Baroda 3rd Cavalry	
Benares 2nd Cavalry Troop	50	49	
Benares 3rd Camel Despatch Riders	20	20	
Bhopal (Victoria) Lancers	140	120	
Bikaner Dungar Lancers	342	273	
Chamba Cavalry	16	17	
Dhar Light Horse	69	66	
Faridkot State Body Guard Lancers	27	27	
Gwalior 1st Jayaji Lancers	526	499	
Gwalior 2nd Alijah Lancers	526	504	
Gwalior 3rd Maharaja Madho Rao Scindia's Own Lancers	526	532	
Gwalior 1st Mounted Infantry (Pugnawisi)	457	..	
Gwalior 2nd Mounted Infantry (Silladari)	457	..	
Gwalior 3rd Mounted Infantry (Silladari)	438	..	
Hyderabad 1st Imperial Service Lancers	544	536	
Hyderabad 2nd Imperial Service Lancers	544	531	
Holkar Escort (Indore)	200	200	
Jaipur Lancers	526	221	
Jind Body Guard Cavalry	112	109	
Jodhpur Sarder Risala	657	667	
Bhavnagar Lancers	264	263	
Cutch State Body Guard	35	..	
Dhrangadhra Body Guard	70	63	
Junagadh Lancers	179	177	
Navanagar Lancers	400	257	
Porbandar Body Guard	34	33	
Kapurthala Body Guard	52	29	
Kashmir Body Guard Cavalry	526	456	
Malerkotla Lancers (Body Guard)	40	47	
Mandi Joginder Lancers	21	20	
Mysore Body Guard	125	..	
Mysore Lancers	526	455	
Mysore Horse	136	..	
Palanpur Body Guard	66	51	
Patiala 1st (Rajindra) Lancers	526	507	
Patiala 2nd Lancers	526	409	
Patiala Horse Guards	139	..	
Bejpipla Body Guard	25	25	
Rampur Lancers	331	310	
Rutlam Despatch Riders	5	5	
Sachin Body Guard	18	18	
Sirmoor State Body Guard Lancers	31	29	
Udaipur Lancers	155	141	
TOTAL CAVALRY	12,106	8,226	
Infantry.			
Ali-Rajpur Infantry	80	77	
Alwar (Jeypaltan) Infantry	775	828	
Alwar (Partap Paltan) Infantry	670	477	
Alwar Garrison Forces	150	94	
Bahawalpur 1st Sadiq Infantry	426	365	
Bahawalpur 2nd Haron Infantry	105	105	
Baria State Force Ranjit Infantry	101	101	
Carried over	2,307	2,047	

HC42FA

'RETURN SHOWING THE ACTUAL STRENGTH OF THE ARMY AND ROYAL AIR FORCE IN INDIA INCLUDING PERSIAN GULF PORTS, THE E. P. FORCE, S. PERSIA AND S. E. PERSIA AND ADEN ON THE 1ST OCTOBER 1926' [291v] (44/54)

38 INDIAN STATE FORCES—contd.

Units.	Authorised strength.	Actual strength.	REMARKS.
Brought forward	2,307	2,047	
Infantry—contd.			
Baroda 1st Battalion	775	..	
Baroda 2nd Battalion	775	..	
Baroda 3rd Battalion	
Benares 1st (Prabhu Narain) Infantry	775	295	
Bharatpur Jaswant Household Infantry	775	757	
" 2nd Ram Singh's Own Infantry	..	347	
" 3rd Baretha Infantry	..	343	
Bhopal Sultaniah Pioneers	749	695	
Bhopal Waliahad Infantry	78	76	
Bikaner Sadul Light Infantry	500	441	
Bikaner Band	35	..	
Chamba Infantry	200	200	
Datia 1st Govind Infantry	187	187	
Datia Govind Infantry	115	36	
Dholpur Narsingh Infantry	153	129	
Dhar Infantry	176	167	
Faridkot State Infantry	112	106	
Faridkot Band	35	34	
Gwalior 1st Maharani Sakhya Raya's Own Battalion	775	..	
Gwalior 2nd Maharaja Jayji Rao's Battalion	775	..	
Gwalior 3rd Maharaja Scindia's Own Battalion	775	795	
Gwalior 4th Maharaja Bahadur Battalion	775	857	
Gwalior 5th Maharaja Jankooji Rao's Pioneer Battalion	485	..	
Gwalior 7th Scindia's Battalion (Training)	480	354	
Idar Sir Partap Infantry	150	121	
Jaipur Infantry	775	363	
Jind Infantry	700	692	
Jind 2nd Line Infantry	150	150	
Jodhpur Sardar Infantry	775	774	
Kapurthala Jagat Jit Infantry	
Kapurthala Training Company	609	591	
Kapurthala 2nd Line Infantry	150	148	
Kashmir 1st Infantry (Raghu Partap Regiment)	775	813	
Kashmir 2nd Rifles (Bodyguard Regiment)	775	808	
Kashmir 3rd Rifles (Ragu Nath Regiment)	775	826	
Kashmir 4th Pioneers	749	759	
Kashmir 5th Light Infantry	775	840	
Kashmir Temple Guards Company	101	100	
Kashmir 6th Pioneers	749	493	
Kashmir Fort Guards	114	114	
Bhavnagar Infantry	219	211	
Cutch State Infantry	359	..	
Dhrangadhra State Makhwan Infantry	413	210	
Limbdii Infantry	36	..	
Navanagar State Infantry	232	153	
Porbandar Infantry	232	120	
Khairpur "Faiz" Light Infantry	232	120	
Loharu State Infantry	216	216	
Malerkotla Infantry	30	..	
Mandi Joginder Infantry	226	206	
Mandi State Band	153	152	
Mudhol Infantry	27	..	
Mysore 1st Infantry	115	80	
Mysore 2nd Infantry	775	..	
Mysore Palace Guard	1,130	..	
Nabha Akal Infantry	500	..	
Palanpur Iqbal Infantry	450	449	
Panna State Chhatrasal Infantry	171	152	
1st Patiala Infantry (Rajindra Sikhs)	153	131	
2nd Patiala Infantry	775	519	
3rd Patiala Infantry	775	524	
4th Patiala Infantry	775	317	
Patiala Foot Guards	775	357	
Rajpipla Infantry	174	..	
1st Rampur Infantry	153	110	
	591	568	
Carried over	29,389	19,933	

'RETURN SHOWING THE ACTUAL STRENGTH OF THE ARMY AND ROYAL AIR FORCE IN INDIA INCLUDING PERSIAN GULF PORTS, THE E. P. FORCE, S. PERSIA AND S. E. PERSIA AND ADEN ON THE 1ST OCTOBER 1926' [292r] (45/54)

(292)

INDIAN STATE FORCES—*concl'd.*

39

Units.	Authorised strength.	Actual strength.	REMARKS.
Brought forward ..	29,389	19,933	
Infantry—<i>concl'd.</i>			
2nd Rampur Infantry	652	580	
Rampur Gurkha Company	153	157	
Sachin Infantry	80	62	
Tehri Pioneers	101	89	
Tehri Headquarters, Infantry and Board	100	96	
*Tripura Infantry	*Not yet organized.
TOTAL INFANTRY ..	30,475	20,917	
Camel Corps.			
Bikaner Ganga Risala	465	459	
Total ..	465	459	
MOTOR MACHINE GUN BATTERIES.			
Bharatpore Motor Machine Gun Sections	
Bhopal Motor Machine Gun Section	
Bikaner Motor Machine Gun Battery (2 Sections)	75	26	
Patiala Motor Machine Gun Section	
Total ..	75	26	
Sappers.			
Dholpur Sappers and Miners (1 Section)	75	..	
Faridkot Sappers {	Headquarters	8	8
	(Field Company) Sappers and Miners	129	128
Malerkotla Sappers {	Headquarters	16	5
	Sappers (Field Company)	295	246
Sirmoor Sappers .. {	Headquarters	5	5
	No. 1 Company	142	136
	No. 2 Company	155	157
	Band	38	36
Tehri Garhwal Sappers and Miners	129	127	
Total ..	992	848	
Transport Corps.			
Gwalior Transport Corps	479	450	
Indore Holkar Transport Corps	266	266	
Jaipur Pony Transport Corps	570	530	
Khairpur Camel Transport Corps	72	72	
Loharu State Camel Transport	30	47	
Total ..	1,317	1,395	

'RETURN SHOWING THE ACTUAL STRENGTH OF THE ARMY AND ROYAL AIR FORCE IN INDIA INCLUDING PERSIAN GULF PORTS, THE E. P. FORCE, S. PERSIA AND S. E. PERSIA AND ADEN ON THE 1ST OCTOBER 1926' [292v] (46/54)

MISCELLANEOUS UNITS.

Units.	SANCTIONED ESTABLISHMENT.					ACTUAL STRENGTH.				
	Officers with King's Commn.	British Other Ranks.	Indian Officers.	Indian Other Ranks.	Follow-ers.	Officers with King's Commn.	British Other Ranks.	Indian Officers.	Indian Other Ranks.	Follow-ers.
His Excellency the Viceroy's Band	28	6	..	25
His Excellency the Governor of Bengal's Band.	..	28	20
His Excellency the Governor of Bombay's Band.	..	21	18
TOTAL	77	6	..	63
Governor General's Body Guard ..	2	..	4	106	61	2	..	4	106	72
Governor's Body Guard, Madras ..	2	..	3	70	38	2	..	3	70	38
Governor's Body Guard, Bombay ..	2	..	2	68	36	2	..	2	67	36
Governor's Body Guard, Bengal ..	2	..	2	70	43	2	..	2	68	43
TOTAL ..	8	..	11	314	178	8	..	11	311	189
Resident's Escort (Nepal)	3	78	12	2	78	12
GRAND TOTAL ..	8	77	14	392	196	8	63	13	389	201

'RETURN SHOWING THE ACTUAL STRENGTH OF THE ARMY AND ROYAL AIR FORCE IN INDIA INCLUDING PERSIAN GULF PORTS, THE E. P. FORCE, S. PERSIA AND S. E. PERSIA AND ADEN ON THE 1ST OCTOBER 1926' [293r] (47/54)

293

Departmental and Administrative Services. 41

MEDICAL SERVICES.

Units.	*SANCTIONED ESTABLISHMENT.					*ACTUAL STRENGTH.				
	Officers with King's Commn.	British Other Ranks.	I. Os. & I. O. Rs.	Civilians.	Follow-ers.	Officers with King's Commn.	British Other Ranks.	I. Os. & I. O. Rs.	Civilians.	Follow-ers.
Officers, R. A. M. C.	292	279
Officers, I. M. S.	392	376
Officers, A.-D.-C.	18	17
Other Ranks, R. A. M. C.	..	442	433
Other Ranks, A.-D.-C.	..	36	36
in Alexandra's Military Nursing Service for India.	276	247	..
in Hospitals	45	42	..
in Subordinate Medical Department—										
Assistant Surgeons	..	371	349
Sub-Assistant Surgeons	757	761
in Hospital Corps	5,014	..	4,884	4,607	..	4,784
Privates	1,400	812
TOTAL	702	849	7,171	321	4,884	672	818	6,180	289	4,784

*Includes Aden and Persia.

'RETURN SHOWING THE ACTUAL STRENGTH OF THE ARMY AND ROYAL AIR FORCE IN INDIA INCLUDING PERSIAN GULF PORTS, THE E. P. FORCE, S. PERSIA AND S. E. PERSIA AND ADEN ON THE 1ST OCTOBER 1926' [293v] (48/54)

Departmental and Administrative Services—contd.
SUPPLY SERVICES.

Units.	SANCTIONED ESTABLISHMENT.						ACTUAL STRENGTH.							
	Officers with King's Commn.	British Other Ranks.	Indian Officers.	CIVILIANS.		Followers.	Officers with King's Commn.	British Other Ranks.	Indian Officers.	CIVILIANS.		Followers.		
				Indian Other Ranks.	Indians.					Indian Other Ranks.	Indians.			
I. A. S. C. Record Office ..	1	4	46	12	1	4	50	
” Training School ..	4	1	2	3	4	1	2	
Supply Sections ..	138	326	68	623	2,779	131	302	35	670	
Station Supply Depots ..														
Supply Depot Coy. Headquarters.														
Supply Depot Headquarters														
” Depot Sections ..														
” Workshop Sections ..														
” Tally Sections ..														
Bakery Sections ..														
Butchery Sections ..														
Govt. Stores forwarding Agency														
Station Companies (Aden) ..	2	3	23	55	2	2	20	
Leave Reserve ..	43	30	75	..	49	41	42	
TOTAL ..	(a)188	360	68	..	4	769	2,849	187	346	35	..	4	784	2,477

(a) Includes 20 departmental officers.

'RETURN SHOWING THE ACTUAL STRENGTH OF THE ARMY AND ROYAL AIR FORCE IN INDIA INCLUDING PERSIAN GULF PORTS, THE E. P. FORCE, S. PERSIA AND S. E. PERSIA AND ADEN ON THE 1ST OCTOBER 1926' [294r] (49/54)

(294)

43

Departmental and Administrative Services—contd.
REMOUNT SERVICES.

Units.	SANCTIONED ESTABLISHMENT.						ACTUAL STRENGTH.					
	Officers with King's Commn.	British Other Ranks.	Indian Officers.	Indian Other Ranks.	Civilians (Indian).	Follow-ers.	Officers with King's Commn.	British Other Ranks.	Indian Officers.	Indian Other Ranks.	Civilians (Indian).	Follow-ers.
Remount Depots and Circles ..	13	24	9	192	3,622		13	24	9	191	318	3,185
TOTAL ..	13	24	9	192	3,622		13	24	9	191	318	3,185

CANTONMENT ESTABLISHMENT.

Units.	SANCTIONED ESTABLISHMENT.						ACTUAL STRENGTH.					
	Officers with King's Commn.	British Other Ranks.	Indian Officers.	Indian Other Ranks.	Civilians (Indian).	Follow-ers.	Officers with King's Commn.	British Other Ranks.	Indian Officers.	Indian Other Ranks.	Civilians (Indian).	Follow-ers.
Cantonments Department ..	42	..	4	..	5	3	42	..	4	..	8	
TOTAL ..	(a) 42	..	4	..	5	3	42	..	4	..	8	

(a) Includes 2 Leave Reserve.

'RETURN SHOWING THE ACTUAL STRENGTH OF THE ARMY AND ROYAL AIR FORCE IN INDIA INCLUDING PERSIAN GULF PORTS, THE E. P. FORCE, S. PERSIA AND S. E. PERSIA AND ADEN ON THE 1ST OCTOBER 1926' [294v] (50/54)

Departmental and Administrative Services—contd.

VETERINARY SERVICES.

Units.	SANCTIONED ESTABLISHMENT.						ACTUAL STRENGTH.					
	Officers with King's Commn.	British Other Ranks.	Indian Officers.	Indian Other Ranks.	Civilians.	Followers.	Officers with King's Commn.	British Other Ranks.	Indian Officers.	Indian Other Ranks.	Civilians.	Followers.
Veterinary Hospitals, Remount Depot, etc.	43	5	92	639	51	88	48	5	106	613	51	87
Leave Reserve	5						
TOTAL	48	5	92	639	51	88	48	5	106	613	51	87

TRAINING ESTABLISHMENTS

Units.	SANCTIONED ESTABLISHMENT.						ACTUAL STRENGTH.					
	Officers with King's Commn.	British Other Ranks.	Indian Officers.	Indian Other Ranks.	Civilians.	Followers.	Officers with King's Commn.	British Other Ranks.	Indian Officers.	Indian Other Ranks.	Civilians.	Followers.
Staff College	(a) 39	6	..	4	9	21	(a) 39	6	..	4	9	21
Senior Officers' School ..	6	9	..	16	5	21	6	9	..	16	5	21
Equitation School	9	6	2	15	12	184	9	6	2	15	12	184
Small Arms School, Pachmachi ..	8	32	3	41	4	51	8	32	3	41	4	51
Machine Gun School	7	14	1	20	2	17	7	14	1	20	2	17
Army Signal School	5	13	2	9	8	22	5	13	2	9	8	22
Army School of P. T.	6	12	1	13	3	20	6	12	1	13	3	20
P. T. Inspectorate	4	1	..	4	1	..
School of Artillery (India) ..	7	10	1	14	2	24	7	10	1	14	2	24
Royal Tank Corps School	6	41	15	6	41	15
TOTAL	97	143	10	132	46	375	97	143	10	132	46	375

(a) Includes 29 recorded students.

'RETURN SHOWING THE ACTUAL STRENGTH OF THE ARMY AND ROYAL AIR FORCE IN INDIA INCLUDING PERSIAN GULF PORTS, THE E. P. FORCE, S. PERSIA AND S. E. PERSIA AND ADEN ON THE 1ST OCTOBER 1926' [295r] (51/54)

Departmental and Administrative Services—contd. 45 295

MASTER GENERAL OF SUPPLY.
(Indian Ordnance Department.)

Units.	SANCTIONED ESTABLISHMENT.					*ACTUAL STRENGTH.				
	Officers with King's Commission.	British Other Ranks.	Indian Other Ranks.	Civilians.		Officers with King's Commission.	British Other Ranks.	Indian Other Ranks.	Civilians.	
				Gazetted.	Non-Gazetted.				Gazetted.	Non-Gazetted.
Ordnance Factories	11	1	..	40	712	14	28	1	39	638
Clothing Factories	2	5	84	5	17	..	2	130
Ordnance Inspection Section Establishments and C. I. S. C., C. C. M. As., and A. E. S. As. and I. C. S. Shah Establishments.	13	35	36	6	102	12	42	32	5	92
TOTAL	26	36	36	51	898	31	87	33	46	860

MILITARY FARMS DEPARTMENT (GRASS).

Units.	SANCTIONED ESTABLISHMENT.			ACTUAL STRENGTH.		
	Officers with King's Commission.	Managers, Assistant Managers, Overseers, asst. Overseers and British students.	Indian Establishment.	Officers with King's Commission.	Managers, Assistant Managers, Overseers, Asst. Overseers and British students.	Indian Establishment.
Military Grass Farms	17	54	255	17	50	253
TOTAL	17	54	255	17	50	253

DAIRY FARMS.

Units.	SANCTIONED ESTABLISHMENT.			ACTUAL STRENGTH.		
	Officers with King's Commission.	Managers, and Engineers.	Indian Establishment.	Officers with King's Commission.	Managers, and Engineers.	Indian Establishment.
Dairy Farms	3	27	302	3	27	281
TOTAL	3	27	302	3	27	281

* Figures for 1st September 1926.

'RETURN SHOWING THE ACTUAL STRENGTH OF THE ARMY AND ROYAL AIR FORCE IN INDIA INCLUDING PERSIAN GULF PORTS, THE E. P. FORCE, S. PERSIA AND S. E. PERSIA AND ADEN ON THE 1ST OCTOBER 1926' [295v] (52/54)

Departmental and Administrative Services—contd.
INDIAN ARMY ORDNANCE CORPS IN INDIA AND ADEN.

	SANCTIONED ESTABLISHMENT.				*ACTUAL STRENGTH.					
	Officers with King's Commission.	BRITISH OTHER RANKS.		Indian Officers.	Indian Other Ranks.	Officers with King's Commission.	BRITISH OTHER RANKS.			
		I. A. O. C.	R. A. O. C.				I. A. O. C.	R. A. O. C.		
Office of Director of Equipment and Ordnance Stores.	11	52	11	52		
Office of the Deputy Director of Ordnance Services, Northern Command.	2	2	2	3		
Office of the Deputy Director of Ordnance Services, Southern Command.	1	2	1	2		
Office of the Deputy Assistant Directors of Ordnance Services, all Districts.	11	11	10	12		
Ordnance Mechanical Engineers ..	8	9		
Rawalpindi Arsenal	10	66	8	1	286	7	67	7	1	
Ferozepore Arsenal	8	71	7	1	259	8	66	7	1	
Quetta Arsenal	4	36	4	1	173	5	31	5	1	
Kirkee Arsenal	8	50	7	1	203	6	49	8	1	
Allahabad Arsenal	8	52	7	1	119	6	49	8	1	
Madras Arsenal	4	28	3	1	149	5	27	3	1	
Rangoon Arsenal	4	17	3	..	89	4	17	3	..	
Fort William Ordnance Depot ..	3	17	75	3	18	3	..	
Karachi Depot	2	10	38	1	10	
Bombay Depot	2	9	18	2	8	
Agra Depot	2	10	45	1	10	
Lahore Depot	2	18	20	2	19	
Clothing Depot, Rawalpindi ..	2	7	2	7	
" " Quetta	1	5	18	1	5	
" " Madras	3	25	2	3	
" " Shahjahanpore ..	4	9	39	4	9	
Ordnance Depot, Cawnpore: ..	1	7	2	9	
Chitral	1	1	
I. A. O. C. School, Kirkee ..	2	2	2	2	2	
Leave	21	45	26	51	
TOTAL ..	(a)121	530	39	6	1,643	(a)122	527	44	6	1,574

(a) Includes Departmental officers.
* Figures for 1st September 1926.

'RETURN SHOWING THE ACTUAL STRENGTH OF THE ARMY AND ROYAL AIR FORCE IN INDIA INCLUDING PERSIAN GULF PORTS, THE E. P. FORCE, S. PERSIA AND S. E. PERSIA AND ADEN ON THE 1ST OCTOBER 1926' [296r] (53/54)

296
47

Departmental and Administrative Services—contd.
EMBARKATION AND RAILWAY TRANSPORT STAFF.

	SANCTIONED ESTABLISHMENT.						ACTUAL STRENGTH.					
	Officers with King's Commission.	British Other Ranks.	Indian Officers.	Indian Other Ranks.	Civilians.	Followers.	Officers with King's Commission.	British Other Ranks.	Indian Officers.	Indian Other Ranks.	Civilians.	Followers.
Embarkation Staff ..	8	21	2	16	42	37	9	30	1	16	39	36
Railway Transport Staff..	1	8	..	2	2	2						
TOTAL ..	9	29	2	16	44	39	9	30	1	16	39	36

MILITARY ENGINEER SERVICES.

Units.	SANCTIONED ESTABLISHMENT.						ACTUAL STRENGTH.					
	Officers with King's Commission.	British Other Ranks.	Indian Officers.	Indian Other Ranks.	Civilians.	Followers.	Officers with King's Commission.	British Other Ranks.	Indian Officers.	Indian Other Ranks.	Civilians.	Followers.
Military Engineer Services	206	226	918	500	202	245	835	413
TOTAL ..	206	226	918	500	202	245	835	413

ARMY EDUCATIONAL SERVICES.

Units.	SANCTIONED ESTABLISHMENT.						ACTUAL STRENGTH.					
	Officers with King's Commission.	British Other Ranks.	Indian Officers.	Indian Other Ranks.	Civilians.	Followers.	Officers with King's Commission.	British Other Ranks.	Indian Officers.	Indian Other Ranks.	Civilians.	Followers.
Army Headquarters	2	1	2	1
Commandants ..	4	8	4	4	8	4
Districts ..	11	14	11	14
Regtl. & Dett. Schools— British Troops ..	31	123	150	..	29	122	130	..
Indian Troops	20	20	..
Army School of Education, India. Lawrence School ..	14	2	16	5	19	87	14	2	16	5	19	87
Prince of Wales' Royal Indian Military College.	..	16	42	152	..	11	46	152
Prince of Wales' Royal Indian Military College.	2	2	1	..	23	51	2	1	1	..	22	40
King George's Schools	3	..	16	6	8	61	3	..	16	6	7	59
Board of Examiners ..	1	3	2	1	3	4
Aden ..	1	2	3	1	1	2	2	1
TOTAL ..	67	167	37	11	270	355	65	160	37	11	251	353

'RETURN SHOWING THE ACTUAL STRENGTH OF THE ARMY AND ROYAL AIR FORCE IN INDIA INCLUDING PERSIAN GULF PORTS, THE E. P. FORCE, S. PERSIA AND S. E. PERSIA AND ADEN ON THE 1ST OCTOBER 1926' [296v] (54/54)

Departmental and Administrative Services—concl'd.
ARMY HEADQUARTERS, COMMANDS, DISTRICTS AND BRIGADES, ETC.

Units.	SANCTIONED ESTABLISHMENT.						ACTUAL STRENGTH.					
	Officers with King's Commission.	British Other Ranks.	Indian Officers.	Indian Other Ranks.	Civilians.	Followers.	Officers with King's Commission.	British Other Ranks.	Indian Officers.	Indian Other Ranks.	Civilians.	Followers.
Officers of the General and Administrative Staffs of Army Headquarters, Commands, Districts, Brigades, etc. (excluding Officers of Medical and Indian Army Ordnance Services).	*457	*457
Do. Aden ..	4	4
TOTAL ..	461	461
Clerical and Menial Establishment of Army Headquarters—												
Military Secretary's Branch	31	25	..	1	33	25
General Staff Branch	107	77	..	22	1	..	181	122
Adjutant General's Branch	173	107	..	20	151	107
Quartermaster General's Branch	253	100	..	73	180	100
Engineer-in-Chief's Branch	56	21	56	23
A. M. S. (P) to H. E. the C-in-Chief.	6	3	..	2	4	3
M. G. S. Branch	152	62	..	11	141	62
TOTAL	(a) 778	395	..	(a) 129	1	..	646	392

(a) Includes Departmental Officers, Warrant Officers and British Other Ranks.
* Includes Permanent Staff of Auxiliary and Territorial Force.
† Excludes absentees.

HC42FA-111-10-11-26-GIPS