

This PDF was generated on 12/05/2023 from online resources of
the **Qatar Digital Library**

The online record can be viewed at:

http://www.qdl.qa/en/archive/81055/vdc_100000001435.0x00030c

It contains extra information, high resolution zoomable views and transcriptions.

**‘RETURN SHOWING THE ACTUAL STRENGTH OF THE ARMY AND ROYAL
AIR FORCE IN INDIA INCLUDING PERSIAN GULF PORTS, THE E. P. FORCE,
S. PERSIA AND S. E. PERSIA AND ADEN ON THE 1 June 1924’**

Holding Institution	British Library: India Office Records and Private Papers
Reference	IOR/L/MIL/17/5/1295
Date(s)	1 Jun 1924 (CE, Gregorian)
Written in	English in Latin
Extent and Format	1 file (35 folios)
Copyright for document	Open Government Licence



About this record

This file contains strength returns from units of the Indian Army, the British Army, and the Royal Air Force in British India, as well as forces deployed in Persia [Iran] (covering South Persia, Southeast Persia, and the E[ast] P[ersia] Force), the Persian Gulf ports, and Aden, issued by the Adjutant-General in India.

The strength returns detail the number of personnel serving with military branches and individual units as of 1 June 1924, grouped under the following categories:

- ‘Combatant Services – Regular Forces’
- ‘Auxiliary Force – India’
- ‘Military Police and Levies’
- ‘Imperial Service Troops’
- ‘Miscellaneous Units’

- 'Departmental and Administrative Services'.

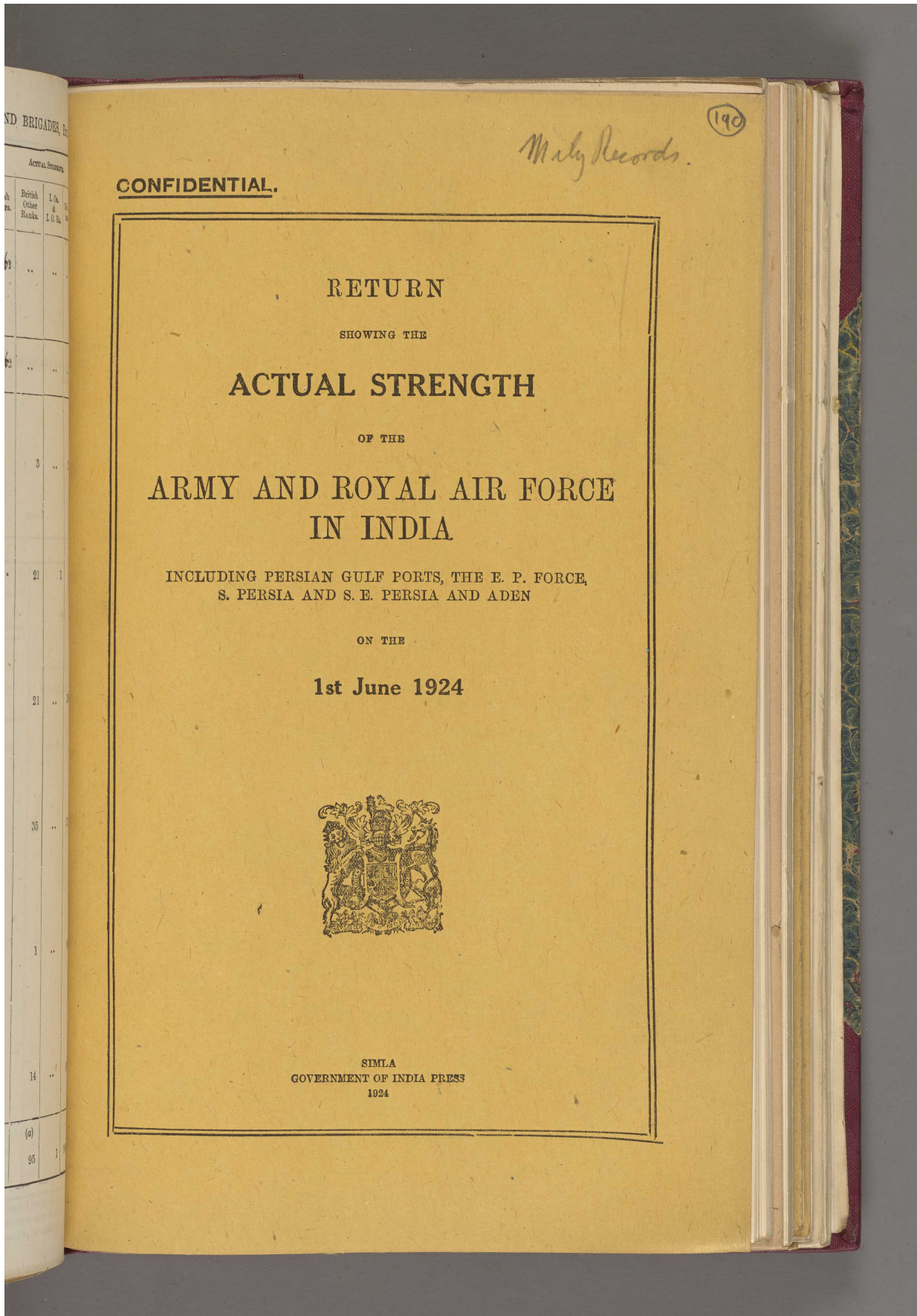
The returns are further divided into sub-categories such as: sanctioned and actual strength; British and Indian officers, other ranks, and followers; 'Class I' and 'Class II' or 'Class A' and 'Class B' personnel; 'Active', 'Reserve', and 'Cadet' personnel; and 'Mounted' and 'Foot' personnel.

Some returns contain footnotes with additional details about specific units.

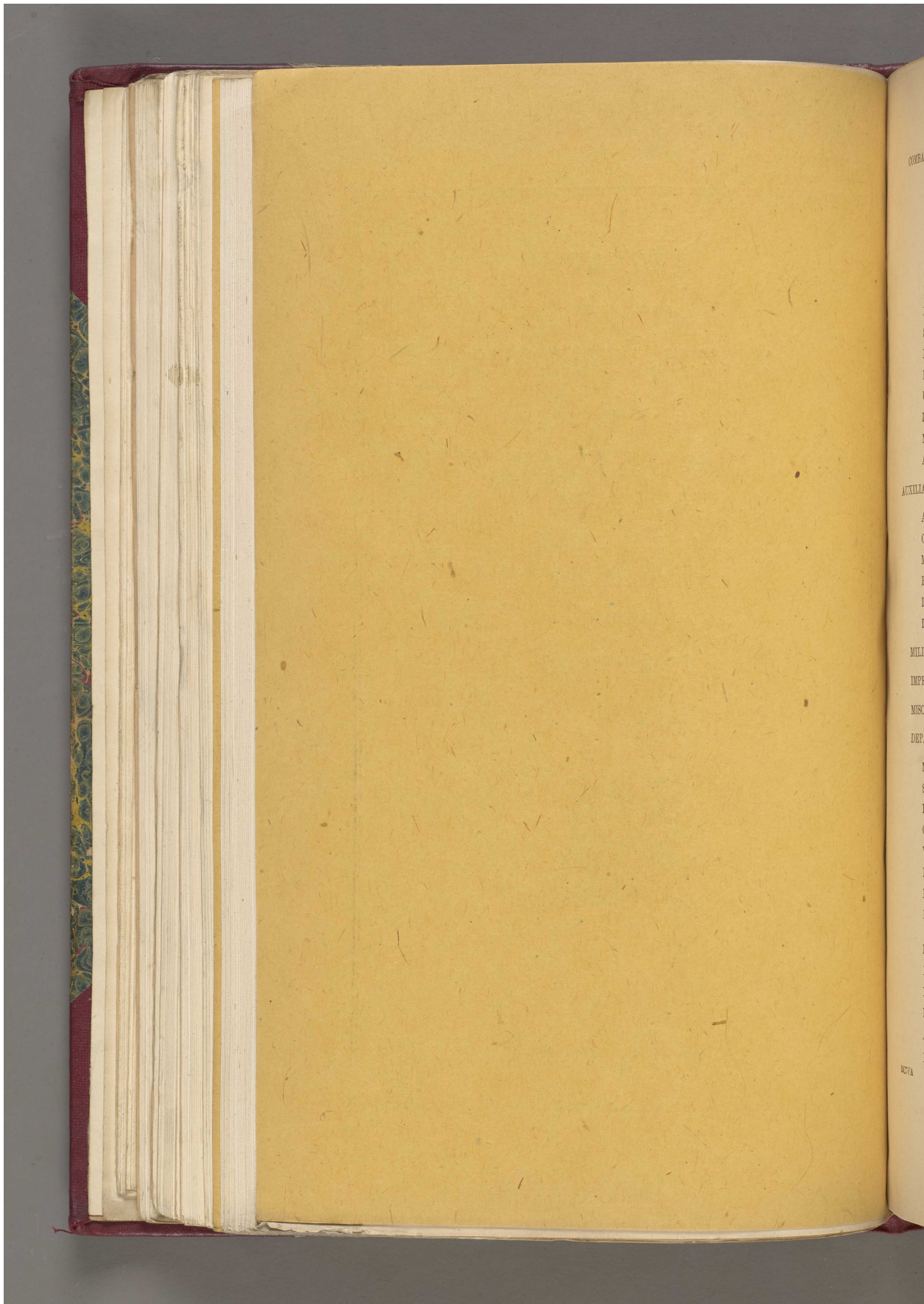
The file was printed in Simla [Shimla] and is marked 'GOVERNMENT OF INDIA PRESS 1924'.

The file is bound in a volume with shelfmarks IOR/L/MIL/17/5/1290-1294 and 1296-1301.

'RETURN SHOWING THE ACTUAL STRENGTH OF THE ARMY AND ROYAL AIR FORCE IN INDIA INCLUDING PERSIAN GULF PORTS, THE E. P. FORCE, S. PERSIA AND S. E. PERSIA AND ADEN ON THE 1 June 1924' [190r] (1/70)



'RETURN SHOWING THE ACTUAL STRENGTH OF THE ARMY AND ROYAL AIR FORCE IN INDIA INCLUDING PERSIAN GULF PORTS, THE E. P. FORCE, S. PERSIA AND S. E. PERSIA AND ADEN ON THE 1 June 1924' [190v] (2/70)



'RETURN SHOWING THE ACTUAL STRENGTH OF THE ARMY AND ROYAL AIR FORCE IN INDIA INCLUDING PERSIAN GULF PORTS, THE E. P. FORCE, S. PERSIA AND S. E. PERSIA AND ADEN ON THE 1 June 1924' [191r] (3/70)

191

SUMMARY OF STRENGTH.

COMBATANT SERVICES—REGULAR FORCES.

ROYAL AIR FORCE	1
BRITISH CAVALRY	2
ROYAL ARTILLERY	3 to 7
BRITISH INFANTRY	8 and 9
TANK CORPS	10
INDIAN CAVALRY	11
ENGINEERS	12
SIGNALS	12
INDIAN INFANTRY	13 to 18
PIONEER BATTALIONS	19
UNITS SERVING IN PERSIA AND ADEN	20
INDIAN ARMY RESERVE	23 to 32
MECHANICAL TRANSPORT UNITS	33
ANIMAL TRANSPORT UNITS	34

AUXILIARY FORCE—INDIA.

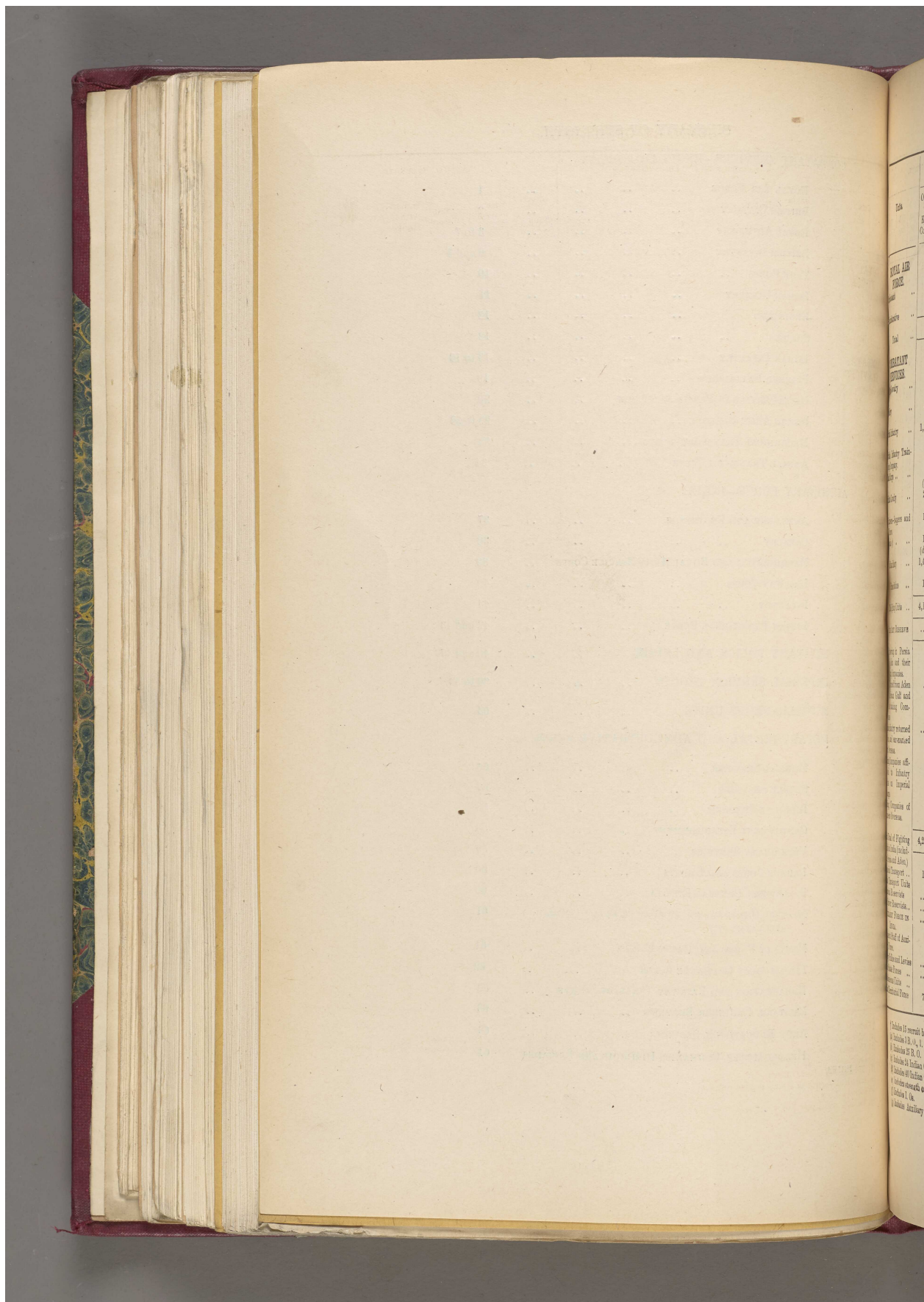
ARTILLERY AND ENGINEERS	37
CAVALRY	38
MACHINE GUN AND ROYAL ARMY SERVICE CORPS	39
RAILWAY CORPS	40
INFANTRY	41
INDIAN TERRITORIAL FORCE	42 and 43
MILITARY POLICE AND LEVIES	46 and 47
IMPERIAL SERVICE TROOPS	50 to 52
MISCELLANEOUS UNITS	53

DEPARTMENTAL AND ADMINISTRATIVE SERVICES—

MEDICAL SERVICES	56
SUPPLY SERVICES	57
REMOUNT SERVICES	58
CANTONMENT ESTABLISHMENT	58
VETERINARY SERVICES	59
LABOUR CORPS AND DEPOTS	60
FOLLOWERS' CENTRAL DEPOTS	60
MASTER GENERAL OF SUPPLY (INDIAN ORDNANCE DEPARTMENT.)	61
MILITARY FARMS AND DAIRY FARMS	61
INDIAN ARMY ORDNANCE CORPS	62
EMBARKATION AND RAILWAY TRANSPORT STAFF	63
MILITARY ENGINEER SERVICES	63
ARMY EDUCATIONAL SERVICES	63
HEADQUARTERS, COMMANDS, DISTRICTS AND BRIGADES	64

MCTFA

'RETURN SHOWING THE ACTUAL STRENGTH OF THE ARMY AND ROYAL AIR FORCE IN INDIA INCLUDING PERSIAN GULF PORTS, THE E. P. FORCE, S. PERSIA AND S. E. PERSIA AND ADEN ON THE 1 June 1924' [191v] (4/70)



'RETURN SHOWING THE ACTUAL STRENGTH OF THE ARMY AND ROYAL AIR FORCE IN INDIA INCLUDING PERSIAN GULF PORTS, THE E. P. FORCE, S. PERSIA AND S. E. PERSIA AND ADEN ON THE 1 June 1924' [192r] (5/70)

SUMMARY OF STRENGTH.

192

Units.	SANCTIONED ESTABLISHMENT.						ACTUAL STRENGTH.					
	Officers with King's Commn.	British Other Ranks.	Indian Officers.	Indian Other Ranks.	Civilians.	Fol-lowers.	Officers with King's Commn.	British Other Ranks.	Indian Officers.	Indian Other Ranks.	Civilians.	Fol-lowers.
ROYAL AIR FORCE.												
Combatant ..	214	1,729	78	970	199	1,692	71	936
Administrative ..	11	22	10	22
Total ..	225	1,751	78	970	210	1,714	71	936
COMBATANT SERVICES.												
British Cavalry ..	162	3,432	1,608	142	3,469	1,470
Artillery ..	570	9,845	201	11,792	..	5,069	554	9,742	197	11,422	..	4,134
British Infantry ..	1,260	39,735	45	1,845	..	3,285	1,226	39,240	47	1,702	..	2,913
British Infantry Training Company.	1	..	2	145	..	8	1	..	2	203	..	7
Tank Corps ..	81	909	261	65	902	172
Indian Cavalry ..	294	..	378	10,584	..	4,326	289	..	372	10,502	..	4,307
Engineers—Sappers and Miners.	104	216	152	7,458	..	628	106	198	152	7,325	..	683
Signals (e) ..	153	2,217	58	3,222	..	763	130	1,928	56	3,015	..	655
Indian Infantry ..	1,400	..	2,282	190,798	..	5,700	1,462	..	2,229	88,723	..	5,546
Pioneer Battalions ..	135	..	177	7,949	..	423	135	..	173	7,726	..	413
Total Fighting Units ..	4,160	56,354	3,295	133,793	..	22,071	4,110	55,479	3,228	1,31,618	..	20,209
INDIAN ARMY RESERVE												
Units serving in Persia and Aden and their training Companies.	81	1,145	68	2,461	..	363	73	1,301	50	1,892	..	251
Units returned from Aden and Persian Gulf and their training Companies.
Indian Infantry returned from, and earmarked for, Overseas.
Training Companies affiliated to Infantry Units on Imperial charge.	4	..	8	592	..	32	5	..	8	703	..	37
Training Companies of Pioneers Overseas.	1	..	2	141	..	8	1	..	2	92	..	9
Grand Total of Fighting Units in India (including Persia and Aden.)	4,246	57,499	3,373	1,69,233	..	22,474	4,189	56,780	3,288	1,50,637	..	20,506
Mechanical Transport ..	142	549	..	1,851	310	2,347	143	542	..	1,914	323	2,125
Animal Transport Units ..	96	92	..	15,391	147	2,186	96	50	..	16,246	13	2,034
Mechanical Reservists	688	..	152
Male Driver Reservists	1,000	319
AUXILIARY FORCE IN INDIA.	..	(g)36,760	(g)33,095
Permanent Staff of Auxiliary Force.	58	359	58	350
Military Police and Levies	24,817
Indian State Forces	37,542	28,703
Miscellaneous Units ..	8	84	12	394	..	201	8	71	13	387	..	199
Indian Territorial Force	734	46	..	18,340	361	41	..	14,641

† Includes 15 recruit boys per Gurkha Battalion.
 (a) Includes 3 B. O., 1. B. O. Rs., 5 I. O., 276 I. O. Rs and 28 Followers debitable to Imperial Government.
 (b) Excludes 25 B. O. Rs. of Cavalry, Artillery and Infantry attached to Signals but borne on the strength of their units.
 (c) Includes 24 Indian Officers.
 (d) Includes 49 Indian Officers.
 (e) Includes strength of Army Signal Schools.
 (f) Includes 1 Oa.
 (g) Includes Auxiliary Force Officers.

'RETURN SHOWING THE ACTUAL STRENGTH OF THE ARMY AND ROYAL AIR FORCE IN INDIA INCLUDING PERSIAN GULF PORTS, THE E. P. FORCE, S. PERSIA AND S. E. PERSIA AND ADEN ON THE 1 June 1924' [192v] (6/70)

ii

SUMMARY OF STRENGTH—contd.

Units.	SANCTIONED ESTABLISHMENT.						ACTUAL STRENGTH.					
	Officers with King's Commn.	British Other Ranks.	Indian Officers.	I. Os. & Indian Other Ranks.	Civilians.	Fol-lowers.	Officers with King's Commn.	British Other Ranks.	Indian Officers.	I. Os. & Indian Other Ranks.	Civilians.	Fol-lowers.
DEPARTMENTAL AND ADMINISTRATIVE SERVICES.												
Medical Services ..	(a) 809	829	..	12,244	276	..	791	888	..	12,039	265	..
Supply Services ..	193	369	..	70	808	3,003	195	346	..	42	809	2,400
Remount Services ..	12	27	..	204	..	3,583	12	26	..	204	..	5,571
Cantonment Dept. ..	42	4	4	..	40	4	4	..
Veterinary Services ..	52	8	..	738	40	88	47	7	..	716	42	70
Labour Corps and Depots.	2	215	7	..
Followers, Central Depots.	2	12	..	19	2	11
Master General of Supply (Indian Ordnance Department).	28	20	..	28	1,036	..	36	64	..	28	794	..
Military Grass Farms ..	17	347	..	17	332	..
Dairy Farms ..	3	309	..	3	269	..
Indian Army Ordnance Corps.	130	581	..	1,764	127	581	..	1,544
Embarkation and Railway Staff.	5	20	..	16	23	33	5	20	..	16	23	..
Military Engineer Services.	235	257	787	497	170	212	..	2	1,859	1,130
Army Educational Services.	67	166	..	558	570	..	62	163	..	519	406	..
Officers of the General and Administrative Staffs of Army Headquarters Commands, Districts and Brigades, etc.	446	447
Clerical and Menial Establishments of Army Headquarters.	(b) 370	373	..	(b) 91	1	..	578	..
Total ..	2,041	2,277	..	15,638	4,880	7,896	1,956	2,398	1	15,740	5,418	..
Grand Total of Army in India (including Persian Gulf Ports, Persia and Aden), excluding Royal Air Force.	7,325	97,600	3,385	2,60,077	5,337	35,256	6,811	93,367	3,302	2,53,309	5,880	..

(a) Includes Dental Surgeons.

(b) Includes Departmental Officers, Warrant Officers and British Other Ranks.

'RETURN SHOWING THE ACTUAL STRENGTH OF THE ARMY AND ROYAL AIR FORCE IN INDIA INCLUDING PERSIAN GULF PORTS, THE E. P. FORCE, S. PERSIA AND S. E. PERSIA AND ADEN ON THE 1 June 1924' [193r] (7/70)

ROYAL AIR FORCE. 193

ACTUAL STRENGTH.	Units.	SANCTIONED ESTABLISHMENT.				ACTUAL STRENGTH.					
		Officers with King's Commission.	British Other Ranks.	Indian officers and Indian other ranks.	Civilian clerks (British and Indian).	Fol-lowers (includ-ing arti-ficers.)	Officers with King's Com-mission.	British Other Ranks.	Indian officers and Indian other ranks.	Civilian clerks, British and Indian.	Fol-lowers (includ-ing arti-ficers).
ROYAL AIR FORCE.											
Combatants.											
12,000	Headquarters, R. A. F.	15	26	..	30	27	18	22	..	30	27
43	Aircraft Park	9	127	..	9	111	9	148	..	9	116
206	Aircraft Depot (including wastage)	41	766	..	12	322	30	607	..	12	320
4	Headquarters, No. 1 Wing	6	14	..	3	6	6	14	..	3	6
..	" No. 2 Wing	5	14	..	3	6	5	11	..	3	5
719	" No. 3 Wing	4	14	..	3	6	4	13	..	3	5
215	Staff College (a)	2
11	No. 20 (A. C.) Squadron	22	129	..	4	79	22	132	..	2	71
20	No. 5 (A. C.) Squadron	22	129	..	4	79	22	149	..	2	67
22	No. 27 (Bombing) Squadron	22	126	..	2	79	19	136	..	2	69
33	No. 28 (A. C.) Squadron	22	129	..	4	79	23	127	..	2	75
1,641	No. 31 (A. C.) Squadron	22	129	..	2	79	21	192	..	2	79
16	No. 60 (Bombing) Squadron	22	126	..	1	72	20	141	..	1	75
10	R. A. F. Hill Depot (b)	1	25	21
2,139	Total	214	1,729	..	78	970	199	1,692	..	71	936
ADMINISTRATIVE, R. A. F.											
..	Medical Services
..	Headquarters, R. A. F.	2	1	2	1
..	Aircraft Depot	2	7	2	4
1	Aircraft Park	1	2	1	3
..	No. 5 Squadron	1	2	1	3
1,15,740	No. 20 Squadron	1	2	1	2
..	No. 27 Squadron	1	2	1	2
..	No. 28 Squadron	1	2	1	4
3,202	No. 31 Squadron	1	2	1	2
2,32,200	No. 60 Squadron	1	2	1	1
..	Total	11	22	11	22
..	GRAND TOTAL	225	1,751	..	78	970	210	1,714	..	71	936

(a) Paid out of R.A.F. Budget.
(b) For 6 Summer months only.

HCTFA 1

'RETURN SHOWING THE ACTUAL STRENGTH OF THE ARMY AND ROYAL AIR FORCE IN INDIA INCLUDING PERSIAN GULF PORTS, THE E. P. FORCE, S. PERSIA AND S. E. PERSIA AND ADEN ON THE 1 June 1924' [193v] (8/70)

2 BRITISH CAVALRY.

Units.	SANCTIONED ESTABLISHMENT.				ACTUAL STRENGTH.		
	Officers with King's Commission.	Other ranks.		Fol-lowers.	Officers with King's Commission.	Other ranks.	
		British.	Indian.			British.	Indian.
BRITISH CAVALRY.							
The Queen's Bays (2nd Dragoon Guards)	24	562	..
4-7th " "	23	591	..
The Royal Scots Greys ..	162	3,432	..	1,608	24	572	..
4th Hussars ..	for 6 Cavalry Regiments at			..	23	599	..
5th-6th Dragoons	22	561	..
11th Hussars P. A. O. ..	27	* 572	..	268	26	564	..
	per Regiment		
TOTAL ..	162	(a)3,432	..	(a)1,608	142	3,469	..

(a) Revised peace establishments, Vide A. I. (I.) No. 396 of 1923.
* Includes 1 Armourer (R. A. O. C.) attached.

'RETURN SHOWING THE ACTUAL STRENGTH OF THE ARMY AND ROYAL AIR FORCE IN INDIA INCLUDING PERSIAN GULF PORTS, THE E. P. FORCE, S. PERSIA AND S. E. PERSIA AND ADEN ON THE 1 June 1924' [194v] (10/70)

4

ROYAL ARTILLERY—*contd.*

Units.	SANCTIONED ESTABLISHMENT.					ACTUAL STRENGTH.				Remarks.
	Officers with King's Commn.	British Other Ranks.	Indian Officers.	Indian Other Ranks.	Followers.	Officers with King's Commn.	British Other Ranks.	Indian Officers.	Indian Other Ranks.	
Brought forward ..	81	1,888	12	589	790	77	1,857	12	583	
Royal Field Artillery—<i>contd.</i>										
16th (late 32nd) Brigade Headquarters										
27th Battery	27	656	4	223	278	26	647	4	228	
34th (late 134th) Battery										
72nd (late 135th) "										
86th "										
20th Brigade Headquarters										
41st (late 133rd) Battery										
45th (late 145th) "	14	310	4	139	196	14	322	4	142	
67th Battery										
99th "										
21st Brigade Headquarters										
" P " Battery										
" Z " "	27	656	4	223	278	27	646	4	219	
" Y " "										
" C " "										
22nd (late 26th) Brigade Headquarters										
32nd (late 16th) Battery	27	576	4	143	234	26	569	4	148	
33rd (late 117th) "										
36th (late 118th) "										
55th (late 141st) "										
23rd Brigade Headquarters										
60th (late 107th) Battery										
89th (late 108th) "	27	656	4	223	278	27	649	4	219	
90th (late 109th) "										
100th Battery										
24th (late 29th) Brigade Headquarters										
22nd (late 115th) Battery										
50th (late 116th) "	27	576	4	143	234	24	580	4	143	
56th (late 128th) "										
70th (late 127th) "										
Carried over ..	230	5,313	36	1,683	2,288	221	5,270	36	1,673	

'RETURN SHOWING THE ACTUAL STRENGTH OF THE ARMY AND ROYAL AIR FORCE IN INDIA INCLUDING PERSIAN GULF PORTS, THE E. P. FORCE, S. PERSIA AND S. E. PERSIA AND ADEN ON THE 1 June 1924' [195r] (11/70)

195

ROYAL ARTILLERY—*contd.* 5

Units.	SANCTIONED ESTABLISHMENT.					ACTUAL STRENGTH.				
	Officers with King's Comm.	British Other Ranks.	Indian Officers.	Indian Other Ranks.	Followers.	Officers with King's Comm.	British Other Ranks.	Indian Officers.	Indian Other Ranks.	Followers.
Brought forward	230	5,318	36	1,683	2,288	221	5,270	36	1,678	1,837
Royal Field Artillery—<i>concl.</i>										
26th (late 25th) Brigade Headquarters	27	656	4	223	278	27	650	4	214	274
15th (late 113th) Battery										
40th "										
48th (late 114th) "										
71st (late 115th) "	30	702	6	386	362	29	695	6	379	219
27th Brigade Headquarters										
21st Battery										
24th (late 120th) Battery										
37th Battery	7	50	4	329	159	7	51	3	305	28
47th (late 121st) Battery										
27th Brigade Ammunition Column ..										
1st Indian Divisional Ammunition Column.										
2nd Indian Divisional Ammunition Column.	7	50	4	329	159	7	49	5	326	156
TOTAL	301	6,776	54	2,950	3,246	291	6,715	54	2,902	2,514
Royal Garrison Artillery.										
Pack Artillery.										
20th Indian Pack Artillery Brigade ..	20	122	15	996	109	19	129	14	969	102
10th Pack Battery, R. G. A. ..										
109th (Murree) Pack Battery										
112th (Poonch) "										
113th (Maymyo) "	20	123	15	935	109	23	121	14	976	106
21st Indian Pack Artillery Brigade ..										
12th Pack Battery, R. G. A. ..										
101st Royal (Kohat) Pack Battery ..										
106th (Jacob's) "	40	245	30	1,991	218	42	250	28	1,945	208
114th (Rajputana) Pack Battery ..										
Carried over	40	245	30	1,991	218	42	250	28	1,945	208

HG14FA

'RETURN SHOWING THE ACTUAL STRENGTH OF THE ARMY AND ROYAL AIR FORCE IN INDIA INCLUDING PERSIAN GULF PORTS, THE E. P. FORCE, S. PERSIA AND S. E. PERSIA AND ADEN ON THE 1 June 1924' [195v] (12/70)

6 ROYAL ARTILLERY—*contd.*

Units.	SANCTIONED ESTABLISHMENT.					ACTUAL STRENGTH.				
	Officers with King's Comm.	British Other Ranks.	Indian Officers.	Indian Other Ranks.	Followers.	Officers with King's Comm.	British Other Ranks.	Indian Officers.	Indian Other Ranks.	Followers.
Brought forward	40	245	30	1,991	218	42	250	28	1,945	208
Pack Artillery—<i>contd.</i>										
22nd Indian Pack Artillery Brigade ..										
8th Pack Battery, R. G. A. ..										
102nd (Derajat) Pack Battery (F. F.) ..	20	122	15	996	109	20	116	15	947	118
104th (Hazara) " " (F. F.) ..										
110th (Abbottabad) Pack Battery ..										
23rd Indian Pack Artillery Brigade ..										
17th Pack Battery, R. G. A. ..										
103rd (Peshawar) Pack Battery ..	20	123	15	995	109	19	115	15	967	148
108th (Lahore) " " ..										
116th (Zhob) " " ..										
24th Indian Artillery Brigade ..										
11th Pack Battery, R. G. A. ..										
105th (Bombay) Pack Battery ..	20	122	15	998	109	19	116	15	948	118
118th (Sohan) " " ..										
121st (Nowshera) " " ..										
25th Indian Pack Artillery Brigade ..										
6th Pack Battery, R. G. A. ..										
107th (Bengal) Pack Battery ..	20	123	15	995	109	21	120	14	956	118
115th (Jhelum) " " ..										
120th (Ambala) Pack Battery (a) ..										
Chitral Pack Artillery Section ..	2	..	2	126	12	2	..	2	127	12
111th (Dehra Dun) Pack Battery ..	4	1	4	251	25	3	1	3	224	24
TOTAL PACK ARTILLERY ..	126	736	96	6,350	691	126	718	92	6,113	698

(a) Returned from Iraq.

'RETURN SHOWING THE ACTUAL STRENGTH OF THE ARMY AND ROYAL AIR FORCE IN INDIA INCLUDING PERSIAN GULF PORTS, THE E. P. FORCE, S. PERSIA AND S. E. PERSIA AND ADEN ON THE 1 June 1924' [196r] (13/70)

196

ROYAL ARTILLERY—*concl.* 7

Units.	SANCTIONED ESTABLISHMENT.					ACTUAL STRENGTH.				
	Officers with King's Comm.	British Other Ranks.	Indian Officers.	Indian Other Ranks.	Fol- e-ws.	Officers with King's Comm.	British Other Ranks.	Indian Officers.	Indian Other Ranks.	Fol- lowers.
Medium Artillery.										
2nd Brigade Headquarters	27	518	2	117	129	26	105	2	118	123
4th Brigade Headquarters	27	518	2	117	129	26	504	2	116	116
8th Battery	6	125	13	6	123	13
Total Medium Artillery	60	1,161	4	234	271	58	1,137	4	234	252
Coast Artillery.										
Headquarters, R. G. A. Companies ..	4	12	2	9
No. 51 Company	5	102	6	5	93	2
No. 70	5	102	6	5	104	2
No. 101	5	102	6	5	102	2
Total R. G. A. Companies	19	318	18	17	308	6
Indian Coast Artillery	3	..	3	286	15	3	..	3	283	14
Frontier Garrison Artillery	8	..	14	330	49	7	..	14	337	47
Fort Armaments	20	152	..	20	150
Depots and Training Centres.										
R. A. Training Centre, Deesa	11	14	11	486	81	11	14	11	468	77
P. A. Training Centre, Lucknow ..	11	9	11	708	65	10	9	11	650	54
R. A. Boys Depot	51	50	2
TOTAL	22	74	22	1,194	146	21	73	22	1,118	133
Totals, Artillery.										
R. H. A.	31	760	8	448	481	31	771	8	435	353
R. F. A.	331	6,776	54	2,950	3,246	291	6,715	54	2,902	2,514
Pack and F. G. A.	134	736	110	6,680	740	133	718	106	6,450	712
R. G. A.	82	1,499	7	520	456	78	1,465	7	517	422
Depots and Training Centres	22	74	22	1,194	146	21	73	22	1,118	133
GRAND TOTAL, ROYAL ARTILLERY ..	(a) 570	(a) 9,845	(a) 201	(a) 11,792	(a) 5,069	(b) 554	(b) 9,742	(b) 197	(b) 11,422	(b) 4,134

(a) Revised peace establishments, *vide* A. I. (I.) No. 853 of 1923.
(b) include 3 P. O., B. I. O. R., 5 I. O., 276 I. O. B. and 28 Followers chargeable to the Imperial Government.

'RETURN SHOWING THE ACTUAL STRENGTH OF THE ARMY AND ROYAL AIR FORCE IN INDIA INCLUDING PERSIAN GULF PORTS, THE E. P. FORCE, S. PERSIA AND S. E. PERSIA AND ADEN ON THE 1 June 1924' [196v] (14/70)

8 BRITISH INFANTRY.

Units.	SANCTIONED ESTABLISHMENT.					ACTUAL STRENGTH.				
	Officers with King's Comn.	British Other Ranks.	Indian Officers.	Indian Other Ranks.	Follow-ers.	Officers with King's Comn.	British Other Ranks.	Indian Officers.	Indian Other Ranks.	Follow-ers.
1st Bn., The Royal Scots ..						27	884	1	36	
2nd Bn., The Queen's Royal Regiment.						27	896	1	39	
2nd Bn., The K. O. Royal Regiment (Lancasters).						28	875	1	37	
2nd Bn., The Northumberland Fusiliers.						26	861	1	39	
2nd Bn., The Royal Warwickshire Regiment.						29	848	1	41	
1st Bn., The Royal Fusiliers ..						29	867	1	37	
2nd Bn., The King's Regiment (Liverpool).						29	880	1	42	
2nd Bn., The Lincolnshire Regiment.						25	882	1	37	
2nd Bn., The Devonshire Regiment						28	867	1	35	
2nd Bn., The Royal Ulster Rifles..						27	865	2	39	
2nd Bn., The Somerset Light Infantry (P. A.).						29	879	1	40	
1st Bn., The West Yorkshire Regiment.	28	*883	1	41	73	23	827	1	41	
		for each Battalion								
		Total for 45 Battalions								
2nd Bn., The Bedfordshire and Hertfordshire Regiment.	1,260	39,735	45	1,845	3,285	27	863	1	32	
1st Bn., The Green Howards ..						29	870	1	26	
2nd Bn., The Lancashire Fusiliers						29	877	1	41	
2nd Bn., The Royal Scots Fusiliers						29	879	1	37	
1st Bn., The Cheshire Regiment ..						27	864	1	42	
1st Bn., The Royal Welch Fusiliers						27	869	1	37	
2nd Bn., The South Wales Borderers						28	878	1	40	
2nd Bn., The Cameronians ..						23	870	1	25	
2nd Bn., The Gloucestershire Regiment.						27	879	1	36	
1st Bn., The Worcestershire Regiment.						27	872	1	41	
1st Bn., The D. C. Light Infantry..						27	876	1	38	
1st Bn., The South Staffordshire Regiment.						27	881	1	39	
Carried over ..	1,260	39,735	45	1,845	3,285	659	20,912	25	917	

*Includes 1 Armourer R. A. O. G. attached.

'RETURN SHOWING THE ACTUAL STRENGTH OF THE ARMY AND ROYAL AIR FORCE IN INDIA INCLUDING PERSIAN GULF PORTS, THE E. P. FORCE, S. PERSIA AND S. E. PERSIA AND ADEN ON THE 1 June 1924' [197r] (15/70)

197

BRITISH INFANTRY—contd. 9

Actual Strength	Officers with King's Comm.	British Other Ranks.	Indian Officers.	Indian Other Ranks.	Followers.	SANCTIONED ESTABLISHMENT.					ACTUAL STRENGTH.				
						Officers with King's Comm.	British Other Ranks.	Indian Officers.	Indian Other Ranks.	Followers.	Officers with King's Comm.	British Other Ranks.	Indian Officers.	Indian Other Ranks.	Fol- lowers.
						1,260	39,735	45	1,845	3,285	659	20,912	25	917	1,537
27 884															
27 890											27	880	1	41	71
28 875											28	873	1	42	44
29 891											26	903	1	36	67
29 848											27	869	1	38	56
29 897											29	876	1	39	56
29 890											27	868	1	40	61
25 892											25	880	1	39	54
28 897											24	871	1	40	61
27 895											29	888	1	37	71
29 879						28	883	1	41	73	28	847	1	37	72
23 827											26	865	1	40	72
27 861											27	879	1	23	67
29 870											29	872	1	38	72
29 877											28	879	2	26	70
27 894											28	875	1	41	61
27 869											27	880	1	39	68
28 878											24	870	1	39	62
23 870											27	871	1	35	75
27 879											23	891	1	40	72
27 872											26	864	1	35	73
27 876											27	877	1	40	73
27 881															
						1,260	(a) 39,735	(a) 45	(a) 1,845	(a) 3,285	1,226	39,240	47	1,702	2,913
						1	..	2	145	8	1	..	2	203	7

(a) Revised peace establishments, vide A. I. (I.) No. 936 of 1923.

HCI4FA

'RETURN SHOWING THE ACTUAL STRENGTH OF THE ARMY AND ROYAL AIR FORCE IN INDIA INCLUDING PERSIAN GULF PORTS, THE E. P. FORCE, S. PERSIA AND S. E. PERSIA AND ADEN ON THE 1 June 1924' [197v] (16/70)

10 TANK CORPS.

Units.	SANCTIONED ESTABLISHMENT.					ACTUAL STRENGTH.				
	Officers with King's Comn.	British Other Ranks.	Indian Officers.	Indian Other Ranks.	Followers.	Officers with King's Comn.	British Other Ranks.	Indian Officers.	Indian Other Ranks.	Followers.
TANK CORPS.										
Armoured Car Companies.										
No. 6 Armoured Car Company ..		(b)				9	150			
No. 7 " " " ..	12	144			41	9	144			
No. 8 " " " ..						11	142			
No. 9 " " " ..						12	148			
No. 10 " " " ..						9	132			
No. 11 " " " ..	72	864			246	9	145			
Royal Tank Corps Centre ..	9	45			15	6	41			
TOTAL ..	(a) 81	(a) 909			(a) 261	65	902			

(a) Revised Peace Establishment, vide A. I. (I.) No. 557 of 1923.
(b) Includes I. R. A. O. C. attached.

'RETURN SHOWING THE ACTUAL STRENGTH OF THE ARMY AND ROYAL AIR FORCE IN INDIA INCLUDING PERSIAN GULF PORTS, THE E. P. FORCE, S. PERSIA AND S. E. PERSIA AND ADEN ON THE 1 June 1924' [198r] (17/70)

INDIAN CAVALRY. 11

		SANCTIONED ESTABLISHMENT.				ACTUAL STRENGTH.			
Units.		Officers with King's Comm.	Indian Officers.	Indian Other Ranks.	Fol-lowers.	Officer with King's Comm.	Indian Officers.	Indian Other Ranks.	Fol-lowers.
Regiments, 21.									
9	130					14	18	503	206
9	144					13	18	500	200
11	142					13	18	501	205
12	145					14	17	502	203
9	132					13	18	494	206
9	145					13	18	501	203
6	41					14	17	501	206
65	902					14	18	495	205
		294	378	10,584	43,26	14	18	504	208
		for 21 Cavalry Regiments at per Regiment.							
		14	18	504	206	14	18	504	206
						14	18	503	206
						14	18	493	206
						13	16	500	206
						15	18	500	206
						15	18	504	202
						14	17	497	204
						14	17	505	206
						13	18	504	205
						13	18	492	206
						16	18	498	206
TOTAL INDIAN CAVALRY REGIMENTS IN INDIA		294	378	10,584	4,326	289	372	(b) 10,502	4,307

(b) Includes one I. O. R. on Demobilisation leave.

'RETURN SHOWING THE ACTUAL STRENGTH OF THE ARMY AND ROYAL AIR FORCE IN INDIA INCLUDING PERSIAN GULF PORTS, THE E. P. FORCE, S. PERSIA AND S. E. PERSIA AND ADEN ON THE 1 June 1924' [198v] (18/70)

ENGINEERS.

Units.	SANCTIONED ESTABLISHMENT.					ACTUAL STRENGTH.				
	Officers with King's Com.	British Other Ranks.	Indian Officers.	Indian Other Ranks.	Fol-lowers.	Officers with King's Com.	British Other Ranks.	Indian Officers.	Indian Other Ranks.	Fol-lowers.
Sappers and Miners.										
King George's Own Bengal Sappers and Miners ..	} 100	170	149	7,388	594	24	58	52	2,673	
Queen Victoria's Own Madras Sappers and Miners						31	48	46	2,072	
Royal Bombay Sappers and Miners ..						31	44	45	2,255	
Burma " " " " ..						5	4	6	291	
TOTAL SAPPERS AND MINERS ..	100	170	149	7,388	594	101	154	149	7,261	
Defence Light Section.										
Karachi Defence Light Section ..	} 4	46	3	70	34	1	10	1	21	
Calcutta " " " " ..						1	7	1	17	
Rangoon " " " " ..						1	22	1	26	
Bombay " " " " ..						2	5	
Total ..	4	46	3	70	34	5	44	3	64	
TOTAL ENGINEERS ..	104	216	152	7,458	628	106	198	152	7,325	
Signal Units.										
No. A Divisional Signal Company ..	} 153†	2,217†	58†	3,222†	763	11	100	5	157	
No. B " " " " ..						12	184	5	264	
No. C " " " " ..						12	169	5	310	
No. D " " " " ..						14	179	5	290	
No. E " " " " ..						10	180	5	290	
No. F " " " " ..						10	122	5	173	
No. G " " " " ..						11	163	5	312	
No. 1 (Line) Company " A " Corps Signals ..						5	92	2	118	
No. 1 (Line) Company " B " Corps Signals ..						5	96	2	139	
No. 2 (Wireless) Company " A " Corps Signals ..						5	163	1	117	
No. 2 (Wireless) Company " B " Corps Signals ..						7	166	1	142	
Signal Training Centre and Depot ..						21	226	13	567	
"A" Cavalry Brigade Signal Troop ..						1	22	..	58	
"B" " " " " " " ..						1	24	..	30	
"C" " " " " " " ..	1	40	..	46						
"D" " " " " " "	9	..	14						
Army Signal School ..	4	15	2	12						
TOTAL SIGNAL UNITS ..	153	2,217	58	3,222	763	130	1,950*	56	3,015	

*Includes 22 men of Cavalry, Artillery and Infantry attached to Signals but borne on the strength of their units.
†Includes Army Signal School & B. Os., 16 B. O. Es., 2 I. Os., 12 I. O. Rs. and 30 Followers.

'RETURN SHOWING THE ACTUAL STRENGTH OF THE ARMY AND ROYAL AIR FORCE IN INDIA INCLUDING PERSIAN GULF PORTS, THE E. P. FORCE, S. PERSIA AND S. E. PERSIA AND ADEN ON THE 1 June 1924' [199r] (19/70)

199

INDIAN INFANTRY. 13

Units.	SANCTIONED ESTABLISHMENT.				ACTUAL STRENGTH.			
	Officers with King's Commn.	Indian Officers.	Indian Other Ranks.	Fol-lowers.	Officers with King's Commn.	Indian Officers.	Indian Other Ranks.	Fol-lowers.
Indian Infantry, 120½.								
1st Battalion, 1st Punjab Regiment ..	5	Battalions at 20	742	50	12	20	736	49
2nd " " " " ..					12	20	682	45
3rd " " " " ..					11	20	726	49
4th " " " " ..					12	20	732	49
5th " " " " ..					14	20	701	49
10th " " " " ..	10	16	784	43	9	16	788	42
Total ..	70	116	4,494	293	70	116	4,365	283
Indian Infantry, 120½.								
1st Battalion, 2nd Punjab Regiment ..	5	Battalions at 20	742	50	14	20	709	50
2nd " " " " ..					12	17	741	46
3rd " " " " ..					12	17	729	43
4th " " " " ..					11	20	748	49
5th " " " " ..					10	16	784	43
10th " " " " ..	10	16	784	43	10	17	762	43
Total ..	70	116	4,494	293	70	110	4,421	279
Indian Infantry, 120½.								
1st Battalion, 3rd Madras Regiment ..	2	Battalions at 20	742	50	12	20	741	50
2nd " " " " ..					11	20	736	48
10th Battalion, 3rd Madras Regiment ..	7	10	340	19	6	10	321	19
Total ..	31	50	1,824	119	29	50	1,798	117
Indian Infantry, 120½.								
1st Battalion, 4th Bombay Grenadiers ..	3	Battalions at 20	742	50	12	19	743	47
3rd " " " " ..					12	19	728	48
4th " " " " ..					12	18	722	50
10th " " " " (a) ..					8	12	488	27
Total ..	44	72	2,714	177	44	68	2,635	176
Indian Infantry, 120½.								
1st Battalion, 5th Mahratta Light Infantry	5	Battalions at 20	742	50	12	20	675	49
2nd " " " " " " ..					11	20	721	50
3rd " " " " " " ..					12	18	752	36
4th " " " " " " ..					14	20	756	50
5th Royal Battalion, 5th Mahratta Light Infantry.					12	19	710	47
10th Battalion, 5th Mahratta Light Infantry	10	16	784	43	9	16	732	41
Total ..	70	116	4,494	293	70	113	4,346	273
Carried over ..	285	470	18,020	1,175	283	457	17,565	1,128

(1) Excludes strength of Training Companies of units serving overseas on Imperial charge.
MCI4FA

'RETURN SHOWING THE ACTUAL STRENGTH OF THE ARMY AND ROYAL AIR FORCE IN INDIA INCLUDING PERSIAN GULF PORTS, THE E. P. FORCE, S. PERSIA AND S. E. PERSIA AND ADEN ON THE 1 June 1924' [199v] (20/70)

INDIAN INFANTRY—*contd.*

Units.	SANCTIONED ESTABLISHMENT.				ACTUAL STRENGTH.			
	Officers with King's Comm'n	Indian Officers.	Indian Other Ranks.	Fol-lowers.	Officers with King's Comm'n	Indian Officers.	Indian Other Ranks.	Fol-lowers.
Brought forward ..	285	470	18,020	1,175	283	457	17,565	1,123
Indian Infantry—<i>contd.</i>								
1st Battalion, 6th Rajputana Rifles (Wellesley's).	5 Battalions at 12	20	742	50	15	19	706	43
2nd Battalion, 6th Rajputana Rifles (Prince of Wales's Own).					12	19	612	33
3rd Battalion, 6th Rajputana Rifles ..					11	19	726	44
4th " " " " (Outram's)					12	18	716	40
5th " " " " (Napier's)					12	20	735	43
10th " " " " (Shekhwati).	10	16	608	45				
Total ..	70	116	4,494	293	72	111	4,463	293
1st Battalion, 7th Rajput Regiment (Queen Victoria's Own Light Infantry).	4 Battalions at 12	20	742	50	12	21	736	40
2nd Battalion, 7th Rajput Regiment (Prince Albert Victor's).					14	20	719	39
3rd Battalion, 7th Rajput Regiment (Duke of Connaught's Own).					13	20	692	38
4th Battalion, 7th Rajput Regiment ..					12	20	696	38
5th " " 7th " " " "					12	19	740	38
10th Battalion, 7th Rajput Regiment [The Lucknow Regiment].	10	16	784	43				
Total ..	70	117	4,493	293	72	116	4,351	293
1st Battalion, 8th Punjab Regiment ..	5 Battalions at 12	20	742	50	11	18	704	39
2nd " " " " " "					16	19	739	41
3rd " " " " " "					11	18	715	39
4th " " " " " " (Prince of Wales's Own).					12	20	725	40
5th Battalion, 8th Punjab Regiment (Burma)					13	19	693	39
10th " " " " " "	10	16	725	38				
Total ..	70	116	4,494	293	73	110	4,301	293
1st Royal Battalion, 9th Jat Regiment (Light Infantry).	3 Battalions at 12	20	742	50	12	20	724	39
2nd Battalion, 9th Jat Regiment (Mooltan Battalion).					14	18	739	40
3rd Battalion, 9th Jat Regiment ..					11	20	711	39
10th Battalion, 9th Jat Regiment ..					8	12	488	27
Total ..	44	72	2,714	177	45	70	2,687	177
Carried over ..	539	891	34,215	2,231	545	861	33,367	2,123

(a) Excludes strength of Training Company of unit serving overseas on Imperial charge.

'RETURN SHOWING THE ACTUAL STRENGTH OF THE ARMY AND ROYAL AIR FORCE IN INDIA INCLUDING PERSIAN GULF PORTS, THE E. P. FORCE, S. PERSIA AND S. E. PERSIA AND ADEN ON THE 1 June 1924' [200r] (21/70)

INDIAN INFANTRY—*contd.* 15

Units.	SANCTIONED ESTABLISHMENT.				ACTUAL STRENGTH.			
	Officers with King's Comm.	Indian Officers.	Indian Other Ranks.	Fol-lowers.	Officers with King's Comm.	Indian Officers.	Indian Other Ranks.	Fol-lowers.
Brought forward ..	539	891	34,215	2,231	545	864	33,367	2,152
Indian Infantry—<i>contd.</i>								
1st Battalion, 10th Baluch Regiment (Duchess of Connaught's Own).					11	20	671	45
2nd Battalion, 10th Baluch Regiment ..	5	Battalions	at		13	20	707	50
3rd Battalion, 10th Baluch Regiment (Queen Mary's Own).	12	20	742	50	12	16	680	46
4th Battalion, 10th Baluch Regiment (Duke of Connaught's Own).	1	Battalion (Training)	at		12	20	661	49
5th Battalion, 10th Baluch Regiment (King George's Own) (Jacob's Rifles).	10	16	784	43	12	19	607	42
10th Battalion, 10th Baluch Regiment ..					9	16	832	52
Total ..	70	116	4,494	293	69	111	4,218	284
1st Battalion, 11th Sikh Regiment ..					14	17	736	43
2nd Battalion, 11th Sikh Regiment ..					11	19	714	48
3rd Battalion, 11th Sikh Regiment (Rattray's Sikhs).	5	Battalions	at		12	21	714	42
4th Battalion, 11th " " ..	12	20	742	50	11	19	736	47
5th " " " " (Duke of Connaught's Own).	1	Battalion (Training)	at		13	20	736	50
10th Battalion, 11th Sikh Regiment ..	10	16	784	43	10	16	608	45
Total ..	70	116	4,494	293	71	112	4,294	275
1st Battalion, 12th Frontier Force Regiment (Prince of Wales's Own) (Sikhs).					14	20	738	50
2nd Battalion, 12th Frontier Force Regiment (Sikhs).	4	Battalions	at		13	18	698	50
3rd Battalion, 12th Frontier Force Regiment (Sikhs).	12	20	742	50	14	19	738	49
4th Battalion, 12th Frontier Force Regiment (Sikhs).	1	Battalion (Training)	at		13	20	736	49
10th Battalion, 12th Frontier Force Regiment (Queen Victoria's Own Corps of Guides).	9	14	636	35	8	15	633	36
Total ..	57	94	3,604	235	62	92	3,543	234
1st Battalion, 13th Frontier Force Rifles ..					12	18	706	48
2nd " " " " " " (Wilde's).	4	Battalions	at		15	20	704	49
3rd " " " " " " ..	12	20	742	50	14	20	728	50
4th " " " " " " ..	1	Battalion (Training)	at		13	20	722	49
10th " " " " " " (a)	9	14	636	35	9	16	659	53
Total ..	57	94	3,604	235	63	94	3,519	229
1st Battalion, 14th Punjab Regiment	5	Battalions	at		13	20	744	47
2nd Battalion, 14th Punjab Regiment [Duke of Cambridge's Own (Brownlow's)].	12	20	742	50	12	19	716	43
3rd Battalion, 14th Punjab Regiment ..					16	20	787	50
4th Battalion, 14th Punjab Regiment ..	1	Battalion (Training)	at		13	20	706	49
5th " " " " " " ..					12	18	630	46
10th " " " " " " (a)	10	16	784	43	10	15	740	42
Total ..	70	116	4,494	293	76	112	4,323	282
Carried over ..	863	1,427	54,905	3,580	886	1,385	53,264	3,456

(a) Excludes strength of Training Companies of units on Imperial charge.

'RETURN SHOWING THE ACTUAL STRENGTH OF THE ARMY AND ROYAL AIR FORCE IN INDIA INCLUDING PERSIAN GULF PORTS, THE E. P. FORCE, S. PERSIA AND S. E. PERSIA AND ADEN ON THE 1 June 1924' [200v] (22/70)

INDIAN INFANTRY—*contd.*

Units.	SANCTIONED ESTABLISHMENT.				ACTUAL STRENGTH.			
	Officers with King's Commr.	Indian Officers.	Indian Other Ranks.	Fol-lowers.	Officers with King's Commr.	Indian Officers.	Indian Other Ranks.	Fol-lowers.
Brought forward ..	883	1,427	54,905	3,580	886	1,385	53,264	3,480
Indian Infantry—<i>contd.</i>								
2nd Battalion, 15th Punjab Regiment ..	3	Battalions at	..	15	19	696
3rd " " " " (b) ..	12	20	742	50	15	20	721	..
4th " " " " ..	1	Battalion (Training) at	..	14	17	741
10th " " " " (a) ..	8	12	483	27	7	12	483	..
Total ..	44	72	2,714	177	51	68	2,641	..
1st Battalion, 16th Punjab Regiment ..	4	Battalions at	..	14	19	730
2nd " " " " ..	12	20	742	50	12	19	710	..
3rd " " " " ..	1	Battalion (Training) at	..	12	20	673
4th " " " " (Bhopal) ..	1	Battalion (Training) at	..	14	18	713
10th " " " " ..	9	14	636	35	8	14	683	..
Total ..	57	94	3,604	235	60	90	3,509	..
1st Battalion, 17th Dogra Regiment (Prince of Wales's Own) ..	3	Battalions at	..	14	19	742
2nd " " " " ..	12	20	742	50	12	20	739	..
3rd " " " " ..	1	Battalion (Training) at	..	14	19	692
10th " " " " ..	8	12	488	27	8	10	529	..
Total ..	44	72	2,714	177	48	68	2,692	..
1st Battalion, 18th Royal Garhwal Rifles ..	3	Battalions at	..	15	20	738
2nd " " " " ..	12	20	742	50	12	20	736	..
3rd " " " " ..	1	Battalion (Training) at	..	11	20	742
10th " " " " ..	8	12	488	27	13	12	481	..
Total ..	44	72	2,714	177	51	72	2,697	..
1st Battalion, 19th Hyderabad Regt. (Russell's) ..	4	Battalions at	..	12	19	723
2nd " " " "	at	..	10	20	722
3rd " " " " (Berar) (Half) ..	12	20	742	50	11	12	443	..
4th " " " " ..	1	Battalion (Training) at	..	12	21	721
1st Kumaon Rifles	at	..	10	20	722
10th " " " " (Russell's) ..	9	14	636	35	8	14	709	..
Total ..	57	94	3,604	235	63	106	4,046	..
1st Battalion, 20th Burma Rifles ..	2	Battalions at	..	15	18	655
3rd " " " " (Kachin) ..	12	20	742	50	14	19	692	..
10th " " " " (a) ..	7	10	340	19	7	11	430	..
Total ..	31	50	1,824	119	36	48	1,777	..
Carried over ..	1,140	1,881	72,079	4,700	1,195	1,837	70,626	4,680

(a) Excludes strength of Training Companies of units on Imperial charge.

'RETURN SHOWING THE ACTUAL STRENGTH OF THE ARMY AND ROYAL AIR FORCE IN INDIA INCLUDING PERSIAN GULF PORTS, THE E. P. FORCE, S. PERSIA AND S. E. PERSIA AND ADEN ON THE 1 June 1924' [201r] (23/70)

INDIAN INFANTRY—*contd.* 17 (20)

Units.	SANCTIONED ESTABLISHMENT.				ACTUAL STRENGTH.			
	Officers with King's Comm.	Indian Officers.	Indian Other Ranks.	Fol-lowers.	Officers with King's Comm.	Indian Officers.	Indian Other Ranks.	Fol-lowers.
Brought forward ..	1,140	1,881	72,079	4,700	1,195	1,837	70,626	4,510
Indian Infantry—<i>concl.</i>								
(GURKHAS.)								
1st Battalion, 1st K. G. O. Gurkha Rifles ..	13 for each Battalion	20	921	50	14	20	893	50
2nd " " " " " " ..					14	19	904	50
1st Battalion, 4th Gurkha Rifles ..					14	20	907	50
2nd " " " " " " ..					11	20	884	50
Total ..	52	80	3,684	200	53	79	3,588	200
1st Battalion, 2nd K. E. O. Gurkha Rifles ..	13 at 20 1 Battalion (1-2nd) at 21	20	921	50	15	20	916	50
2nd " " " " " " ..					14	20	904	50
1st Battalion, 9th Gurkha Rifles ..					15	20	914	49
2nd " " " " " " ..					12	20	917	50
Total ..	52	81	3,683	200	56	80	3,651	199
1st Battalion, 3rd Q. A. O. Gurkha Rifles ..	13 for each Battalion.	20	921	50	13	18	910	48
2nd " " " " " " ..					13	20	903	50
1st Battalion, 8th Gurkha Rifles ..					11	20	912	50
2nd " " " " " " ..					14	18	900	50
Total ..	52	80	3,684	200	51	76	3,625	198
1st Battalion, 5th Royal Gurkha Rifles (F.F.) ..	13 for each Battalion.	20	921	50	14	20	915	50
2nd " " " " " " ..					12	20	890	48
1st Battalion, 6th Gurkha Rifles ..					14	20	906	50
2nd " " " " " " ..					11	20	913	46
Total ..	52	80	3,684	200	51	80	3,624	194
1st Battalion, 7th Gurkha Rifles ..	13 for each Battalion.	20	921	50	13	20	909	47
2nd " " " " " " ..					15	20	904	50
1st Battalion, 10th Gurkha Rifles ..					13	20	887	50
2nd " " " " " " ..					15	17	909	48
Total ..	52	80	3,684	200	56	77	3,609	195
Recruit Boys at 15 per Gurkha Battalion	300
TOTAL INDIAN INFANTRY BATTALIONS IN INDIA.	1,400	2,282	90,798	5,700	1,462	2,229	88,723 (b)	5,546

(b) Includes 6 Indian Other Ranks on demobilization leave.

HQ14FA

'RETURN SHOWING THE ACTUAL STRENGTH OF THE ARMY AND ROYAL AIR FORCE IN INDIA INCLUDING PERSIAN GULF PORTS, THE E. P. FORCE, S. PERSIA AND S. E. PERSIA AND ADEN ON THE 1 June 1924' [201v] (24/70)

18 INDIAN INFANTRY—*contd.*

Units.	SANCTIONED ESTABLISHMENT.				ACTUAL STRENGTH.			
	Officers with King's Comm'n.	Indian Officers.	Indian Other Ranks.	Fol-lowers.	Officers with King's Comm'n.	Indian Officers.	Indian Other Ranks.	Fol-lowers.
Training Companies affiliated to Infantry Units on Imperial charge.								
2nd Battalion, 4th Bombay Grenadiers ..					2	2	191	
6th " 13th Frontier Force Rifles ..					1	2	109	
	1	2	148	8				
	for each Training Company.							
1st " 15th Punjab Regiment ..					1	2	175	
2nd " 20th Burma Rifles ..					1	2	228	
Total on Imperial charge ..	4	8	592	32	5	8	703	

(c) These are excluded from the strength of Training Battalions.
*Chargeable against Aden and Persia Grant.

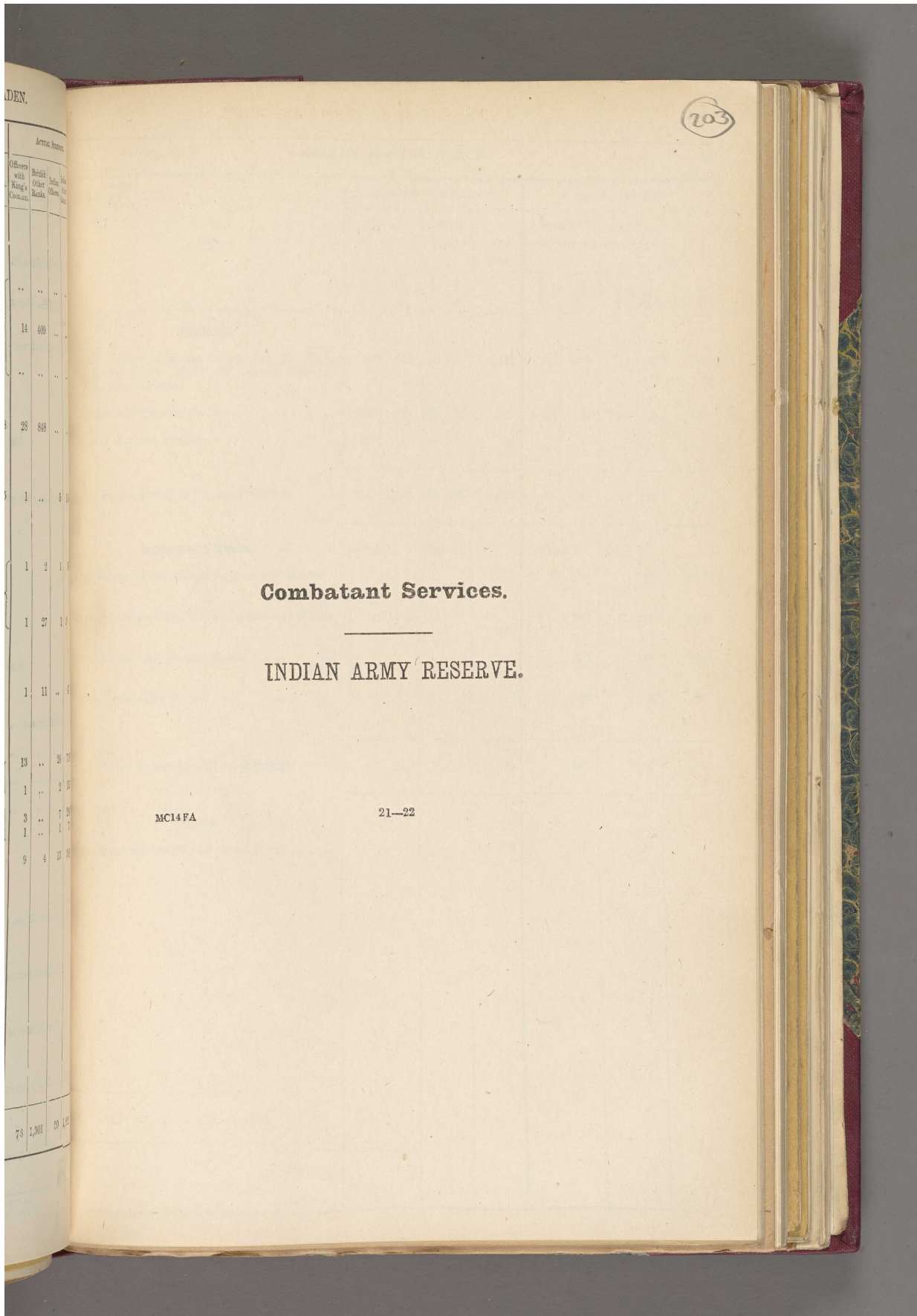
'RETURN SHOWING THE ACTUAL STRENGTH OF THE ARMY AND ROYAL AIR FORCE IN INDIA INCLUDING PERSIAN GULF PORTS, THE E. P. FORCE, S. PERSIA AND S. E. PERSIA AND ADEN ON THE 1 June 1924' [202r] (25/70)

PIONEER BATTALIONS. 19

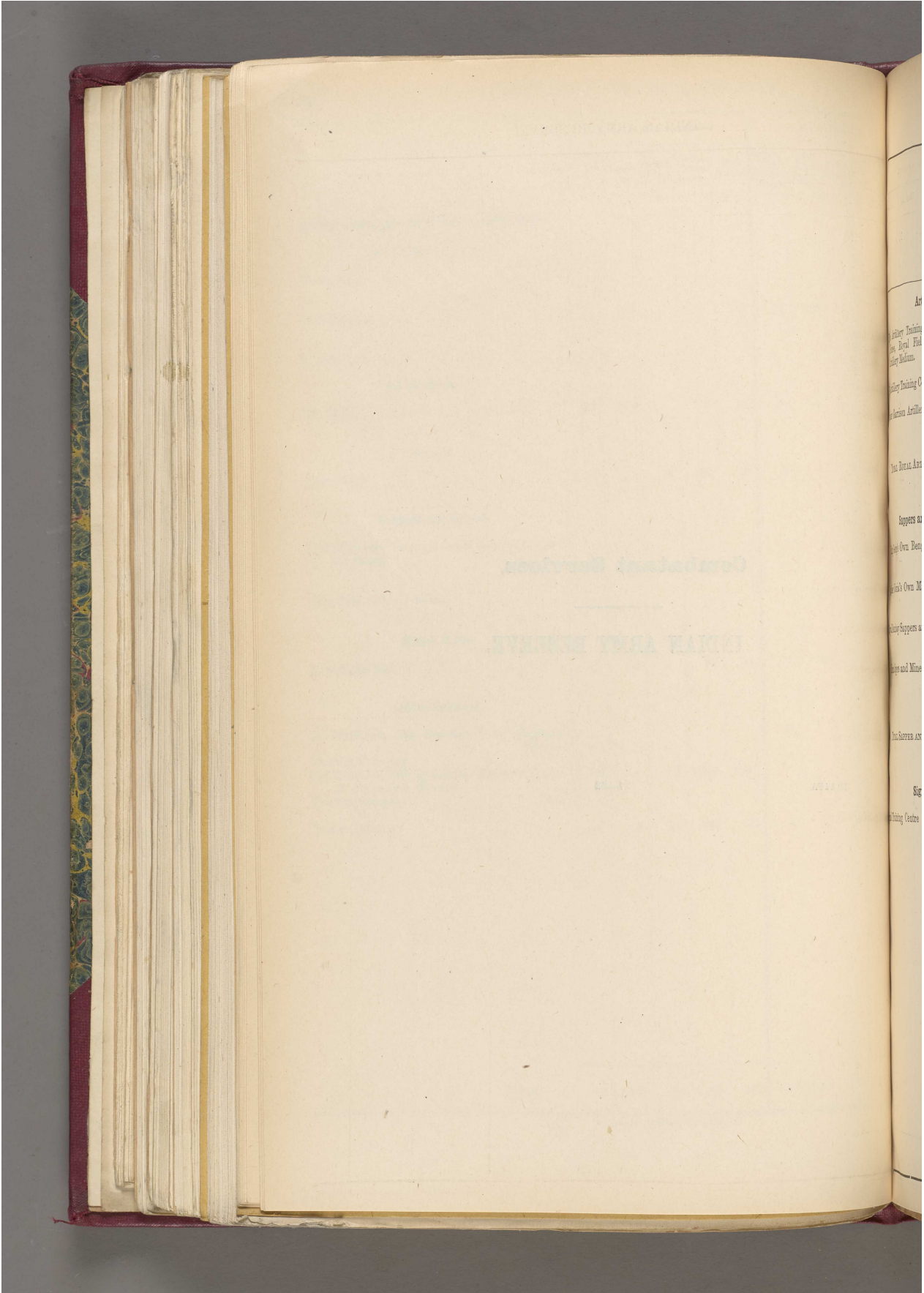
Actual Strength	Officers with King's Commn.	Indian Officers.	Indian Other Ranks.	Fol-lowers.	SANCTIONED ESTABLISHMENT.				ACTUAL STRENGTH.				
					Officers with King's Commn.	Indian Officers.	Indian Other Ranks.	Fol-lowers.	Officers with King's Commn.	Indian Officers.	Indian Other Ranks.	Fol-lowers.	
Pioneer Battalions, 12.													
2													
					2 Battalions at				12	16	701	38	
					12	16	720	38	12	15	700	38	
					1 Battalion (Training) at				8	10	367	20	
					8	9	328	19					
					Total ..	32	41	1,768	95	32	41	1,768	96
					2nd Battalion, 2nd Bombay Pioneers ..	3 Battalions at			12	12	503	34	
					12	16	720	38	13	14	701	36	
					1 Battalion (Training) at				12	16	645	35	
					9	11	469	27	8	11	594	26	
					Total ..	45	59	2,629	141	45	53	2,443	131
					1st Battalion, 3rd Sikh Pioneers ..	3 Battalions at			13	17	710	38	
					12	16	720	38	10	17	716	38	
					1 Battalion (Training) at				14	16	710	37	
					9	11	469	27	8	10	474	27	
					Total ..	45	59	2,629	141	45	60	2,610	140
					1st Battalion, 4th Hazara Pioneers ..	13	18	923	46	13	19	905	46
					Total Pioneer Battalions ..	135	177	7,949	423	135	173	7,726	413
					Training Companies affiliated to Pioneers serving overseas.								
					1st Battalion, 2nd Bombay Pioneers ..	1	2	141	8	1	2	92	9
					TOTAL ..	(b) 1	(b) 2	(b) 141	(b) 8	(b) 1	(b) 2	(b) 92	(b) 9

(a) Excludes strength of Training Companies of units serving overseas on Imperial charge.
(b) These are excluded from the strength of Training Battalion.

'RETURN SHOWING THE ACTUAL STRENGTH OF THE ARMY AND ROYAL AIR FORCE IN INDIA INCLUDING PERSIAN GULF PORTS, THE E. P. FORCE, S. PERSIA AND S. E. PERSIA AND ADEN ON THE 1 June 1924' [203r] (27/70)



**'RETURN SHOWING THE ACTUAL STRENGTH OF THE ARMY AND ROYAL AIR FORCE IN INDIA
INCLUDING PERSIAN GULF PORTS, THE E. P. FORCE, S. PERSIA AND S. E. PERSIA AND
ADEN ON THE 1 June 1924' [203v] (28/70)**



'RETURN SHOWING THE ACTUAL STRENGTH OF THE ARMY AND ROYAL AIR FORCE IN INDIA INCLUDING PERSIAN GULF PORTS, THE E. P. FORCE, S. PERSIA AND S. E. PERSIA AND ADEN ON THE 1 June 1924' [204r] (29/70)

204

INDIAN ARMY RESERVE. 23

Units.	SANCTIONED ESTABLISHMENT.					ACTUAL STRENGTH.				
	Class I.		Class II.		TOTAL.	Class I.		Class II.		TOTAL.
	Gunners.	Drivers.	Gunners.	Drivers.		Gunners.	Drivers.	Gunners.	Drivers.	
Artillery.										
Royal Artillery Training Centre, for the Royal Horse, Royal Field and Royal Garrison Artillery Medium.	30	856	20	571	1,477	39	275	24	80	428
Pack Artillery Training Centre	243	276	162	184	865	44	74	24	45	187
Frontier Garrison Artillery	21	..	14	..	35
TOTAL ROYAL ARTILLERY RESERVES ..	494	1,132	196	755	2,377	83	349	58	125	615
Sappers and Miners.										
King George's Own Bengal Sappers and Miners						258		117		375
Queen Victoria's Own Madras Sappers and Miners	920		..		920	146		71		217
Royal Bombay Sappers and Miners						155		46		201
Burma Sappers and Miners						23		3		26
TOTAL SAPPER AND MINER RESERVES ..	920		..		920	582		237		819
Signals.										
Signal Training Centre and Depot					300	48		10		58

'RETURN SHOWING THE ACTUAL STRENGTH OF THE ARMY AND ROYAL AIR FORCE IN INDIA INCLUDING PERSIAN GULF PORTS, THE E. P. FORCE, S. PERSIA AND S. E. PERSIA AND ADEN ON THE 1 June 1924' [204v] (30/70)

24 INDIAN ARMY RESERVE—contd.

Units.	SANCTIONED ESTABLISHMENT.			ACTUAL STRENGTH.		
	Class I.	Class II.	TOTAL.	Class I.	Class II.	TOTAL.
1st D. Y. O. Skinner's Horse				29	11	
2nd Lancers (Gardner's Horse)				37	11	
3rd Cavalry				49	25	
4th D. C. O. Hodson's Horse				30	10	
5th K. E. O. Probyn's Horse				21	12	
6th D. C. O. Lancers				27	15	
7th Light Cavalry				13	2	
8th K. G. O. Light Cavalry				21	4	
9th Royal Decan Horse				40	7	
10th Q. V. O. Corps of Guides Cavalry F. F.				20	--	
11th P. A. V. O. Cavalry F. F.	29	19	48	27	16	
12th Cavalry F. F.	for each Regiment			51	4	
13th D. C. O. Lancers	609	399	1,008	16	--	
14th P. W. O. Scinde Horse				9	1	
15th Lancers				7	2	
16th Light Cavalry				9	2	
17th Q. V. O. Poona Horse				32	23	
18th K. E. O. Cavalry				31	9	
19th K. G. O. Lancers				8	1	
20th Lancers				21	5	
21st K. G. O. Central India Horse				30	17	
TOTAL CAVALRY	609	399	1,008	538	170	

'RETURN SHOWING THE ACTUAL STRENGTH OF THE ARMY AND ROYAL AIR FORCE IN INDIA INCLUDING PERSIAN GULF PORTS, THE E. P. FORCE, S. PERSIA AND S. E. PERSIA AND ADEN ON THE 1 June 1924' [205v] (32/70)

26

INDIAN ARMY RESERVE—*contd.*
INDIAN INFANTRY—*contd.*

Units.	SANCTIONED ESTABLISHMENT.			ACTUAL STRENGTH.		
	Class A.	Class B.	TOTAL.	Class A.	Classes I & II.	TOTAL.
Brought forward	924	2,724	3,648	606	908	1,514
<i>Indian Infantry—contd.</i>						
1st Battalion, 4th Bombay Grenadier	231	681	912	220	546	766
3rd " " " "						
4th " " " "						
10th " " " "						
1st Battalion, 5th Mahratta Light Infantry	385	1,135	1,520	260	412	672
2nd " " " "						
3rd " " " "						
4th " " " "						
5th Royal Bn. " " " "						
10th Battalion " " " "						
1st Battalion, 6th Rajputana Rifles	385	1,135	1,520	276	514	790
2nd " " " "						
3rd " " " "						
4th " " " "						
5th " " " "						
10th " " " "						
Carried over	1,925	5,675	7,600	1,362	2,380	4,742

'RETURN SHOWING THE ACTUAL STRENGTH OF THE ARMY AND ROYAL AIR FORCE IN INDIA INCLUDING PERSIAN GULF PORTS, THE E. P. FORCE, S. PERSIA AND S. E. PERSIA AND ADEN ON THE 1 June 1924' [206r] (33/70)

206

INDIAN ARMY RESERVE—*contd.* 27
INDIAN INFANTRY—*contd.*

Units.	SANCTIONED ESTABLISHMENT.			ACTUAL STRENGTH.		
	Class A.	Class B.	TOTAL.	Class A.	Classes I & II.	TOTAL.
Brought forward	1,925	5,675	7,600	1,362	2,380	3,742
Indian Infantry—<i>contd.</i>						
1st Battalion, 7th Rajput Regiment	385	1,135	1,520	251	734	985
2nd " " " " " "						
3rd " " " " " "						
4th " " " " " "						
5th " " " " " "						
1st Battalion, 8th Punjab Regiment	385	1,135	1,520	238	388	626
2nd " " " " " "						
3rd " " " " " "						
4th " " " " " "						
5th " " " " " "						
1st Royal Battalion, 9th Jat Regiment	231	681	912	130	494	624
2nd " " " " " "						
3rd " " " " " "						
4th Battalion, 9th Jat Regiment						
Carried over	2,926	8,626	11,552	1,981	3,996	5,977

'RETURN SHOWING THE ACTUAL STRENGTH OF THE ARMY AND ROYAL AIR FORCE IN INDIA INCLUDING PERSIAN GULF PORTS, THE E. P. FORCE, S. PERSIA AND S. E. PERSIA AND ADEN ON THE 1 June 1924' [206v] (34/70)

28

INDIAN ARMY RESERVE—*contd.*
INDIAN INFANTRY—*contd.*

Units.	SANCTIONED ESTABLISHMENT.			ACTUAL STRENGTH.		
	Class A.	Class B.	TOTAL.	Class A.	Classes I & II.	TOTAL.
Brought forward	2,926	8,626	11,552	1,981	3,906	5,887
Indian Infantry—<i>contd.</i>						
1st Battalion, 10th Baluch Regiment	385	1,135	1,520	241	298	539
2nd " " " " " "						
3rd " " " " " "						
4th " " " " " "						
5th " " " " " "						
10th " " " " " "						
1st Battalion, 11th Sikh Regiment	385	1,135	1,520	238	376	614
2nd " " " " " "						
3rd " " " " " "						
4th " " " " " "						
5th " " " " " "						
10th " " " " " "						
1st Battalion, 12th Frontier Force Regiment	308	908	1,216	279	326	605
2nd " " " " " "						
3rd " " " " " "						
10th " " " " " "						
1st Battalion, 13th Frontier Force Rifles	308	908	1,216	249	303	552
2nd " " " " " "						
4th " " " " " "						
10th " " " " " "						
Carried over	4,312	12,712	17,024	2,988	5,349	8,337

'RETURN SHOWING THE ACTUAL STRENGTH OF THE ARMY AND ROYAL AIR FORCE IN INDIA INCLUDING PERSIAN GULF PORTS, THE E. P. FORCE, S. PERSIA AND S. E. PERSIA AND ADEN ON THE 1 June 1924' [207v] (36/70)

30

INDIAN ARMY RESERVE—*contd.*

INDIAN INFANTRY—*contd.*

Units.	SANCTIONED ESTABLISHMENT.			ACTUAL STRENGTH.		
	Class A.	Class B.	TOTAL.	Class A.	Classes I & II.	TOTAL.
Brought forward	5,467	16,117	21,584	3,743	6,870	10,613
<i>Indian Infantry—contd.</i>						
1st Battalion, 18th Royal Garhwal Rifles	231	681	912	208	369	
2nd " " " " " "						
3rd " " " " " "						
10th " " " " " "						
1st Battalion, 19th Hyderabad Regiment	308	908	1,216	346	1,091	
2nd " " " " " "						
4th " " " " " "						
1st Kumaon Rifles						
10th Battalion, 19th Hyderabad Regiment						
1st Battalion, 20th Burma Rifles	154	454	608	33	35	
3rd " " " " " "						
10th " " " " " "						
Carried over	6,160	18,160	24,320	4,330	8,365	12,695

'RETURN SHOWING THE ACTUAL STRENGTH OF THE ARMY AND ROYAL AIR FORCE IN INDIA INCLUDING PERSIAN GULF PORTS, THE E. P. FORCE, S. PERSIA AND S. E. PERSIA AND ADEN ON THE 1 June 1924' [208v] (38/70)

32 INDIAN ARMY RESERVE—concl'd.

PIONEER BATTALIONS.

Units.	SANCTIONED ESTABLISHMENT.			ACTUAL STRENGTH.		
	Class A.	Class B.	TOTAL.	Class A.	Class. I & II.	TOTAL.
Pioneer Battalions.						
1st Battalion, 1st Madras Pioneers	110 at 55 per unit	200	310	106	147	
2nd " " " " " "						
10th " " " " " "						
2nd Battalion, 2nd Bombay Pioneers	165	300	465	133	334	
3rd " " " " " "						
4th " " " " " "						
10th " " " " " "						
1st Battalion, 3rd Sikh Pioneers	165	300	465	123	313	
2nd " " " " " "						
3rd Royal Battalion, 3rd Sikh Pioneers						
10th Battalion, 3rd Sikh Pioneers						
1st Battalion, 4th Hazara Pioneers	48	33	81	..	7	
TOTAL PIONEERS RESERVE	488	833	(a)1,321	362	801	1,163

(a) Includes 43 class I and 33 class II of 1-4th Hazara Pioneers.

'RETURN SHOWING THE ACTUAL STRENGTH OF THE ARMY AND ROYAL AIR FORCE IN INDIA INCLUDING PERSIAN GULF PORTS, THE E. P. FORCE, S. PERSIA AND S. E. PERSIA AND ADEN ON THE 1 June 1924' [209r] (39/70)

MECHANICAL TRANSPORT. 33

Units.	SANCTIONED ESTABLISHMENT.						ACTUAL STRENGTH.					
	Officers with King's Commn.	British Other Ranks.	I. Os. and Indian Oth. r Ranks.	CIVILIANS. Clerks and Store-keepers.	Indian artifi-cers.	Followers.	Officers with King's Commn.	British Other Ranks.	I. Os. and Indian Other Ranks.	CIVILIANS. Clerks and Store-keepers.	Indian artifi-cers.	Followers.
Group Commanders	6	..	3	6	..	3	6	..	2	9	..	3
Motor Ambulance Convoys ..	22	52	120	21	180	42	24	45	359	23	196	65
Heavy M. T. Companies	18	56	292	12	72	72	26	86	610	23	135	77
Light M. T. Coys.	23	84	511	21	126	105	9	36	232	9	56	25
Ford Van Companies	187	3	..	15	6	6	191	3	33	15
Khyber Ropeway Company ..	5	4	24	35	62	418	5	4	24	58	39	402
M. T. Coy. (Mobile Repair Units)	12	32	72	12	116	24	12	33	76	12	111	22
M. T. Companies attached Medium Batteries.	13	143	230	8	80	44	15	163	107	2	..	20
M. T. Training Centre	5	16	233	6	8	15	8	17	216	5	8	18
C.M. T. Stores Depot	7	14	10	103	31	98	8	19	11	96	33	87
Repairs Shop (M.T.)	12	141	58	74	578	224	20	122	55	74	554	194
Technical Inspectors	3	..	3	6	..	12	3	..	2	6	..	9
M. T., Aden	1	7	56	3	15	6	1	8	56	3	16	6
M. T., Persia	2	..	1	3	..	1	..
Leave Reserve	10
TOTAL	142	549	1,851	310	1,269	1,078	143	542	1,914	323	1,182	943
Reservists	688	..	152

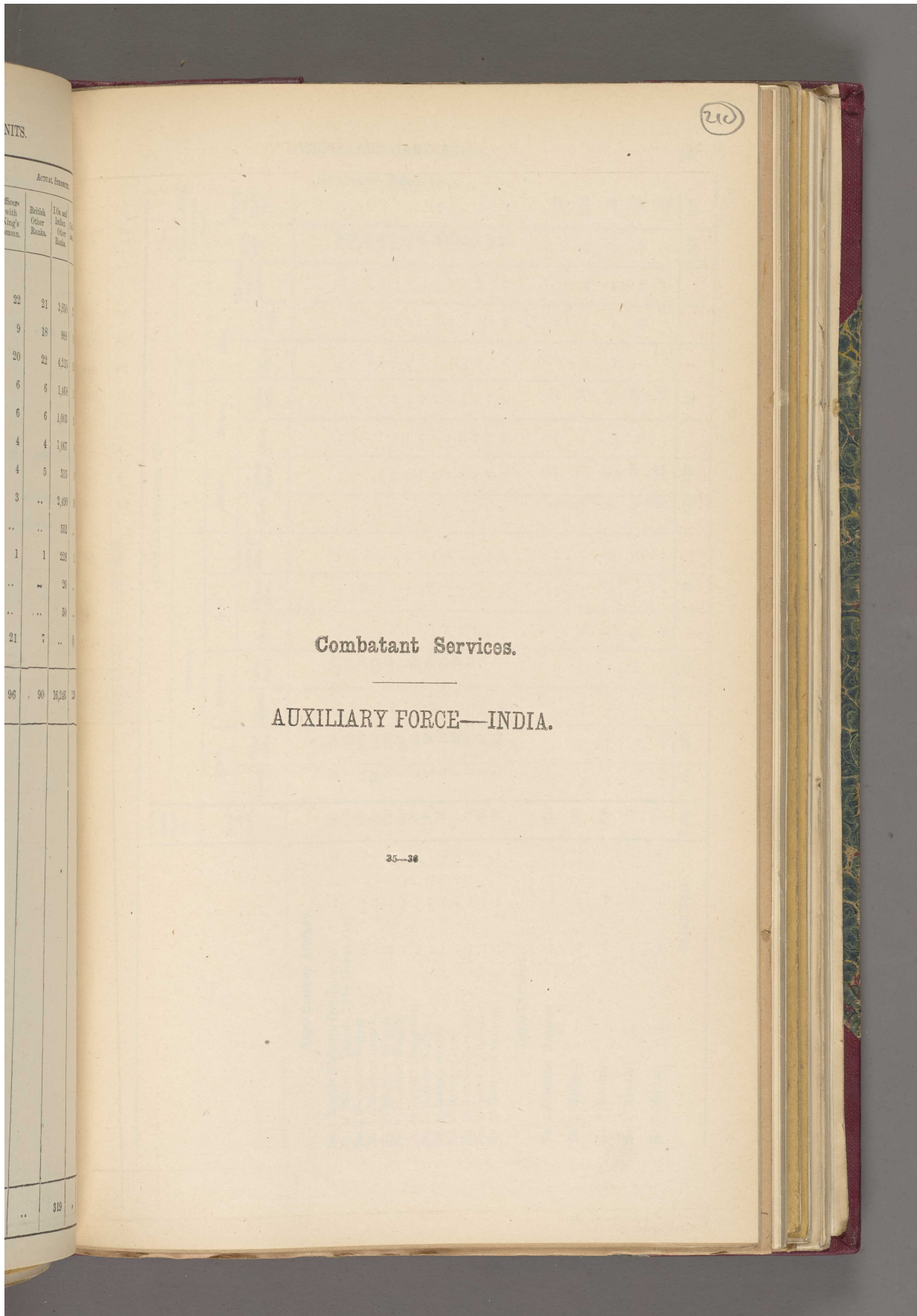
'RETURN SHOWING THE ACTUAL STRENGTH OF THE ARMY AND ROYAL AIR FORCE IN INDIA INCLUDING PERSIAN GULF PORTS, THE E. P. FORCE, S. PERSIA AND S. E. PERSIA AND ADEN ON THE 1 June 1924' [209v] (40/70)

34 ANIMAL TRANSPORT UNITS.

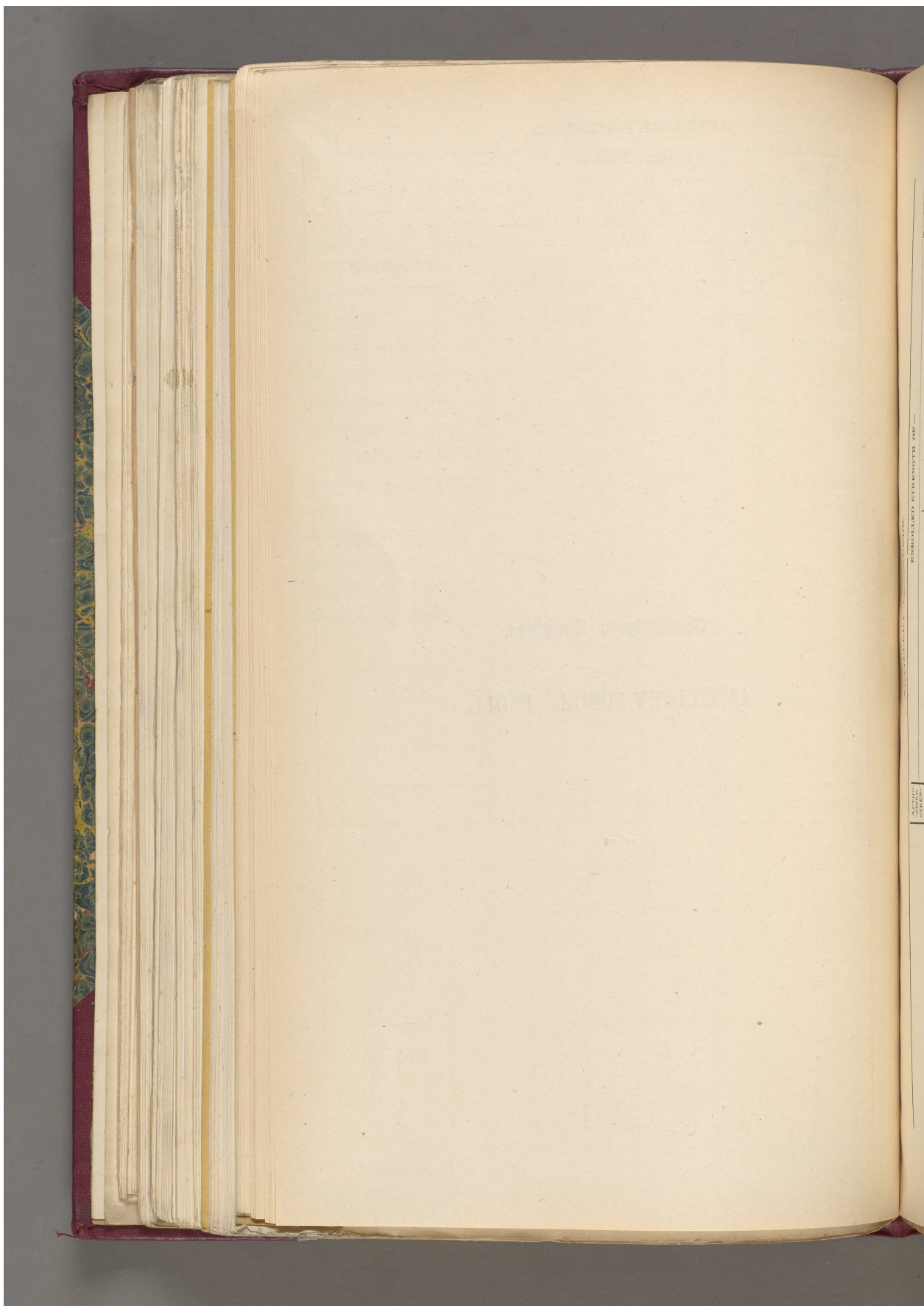
Units.	SANCTIONED ESTABLISHMENT.					ACTUAL STRENGTH.				
	Officers with King's Commn.	British Other Ranks.	I. Os. and Indian Other Ranks.	Civil-ians.	Follow-ers.	Officers with King's Commn.	British Other Ranks.	I.Os. and Indian Other Ranks.	Civil-ians.	Follow-ers.
Mule Corps Units.										
Infantry Bde. Transport Cos. ..	22	22	4,389	33	682	22	21	3,850	27	308
Mule Transport Coy. (L. E.) ..	9	18	1,035	18	216	9	18	988	18	210
Divisional Troops Transport Cos. ...	20	20	4,570	30	690	20	22	4,215	28	344
Cavalry Brigade Transport Cos. ..	6	6	1,488	12	222	6	6	1,468	11	208
Transport Depots	6	6	678	18	126	6	6	1,003	20	133
Camel Transport Cos.	4	4	900	6	88	4	4	1,067	6	61
Camel Transport Cos. (L. E.) ..	4	8	392	8	60	4	5	315	9	49
Camel Transport Cos. Silladar ..	3	..	1,071	9	69	3	..	2,490	19	143
Bullock Troops (L. E.)	561	552
Aden Transport Corps	1	1	234	1	27	1	1	228	1	20
Gulf Ports Transport	21	..	2	20	..	1
Transport Establishment, Gilgit	52	..	4	50	..	4
Training and Leave Reserve ..	21	7	..	12	..	21	7	..	(b)	..
TOTAL ..	(a) 96	92	15,391	147	2,186	96	90	16,246	139	2,046
Driver Reservists	1,000	319

(a) Includes Departmental Officers,
(b) Shown against units.

'RETURN SHOWING THE ACTUAL STRENGTH OF THE ARMY AND ROYAL AIR FORCE IN INDIA INCLUDING PERSIAN GULF PORTS, THE E. P. FORCE, S. PERSIA AND S. E. PERSIA AND ADEN ON THE 1 June 1924' [210r] (41/70)



'RETURN SHOWING THE ACTUAL STRENGTH OF THE ARMY AND ROYAL AIR FORCE IN INDIA INCLUDING PERSIAN GULF PORTS, THE E. P. FORCE, S. PERSIA AND S. E. PERSIA AND ADEN ON THE 1 June 1924' [210v] (42/70)



'RETURN SHOWING THE ACTUAL STRENGTH OF THE ARMY AND ROYAL AIR FORCE IN INDIA INCLUDING PERSIAN GULF PORTS, THE E. P. FORCE, S. PERSIA AND S. E. PERSIA AND ADEN ON THE 1 June 1924' [211r] (43/70)

Corps.		ENROLLED STRENGTH OF —												TOTAL RANKS (EXCLUDING CADETS).					
		ARTILLERY.				ROYAL ENGINEERS.				ARTILLERY ENGINEERS.									
Actual ranks.	Total ranks.	Active.		Reserve.		Cadet.		Supernumerary officers.		Active.		Reserve.		Cadet.		Super-numerary officer.	Artillery.	Electrical Engineers.	
		Officers.	Other ranks.	Officers.	Other ranks.	Officers.	Other ranks.	Officers.	Other ranks.	Officers.	Other ranks.	Officers.	Other ranks.	Officers.	Other ranks.				
Royal Garrison Artillery.																			
..	340	8	50	..	218	276
No. 1 Brigade (Calcutta Port Defence)	..	190	85	..	75	170
No. 11 (Madras) Brigade "The Duke's Own"	..	190	12	..	20	162
No. 3 (Rangoon) Brigade	..	288	13	..	477	330
No. 1 (Cossipore) Brigade	..	190	7	..	46	173
No. 5 (Bombay) Brigade	..	190	7	..	27	191
No. 6 (Lucknow) Brigade	..	70	5	..	20	92
No. 14 Battery (Bangalore)	..	30	2	..	12	41
No. 15 Battery (Kerlee)	..	70	3	..	13	26
No. 16 Battery (Delhi)	..	70	1	..	22	43
No. 17 Battery (Agra)	..	70	1	..	10	23
No. 18 Battery (Bareilly)	..	70	1	..	8	60
No. 19 Battery (Allahabad)	..	70	1	..	17	31
No. 20 Battery (Cawnpore)
Royal Engineers.																			
No. 1 (Calcutta) Company	2	28	57
No. 2 (Rangoon)	2	62	141
No. 3 (Bombay)	4	41	45
No. 4 (Karachi)	2	40	50
No. 5 (Madras)	3	49	67
GRAND TOTAL	..	2,338	70	882	..	666	13	220	1,618	..	400

211

'RETURN SHOWING THE ACTUAL STRENGTH OF THE ARMY AND ROYAL AIR FORCE IN INDIA INCLUDING PERSIAN GULF PORTS, THE E. P. FORCE, S. PERSIA AND S. E. PERSIA AND ADEN ON THE 1 June 1924' [211v] (44/70)

38

AUXILIARY FORCE—INDIA—*contd.*

CAVALRY.

CAVALRY.

ENROLLED STRENGTH OF —

Corps.	AUTHORISED STRENGTH.		ENROLLED STRENGTH OF —												TOTAL ALL RANKS (EXCLUDING CADET).
	Total all ranks.		MOUNTED.				DISMOUNTED AND INFANTRY.				SUPERNUMERARY OFFICERS.				
	Officers.	Other ranks.	Active.	Reserve.	Cadet.	Supernumerary officers.	Active.	Reserve.	Cadet.	Other ranks.	Other ranks.	Other ranks.	Supernumerary officers.	Dismounted and Infantry.	
The Bihar Light Horse ..	480	11	60	4	50	..	160	176	214
The Calcutta Light Horse ..	320	15	161	303	..
The Surma Valley Light Horse ..	420	25	209	385	..
The Assam Valley Light Horse ..	870	24	301	3	237	..	7	71	..	117	565	195
The United Provinces Horse (S. R.) ..	320	14	123	..	186	323	..
The United Provinces Horse (N. R.) ..	200	6	51	..	83	140	..
The Bombay Light Horse ..	150	6	50	..	14	6	..	70	..
The Northern Bengal Mounted Rifles ..	630	19	255	..	202	..	10	92	..	26	177	476	138
The Punjab Light Horse ..	240	10	94	..	111	215	..
The Southern Provinces Mounted Rifles ..	515	27	227	..	300	554	..
The Chota Nagpur Regiment ..	900	10	71	..	161	..	15	165	..	289	242	479
GRAND TOTAL ..	5,000	108	1,602	3	1,676	..	36	378	..	612	..	177	..	3,449	1,013

'RETURN SHOWING THE ACTUAL STRENGTH OF THE ARMY AND ROYAL AIR FORCE IN INDIA INCLUDING PERSIAN GULF PORTS, THE E. P. FORCE, S. PERSIA AND S. E. PERSIA AND ADEN ON THE 1 June 1924' [212r] (45/70)

AUXILIARY FORCE—INDIA—*contd.* 39

MACHINE GUN CORPS.

Corps.	AUTHORISED STRENGTH.	ENROLLED STRENGTH OF—						Total all ranks. (excluding Cadet).
		ACTIVE.		RESERVE.		CADET.		
		O.	O. R.	O.	O. R.	O.	O. R.	
Machine Gun Corps.								
No. 1 (Coorg and Mysore) Company	120	5	34	..	61	100
No. 2 (Karachi) Company	120	3	25	..	24	52
No. 4 (Delhi) Company	170	4	49	..	49	102
No. 5 (Agra) Company	154	4	57	..	66	..	22	127
No. 6 (Bareilly) Company	50	..	12	..	16	28
No. 7 (Lucknow) Company	150	5	121	..	23	149
No. 8 (Bombay) Company	110	2	100	..	54	156
No. 9 (Cossipore) Company	152	5	51	..	93	149
No. 10 (Cossipore) Company	152	4	62	..	85	151
No. 11 (Allahabad) Company	60	2	42	..	5	49
No. 12 (Cawnpore) Company	60	4	83	..	33	120
Total	1,298	38	636	..	509	..	22	1,183
Royal Army Service Corps.								
No. 1 (Rangoon) Company	35
No. 2 (Calcutta)	35
No. 3 (Bombay)	35	2	31	33
No. 4 (Allahabad)	35	2	10	..	12	24
No. 5 (Cawnpore)	35	..	1	..	32	33
Total	175	4	42	..	44	90

'RETURN SHOWING THE ACTUAL STRENGTH OF THE ARMY AND ROYAL AIR FORCE IN INDIA INCLUDING PERSIAN GULF PORTS, THE E. P. FORCE, S. PERSIA AND S. E. PERSIA AND ADEN ON THE 1 June 1924' [212v] (46/70)

RAILWAY CORPS.

Corps.	AUTHORISED STRENGTH.	ENROLLED STRENGTH OF—						Super-mernary officers.	Total all ranks including cadets.
		ACTIVE.		RESERVE.		CADET.			
		O.	O. R.	O.	O. R.	O.	O. R.		
Railway Corps.									
East Indian Railway Regiment—									
1st Battalion	820	43	511	..	370	..	7	..	
2nd „	863	31	451	..	449	..	7	..	
3rd „	700	13	372	..	276	
The Eastern Bengal Railway Battalion ..	740	33	323	..	426	
The Great Indian Peninsula Railway Regiment—									
1st Battalion	1,284	46	707	..	509	
2nd „	716	21	326	..	277	..	7	..	
The Bombay, Baroda and Central India Railway Regiment—									
1st Battalion	600	33	263	..	222	..	24	..	
2nd „	860	34	414	..	399	..	25	..	(a) 817
The Burma Railways Battalion ..	1,007	23	571	..	430	1,057
The Bengal and North-Western Railway Regiment.	320	17	127	..	166	..	2	..	330
The North-Western Railway Regiment—									
1st Battalion	850	27	395	..	429	861
2nd „	650	19	159	..	269	666
The Oudh and Rohilkhand Railway Battalion.	575	16	94	..	869	639
The South Indian Railway Regiment ..	1,234	41	567	..	670	..	17	..	1,298
The Madras and Southern Mahratta Railway Regiment—									
1st Battalion	1,150	44	565	..	546	1,199
2nd „	720	20	343	..	352	770
The Bengal-Nagpur Railway Regiment—									
1st Battalion	860	30	479	..	338	868
2nd „	700	22	291	..	376	699
The Assam-Bengal Railway Battalion ..	440	19	194	..	183	466
Total	15,139	535	7,152	..	7,056	..	89	..	14,743

(a) Includes 26 men of Signal Corps, Ajmer Section.

'RETURN SHOWING THE ACTUAL STRENGTH OF THE ARMY AND ROYAL AIR FORCE IN INDIA INCLUDING PERSIAN GULF PORTS, THE E. P. FORCE, S. PERSIA AND S. E. PERSIA AND ADEN ON THE 1 June 1924' [213r] (47/70)

AUXILIARY FORCE—INDIA—concl'd. 41

INFANTRY.

CORPS.	AUTHORIZED STRENGTH.		ENROLLED STRENGTH OF—							
	Total all ranks.	O. R.	ACTIVE.		RESERVE.		CADET.		Supernumerary officers.	Total all ranks (excluding cadet.)
			O.	O. R.	O.	O. R.	O.	O. R.		
Infantry.										
The Madras Guards	640	15	350	..	134	..	57	499
The Nagpur Rifles	640	8	157	..	292	..	4	457
The Punjab Rifles	640	17	344	..	210	..	48	571
The Simla Rifles	350	10	120	..	115	..	104	25
The Calcutta Battalion	720	12	367	..	177	..	71	556
The Bangalore Battalion	670	15	162	..	175	..	74	352
The Allahabad Rifles	315	8	47	..	131	..	69	186
The Mussoorie Battalion	200	16	153	..	123	..	136	292
The Naini Tal Rifles	240	6	90	..	75	..	173	171
The Tenasserim Battalion	460	13	209	..	199	..	23	421
The Bombay Battalion	670	19	378	11	191	599
The Cawnpore Rifles	315	9	103	..	81	193
The Rangoon Battalion	1,182	27	389	..	420	..	38	836
The Nilgiri Malabar Battalion	650	20	446	..	185	..	25	651
The Sind Rifles	332	8	206	..	165	379
The Hyderabad Rifles	500	11	376	..	144	531
The Baluchistan Company	44	1	25	..	22	48
The Upper Burma Battalion	872	20	261	..	310	..	57	591
The Poona Rifles	402	11	209	..	155	..	13	375
The Calcutta Presidency Battalion	850	14	477	..	230	..	104	721
The East Coast Battalion	400	12	255	..	86	..	37	353
The Eastern Bengal Company	178	3	126	..	71	200
The Kolar Gold Field Battalion	720	27	253	..	317	..	60	597
The Calcutta Scottish	650	18	264	..	309	591
The Delhi Infantry	115	5	97	1	78	181
Total Infantry	12,755	325	5,864	12	4,395	..	1,093	10,596

HCL14FA

'RETURN SHOWING THE ACTUAL STRENGTH OF THE ARMY AND ROYAL AIR FORCE IN INDIA INCLUDING PERSIAN GULF PORTS, THE E. P. FORCE, S. PERSIA AND S. E. PERSIA AND ADEN ON THE 1 June 1924' [213v] (48/70)

42 INDIAN TERRITORIAL FORCE.

Unit.	SANCTIONED ESTABLISHMENT.			ENROLLED STRENGTH.		
	Officers.	Other ranks.	Total all ranks.	Officers.	Other ranks.	Total all ranks.
UNIVERSITY TRAINING CORPS.						
1st Bombay Battalion				18	583	601
2nd Calcutta Battalion				4	477	481
3rd Allahabad Battalion				13	320	333
4th Lahore Battalion				14	350	364
5th Madras Battalion				25	635	660
6th Burma Battalion				10	504	514
7th Patna Company				1	82	83
8th Benares Company				2	80	82
Total ..	174	4,140	4,314	87	3,081	3,168

27 for each battalion and 6 for each company.
637 159 165

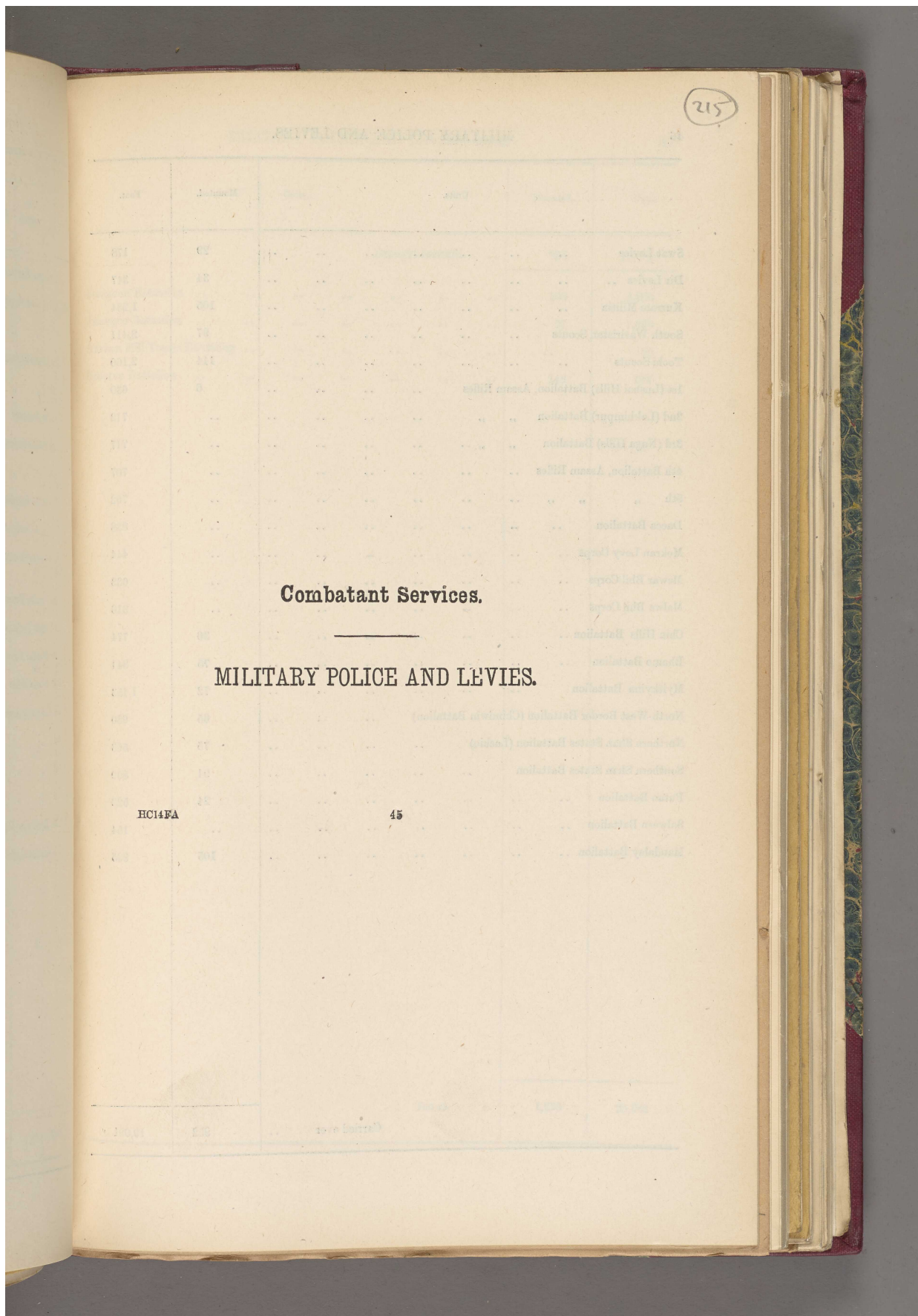
'RETURN SHOWING THE ACTUAL STRENGTH OF THE ARMY AND ROYAL AIR FORCE IN INDIA INCLUDING PERSIAN GULF PORTS, THE E. P. FORCE, S. PERSIA AND S. E. PERSIA AND ADEN ON THE 1 June 1924' [214r] (49/70)

INDIAN TERRITORIAL FORCE—*concl'd.* 43

Unit.	SANCTIONED ESTABLISHMENT.			ENROLLED STRENGTH.		
	Officers.	Other Ranks.	Total all Ranks.	Officers.	Other ranks.	Total all ranks.
INFANTRY BATTALIONS.						
11th Battalion, 2nd Bombay Pioneers ..				18	738	756
12th " " " " ..				12	414	426
11th " 7th Rajput Regiment ..				8	519	527
12th " 7th " " " ..				6	580	586
11th " 9th Jat Regiment ..				17	651	668
11th " 15th Punjab Regiment ..				21	654	675
11th " 14th " " " ..				8	647	655
11th " 17th Dogra Regiment ..				11	639	650
11th " 18th Royal Garhwal Rifles ..				7	459	466
11th " 4th Bombay Grenadiers ..	28	710	738	18	569	587
		for each Battalion.				
11th " 12th Frontier Force Regiment ..				19	710	729
11th " 1st Punjab Regiment ..				21	697	718
11th " 13th Frontier Force Rifles ..				15	504	519
11th " 20th Burma Rifles ..				17	597	614
11th " 3rd Madras Regiment ..				18	513	531
12th " 3rd " " (Malabar) ..				11	639	650
13th " 3rd " " " " ..				11	627	638
14th " 3rd " " " " ..				22	562	584
11th " 19th Hyderabad Regiment (Bengal)				8	613	621
11th " 5th Mahratta Light Infantry ..				6	278	284
Total ..	560	14,200	14,760	274	11,610	11,884

'RETURN SHOWING THE ACTUAL STRENGTH OF THE ARMY AND ROYAL AIR FORCE IN INDIA INCLUDING PERSIAN GULF PORTS, THE E. P. FORCE, S. PERSIA AND S. E. PERSIA AND ADEN ON THE 1 June 1924' [214v] (50/70)

'RETURN SHOWING THE ACTUAL STRENGTH OF THE ARMY AND ROYAL AIR FORCE IN INDIA INCLUDING PERSIAN GULF PORTS, THE E. P. FORCE, S. PERSIA AND S. E. PERSIA AND ADEN ON THE 1 June 1924' [215r] (51/70)



'RETURN SHOWING THE ACTUAL STRENGTH OF THE ARMY AND ROYAL AIR FORCE IN INDIA INCLUDING PERSIAN GULF PORTS, THE E. P. FORCE, S. PERSIA AND S. E. PERSIA AND ADEN ON THE 1 June 1924' [215v] (52/70)

46

MILITARY POLICE AND LEVIES.

Units.	Mounted.	Foot.
Swat Levies	29	178
Dir Levies	34	347
Kurram Militia	105	1,234
South Waziristan Scouts	97	2,411
Tochi Scouts	144	2,160
1st (Lushai Hills) Battalion, Assam Rifles	6	630
2nd (Lakhimpur) Battalion	712
3rd (Naga Hills) Battalion	717
4th Battalion, Assam Rifles	707
5th	702
Dacca Battalion	638
Mekran Levy Corps	444
Mewar Bhil Corps	633
Malwa Bhil Corps	316
Chin Hills Battalion	30	774
Bhamo Battalion	75	841
Myitkyina Battalion	72	1,453
North-West Border Battalion (Chindwin Battalion)	65	960
Northern Shan States Battalion (Lashio)	75	563
Southern Shan States Battalion	91	809
Putao Battalion	24	523
Salween Battalion	154
Mandalay Battalion	105	935
Carried over	952	19,081

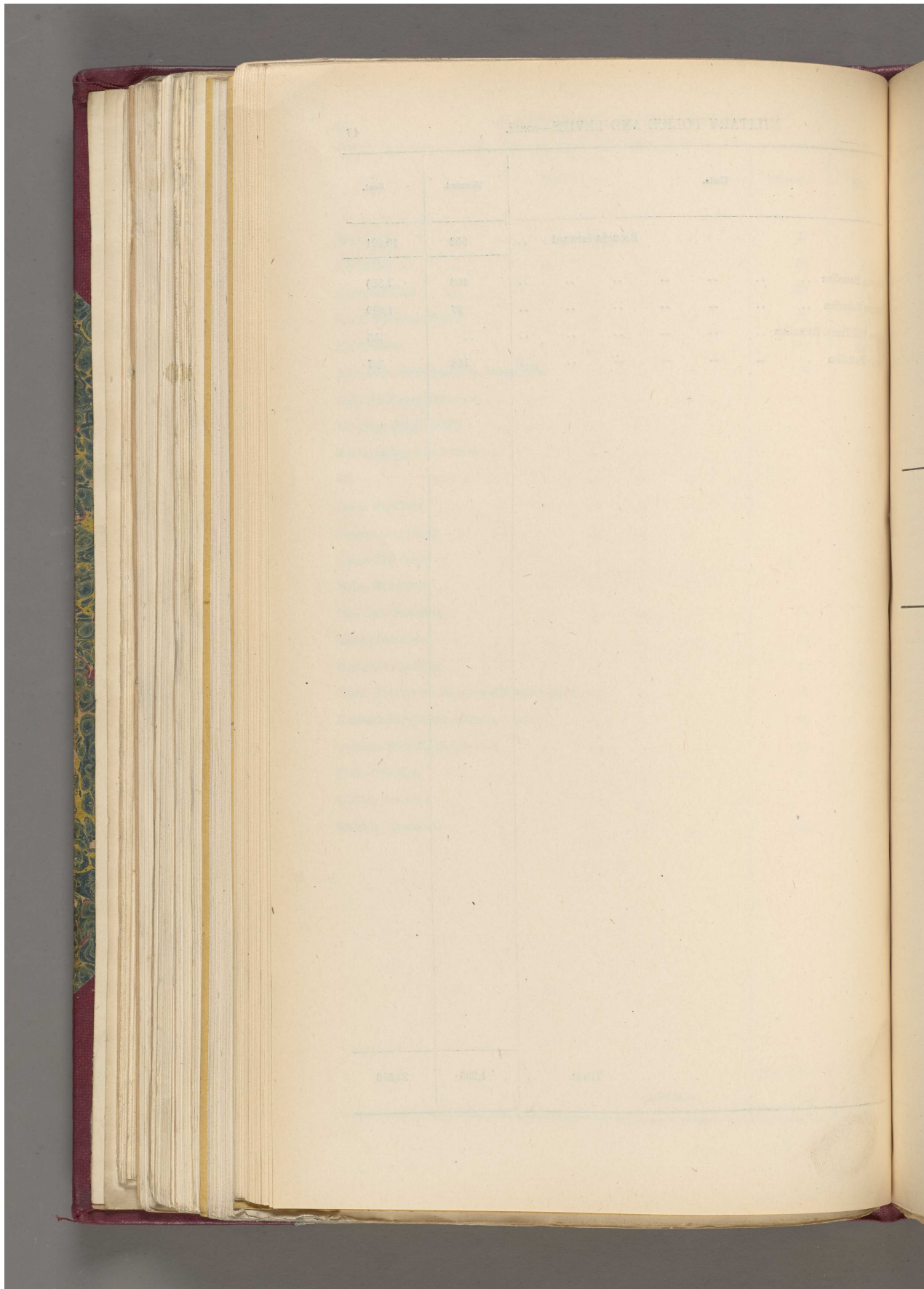
'RETURN SHOWING THE ACTUAL STRENGTH OF THE ARMY AND ROYAL AIR FORCE IN INDIA INCLUDING PERSIAN GULF PORTS, THE E. P. FORCE, S. PERSIA AND S. E. PERSIA AND ADEN ON THE 1 June 1924' [216r] (53/70)

47

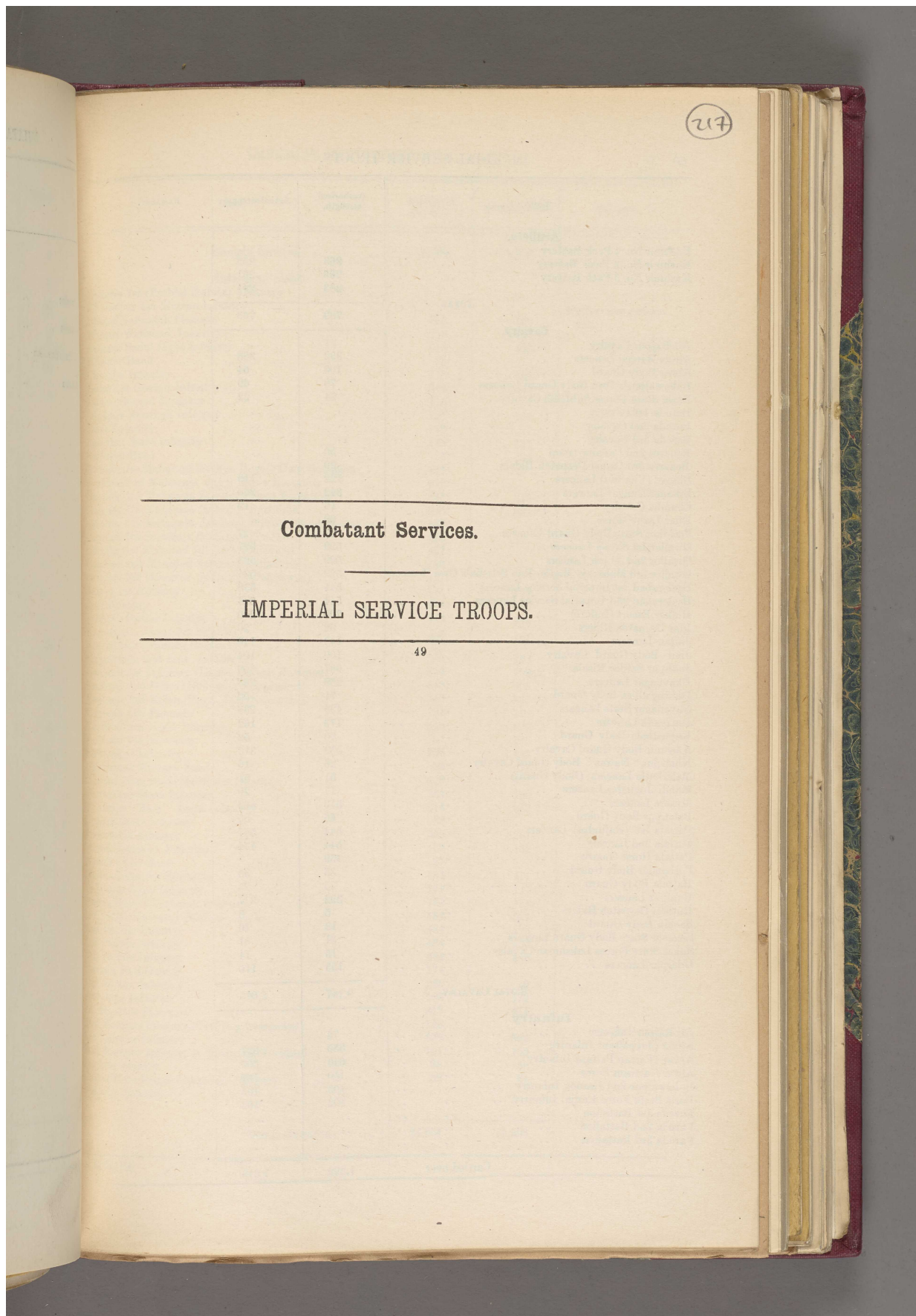
MILITARY POLICE AND LEVIES—contd.

Units.	Mounted.	Foot.
Brought forward ..	952	19,061
Rangoon Battalion ..	108	1,880
Toungoo Battalion ..	27	1,899
Arakan Hill Tracts Battalion	155
Reserve Battalion ..	148	587
TOTAL ..		
		1,235
		23,582

'RETURN SHOWING THE ACTUAL STRENGTH OF THE ARMY AND ROYAL AIR FORCE IN INDIA INCLUDING PERSIAN GULF PORTS, THE E. P. FORCE, S. PERSIA AND S. E. PERSIA AND ADEN ON THE 1 June 1924' [216v] (54/70)



'RETURN SHOWING THE ACTUAL STRENGTH OF THE ARMY AND ROYAL AIR FORCE IN INDIA
INCLUDING PERSIAN GULF PORTS, THE E. P. FORCE, S. PERSIA AND S. E. PERSIA AND
ADEN ON THE 1 June 1924' [217r] (55/70)



'RETURN SHOWING THE ACTUAL STRENGTH OF THE ARMY AND ROYAL AIR FORCE IN INDIA INCLUDING PERSIAN GULF PORTS, THE E. P. FORCE, S. PERSIA AND S. E. PERSIA AND ADEN ON THE 1 June 1924' [217v] (56/70)

50

IMPERIAL SERVICE TROOPS.

Units.	Authorised strength.	Actual strength.	REMARKS.
Artillery.			
Kashmir No. 1 Pack Battery	263	253	
Kashmir No. 2 Pack Battery	263	261	
Kashmir No. 3 Pack Battery	263	244	
TOTAL	789	763	
Cavalry.			
Ali-Rajpur Cavalry	34	..	
Alwar Mangal Lancers	392	388	
Alwar Body Guard	100	64	
Bahawalpur's Own Body Guard Lancers	70	69	
Baria State Forces Subbakh Cavalry	24	22	
Baroda 1st Cavalry	
Baroda 2nd Cavalry	
Baroda 3rd Cavalry	
Benares 2nd Cavalry troop	50	..	
Benares 3rd Camel Despatch Riders	20	..	
Bhopal (Victoria) Lancers	122	119	
Bikaner Dungar Lancers	342	260	
Chamba Cavalry	16	19	
Dhar Light Horse	69	..	
Faridkot State Body Guard Lancers	27	27	
Gwalior 1st Jayaji Lancers	529	527	
Gwalior 2nd Alijah Lancers	529	523	
Gwalior 3rd Maharaja Madho Rao Scindia's Own Lancers	529	524	
Hyderabad 1st Imperial Service Lancers	544	538	
Hyderabad 2nd Imperial Service Lancers	544	523	
Holkar Escort (Indere)	200	200	
Idar Despatch Riders	32	26	
Jaipur Lancers	143	140	
Jind Body Guard Cavalry	100	104	
Jodhpur Sardar Risala	667	666	
Bhavnagar Lancers	268	268	
Dhrangadhra Body Guard	71	56	
Navanagar State Lancers	423	238	
Junagadh Lancers	173	162	
Kapurthala Body Guard	30	52	
Kashmir Body Guard Cavalry	539	315	
Khairpur " Nawaz " Body Guard Cavalry	26	16	
Malerkotla Lancers (Body Guard)	51	51	
Mandi Joginder Lancers	17	20	
Mysore Lancers	516	462	
Palanpur Body Guard	66	50	
Patiala 1st (Rajindra) Lancers	544	567	
Patiala 2nd Lancers	544	434	
Patiala Horse Guards	139	..	
Porbandar Body Guard	35	35	
Rajpila Body Guard	25	25	
Rampur Lancers	392	317	
Rutlam Despatch Riders	5	5	
Sachin Body Guard	18	16	
Sirmoor State Body Guard Lancers	31	31	
Suket State Forces Lakshman Cavalry	16	14	
Udaipur Lancers	155	140	
TOTAL CAVALRY	9,167	8,013	
Infantry.			
Ali-Rajpur Infantry	72	..	
Alwar (Jeypaltan) Infantry	830	827	
Alwar (Partap Paltan) Infantry	640	505	
Alwar Garrison Force	150	107	
Bahawalpur 2nd Haroon Infantry	105	105	
Baria State Force Ranjid Infantry	102	102	
Baroda 1st Battalion	
Baroda 2nd Battalion	
Baroda 3rd Battalion	
Carried over	1,899	1,646	

'RETURN SHOWING THE ACTUAL STRENGTH OF THE ARMY AND ROYAL AIR FORCE IN INDIA INCLUDING PERSIAN GULF PORTS, THE E. P. FORCE, S. PERSIA AND S. E. PERSIA AND ADEN ON THE 1 June 1924' [218r] (57/70)

(218)

IMPERIAL SERVICE TROOPS—*contd.* 51

Actual strength.	Units.	Authorised strength.	Actual strength.	REMARKS.
	Brought forward	1,899	1,646	
	Infantry—<i>contd.</i>			
253	Benares 1st (Prabhu Narain) Infantry	Under reorganiza- tion.
261	Bharatpur 1st Muttoo Infantry	
244	Bhopal Sultanah Pioneers	812	777	
763	Bhopal Wajahad Infantry	113	111	
388	Bikaner Sadul Light Infantry	619	435	
64	Bikaner Band	35	..	
69	Chamba Infantry	290	201	
22	Datia 1st Govind Infantry	187	187	
..	Datia Govind Infantry	115	..	
..	Dholpur Narsingh Infantry	187	186	
..	Dhar Infantry	176	..	
..	Faridkot State Infantry	112	197	
..	Faridkot Band	35	34	
119	Gwalior 1st Maharani Sakhya Raya's Own Battalion	838	..	
269	Gwalior 2nd Maharaja Jayji Rao's Battalion	838	..	
19	Gwalior 3rd Maharaja Scindia's Own Battalion	838	816	
..	Gwalior 4th Maharaja Bahadur Battalion	838	824	
27	Gwalior 5th Maharaja Jankooji Rao's Pioneer Battalion	485	..	
827	Gwalior 7th Scindia's Battalion (Training)	512	..	
823	Gwalior 1st Mounted Infantry (Silladari)	457	..	
824	Gwalior 2nd Mounted Infantry (Silladari)	446	..	
538	Gwalior 3rd Mounted Infantry (Pagnawisi)	457	..	
823	Jaipur 1st Infantry	181	179	
200	Jind Infantry	484	503	
26	Jodhpur Sardar Infantry	443	444	
140	Kapurthala Jagat Jit Infantry	609	491	
104	Kapurthala Training Company			
669	Kapurthala 2nd Line Infantry	150	150	
268	Kashmir 1st Infantry (Ragu Partap Regiment)	840	799	
50	Kashmir 2nd Rifles (Bodyguard Regiment)	840	803	
238	Kashmir 3rd Rifles (Ragu Nath Regiment)	840	835	
162	Kashmir 4th Pioneers	791	749	
52	Kashmir 5th Light Infantry	840	822	
315	Kashmir 6th Pioneers	791	188	
16	Bhavnagar Infantry	250	245	
51	Bhavnagar Military Band	28	27	
20	Dhrangadhra State Makhwan Infantry	440	121	
462	Navanagar State Infantry	264	190	
50	Khairpur "Faiz" Light Infantry	216	213	
567	Loharu State Infantry	30	..	
494	Malerkotla Infantry	350	261	
..	Mandi Joginder Infantry	108	132	
35	Mandi State Band	27	..	
35	Nabha Infantry Regiment	484	471	
317	Palanpur Iqbal Infantry	171	117	
5	Panna State Chhatrasal Infantry	151	154	
16	1st Patiala Infantry (Rajindra Sikhs)	484	527	
31	2nd Patiala Infantry	484	498	
14	3rd Patiala Infantry	484	438	
140	4th Patiala Infantry	484	448	
8,013	Patiala Foot Guards	174	..	
..	Porbandar Infantry	260	9	
..	Rajpipla Infantry	108	122	
..	1st Rampur Pioneers	812	474	
..	2nd Rampur Pioneers (Training Company)	145	..	
..	1st Rampur Infantry	838	592	
..	2nd Rampur Infantry (1 Company Gurkhas)	151	153	
..	Sachin Infantry	88	50	
..	Suket State Forces Lakshman Infantry	52	64	
..	Tripura Infantry	
..	TOTAL INFANTRY	24,091	16,593	

MC14FA

1,646

'RETURN SHOWING THE ACTUAL STRENGTH OF THE ARMY AND ROYAL AIR FORCE IN INDIA INCLUDING PERSIAN GULF PORTS, THE E. P. FORCE, S. PERSIA AND S. E. PERSIA AND ADEN ON THE 1 June 1924' [218v] (58/70)

52

IMPERIAL SERVICE TROOPS—concl'd.

Units.	Authorised strength.	Actual strength.	REMARKS
Camel Corps.			
Bahawalpur 1st Sadiq Infantry	421	406	
Bikaner Ganga Risala	465	462	
Total ..	886	868	
Sappers.			
Dholpur Sappers (1 Section)	
Faridkot Sappers {	Headquarters	8	8
	(Field Company)
Malerkotla Sappers {	Sappers and Miners	129	129
	Headquarters	7	7
Sirmoor Sappers .. {	Sappers	205	181
	Headquarters	5	3
Tehri (Garhwal) Sappers .. {	No. 1 Company	142	140
	No. 2 Company	155	152
Band	38	38	
Tehri (Garhwal) Sappers	194	181	
Band	34	..	
Total ..	917	839	
Transport Corps.			
Bharatpur Transport Corps	246	218	
Gwalior Transport Corps	274	269	
Holkar Transport Corps, Indore	265	265	
Jaipur Pony Transport Corps	562	561	
Khairpur Camel Transport Corps	72	67	
Loharu State Camel Transport	26	26	
Mysore Bullock Transport Corps	247	226	
Total ..	1,692	1,632	

'RETURN SHOWING THE ACTUAL STRENGTH OF THE ARMY AND ROYAL AIR FORCE IN INDIA INCLUDING PERSIAN GULF PORTS, THE E. P. FORCE, S. PERSIA AND S. E. PERSIA AND ADEN ON THE 1 June 1924' [219r] (59/70)

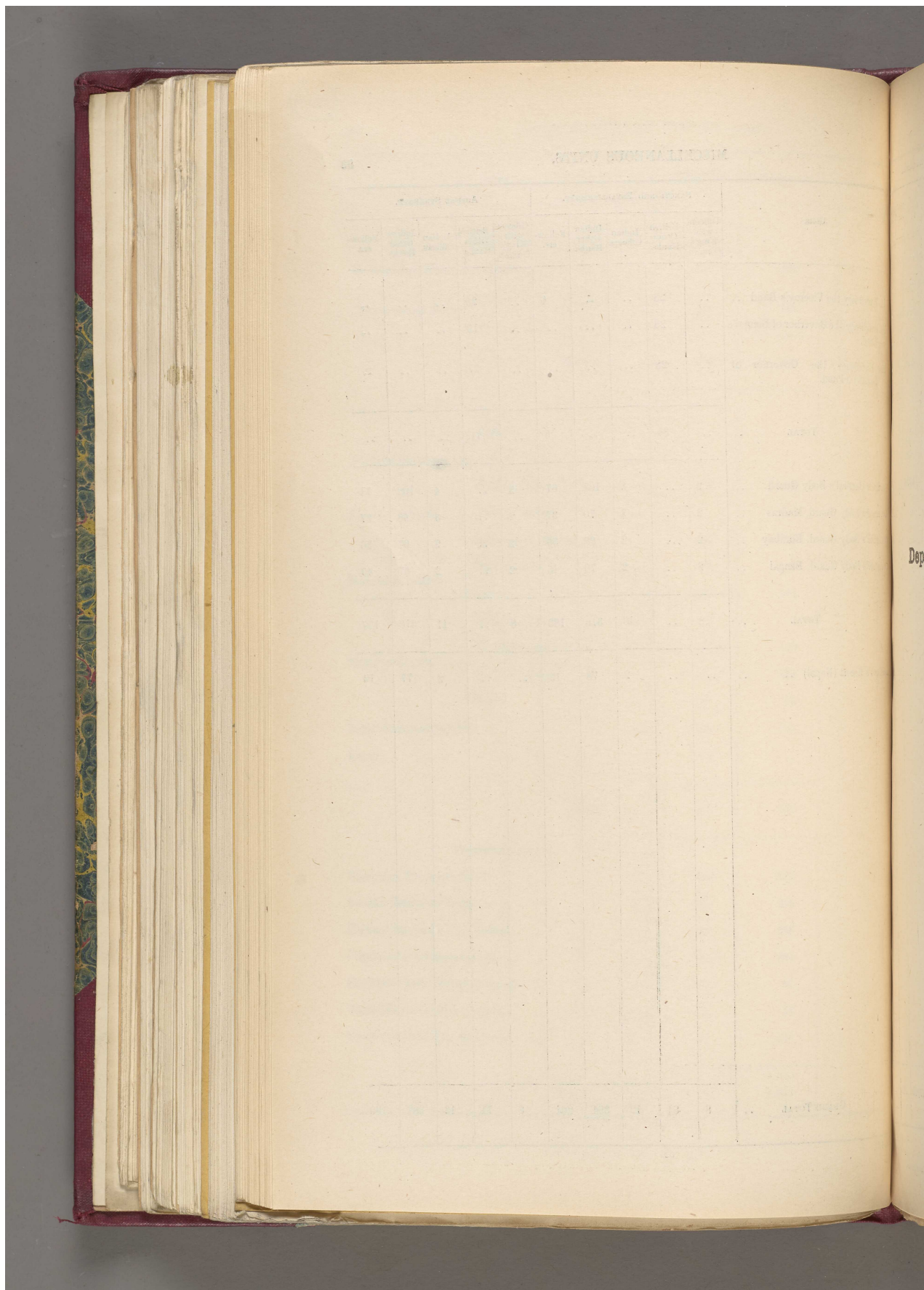
219

MISCELLANEOUS UNITS. 53

Actual strength.	Units.	SANCTIONED ESTABLISHMENT.					ACTUAL STRENGTH.				
		Officers with King's Commn.	British Other Ranks.	Indian Officers.	Indian Other Ranks.	Follow-ers.	Officers with King's Commn.	British Other Ranks.	Indian Officers.	Indian Other Ranks.	Follow-ers.
406											
462	His Excellency the Viceroy's Band	28	6	..	25
	His Excellency the Governor of Bengal's Band.	..	28	19
868	His Excellency the Governor of Bombay's Band.	..	28	27
	TOTAL	84	6	..	71
8	Governor General's Body Guard ..	2	..	3	108	67	2	..	4	108	71
	Governor's Body Guard, Madras ..	2	..	3	70	37	2	..	3	68	37
129	Governor's Body Guard, Bombay ..	2	..	2	68	36	2	..	2	67	36
7	Governor's Body Guard, Bengal ..	2	..	2	70	43	2	..	2	67	43
181	TOTAL ..	8	..	10	316	183	8	..	11	310	187
3											
140											
122	Resident's Escort (Nepal)	2	78	12	2	77	12
38											
181											
839											
213											
269											
265											
561											
67											
26											
226											
1,632	GRAND TOTAL ..	8	84	12	394	201	8	71	13	387	199

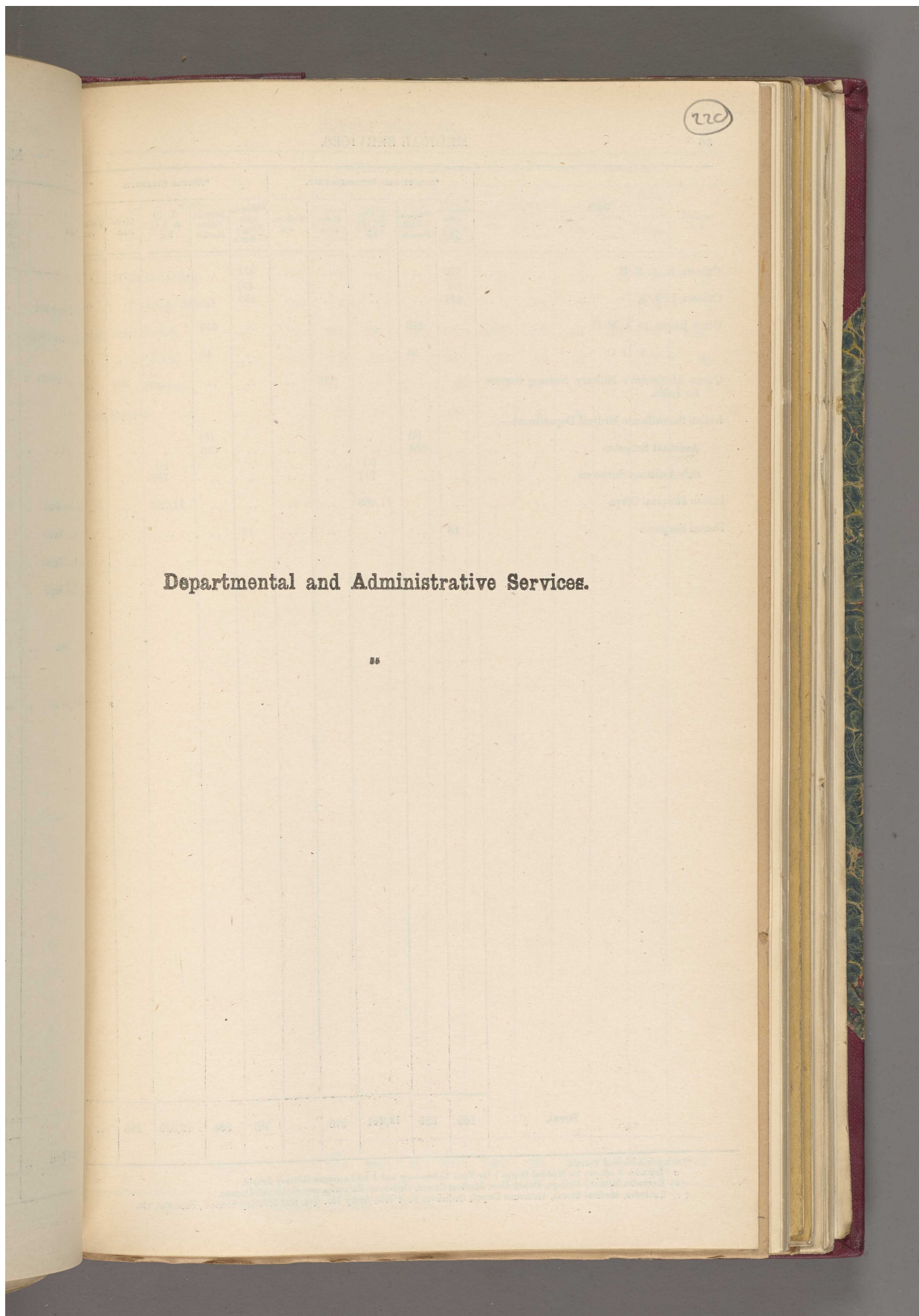
HCL4FA 52

'RETURN SHOWING THE ACTUAL STRENGTH OF THE ARMY AND ROYAL AIR FORCE IN INDIA INCLUDING PERSIAN GULF PORTS, THE E. P. FORCE, S. PERSIA AND S. E. PERSIA AND ADEN ON THE 1 June 1924' [219v] (60/70)



Depa

**'RETURN SHOWING THE ACTUAL STRENGTH OF THE ARMY AND ROYAL AIR FORCE IN INDIA
INCLUDING PERSIAN GULF PORTS, THE E. P. FORCE, S. PERSIA AND S. E. PERSIA AND
ADEN ON THE 1 June 1924' [220r] (61/70)**



'RETURN SHOWING THE ACTUAL STRENGTH OF THE ARMY AND ROYAL AIR FORCE IN INDIA INCLUDING PERSIAN GULF PORTS, THE E. P. FORCE, S. PERSIA AND S. E. PERSIA AND ADEN ON THE 1 June 1924' [220v] (62/70)

56

MEDICAL SERVICES.

Units.	*SANCTIONED ESTABLISHMENT.					*ACTUAL STRENGTH.				
	Officers with King's Commn.	British Other Ranks.	I. Oa. & I. O. Rs.	Civilians.	Followers.	Officers with King's Commn.	British Other Ranks.	I. Oa. & I. O. Rs.	Civilians.	Followers.
Officers, R. A. M. C.	320	314
Officers, I. M. S.	(a) 471	(a) 459
Other Ranks, R. A. M. C.	442	440
„ „ A. D. C.	36	18
Queen Alexandra's Military Nursing Service for India.	276	265	..
Indian Subordinate Medical Department—	..	(b)	(b)
Assistant Surgeons	351	430
Sub-Assistant Surgeons	(c) 741	(c) 783
Indian Hospital Corps	11,503	11,256
Dental Surgeons	18	18
TOTAL	809	829	12,244	276	..	791	888	12,039	265	..

*Includes Aden and Persia.
a Includes 4 officers for Medical Stores 1 for Food Laboratory and 1 for Lawrence Military School.
(b) Excludes Military College, Dehra Dun, Medical Stores, Ordnance Factories and Remount Depots.
(c) Excludes, Medical Stores, Remount Depot, Ordnance Factories, Army Hd. Qrs. and Military Schools, Sanawat, etc.

'RETURN SHOWING THE ACTUAL STRENGTH OF THE ARMY AND ROYAL AIR FORCE IN INDIA INCLUDING PERSIAN GULF PORTS, THE E. P. FORCE, S. PERSIA AND S. E. PERSIA AND ADEN ON THE 1 June 1924' [221r] (63/70)

SUPPLY SERVICES. (20)
57

Units.	SANCTIONED ESTABLISHMENT.					ACTUAL STRENGTH.				
	Officers with King's Commn.	British Other Ranks.	I. Os. & Indian Other Ranks.	CIVILI-ANS. Indian.	Follow-ers.	Officers with King's Commn.	British Other Ranks.	I. Os. & Indian Other Ranks.	CIVIL-ANS. Indian.	Follow-ers.
L. A. S. C. Record Office	4	4	..	45	12	7	4	..	48	12
" Training School	4	1	..	1	3	4	1	..	1	2
Supply units (India)	141	331	70	679	2,895	144	308	49	731	2,380
" " (Aden)	2	3	..	24	86	2	3	..	26	65
" " (Persia)	3	7	3	2
Leave Reserve	42	30	..	56	..	38	30	..	(b)	..
TOTAL	^(a) 193	369	70	808	3,003	195	346	42	809	2,461

(a) Includes 20 departmental officers.
(b) Included in figures shown against units.

'RETURN SHOWING THE ACTUAL STRENGTH OF THE ARMY AND ROYAL AIR FORCE IN INDIA INCLUDING PERSIAN GULF PORTS, THE E. P. FORCE, S. PERSIA AND S. E. PERSIA AND ADEN ON THE 1 June 1924' [221v] (64/70)

53

REMOUNT SERVICES.

Units.	SANCTIONED ESTABLISHMENT.					ACTUAL STRENGTH.				
	Officers with King's Commn.	British Other Ranks.	I. Os. & Indian Other Ranks.	Civilians Indian.	Follow-ers.	Officers with King's Commn.	British Other Ranks.	I. Os. & Indian Other Ranks.	Civilians	Follow-ers.
Remount Depots and Circles	12	27	204	3,883		12	26	204	3,871	
TOTAL	*12	27	204	3,883		12	26	204	3,871	

* Exclusive of 15 attached officers.

CANTONMENT ESTABLISHMENT.

Units.	Officers with King's Commn.	British Other Ranks.	I. Os. & Indian Other Ranks.	CIVILIANS.		Follow-ers.	Officers with King's Commn.	British Other Ranks.	I. Os. & Indian Other Ranks.	CIVILIANS.		Follow-ers.
				Euro-pean.	Indian.					Euro-pean.	Indian.	
Cantonments Department ..	42	..	4	..	4	..	40	..	4	..	4	..
TOTAL ..	(a) 42	..	4	..	4	..	40	..	4	..	4	..

(a) Includes 2 leave Reserve.

'RETURN SHOWING THE ACTUAL STRENGTH OF THE ARMY AND ROYAL AIR FORCE IN INDIA INCLUDING PERSIAN GULF PORTS, THE E. P. FORCE, S. PERSIA AND S. E. PERSIA AND ADEN ON THE 1 June 1924' [222r] (65/70)

VETERINARY SERVICES. 59

Units.	SANCTIONED ESTABLISHMENT.					ACTUAL STRENGTH.				
	Officers with King's Commn.	British Other Ranks.	I. Os. & Indian Other Ranks.	Civilians Indian.	Followers.	Officers with King's Commn.	British Other Ranks.	I. Os. & Indian Other Ranks.	Civilians Indian.	Followers.
Officers, R. A. V. C.	47	47
Other Ranks, I. V. C.	..	8	7
Other Ranks, Vety. Asstts. I. V. C. (India)	145	149*
Other Ranks, Vety. Clerks	40	43	..
Other Ranks, Vety. Clerks, Tempy.
Other Ranks, Veterinary Sections	593	567
Followers	88	76
Reserve	5
TOTAL	52	8	733	40	88	47	7	716	42	76

*Includes 4 Veterinary Assistants employed with the Remount Depots, under orders for discharge.
†Includes 2 temporary clerks sanctioned for six months and one under discharge.

'RETURN SHOWING THE ACTUAL STRENGTH OF THE ARMY AND ROYAL AIR FORCE IN INDIA INCLUDING PERSIAN GULF PORTS, THE E. P. FORCE, S. PERSIA AND S. E. PERSIA AND ADEN ON THE 1 June 1924' [222v] (66/70)

60

LABOUR CORPS AND DEPOTS.

Units.	SANCTIONED ESTABLISHMENT.				ACTUAL STRENGTH.			
	Officers with King's Commn.	British Other Ranks.	I. Os. & Indian Other Ranks.	Followers.	Officers with King's Commn.	British Other Ranks.	I. Os. & Indian Other Ranks.	Civilians.
112th Labour Corps	1	..	214	2
Lucknow Depot	1	..	1	5
TOTAL	2	..	215	7

FOLLOWERS' CENTRAL DEPOTS.

Units.	SANCTIONED ESTABLISHMENT.				ACTUAL STRENGTH.		
	Officers with King's Commn.	Indian Officers.	Indian Other Ranks.	Followers.	Officers with King's Commn.	Indian Officers.	Indian Other Ranks.
Overseas Depot	2	2	10	19	2	2	9
TOTAL	2	2	10	19	(a) 2	(a) 2	(a) 9

(a) Cost debitable wholly to Imperial Funds.

'RETURN SHOWING THE ACTUAL STRENGTH OF THE ARMY AND ROYAL AIR FORCE IN INDIA INCLUDING PERSIAN GULF PORTS, THE E. P. FORCE, S. PERSIA AND S. E. PERSIA AND ADEN ON THE 1 June 1924' [223r] (67/70)

MASTER GENERAL OF SUPPLY,
(Indian Ordnance Department.)

61 223

Units.	SANCTIONED ESTABLISHMENT.					ACTUAL STRENGTH.				
	Officers with King's Commission.	British Other Ranks.	Indian Other Ranks.	Civilians.		Officers with King's Commission.	British Other Ranks.	Indian Other Ranks.	Civilians.	
				Gazetted.	Non-Gazetted.				Gazetted.	Non-Gazetted.
Ordnance Factories	17	41	923	23	47	..	30	699
Ordnance Inspection Section Establishments.	11	20	28	1	65	13	17	28	1	64
TOTAL	28	20	28	42	994	36	64	28	31	763

MILITARY FARMS DEPARTMENT (GRASS).

Units.	SANCTIONED ESTABLISHMENT.			ACTUAL STRENGTH.		
	Officers with King's Commission.	Managers, Assistant Managers, British soldiers, Civilians and Engineers.	Indian Establishment.	Officers with King's Commission.	Managers, Assistant Managers, British soldiers, Civilians and Engineers.	Indian Establishment.
Military Grass Farms	17	61	286	17	57	275
TOTAL	17	61	286	17	57	275

DAIRY FARMS.

Units.	SANCTIONED ESTABLISHMENT.			ACTUAL STRENGTH.		
	Officers with King's Commission.	Managers, Assistant Managers, British soldiers, Civilians and Engineers.	Indian Establishment.	Officers with King's Commission.	Managers, Assistant Managers, British soldiers, Civilians and Engineers.	Indian Establishment.
Dairy Farms	3	31	278	3	30	239
TOTAL	3	31	278	3	30	239

'RETURN SHOWING THE ACTUAL STRENGTH OF THE ARMY AND ROYAL AIR FORCE IN INDIA INCLUDING PERSIAN GULF PORTS, THE E. P. FORCE, S. PERSIA AND S. E. PERSIA AND ADEN ON THE 1 June 1924' [223v] (68/70)

62 INDIAN ARMY ORDNANCE CORPS IN INDIA AND ADEN.

	SANCTIONED ESTABLISHMENTS.				ACTUAL STRENGTH.			
	Officers with King's Commission.	BRITISH OTHER RANKS.		Indian Other Ranks.	Officers with King's Commission.	BRITISH OTHER RANKS.		Indian Other Ranks.
		I. A. O. C.	R. A. O. C.			I. A. O. C.	R. A. O. C.	
Office of Director of Equipment and Ordnance Stores.	9	23	9	23
Office of the Deputy Director of Ordnance Services, Northern Command.	1	2	1	3
Office of the Deputy Director of Ordnance Services, Southern Command.	1	2	1	2
Office of Assistant Director of Ordnance Services, Eastern Command.
Office of Assistant Director of Ordnance Services, Western Command.
Office of the Deputy Assistant Directors of Ordnance Services, all Districts.	10	11	10	13
Clothing Factories and Depots and Ordnance Boot Depot.	17	48	..	179	19	52	..	118
Inspector of Ordnance Machinery	9	7
Rawalpindi Arsenal	10	79	9	312	9	80	8	251
Ferozepore Arsenal	10	61	8	240	6	60	8	210
Quetta Arsenal	4	29	5	175	4	29	5	138
Kirkee Arsenal	8	51	8	200	9	54	9	173
Allahabad Arsenal	8	54	8	208	7	51	10	183
Madras Arsenal	4	28	4	152	5	29	6	117
Rangoon Arsenal	4	17	4	90	3	16	4	63
Fort William Ordnance Depot	2	15	..	70	2	15	..	44
Karachi Depot	2	13	..	50	1	15	..	41
Bombay Depot	2	9	..	20	1	10	..	20
Agra Depot	2	13	..	50	1	13	..	49
Waziristan District	1	8	..	18	1	2	..	13
Aden Ordnance Depot	1	11	2	..	1	9	2	..
Inspection Section G. S. charge	5	10	5	12
Leave	20	46	25	41
TOTAL ..	130	533	48	1,764	127	529	(a) 52	1,544

(a) The number of Armament Artificers (R. A. O. C.) authorised for coast defences and reserve have been excluded, 73 Armament British units and serving with Factories and Inspection Sections have been excluded.

'RETURN SHOWING THE ACTUAL STRENGTH OF THE ARMY AND ROYAL AIR FORCE IN INDIA INCLUDING PERSIAN GULF PORTS, THE E. P. FORCE, S. PERSIA AND S. E. PERSIA AND ADEN ON THE 1 June 1924' [224r] (69/70)

EMBARKATION AND RAILWAY TRANSPORT STAFF. 63

	SANCTIONED ESTABLISHMENT.					ACTUAL STRENGTH.				
	Officers with King's Commission.	British Other Ranks.	Indian Officers and Other Ranks.	Civilians.	Followers.	Officers with King's Commission.	British Other Ranks.	Indian Officers and Other Ranks.	Civilians.	Followers.
Embarkation Staff	4	12	16	9	9	4	12	16	9	9
Railway Transport Staff ..	1	8	..	14	24	1	8	..	14	24
TOTAL ..	5	20	16	23	33	5	20	16	23	33

MILITARY ENGINEER SERVICES.

Units.	SANCTIONED ESTABLISHMENT.					ACTUAL STRENGTH.				
	Officers with King's Commission.	British Other Ranks.	Indian Officers and Other Ranks.	Civilians.	Followers.	Officers with King's Commission.	British Other Ranks.	Indian Officers and Other Ranks.	Civilians.	Followers.
Military Works Services	235	257	..	787	497	170	212	2	1,889	1,139
TOTAL ..	(a) 235	257	..	787	497	*170	212	2	(b) *1,889	(b) *1,139

ARMY EDUCATION SERVICES.

Units.	SANCTIONED ESTABLISHMENT.					ACTUAL STRENGTH.				
	Officers with King's Commission.	British Other Ranks.	Indian Officers and Other Ranks.	Civilians.	Followers.	Officers with King's Commission.	British Other Ranks.	Indian Officers and Other Ranks.	Civilians.	Followers.
Headquarters	1	3	1	3	..
Commands	4	8	4	4	8	4
Districts	11	14	14	11	14
Pl. & Det. Schools— British Troops ..	31	124	..	149	..	27	121	..	23	..
Pl. & Det. Schools— Indian Troops	456	48	496	48	..
British Army School of Education	10	3	..	58	..	10	3	..	58	..
Indian Army School of Education	5	..	14	43	..	5	..	14	43	..
Reference School	14	..	170	14	..	170	..
College of Wales Royal India Military College.	3	1	1	54	..	3	1	1	54	..
St. George's Schools	1	..	22	36	Not yet opened.
Board of Examiners ..	1	5	..	1	5	..
.. ..	1	2	6	4	..	1	2	3	2	..
TOTAL ..	67	166	558	570	..	62	163	519	406	..

Includes six Deputy Commissioners and Assistant Commissioners of the Barrack Department.
Includes works charged, etc., establishment.
Includes establishment paid from temporary establishment grant.

'RETURN SHOWING THE ACTUAL STRENGTH OF THE ARMY AND ROYAL AIR FORCE IN INDIA INCLUDING PERSIAN GULF PORTS, THE E. P. FORCE, S. PERSIA AND S. E. PERSIA AND ADEN ON THE 1 June 1924' [224v] (70/70)

64 ARMY HEADQUARTERS, COMMANDS, DISTRICTS AND BRIGADES, ETC.

Units.	SANCTIONED ESTABLISHMENT.					ACTUAL STRENGTH.			
	Officers with King's Commission.	British Other Ranks.	I. Os. & I. O. Rs.	Civilians.	Followers.	Officers with King's Commission.	British Other Ranks.	I. Os. & I. O. Rs.	Civilians.
Officers of the General and Administrative Staffs of Army Headquarters, Commands, Districts, Brigades, etc. (excluding Officers of Medical and Indian Army Ordnance Services).	*442	*143
Do. Aden ..	4	4
Total ..	446	447
Clerical and Menial Establishment of Army Headquarters—									
Military Secretary's Branch	30	24	..	3	..	27
General Staff Branch	96	61	..	20	1	74
Adjutant General's Branch	180	113	..	21	..	157
Quartermaster General's Branch	196	97	..	33	..	156
Engineer-in-Chief Branch	69	33	..	1	..	64
M. G. S. Branch	109	45	..	13	..	94
TOTAL	(a) 680	373	..	(a) 91	1	558

(a) Includes Departmental Officers, Warrant Officers and British Other Ranks.
(b) Includes Permanent Staff of Auxiliary and Territorial Force.

HC14FA-140-S-7-24-GIPS