

This PDF was generated on 09/10/2022 from online resources of  
the **Qatar Digital Library**

The online record can be viewed at:

[http://www.qdl.qa/en/archive/81055/vdc\\_100000001435.0x0002f9](http://www.qdl.qa/en/archive/81055/vdc_100000001435.0x0002f9)

It contains extra information, high resolution zoomable views and transcriptions.

**‘RETURN SHOWING THE ACTUAL STRENGTH OF THE ARMY AND ROYAL  
AIR FORCE IN INDIA INCLUDING PERSIAN GULF PORTS, THE E.P. FORCE, S.  
PERSIA AND S.E. PERSIA AND ADEN ON THE 1ST NOVEMBER 1922’**

<b>Holding Institution</b>	British Library: India Office Records and Private Papers
<b>Reference</b>	IOR/L/MIL/17/5/1276
<b>Date(s)</b>	1 Nov 1922 (CE, Gregorian)
<b>Written in</b>	English in Latin
<b>Extent and Format</b>	1 file (39 folios)
<b>Copyright for document</b>	<a href="#">Open Government Licence</a>



**About this record**

This file contains strength returns from units of the British Army, the British Indian Army, and the Royal Air Force in India, including forces deployed in Persia [Iran], the Persian Gulf ports, and Aden as of 1 November 1922. The strength returns were issued by the Adjutant-General in India. They detail the number of personnel currently serving with military branches and individual units, grouped under the following categories:

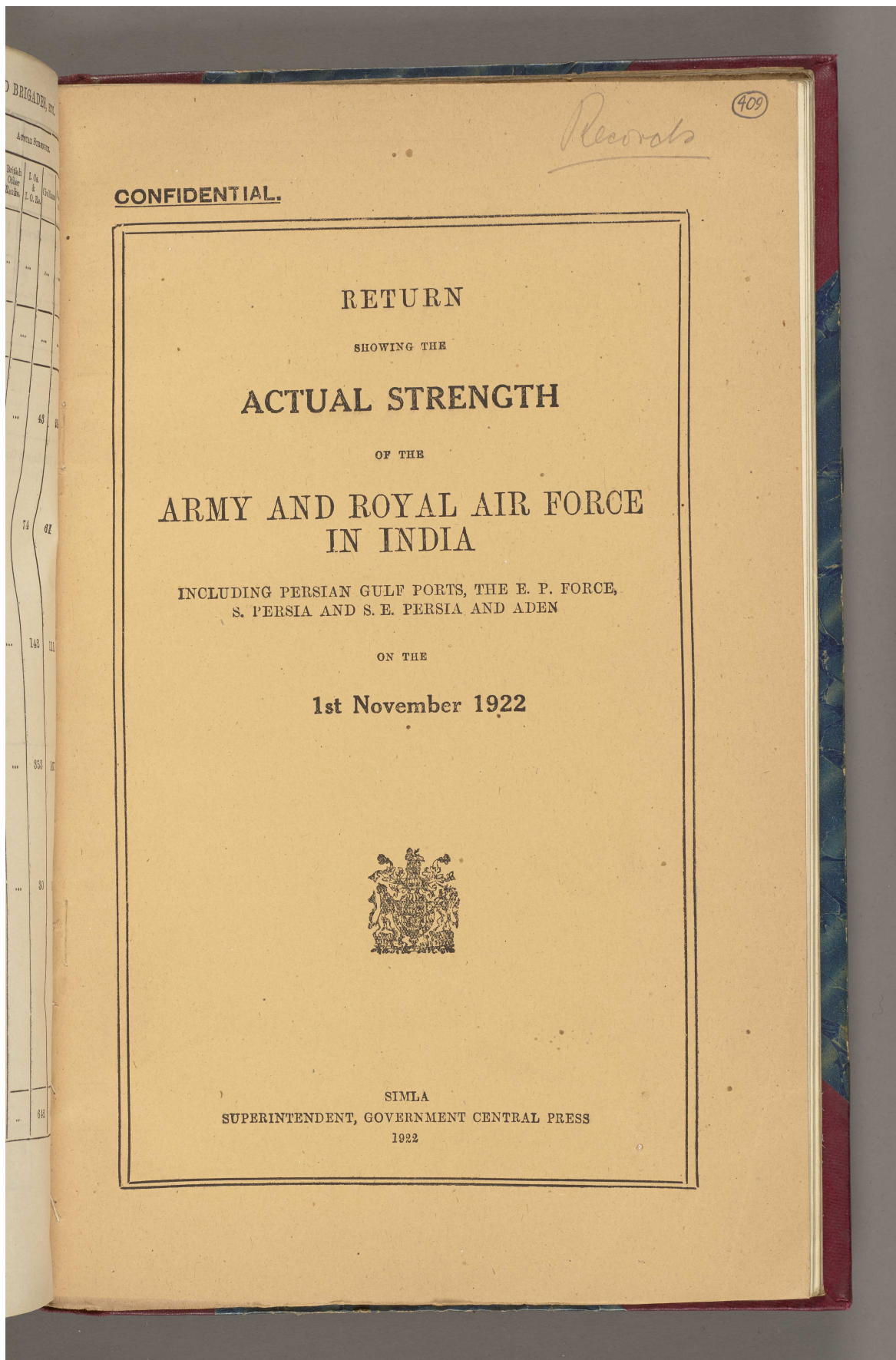
- ‘Regular Forces’
- ‘Indian Army Reserve’
- ‘Auxiliary Force-India’
- ‘Military Police and Levies’
- ‘Imperial Service Troops’
- ‘Departmental and Administrative Services’.

Some returns are further divided into sub-categories such as: sanctioned and actual strength; British and Indian officers, other ranks, and followers; 'Active', 'Reserve', and 'Cadet' personnel; 'Class I' and 'Class II' personnel; and 'Mounted' and 'Foot' personnel.

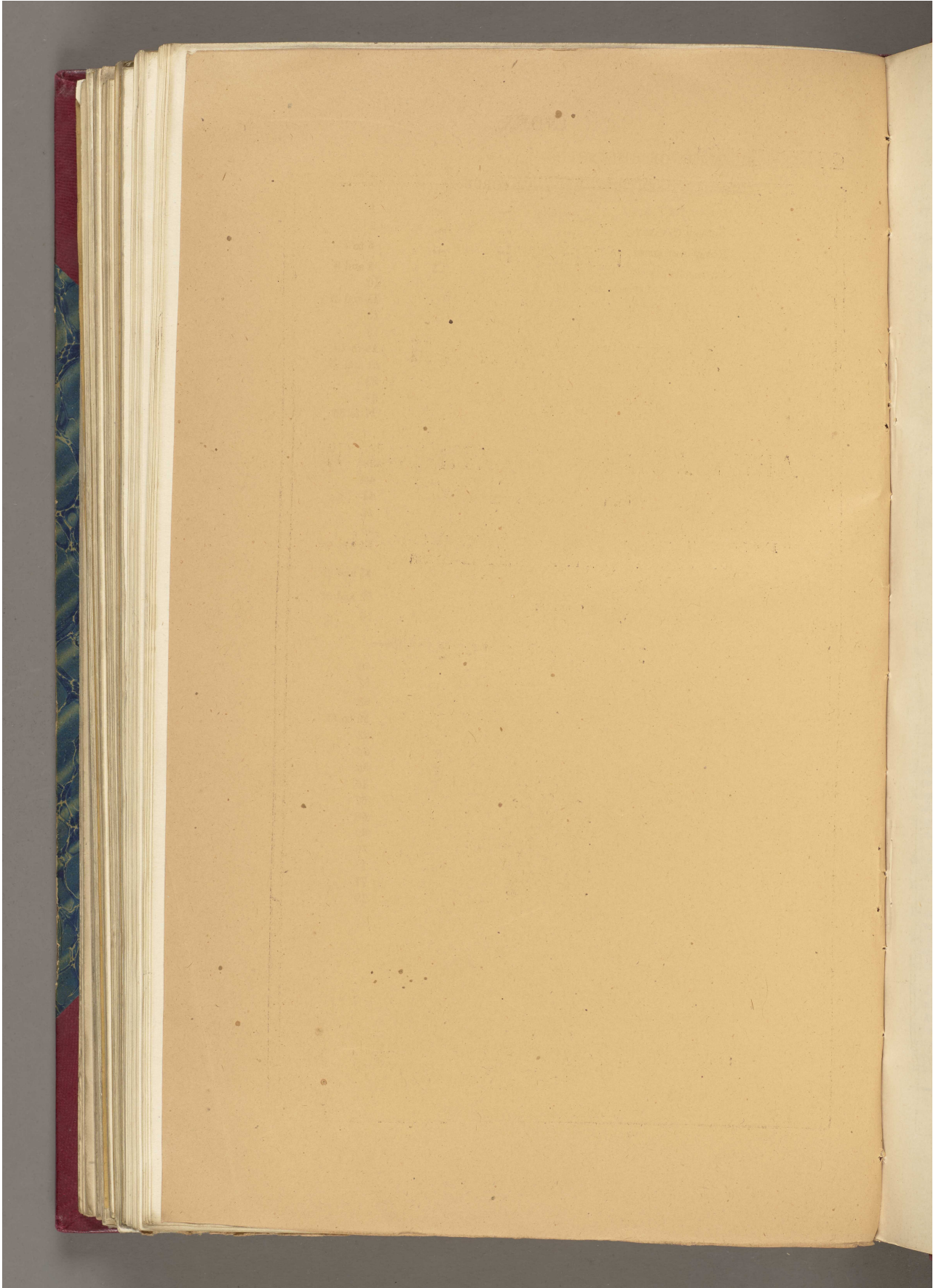
The file was printed in Simla [Shimla] and is marked 'SUPERINTENDENT, GOVERNMENT CENTRAL PRESS 1922'.

This file is bound in a volume together with IOR/L/MIL/17/5/1266-1275, and IOR/L/MIL/17/5/1277.

**'RETURN SHOWING THE ACTUAL STRENGTH OF THE ARMY AND ROYAL AIR FORCE IN INDIA INCLUDING PERSIAN GULF PORTS, THE E.P. FORCE, S. PERSIA AND S.E. PERSIA AND ADEN ON THE 1ST NOVEMBER 1922' [409r] (1/78)**



**'RETURN SHOWING THE ACTUAL STRENGTH OF THE ARMY AND ROYAL AIR FORCE IN INDIA  
INCLUDING PERSIAN GULF PORTS, THE E.P. FORCE, S. PERSIA AND S.E. PERSIA AND ADEN  
ON THE 1ST NOVEMBER 1922' [409v] (2/78)**



'RETURN SHOWING THE ACTUAL STRENGTH OF THE ARMY AND ROYAL AIR FORCE IN INDIA INCLUDING PERSIAN GULF PORTS, THE E.P. FORCE, S. PERSIA AND S.E. PERSIA AND ADEN ON THE 1ST NOVEMBER 1922' [410r] (3/78)

410

INDEX.

SUMMARY OF STRENGTH—

COMBATANT SERVICES—REGULAR FORCES.

ROYAL AIR FORCE	...	...	...	1
BRITISH CAVALRY	...	...	...	2
ROYAL ARTILLERY	...	...	...	3 to 7
BRITISH INFANTRY	...	...	...	8 and 9
MACHINE GUN CORPS AND TANK CORPS	...	...	...	10
INDIAN CAVALRY	...	...	...	11 and 12
ENGINEERS	...	...	...	13
SIGNALS	...	...	...	13
INDIAN INFANTRY	...	...	...	14 to 20
PIONEER BATTALIONS	...	...	...	21 and 22
UNITS SERVING IN PERSIA AND ADEN	...	...	...	23
RESERVE BRITISH	...	...	...	24
INDIAN ARMY RESERVE	...	...	...	27 to 36

AUXILIARY FORCE—INDIA.

ARTILLERY AND ENGINEERS	...	...	...	39
CAVALRY	...	...	...	40
MACHINE GUN AND ROYAL ARMY SERVICE CORPS	...	...	...	41
RAILWAY CORPS	...	...	...	42
INFANTRY	...	...	...	43
INDIAN TERRITORIAL FORCE	...	...	...	44 and 45

MILITARY POLICE AND LEVIES	...	...	...	48 and 49
----------------------------	-----	-----	-----	-----------

IMPERIAL SERVICE TROOPS	...	...	...	52 and 53
-------------------------	-----	-----	-----	-----------

MISCELLANEOUS UNITS	...	...	...	54
---------------------	-----	-----	-----	----

DEPARTMENTAL AND ADMINISTRATIVE SERVICES—

MEDICAL SERVICES	...	...	...	56
SUPPLY SERVICES	...	...	...	57
MECHANICAL TRANSPORT	...	...	...	58
ANIMAL TRANSPORT	...	...	...	59 to 62
REMOUNT SERVICES	...	...	...	63
VETERINARY SERVICES	...	...	...	64
LABOUR CORPS AND DEPOTS	...	...	...	65
FOLLOWERS' CENTRAL DEPOTS	...	...	...	66
CANTONMENT ESTABLISHMENT	...	...	...	67
EMBARKATION AND RAILWAY STAFF	...	...	...	68
MILITARY FARMS AND DAIRY FARMS	...	...	...	69
ORDNANCE	...	...	...	70
MILITARY WORKS SERVICES	...	...	...	71
RAILWAY CONSTRUCTION COMPANIES	...	...	...	71
HEADQUARTERS, COMMANDS, DISTRICTS AND BRIGADES	...	...	...	72

CISAF

**'RETURN SHOWING THE ACTUAL STRENGTH OF THE ARMY AND ROYAL AIR FORCE IN INDIA  
INCLUDING PERSIAN GULF PORTS, THE E.P. FORCE, S. PERSIA AND S.E. PERSIA AND ADEN  
ON THE 1ST NOVEMBER 1922' [410v] (4/78)**

The page contains a large table with multiple columns and rows, which is mostly illegible due to fading and bleed-through from the reverse side. The right margin contains a list of military categories and units, including:

- Com
- Adm
- COB
- Briti
- Artil
- Briti
- Tan
- Indi
- Engi
- Signa
- Indiar
- "
- Pione
- "
- Total
- British
- Units and Indian seas
- Depots servi
- Indian earn
- Trainin
- Infan
- on In
- Depots
- Overs
- Pioneers
- Overs
- Training
- Overs
- Men (S from
- Men (S
- Grand T
- Persia
- At
- Military
- Imperia
- Miscella
- Indians

**'RETURN SHOWING THE ACTUAL STRENGTH OF THE ARMY AND ROYAL AIR FORCE IN INDIA INCLUDING PERSIAN GULF PORTS, THE E.P. FORCE, S. PERSIA AND S.E. PERSIA AND ADEN ON THE 1ST NOVEMBER 1922' [411r] (5/78)**

411

SUMMARY OF STRENGTH.

Units.	SANCTIONED ESTABLISHMENT.					ACTUAL STRENGTH.				
	British Officers.	British Other Ranks.	Indian Officers.	Indian Other Ranks.	Fol- lowers.	British Officers.	British Other Ranks.	Indian Officers.	Indian Other Ranks.	Fol- lowers.
<b>ROYAL AIR FORCE.</b>										
Combatant ...	213	1,618	...	(f) 81	1,198	180	1,572	...	(g) 104	903
Administrative ...	10	20	...	...	...	7	17	...	...	...
Total ...	223	1,638	...	81	1,198	187	1,589	...	104	903
<b>COMBATANT SERVICES.</b>										
REGULAR FORCES.										
British Cavalry ...	216	4,584	...	...	2,176	200	5,232	...	...	1,725
Artillery ...	600	10,846	207	12,714	5,627	591	11,231	209	12,091	3,372
British Infantry ...	1,260	45,540	90	1,935	3,240	1,236	40,602	84	1,724	2,503
Tank Corps ...	60	930	...	...	228	55	860	...	...	147
Indian Cavalry ...	294	...	378	10,584	4,326	435	...	(b) 376	10,546	4,267
Engineers ...	109	241	153	7,722	667	109	208	155	7,429	609
Signals ...	152	2,044	55	3,256	757	121	1,982	53	3,066	611
Indian Infantry ...	1,400	...	2,280	95,620	5,700	1,813	...	2,180	91,682	5,408
" " (Waziristan) ...	...	...	...	...	...	95	...	...	...	...
Pioneer Battalions ...	135	...	177	8,463	447	154	...	161	7,290	365
" " (Waziristan) ...	...	...	...	...	...	19	...	...	...	...
Total Combatant Services, Regular Forces.	4,226	64,185	3,340	140,234	23,168	4,628	60,255	3,218	133,628	19,007
British Reserve (Signals) ...	...	920	...	...	...	...	*238	...	...	...
INDIAN ARMY RESERVE ...	...	...	...	15,144	...	...	...	...	12,097	...
Units serving in Persia and Aden and their training companies.	82	1,532	65	2,765	289	105	1,276	76	3,213	269
Indian Cavalry returned from Overseas on Imperial charge.	...	...	...	...	...	...	...	...	...	...
Depôts of Indian Cavalry Regiment, serving Overseas.	2	...	3	87	40	4	...	4	90	44
Indian Infantry returned from and earmarked for Overseas.	...	...	...	...	...	25	...	17	788	47
Training Companies affiliated to Infantry Units serving Overseas on Imperial charge.	26	...	26	1,924	104	24	...	23	1,646	95
Depôts of Infantry Units serving Overseas.	2	...	3	154	10	2	...	3	121	8
Pioneers earmarked for service Overseas.	...	...	...	...	...	16	...	15	705	33
Training Companies of Pioneers Overseas.	4	...	4	296	16	7	...	9	404	16
Men (Sappers and Miners) returned from and maintained for Overseas.	...	...	...	...	...	...	...	1	43	5
Men (Signals) " "	...	...	...	...	...	3	31	1	52	6
Grand Total in India (including Persia and Aden).	4,342	66,637	3,441	160,664	23,627	5,014	61,562	3,367	152,987	19,535
AUXILIARY FORCE IN INDIA ...	...	...	...	...	...	1,168	33,663	...	...	...
Military Police and Levies ...	...	...	...	...	...	...	...	...	...	...
Imperial Service Troops ...	...	...	...	22,906	...	...	...	...	26,032	...
Miscellaneous Units ...	8	92	12	404	197	8	79	12	16,768	...
Indian Territorial Force ...	...	...	...	...	...	14	...	150	403	197
	...	...	...	...	...	...	...	...	13,117	...

\* These are included in strength of British Units.  
 (a) Includes 2 B. Os., 2 B. O. Rs., 2 I. Os., 102 I. O. Rs. and 16 Followers debitable to Imperial Government.  
 (b) Includes 4 I. Os. and 43 I. O. Rs. on demobilization leave.  
 (c) Excludes 33 B. O. Rs. of Cavalry, Artillery and Infantry attached to Signals but borne on the strength of their units.  
 (d) Includes 4 I. Os. and 120 I. O. Rs. on demobilization leave.  
 (e) Includes 1 I. O. and 9 I. O. Rs. on demobilization leave.  
 (f) Includes 79 civilian clerks.  
 (g) " " 73 " " "

'RETURN SHOWING THE ACTUAL STRENGTH OF THE ARMY AND ROYAL AIR FORCE IN INDIA INCLUDING PERSIAN GULF PORTS, THE E.P. FORCE, S. PERSIA AND S.E. PERSIA AND ADEN ON THE 1ST NOVEMBER 1922' [411v] (6/78)

ii

SUMMARY OF STRENGTH—contd.

Unit.	SANCTIONED ESTABLISHMENT.						ACTUAL STRENGTH.					
	British Officers.	British Other Ranks.	Indian Officers.	I. Os. & Indian Other Ranks.	Civilians.	Fol-lowers.	British Officers.	British Other Ranks.	Indian Officers.	I. Os. & Indian Other Ranks.	Civilians.	Fol-lowers.
<b>DEPARTMENTAL AND ADMINISTRATIVE SERVICES.</b>												
Medical Services ...	(a) 846	891	...	18,056	276	...	773	872	...	13,735	268	...
Supply Services ...	209	445	...	73	923	5,061	255	551	...	2	1,189	4,268
Mechanical Transport ...	150	842	...	2,401	624	3,126*	152	721	...	2,866	436	2,916*
Mule Corps Units and Depôts	46	76	...	10,599	94	2,102	62	75	...	12,011	212	2,028
Camel Corps ...	16	...	...	2,256	32	3,140	22	...	...	3,139	50	2,804
Bullock Corps ...	...	...	...	33	...	528	...	...	...	36	...	602
Miscellaneous Units (Animal Transport).	1	...	...	298	1	15	4	11	...	1,071	9	149
Mule Corps (Aden) ...	1	2	...	154	1	26	1	2	...	154	1	25
Remount Services ...	12	27	...	204	4	4,634	12	27	...	202	252	4,081
Veterinary Services ...	55	12	...	1,643	48	121	52	13	...	939	50	84
Labour Corps and Depôts ...	...	...	...	...	...	...	10	...	...	2,856	...	185
Followers' Central Depôts ...	...	...	...	...	...	...	8	...	...	32	...	197
Cantonment Establishment ...	48	...	...	2	187	286	45	...	...	2	187	283
Embarkation and Railway Staff.	21	53	...	...	28	...	22	67	...	...	30	...
Military Grass Farms ...	15	...	...	...	304	...	13	...	...	...	302	...
Dairy Farms ...	6	...	...	...	224	...	6	...	...	...	215	...
Stores Sections and Arsenals	143	911	...	1,654	...	...	124	688	...	1,506	...	...
All ranks employed under the Director-General of Ordnance.	48	101	...	30	909	...	41	85	...	30	793	...
Military Works Services ...	188	315	...	...	787	536	149	221	...	1	1,989	1,282
Railway Construction Company	...	...	...	...	...	...	1	...	...	230	...	8
Staff, etc. ...	480	...	...	...	...	...	478	...	...	...	...	...
Clerical and Menial Establishments of Army Headquarters	...	...	...	...	(b) 765	376	...	(b) 110	...	...	635	388
<b>Total</b> ...	<b>2,285</b>	<b>3,675</b>	<b>...</b>	<b>32,493</b>	<b>5,207</b>	<b>19,951</b>	<b>2,230</b>	<b>3,443</b>	<b>...</b>	<b>38,812</b>	<b>6,618</b>	<b>19,303</b>
Mule Driver Reservists ...	...	...	...	500	...	...	...	...	...	376	...	...
<b>Grand Total of Army in India (including Persian Gulf Ports, Persia and Aden) excluding Royal Air Force.</b>	<b>6,635</b>	<b>70,404</b>	<b>3,453</b>	<b>216,967</b>	<b>5,207</b>	<b>43,775</b>	<b>8,484</b>	<b>98,747</b>	<b>3,529</b>	<b>243,495</b>	<b>6,618</b>	<b>39,035</b>

(a) Includes Dental Surgeons.  
(b) Includes Departmental Officers, Warrant Officers and British Other Ranks.  
\* Includes Indian Artificers.



**'RETURN SHOWING THE ACTUAL STRENGTH OF THE ARMY AND ROYAL AIR FORCE IN INDIA INCLUDING PERSIAN GULF PORTS, THE E.P. FORCE, S. PERSIA AND S.E. PERSIA AND ADEN ON THE 1ST NOVEMBER 1922' [412r] (7/78)**

(412)

**ROYAL AIR FORCE.** 1

Units.	SANCTIONED ESTABLISHMENT.					ACTUAL STRENGTH.				
	British Officers	British other ranks.	Indian officers and Indian other ranks.	Civilian clerks, (British and Indian).	Fol-lowers (includ-ing arti-ficers).	British Officers.	British other ranks.	Indian officers and Indian other ranks.	Civilian clerks (British and Indian.)	Fol-lowers (includ-ing arti-ficers).
<b>ROYAL AIR FORCE.</b>										
<b>Combatants.</b>										
Headquarters, R. A. F. ...	18	153	...	33	36	12	28	...	34	34
Aircraft Park ...	9	75	...	14	97	7	103	...	14	88
Aircraft Depôt ...	22	304	...	17	311	20	463	...	39	174
Allowance for wastage all units in India.	4	221	...	...	...	...	...	...	...	...
Headquarters, No. 1 Wing ...	8	18	...	3	9	7	14	...	3	6
Headquarters, No. 2 Wing ...	8	18	...	3	14	8	13	...	3	1
R. A. F. School (India) plus attached from Indian Army.	10	57	...	2	34	10	90	...	2	23
No. 5 Squadron ...	21	126	...	1	89	26	139	...	1	85
Staff College (a) ...	2	...	...	...	...	...	...	...	...	...
No. 20 Squadron ...	21	126	...	1	84	19	144	...	1	74
No. 27 Squadron ...	21	121	...	1	87	20	138	...	1	61
No. 28 Squadron ...	21	126	...	1	90	17	150	...	1	72
No. 31 Squadron ...	21	126	...	1	90	19	133	...	1	69
No. 60 Squadron ...	26	147	...	1	101	21	147	...	1	64
I. T. A. C. (attached A.-Depôt)	1	...	2	1	156	...	...	2	1	152
Total	*213	1,618	2	79	1,198	180	1,572	2	102	903
<b>ADMINISTRATIVE, R. A. F.</b>										
Medical Services ...	...	...	...	...	...	...	...	...	...	...
Headquarters, R. A. F. ...	2	1	...	...	...	2	...	...	...	...
R. A. F. School (India)	1	2	...	...	...	...	...	...	...	...
Aircraft Depôt ...	1	3	...	...	...	1	3	...	...	...
Aircraft Park ...	...	1	...	...	...	...	2	...	...	...
No. 20 Squadron ...	1	2	...	...	...	1	2	...	...	...
No. 5 Squadron ...	1	2	...	...	...	...	2	...	...	...
No. 28 Squadron ...	1	2	...	...	...	1	1	...	...	...
Nos. 27 and 60 Squadrons	1	2	...	...	...	1	5	...	...	...
No. 31 Squadron ...	1	2	...	...	...	1	2	...	...	...
Reserve ...	1	3	...	...	...	...	...	...	...	...
Total	10	20	...	...	...	7	17	...	...	...
GRAND TOTAL	223	1,638	2	79	1,198	187	1,589	2	102	903

(a) Paid out of Army Budget.  
\* Includes 3 attached from Indian Army.

C18FA

**'RETURN SHOWING THE ACTUAL STRENGTH OF THE ARMY AND ROYAL AIR FORCE IN INDIA INCLUDING PERSIAN GULF PORTS, THE E.P. FORCE, S. PERSIA AND S.E. PERSIA AND ADEN ON THE 1ST NOVEMBER 1922' [412v] (8/78)**

**BRITISH CAVALRY.**

Units.	SANCTIONED ESTABLISHMENT.				ACTUAL STRENGTH.			
	British Officers.	Other ranks.		Fol-lowers.	British Officers.	Other ranks.		Fol-lowers.
		British.	Indian.			British.	Indian.	
<b>BRITISH CAVALRY.</b>								
The Queen's Bays (2nd Dragoon Guards) ...	27	573	...	272	34	669	...	252
8-6th Dragoon Guards ...	27	573	...	272	32	700	...	259
4-7th " " ...	27	573	...	272	26	724	...	262
The Royal Scots Greys ...	27	573	...	272	9	585	...	...
4th Hussars ...	27	573	...	272	19	659	...	250
7th Queen's Own Hussars ...	27	573	...	272	29	649	...	171
11th Hussars P. A. O. ...	27	573	...	272	26	630	...	252
16th-5th The Queen's Lancers ...	27	573	...	272	25	666	...	279
<b>TOTAL</b> ...	<b>216</b>	<b>4,584</b>	<b>...</b>	<b>2,176</b> <sup>(a)</sup>	<b>200</b>	<b>5,282</b>	<b>...</b>	<b>1,725</b>

(a) Includes victualling establishment vide A. I. (L.) 292 of 1921.

**'RETURN SHOWING THE ACTUAL STRENGTH OF THE ARMY AND ROYAL AIR FORCE IN INDIA INCLUDING PERSIAN GULF PORTS, THE E.P. FORCE, S. PERSIA AND S.E. PERSIA AND ADEN ON THE 1ST NOVEMBER 1922' [413r] (9/78)**

(413)

ROYAL ARTILLERY. 3

Units.	SANCTIONED ESTABLISHMENT.					ACTUAL STRENGTH.				
	British Officers.	British Other Ranks.	Indian Officers.	Indian Other Ranks.	Followers.	British Officers.	British Other Ranks.	Indian Officers.	Indian Other Ranks.	Followers.
<b>Royal Horse Artillery.</b>										
2nd Brigade Headquarters, Lucknow										
“C” Battery										
“H” ”										
“K” ”										
“I” ”										
“L” ”	39	968	10	561	600	34	994	9	519	320
“C” Battery, Ammunition Column										
“H” ”										
“I” ”										
“K” ”										
“L” ”										
TOTAL	39	968	10	561	600	34	994	9	519	320
<b>Royal Field Artillery.</b>										
2nd (late 22nd) Brigade Headquarters.										
35th Battery										
42nd (late 104th) Battery	27	664	4	247	292	27	767	4	246	148
53rd (late 105th) ”										
87th (late 106th) ”										
18th Brigade, Headquarters.										
59th Battery										
98rd ”	27	634	4	247	292	29	674	5	217	92
94th ”										
95th ”										
20th Brigade Headquarters										
41st (late 133rd) Battery										
45th (late 145th) ”										
67th Battery	30	690	6	378	369	25	750	6	386	166
99th ”										
20th Brigade, Ammunition Column										
Carried over	84	2,018	14	872	953	81	2,191	15	849	406

'RETURN SHOWING THE ACTUAL STRENGTH OF THE ARMY AND ROYAL AIR FORCE IN INDIA INCLUDING PERSIAN GULF PORTS, THE E.P. FORCE, S. PERSIA AND S.E. PERSIA AND ADEN ON THE 1ST NOVEMBER 1922' [413v] (10/78)

4 ROYAL ARTILLERY—contd.

Units.	SANCTIONED ESTABLISHMENT.					ACTUAL STRENGTH.				
	British Officers.	British Other Ranks.	Indian Officers.	Indian Other Ranks.	Followers.	British Officers.	British Other Ranks.	Indian Officers.	Indian Other Ranks.	Followers.
Brought forward ...	84	2,018	14	872	953	81	2,191	15	849	406
<b>Royal Field Artillery—contd.</b>										
21st Brigade Headquarters ...										
21st (late 103rd) Battery ...										
101st Battery ...	27	664	4	247	292	27	839	6	239	183
102nd „ ...										
108th (late 148th) Battery ...										
23rd Brigade Headquarters ...										
60th (late 107th) Battery ...										
89th (late 108th) „ ...	27	664	4	247	292	26	640	5	234	178
90th (late 109th) „ ...										
100th Battery ...										
27th Brigade Headquarters ...										
24th (late 120th) Battery ...										
37th Battery ...	30	710	6	410	377	32	838	6	409	178
47th (late 121st) Battery ...										
105th (late 119th) „ ...										
27th Brigade, Ammunition Column										
7th (late 24th) Brigade Headquarters.										
9th (late 110th) Battery ...										
16th (late 111th) „ ...	27	664	4	247	292	28	701	4	247	128
17th (late 112th) „ ...										
43th Battery ...										
16th (late 32nd) Brigade Headquarters.										
27th Battery ...										
34th (late 134th) Battery ...	27	664	4	247	292	26	719	5	247	98
72nd (late 135th) „ ...										
86th Battery ...										
22nd (late 26th) Brigade Headquarters.										
32nd (late 116th) Battery ...										
33rd (late 117th) „ ...	27	664	4	247	292	28	624	5	231	226
36th (late 118th) „ ...										
55th (late 141st) „ ...										
Carried over ...	249	6,048	40	2,517	2,790	248	6,552	46	2,456	1,394

**'RETURN SHOWING THE ACTUAL STRENGTH OF THE ARMY AND ROYAL AIR FORCE IN INDIA INCLUDING PERSIAN GULF PORTS, THE E.P. FORCE, S. PERSIA AND S.E. PERSIA AND ADEN ON THE 1ST NOVEMBER 1922' [414r] (11/78)**

414

ROYAL ARTILLERY—*contd.*

Units.	SANCTIONED ESTABLISHMENT.					ACTUAL STRENGTH.				
	British Officers.	British Other Ranks.	Indian Officers.	Indian Other Ranks.	Followers.	British Officers.	British Other Ranks.	Indian Officers.	Indian Other Ranks.	Followers.
Brought forward ...	249	6,043	40	2,517	2,790	248	6,552	46	2,456	1,892
<b>Royal Field Artillery—<i>concl'd.</i></b>										
24th (late 29th) Brigade, Headquarters.										
22nd (late 125th) Battery ...										
50th (late 126th) „ ...	27	664	4	247	292	29	696	3	229	89
56th (late 128th) „ ...										
70th (late 127th) „ ...										
26th (late 25th) Brigade, Headquarters.										
15th (late 113th) Battery ...										
40th Battery ...	27	664	4	247	292	25	718	4	226	178
48th (late 114th) Battery ...										
71st (late 115th) Battery ...										
1st Indian Divisional Ammunition Column.	7	51	4	329	163	8	52	6	308	156
2nd Indian Divisional Ammunition Column.	7	51	4	329	163	7	56	2	326	157
Miscellaneous ...	4	...	...	...	...	4	...	...	...	...
<b>TOTAL</b> ...	<b>321</b>	<b>7,478</b>	<b>56</b>	<b>3,669</b>	<b>3,700</b>	<b>321</b>	<b>8,074</b>	<b>61</b>	<b>3,545</b>	<b>1,972</b>
<b>Royal Garrison Artillery.</b>										
<b>Pack Artillery.</b>										
20th Indian Pack Artillery Brigade										
10th Pack Battery, R. G. A. ...										
109th (Murree) „ „ ...	20	127	15	995	109	20	112	15	952	99
117th (Rawalpindi) Pack Battery										
119th (Maymyo) „ „ ...										
21st Indian Pack Artillery Brigade										
12th Pack Battery, R. G. A. ...										
101st Royal (Kohat) Pack Battery	20	127	15	995	109	23	123	15	955	101
106th (Jacob's) „ „ ...										
121st (Nowshera) Pack Battery ...										
Carried over ...	40	254	30	1,990	218	43	235	30	1,907	200

C18F

**'RETURN SHOWING THE ACTUAL STRENGTH OF THE ARMY AND ROYAL AIR FORCE IN INDIA INCLUDING PERSIAN GULF PORTS, THE E.P. FORCE, S. PERSIA AND S.E. PERSIA AND ADEN ON THE 1ST NOVEMBER 1922' [414v] (12/78)**

ROYAL ARTILLERY—*contd.*

Units.	SANCTIONED ESTABLISHMENT.					ACTUAL STRENGTH.				
	British Officers.	British Other Ranks.	Indian Officers.	Indian Other Ranks.	Followers.	British Officers.	British Other Ranks.	Indian Officers.	Indian Other Ranks.	Followers.
Brought forward ...	40	254	30	1,990	218	43	235	30	1,907	200
<b>Pack Artillery—<i>contd.</i></b>										
22nd Indian Pack Artillery Brigade										
8th Pack Battery, R. G. A. ...										
102nd (Derajat) Pack Battery ...	20	127	15	995	109	20	119	15	968	101
104th (Hazara) „ „ ...										
110th (Abbottabad) Pack Battery										
23rd Indian Pack Artillery Brigade										
17th Pack Battery, R. G. A. ...										
103rd (Peshawar) Pack Battery ...	20	127	15	995	109	18	108	14	960	96
108th (Lahore) Pack Battery ...										
116th (Zhob) „ „ ...										
24th Indian Pack Artillery Brigade										
11th Pack Battery, R. G. A. ...										
105th (Bombay) Pack Battery ...	20	127	15	995	109	20	126	15	959	102
114th (Rajputana) Pack Battery										
118th (Sohan) „ „ ...										
25th Indian Pack Artillery Brigade										
6th Pack Battery, R. G. A. ...										
107th (Gujrat) Pack Battery ...	20	127	15	995	109	19	119	15	961	101
113th (Dardoni) „ „ ...										
115th (Jhelum) „ „ ...										
Chitral Pack Artillery Section ...	2	...	2	127	12	2	...	2	129	12
111th (Dehra Dun) Pack Battery ...	4	1	4	253	25	4	2	4	244	25
<b>TOTAL, PACK ARTILLERY ...</b>	<b>126</b>	<b>763</b>	<b>96</b>	<b>6,950</b>	<b>691</b>	<b>126</b>	<b>709</b>	<b>95</b>	<b>6,128</b>	<b>637</b>

MEDICAL  
3rd Brigade  
4th Brigade  
8th Battery  
Total  
C  
Headquarters  
No. 51 Com  
No. 70  
No. 101  
Total  
Indian Co  
Frontier G  
Fort am  
Depot  
R. A. Train  
P. A. Train  
R. A. Boys  
Total  
R. H. A.  
R. F. A.  
Pack and P  
R. G. A.  
Depots and  
GRAND TOTAL  
(a) I  
(b) E  
(c) H

**'RETURN SHOWING THE ACTUAL STRENGTH OF THE ARMY AND ROYAL AIR FORCE IN INDIA INCLUDING PERSIAN GULF PORTS, THE E.P. FORCE, S. PERSIA AND S.E. PERSIA AND ADEN ON THE 1ST NOVEMBER 1922' [415r] (13/78)**

(415)

ROYAL ARTILLERY—*concl'd.*

Units.	SANCTIONED ESTABLISHMENT.					ACTUAL STRENGTH.				
	British Officers.	British Other Ranks.	Indian Officers.	Indian Other Ranks.	Followers.	British Officers.	British Other Ranks.	Indian Officers.	Indian Other Ranks.	Followers.
<b>MEDIUM ARTILLERY.</b>										
2nd Brigade, Headquarters, Agra...	27	546	2	125	126	26	512	2	114	53
4th Brigade, Headquarters, Roorkee	27	546	2	125	126	28	486	2	138	71
8th Battery ... ..	6	133	...	...	...	5	119	...	...	...
Total Medium Artillery ...	60	1,225	4	250	252	59	1,117	4	252	124
<b>Coast Artillery.</b>										
Headquarters, R. G. A., Companies	5	12	...	...	...	3	12	...	...	...
No. 51 Company ... ..	5	102	...	...	6	3	104	...	...	2
No. 70 ,, ... ..	5	102	...	...	6	5	67	...	...	2
No. 101 ,, ... ..	5	102	...	...	6	7	73	...	...	2
Total R. G. A. Companies ...	20	318	...	...	18	18	256	...	...	6
Indian Coast Artillery ...	4	...	5	360	21	3	...	5	347	22
Frontier Garrison Artillery ...	8	...	14	330	49	8	...	14	325	47
Fort armaments ... ..	...	20	...	...	152	...	20	...	...	150
<b>Depots and Training Centres.</b>										
R. A. Training Centre, Deesa ...	11	14	11	486	77	12	17	10	450	47
P. A. Training Centre, Lucknow...	11	9	11	708	65	10	8	11	525	47
R. A. Boys Depot ... ..	...	51	...	...	2	...	36	...	...	...
TOTAL ... ..	22	74	22	1,194	144	22	61	21	975	94
<b>Totals, Artillery.</b>										
R. H. A. ... ..	39	968	10	561	600	34	994	9	519	320
R. F. A. ... ..	321	7,478	56	3,669	3,700*	321	8,074	61	3,545	1,972
Pack and F. G. A. ... ..	134	763	110	6,980	740	134	709	109	6,453	684
R. G. A. ... ..	84	1,563	9	610	443	80	1,393	9	599	302
Depôts and Training Centres ...	22	74	22	1,194	144	22	61	21	975	94
<b>GRAND TOTAL, ROYAL ARTILLERY...</b>	600	10,846	207	(b) 12,714	(c) 5,627	(a) 591	(a) 11,231	(a) 209	(a) 12,091	(a) 3,872

(a) Includes 3 B. Os., 2 B. O. Rs., 2 I. Os., 102 I. O. Rs. and 16 Followers chargeable to War Office.  
 (b) Reduced *vide* A. I. (I) No. 486 of 1922.  
 (c) Includes followers entertained *vide* A. I. (I) No. 486 of 1922.

'RETURN SHOWING THE ACTUAL STRENGTH OF THE ARMY AND ROYAL AIR FORCE IN INDIA INCLUDING PERSIAN GULF PORTS, THE E.P. FORCE, S. PERSIA AND S.E. PERSIA AND ADEN ON THE 1ST NOVEMBER 1922' [415v] (14/78)

BRITISH INFANTRY.

Units.	SANCTIONED ESTABLISHMENT.					ACTUAL STRENGTH.				
	British Officers.	British Other Ranks.	Indian Officers.	Indian Other Ranks.	Followers.	British Officers.	British Other Ranks.	Indian Officers.	Indian Other Ranks.	Followers.
<b>Battalions, 45.</b>										
1st Bn., The Royal Scots ...						28	1,204	2	41	57
2nd Bn. (The Queen's) R. W. Surrey Regiment.						31	809	2	43	58
2nd Bn., The K. O. Royal Regiment (Lancasters).						30	993	2	41	25
2nd Bn., The Northumberland Fusiliers.						27	911	2	37	53
2nd Bn., The Royal Warwickshire Regiment.						28	949	2	41	75
1st Bn., The Royal Fusiliers ...						28	1,053	2	34	60
2nd Bn., The Lincolnshire Regiment.						25	973	2	41	67
2nd Bn., The Devonshire Regiment						32	1,046	2	34	37
1st Bn., The Suffolk Regiment ...						27	1,031	2	39	34
2nd Bn., The Somerset Light Infantry (P. A.)						31	1,015	2	45	57
2nd Bn., The West Yorkshire Regiment (The P. W. O.)						27	861	2	43	23
2nd Bn., The Bedfordshire and Hertfordshire Regiment.	23	1,012	2	43	72	24	893	2	42	67
	for each Battalion.									
2nd Bn., The Leicestershire Regiment.	1,260	Total 45,540	for 45 90	Battalions 1,935	3,240	33	1,055	2	30	46
1st Bn., The Green Howards ...						25	984	2	42	57
2nd Bn., The Lancashire Fusiliers						26	843	2	43	54
2nd Royal Scots Fusiliers ...						31	964	2	36	75
1st Bn., The Cheshire Regiment						28	716	2	36	129
1st Bn., The Royal Welch Fusiliers						25	806	2	38	73
2nd Bn., The South Wales Borderers						31	1,066	2	40	82
2nd Bn., The Cameronians ...						26	868	2	44	39
1st Bn., The Royal Inniskilling Fusiliers.						26	986	2	26	56
2nd Bn., The Gloucestershire Regiment.						30	1,011	2	35	56
1st Bn., The Worcestershire Regiment.						32	1,193	2	39	54
1st Bn., The D. C. Light Infantry						22	709	2	42	59
1st Bn., The Border Regiment ...						32	859	2	47	52
1st Bn., The South Staffordshire Regiment.						30	886	2	41	57
Carried over ...	1,260	45,540	90	1,935	3,240	738	24,744	52	1,020	1,512

TOTAL, BRITISH INFANTRY  
C16A



'RETURN SHOWING THE ACTUAL STRENGTH OF THE ARMY AND ROYAL AIR FORCE IN INDIA INCLUDING PERSIAN GULF PORTS, THE E.P. FORCE, S. PERSIA AND S.E. PERSIA AND ADEN ON THE 1ST NOVEMBER 1922' [416r] (15/78)

(416)

BRITISH INFANTRY—*concl'd.* 9

Units.	SANCTIONED ESTABLISHMENT.					ACTUAL STRENGTH.				
	British Officers.	British Other Ranks.	Indian Officers.	Indian Other Ranks.	Followers.	British Officers.	British Other Ranks.	Indian Officers.	Indian Other Ranks.	Followers.
Brought forward ...	1,260	45,540	90	1,935	3,015	738	24,744	52	1,020	1,512
<b>Battalions, 45—<i>concl'd.</i></b>										
2nd Bn., The South Lancashire Regiment.						24	648	2	43	51
1st Bn., The Welch Regiment.						24	895	2	41	41
1st Bn., The Black Watch (Royal Highlanders).						27	921	2	41	60
2nd Bn., The Ox. and Bucks Light Infantry.						27	653	1	33	56
1st Bn., The Royal West Kent Regiment.						30	1,003	2	41	58
2nd Bn., The K. O. Yorkshire Light Infantry.						23	633	2	40	46
1st Bn., The King's Shropshire Light Infantry.						28	851	2	39	54
1st Bn., The King's Royal Rifles.	28	1,012	2	43	72	29	1,066	2	43	67
4th Bn., The King's Royal Rifles.						8	304	...	...	...
2nd Bn., The Wiltshire Regiment.						25	862	2	27	54
2nd Bn., The Manchester Regiment.						25	869	1	42	28
2nd Bn., The York and Lancaster Regiment.						28	940	2	40	67
2nd Bn., The Durham Light Infantry.						33	993	1	37	57
2nd Bn., The Seaforth Highlanders.						29	797	2	43	32
1st Bn., The Q. O. Cameron Highlanders.						26	823	2	34	57
1st Bn., The Argyle and Sutherland Highlanders.						26	948	1	41	56
1st Bn., The Rifle Brigade (Prince Consort's Own).						29	924	2	39	104
2nd Bn., The Northamptonshire Regiment.						30	885	2	39	41
1st Bn., The Royal Berkshire Regiment.						27	933	2	41	62
<b>TOTAL, BRITISH INFANTRY...</b>	<b>1,260</b>	<b>45,540</b>	<b>90</b>	<b>1,935</b>	<b>(a) 3,240</b>	<b>1,236</b>	<b>40,692</b>	<b>84</b>	<b>1,724</b>	<b>2,503</b>

(a) Includes Virtualising Establishment, *vide* A. I. (I) 292 of 1921.

C16FA

**'RETURN SHOWING THE ACTUAL STRENGTH OF THE ARMY AND ROYAL AIR FORCE IN INDIA INCLUDING PERSIAN GULF PORTS, THE E.P. FORCE, S. PERSIA AND S.E. PERSIA AND ADEN ON THE 1ST NOVEMBER 1922' [416v] (16/78)**

10

MACHINE GUN CORPS.

Units.	SANCTIONED ESTABLISHMENT.					ACTUAL STRENGTH.					
	British Officers.	British Other Ranks.	Indian Officers.	Indian Other Ranks.	Followers.	British Officers.	British Other Ranks.	Indian Officers.	Indian Other Ranks.	Followers.	
<b>TANK CORPS.</b>											
<b>Armoured Car Companies.</b>											
No. 6 Armoured Car Company						8	144	...	...	25	
No. 7 " " "						7	142	...	...	38	
No. 8 " " "						11	152	...	...	...	
No. 9 " " "	60	930	...	...	228	10	138	...	...	39	
No. 10 " " "						10	173	...	...	29	
No. 11 " " "						9	131	...	...	16	
<b>TOTAL</b>	...	60	930	...	...	228	55	860	...	...	147

1st Duke  
2nd Lancer  
3rd Cavalry  
4th Duke  
5th King  
6th Duke  
7th Light  
8th King  
9th Royal  
10th Queen  
Cavalry  
11th Prince  
12th Cavalry  
13th Prince  
14th Lancer  
15th Light  
16th Queen  
17th King  
18th King  
19th Lancer  
20th King  
21st Lancer

TOTAL, 1st

'RETURN SHOWING THE ACTUAL STRENGTH OF THE ARMY AND ROYAL AIR FORCE IN INDIA INCLUDING PERSIAN GULF PORTS, THE E.P. FORCE, S. PERSIA AND S.E. PERSIA AND ADEN ON THE 1ST NOVEMBER 1922' [417r] (17/78)

(417)

INDIAN CAVALRY. 11

Units.	SANCTIONED ESTABLISHMENT.*				ACTUAL STRENGTH.			
	British Officers.	Indian Officers.	Indian Officers and Other Ranks.	Fol-lowers.	British Officers.	Indian Officers.	Other Ranks.	Fol-lowers.
<b>Regiments, 21.</b>								
1st Duke of York's Own Skinner's Horse ...					20	19	502	206
2nd Lancers (Gardner's Horse) ...					15	18	497	206
3rd Cavalry ...					18	18	507	203
4th Duke of Combridge's Own Hodson's Horse					17	18	503	206
5th King Edward's Own Probyn's Horse ...					21	17	505	182
6th Duke of Connaught's Own Lancers ...					17	18	504	205
7th Light Cavalry ...					24	17	497	204
8th King George's Own Light Cavalry ...					26	18	496	206
9th Royal Deccan Horse ...					18	18	502	206
10th Queen Victoria's Own Corps of Guides Cavalry, Frontier Force.	294	378	10,584	4,326	16	18	497	204
11th Prince Albert Victori's Own Cavalry, Frontier Force.					22	18	500	206
12th Cavalry, Frontier Force ...	14	18	564	206	30	20	507	204
14th Prince of Wale's Own Scinde Horse ...					24	18	500	206
15th Lancers ...					26	19	504	206
16th Light Cavalry ...					14	16	504	196
17th Queen Victoria's Own Poona Horse ...					28	18	496	184
18th King Edward's Own Cavalry ...					22	18	498	212
19th King George's Own Lancers ...					23	17	500	204
20th Lancers ...					16	18	501	206
21st King George's Own Central India Horse					23	19	535	209
32nd Lancers ...					15	16	501	206
<b>TOTAL, INDIAN CAVALRY REGIMENTS IN INDIA ...</b>	<b>294</b>	<b>378</b>	<b>10,584</b>	<b>4,326</b>	<b>435</b>	<b>(b) 376</b>	<b>10,546</b>	<b>4,267</b>

(b) Includes 4 Indian Officers and 43 Indian Other Ranks on demobilization leave.

'RETURN SHOWING THE ACTUAL STRENGTH OF THE ARMY AND ROYAL AIR FORCE IN INDIA INCLUDING PERSIAN GULF PORTS, THE E.P. FORCE, S. PERSIA AND S.E. PERSIA AND ADEN ON THE 1ST NOVEMBER 1922' [417v] (18/78)

12

INDIAN CAVALRY—concl'd.

Units.	SANCTIONED ESTABLISHMENT.				ACTUAL STRENGTH.			
	British Officers.	Indian Officers.	Other Ranks.	Fol-lowers.	British Officers.	Indian Officers.	Other Ranks.	Fol-lowers.
<b>Depots of Units serving Overseas (1).</b>								
31st D. C. O. Lancers ... ..	2	3	87	40	4	4	90	44
<b>TOTAL, DEPOTS OF UNITS SERVING OVERSEAS ...</b>	<b>2</b>	<b>3</b>	<b>87</b>	<b>40</b>	<b>4</b>	<b>4</b>	<b>90</b>	<b>44</b>

Sa  
No. 1 King Geo  
No. 2 Queen Vic  
No. 3 Royal Supt  
Burma  
Tort  
De  
Karachi Defe  
Calcutta  
Bangora  
Bombay  
E. and M. C  
No. A Division  
No. B  
No. C  
No. D  
No. E  
No. F  
No. G  
No. 1 (Line) C  
including St  
No. 1 (Line) C  
including St  
No. 2 (Wireless)  
including St  
No. 3 (Wireless)  
Signal Training  
"A" Cavalry B  
"B"  
"C"  
"D"  
Signal School  
(a)  
(b)  
CISFA

**'RETURN SHOWING THE ACTUAL STRENGTH OF THE ARMY AND ROYAL AIR FORCE IN INDIA INCLUDING PERSIAN GULF PORTS, THE E.P. FORCE, S. PERSIA AND S.E. PERSIA AND ADEN ON THE 1ST NOVEMBER 1922' [418r] (19/78)**

418

ENGINEERS. 13

Units.	SANCTIONED ESTABLISHMENT.					ACTUAL STRENGTH.				
	British Officers.	British Other Ranks.	Indian Officers.	Indian Other Ranks.	Followers.	British Officers.	British Other Ranks.	Indian Officers.	Indian Other Ranks.	Followers.
<b>Sappers and Miners.</b>										
1st King George's Own Sappers and Miners...						38	58	53	2,764	258
2nd Queen Victoria's Own Sappers and Miners...						35	55	47	2,111	185
3rd Royal Sappers and Miners ...	102	173	149	7,475	62	28	43	46	2,200	135
Burma " " " ...						4	6	6	295	19
TOTAL, SAPPERS AND MINERS	102	173	149	7,475	62	105	162	152	7,370	597
<b>Defence Light Section.</b>										
Karachi Defence Light Section ...						1	9	1	26	6
Calcutta " " " ...						1	9	1	16	6
Bangoon " " " ...	4	52	4	92	25	1	12	1	29	1
Bombay " " " ...						1	16	1	31	4
Total	4	52	4	92	25	4	46	4	102	17
E. and M. Companies and Parks	3	16	...	155	20	...	...	...	...	...
TOTAL ENGINEERS	109	241	153	7,722	667	109	208	156	7,472	614
<b>Signal Units.</b>										
No. A. Divisional Signal Company ...						8	94	5	160	44
No. B " " " ...						10	173	5	296	48
No. C " " " ...						8	179	5	281	50
No. D " " " ...						7	149	4	255	53
No. E " " " ...						11	172	5	298	53
No. F " " " ...						13	115	5	145	44
No. G " " " ...						14	155	4	302	21
No. 1 (Line) Company "A" Corps Signals including Signal Park.						6	75	2	111	33
No. 1 (Line) Company "B" Corps Signals including Signal Park.	152	2,044	55	3,256	757	7	104	2	131	30
No. 2 (Wireless) Company "A" Corps Signals including Signal Workshop Section.						7	173	2	108	60
No. 2 (Wireless) Company "B" Corps Signals ..						5	180	1	169	70
Signal Training Centre and Depot ...						19	309	11	761	44
"A" Cavalry Brigade Signal Troop						1	22	...	29	21
"B" " " " " "						1	24	...	30	20
"C" " " " " "						1	24	...	29	21
"D" " " " " "						1	6	...	3	...
Signal School						5	15	3	10	...
TOTAL, SIGNAL UNITS	152	2,044	55	3,256	757	(b) 124	*(b) 2,049	(b) 54	(b) 3,118	(b) 617

(a) Includes 1 I. O., 43 Indian Other Ranks and 5 Followers chargeable to War Office.  
(b) Includes 3 E. Os., 31 B. O. Rs., 1 I. O., 52 I. O. Rs., and 6 Followers chargeable to W. O.  
\*Includes 36 men of Cavalry, Artillery and Infantry attached to Signals but borne on the strength of their units.

C18FA

'RETURN SHOWING THE ACTUAL STRENGTH OF THE ARMY AND ROYAL AIR FORCE IN INDIA INCLUDING PERSIAN GULF PORTS, THE E.P. FORCE, S. PERSIA AND S.E. PERSIA AND ADEN ON THE 1ST NOVEMBER 1922' [418v] (20/78)

14

INDIAN INFANTRY.

Units,	SANCTIONED ESTABLISHMENT.				ACTUAL STRENGTH.			
	British Officers.	Indian Officers.	Other Ranks.	Followers.	British Officers.	Indian Officers.	Other Ranks.	Followers.
<b>Indian Infantry, 121 (includes 1 Unit under disbandment).</b>								
1st Brahmans ... ..					32	18	805	45
2nd Queen Victoria's Own Rajput Light Infantry					15	20	758	49
4th Prince Albert Victor's Rajputs ... ..					12	18	824	50
1-6th Royal Jat Light Infantry ... ..					16	18	760	48
2-6th " " " (T. B.) ... ..					14	20	967	52
7th D. C. O. Rajputs ... ..					28	19	737	49
8th Rajputs ... ..					14	20	738	50
10th Jats ... ..					20	19	755	49
13th Rajputs (The Shekhawati Regiment) (T. B.)					12	16	886	44
16th Rajputs (The Lucknow Regiment) (T. B.) (c)					13	17	847	49
18th Infantry ... ..	12	20	806	50	17	15	708	47
20th D. C. O. Infantry ... ..					14	20	761	42
21st Punjabis (T. B.) (c) ... ..					17	17	941	43
24th " ... ..	9	14	636	35	14	19	722	48
25th " ... ..	Total for 100 Battalions				17	18	790	50
26th " ... ..	1,140	1,880	77,200	4,700	25	19	754	45
27th " (b) ... ..					25	17	788	47
28th " ... ..					16	19	796	46
29th " (T. B.) ... ..					17	13	621	35
30th " ... ..					17	20	804	49
31st " ... ..					15	18	783	46
35th Sikhs (T.B.) (c) ... ..					22	17	922	44
36th " ... ..					13	20	797	50
Carried over ... ..	1,140	1,880	77,200	4,700	405	417	18,264	1,077

(c) Includes strength of Training Companies of units serving overseas on Imperial charge.  
(b) Under orders for service overseas and on Imperial charge.

(c) Incl

'RETURN SHOWING THE ACTUAL STRENGTH OF THE ARMY AND ROYAL AIR FORCE IN INDIA INCLUDING PERSIAN GULF PORTS, THE E.P. FORCE, S. PERSIA AND S.E. PERSIA AND ADEN ON THE 1ST NOVEMBER 1922' [419r] (21/78)

419

INDIAN INFANTRY—contd.

15

Units.	SANCTIONED ESTABLISHMENT.				ACTUAL STRENGTH.			
	British Officers.	Indian Officers.	Other Ranks.	Followers.	British Officers.	Indian Officers.	Other Ranks.	Followers.
Brought forward	1,140	1,880	77,200	4,700	405	417	18,264	1,077
<b>Indian Infantry—contd.</b>								
37th Dogras					18	19	802	49
38th "					18	20	801	50
1-39th Royal Garhwal Rifles					26	18	804	50
2-39th " " "					15	18	806	50
3-39th " " "					15	20	806	48
4-39th " " " (T. B.)					15	13	498	27
2-41st Dogras (T. B.) (c)					19	15	526	27
45th Rattray's Sikhs					17	20	688	47
46th Punjabis (T. B.) (c)					24	17	706	43
47th Sikhs					17	20	772	49
1-50th Kumaon Rifles					26	19	787	44
2-50th Kumaon Rifles	80	Battalions (active) at			14	18	780	45
51st Sikhs, F. F.	12	20	806	50	17	19	806	49
52nd " " "		per Battalion.			14	20	800	50
53rd " " "		20 Battalions (training) at			18	17	779	50
54th " " "	9	14	636	35	27	20	781	50
1-56th Punjabi Rifles (F. F.)		per Battalion.			13	20	772	47
2-56th " " ( " ) (T. C.) (c)					13	17	811	42
57th Wildes' Rifles (Frontier Force)					23	18	724	50
58th Vaughan's Rifles (Frontier Force)					14	21	767	51
59th Royal Scinde Rifles (F. F.)					18	19	784	50
62nd Punjabis					18	21	791	48
66th " "					12	20	778	49
1-67th " "					15	18	757	48
2-67th " (T. B.)					17	16	856	40
69th " "					19	18	806	50
Carried over	1,140	1,880	77,200	4,700	867	898	38,002	2,250

(c) Includes strength of Training Companies of units serving overseas on Imperial charge.

**'RETURN SHOWING THE ACTUAL STRENGTH OF THE ARMY AND ROYAL AIR FORCE IN INDIA INCLUDING PERSIAN GULF PORTS, THE E.P. FORCE, S. PERSIA AND S.E. PERSIA AND ADEN ON THE 1ST NOVEMBER 1922' [419v] (22/78)**

INDIAN INFANTRY—*contd.*

Units.	SANCTIONED ESTABLISHMENT.				ACTUAL STRENGTH.			
	British Officers.	Indian Officers.	Other Ranks.	Followers.	British Officers.	Indian Officers.	Other Ranks.	Followers.
Brought forward	1,140	1,880	77,200	4,700	867	898	38,002	2,280
<b>Indian Infantry—<i>contd.</i></b>								
1-70th Burma Rifles					19	14	654	24
8-70th Kachin Rifles					21	20	573	43
4-70th Chin Rifles					20	12	760	29
5-70th Burmans (T. B.) (c)					15	15	563	31
71-111th Infantry (under disbandment)					4	1	19	3
72nd Punjabis					12	13	699	48
73rd Carnatic Infantry...					7	16	759	44
74th Punjabis					20	20	775	48
75th Carnatic Infantry					10	20	787	46
76th Punjabis					13	19	707	43
79th Carnatic Infantry					20	20	762	38
82nd Punjabis			80 Battalions (active)		12	20	773	49
83rd Wajjahbad Light Infantry			at		18	21	756	48
84th Punjabis (T. B.)	12	20	806	50	13	17	823	42
86th Carnatic Infantry (T. B.)			per Battalion		11	14	791	35
87th " " "			20 Battalions (training)		16	19	793	49
1-89th Punjabis			at		17	19	782	44
2-89th " (T. B.)	9	14	636	35	10	15	706	45
90th " "			per Battalion.		17	19	795	47
91st " (Light Infantry)					14	16	793	44
92nd " "					13	19	751	42
93rd Burma Infantry					12	20	787	41
94th Russell's Infantry					24	19	796	46
95th " " (T. B.)					13	14	743	39
96th Berar Infantry					17	20	801	46
97th Deccan Infantry					21	19	788	47
98th Infantry					17	20	798	44
99th Deccan Infantry					20	20	764	46
101st Grenadiers					16	18	792	43
Carried over	1,140	1,880	77,200	4,700	1,309	1,397	59,002	3,474

(c) Includes strength of Training Companies of units serving overseas on Imperial charge.

C189A



'RETURN SHOWING THE ACTUAL STRENGTH OF THE ARMY AND ROYAL AIR FORCE IN INDIA INCLUDING PERSIAN GULF PORTS, THE E.P. FORCE, S. PERSIA AND S.E. PERSIA AND ADEN ON THE 1ST NOVEMBER 1922' [420r] (23/78)

420

INDIAN INFANTRY—*contd.* 17

Units.	SANCTIONED ESTABLISHMENT.				ACTUAL STRENGTH.			
	British Officers.	Indian Officers.	Indian Officers and Other Ranks.	Follow-ers.	British Officers.	Indian Officers.	Other Ranks.	Follow-ers.
Brought forward	1,140	1,880	77,200	4,700	1,309	1,397	59,092	3,474
<b>Indian Infantry—<i>contd.</i></b>								
104th Wellesley's Rifles	...	...	...	...	15	20	739	50
105th Mahratta Light Infantry	...	...	...	...	10	20	766	49
108th Infantry	...	...	...	...	10	19	782	50
109th Infantry	...	...	...	...	19	17	699	43
110th Mahratta Light Infantry	...	...	...	...	16	20	788	47
112th Infantry	...	...	...	...	10	19	791	47
113th " (T. B.) (c)	...	...	...	...	13	15	739	58
114th Mahrattas (T. B.) (c)	...	...	...	...	11	17	731	42
116th Mahrattas	...	...	...	...	19	19	753	40
117th Royal Mahrattas	...	...	...	...	12	20	753	45
119th Infantry (The Mooltan Regiment)	...	...	80 Battalions (active)	...	23	19	775	51
120th Rajputana Infantry	...	...	at	...	22	19	749	45
122nd " "	...	...	12 20 806 50	...	12	15	721	41
123rd Outram's Rifles	...	...	per Battalion.	...	12	20	804	49
1-124th D. C. O. Baluchistan Infantry	...	...	20 Battalions (training)	...	14	20	767	50
2-124th D. C. O. Baluchistan Infantry (T. B.)	...	...	at	...	13	21	982	43
125th Napier's Rifles	...	...	9 14 636 25	...	13	18	802	50
126th Baluchistan Infantry	...	...	per Battalion.	...	12	20	742	50
127th Q. M. O. Baluch Light Infantry	...	...	...	...	11	19	721	48
129th D. C. O. Baluchis	...	...	...	...	16	18	760	47
130th K. G. O. Baluchis	...	...	...	...	11	18	776	50
1st Battalion, Q. V. O. Corps of Guides (F. F.)...	...	...	...	...	14	20	789	50
2nd Battalion, Q. V. O. Corps of Guides (F. F.) (T. B.)	...	...	...	...	10	15	725	42
Carried over	1,140	1,880	77,200	4,700	1,627	1,828	76,796	4,561

C18FA (c) Includes strength of Training Companies of units serving overseas on Imperial charge.

**'RETURN SHOWING THE ACTUAL STRENGTH OF THE ARMY AND ROYAL AIR FORCE IN INDIA INCLUDING PERSIAN GULF PORTS, THE E.P. FORCE, S. PERSIA AND S.E. PERSIA AND ADEN ON THE 1ST NOVEMBER 1922' [420v] (24/78)**

INDIAN INFANTRY—*contd.*

Units.	SANCTIONED ESTABLISHMENT.				ACTUAL STRENGTH.			
	British Officers.	Indian Officers.	Indian Officers and Other Ranks.	Follow-ers.	British Officers.	Indian Officers.	Other Ranks.	Follow-ers.
Brought forward ...	1,140	1,880	77,200	4,700	1,627	1,828	76,796	4,561
<b>Indian Infantry—<i>concl'd.</i></b>								
GURKHAS.								
1st Battalion, 1st K. G. O. Gurkha Rifles ...					20	20	867	49
2nd " " " " " " ...					19	22	891	50
1st " 2nd K. E. O. " " ...					14	19	836	49
2nd " " " " " " ...					15	20	882	50
1st " 3rd Q. A. O. " " ...					16	20	895	50
2nd " " " " " " ...					17	19	884	58
1st " 4th Gurkha Rifles ...					14	22	1,049	56
2nd " " " " " " ...					18	21	746	50
1st " 5th Royal Gurkha Rifles (F. P.)...					14	20	910	50
2nd " " " " " " ...					20	19	904	50
1st " 6th Gurkha Rifles ...					20	19	896	50
2nd " " " " " " ...	260	400	(a) 18,420	1,000	26	21	872	58
1st " 7th " " " " ...					16	20	915	48
2nd " " " " " " ...	13	20	921	50	20	20	916	50
1st " 8th " " " " ...					20	19	905	50
2nd " " " " " " ...					12	20	868	50
1st " 9th " " " " ...					13	20	921	50
2nd " " " " " " ...					14	20	890	50
1st " 10th " " " " ...					19	21	918	50
2nd " " " " " " ...					14	20	912	50
Total ...	1,400	2,280	95,620	5,700	1,967	2,230	94,698	5,579
Deduct—Strength of Training Companies affiliated to Infantry Units on Imperial charge.	...	...	...	...	24	23	1,646	95
TOTAL, INDIAN INFANTRY BATTALIONS IN INDIA...	1,400	2,280	95,620	5,700	1,943	(b) 2,207	(b) 93,047	5,484

(a) In addition, each pre-war Gurkha Battalion will have 15 Recruit Boys.  
(b) Includes 4 Indian Officers and 120 Indian Other Ranks on demobilization leave.

**'RETURN SHOWING THE ACTUAL STRENGTH OF THE ARMY AND ROYAL AIR FORCE IN INDIA INCLUDING PERSIAN GULF PORTS, THE E.P. FORCE, S. PERSIA AND S.E. PERSIA AND ADEN ON THE 1ST NOVEMBER 1922' [421r] (25/78)**

(421)

INDIAN INFANTRY—*contd.* 19

Units.	SANCTIONED ESTABLISHMENT.				ACTUAL STRENGTH.			
	British Officers.	Indian Officers.	Other Ranks.	Followers.	British Officers.	Indian Officers.	Other Ranks.	Followers.
<b>Training Companies affiliated to Infantry Units serving Overseas.</b>								
*9th Bhopal Infantry (Persian Gulf) ...					6	5	207	13
11th Rajputs ...					1	3	162	10
14th Sikhs ...					1	2	132	8
15th Sikhs ...					1	3	172	9
1-19th Punjabis ...					5	2	207	8
*22nd Punjabis (Aden) ...					3	2	178	8
33rd Punjabis ...					8	3	187	11
40th Punjabis ...		2	2	148	1	2	190	8
*1-41st Dogras (Aden) ...				8	1	3	192	8
1-55th Coke's Rifles ...					1	2	162	6
2-70th Burma Rifles ...					3	2	144	7
102nd Grenadiers ...					2	2	140	20
103rd Mahratta Light Infantry ...					1	2	150	6
Total ...	26	26	1,924	104	34	33	2,323	124
<i>Deduct</i> Strength of Training Companies of units serving in Aden and Persia. ...					10	10	577	29
Total on Imperial charge ...	(c) 26	(c) 26	(c) 1,924	(c) 104	(c) 24	(c) 23	(c) 1,646	(c) 95
<b>Depot of Unit serving overseas.</b>								
2-55th Coke's Rifles ...	2	3	154	10	2	3	121	8
Total ...	2	3	154	10	2	3	121	8

(c) These are included in the strength of Training Battalions.  
\* Chargeable against Aden and Persia Grant.

**'RETURN SHOWING THE ACTUAL STRENGTH OF THE ARMY AND ROYAL AIR FORCE IN INDIA INCLUDING PERSIAN GULF PORTS, THE E.P. FORCE, S. PERSIA AND S.E. PERSIA AND ADEN ON THE 1ST NOVEMBER 1922' [421v] (26/78)**

Units.	SANCTIONED ESTABLISHMENT.				ACTUAL STRENGTH.				
	British Officers.	Indian Officers.	Indian Other Ranks.	Follow-ers.	British Officers.	Indian Officers.	Indian Other Ranks.	Follow-ers.	
<b>Training Companies affiliated to Infantry units serving in Waziristan and on Indian Charge.</b>									
4th Rajputs ...					1	2	170	13	
1-6th Royal Jats ...					2	3	171	8	
26th Punjabis ...					2	3	139	7	
36th Sikhs ...					1	2	158	8	
37th Dogras ...					1	4	150	8	
2-39th Royal Garhwal Rifles ...					4	3	172	8	
2-50th Kumaon Rifles ...					3	2	168	8	
57th Wilde's Rifles ...					1	3	188	7	
69th Punjabis ...		2	2	148	8	1	3	154	7
73rd Carnatic Infantry...					2	3	215	7	
91st Punjabis ...					1	3	139	7	
101st Grenadiers ...					1	2	132	9	
110th Mahratta Light Infantry ...					2	3	134	6	
119th Infantry ...					2	3	143	9	
120th Rajputana Infantry ...					2	3	173	10	
125th Napier's Rifles ...					2	3	149	8	
129th D. C. O. Baluchis ...					3	5	*233	9	
130th K. G. O. Baluchis ...					2	4	209	8	
Total ...	(a) 36	(a) 36	(a) 2,664	(a) 144	(a) 33	(a) 54	(a) 2,997	(a) 147	

(a) These are included in the strength of Training Battalions.  
\* Includes 1 Indian Other Rank on demobilization leave.

'RETURN SHOWING THE ACTUAL STRENGTH OF THE ARMY AND ROYAL AIR FORCE IN INDIA INCLUDING PERSIAN GULF PORTS, THE E.P. FORCE, S. PERSIA AND S.E. PERSIA AND ADEN ON THE 1ST NOVEMBER 1922' [422r] (27/78)

422

PIONEER BATTALIONS.

21

Units.	SANCTIONED ESTABLISHMENT.				ACTUAL STRENGTH.			
	British Officers.	Indian Officers.	Indian Officers and Other Ranks.	Followers.	British Officers.	Indian Officers.	Other Ranks.	Followers.
<b>Pioneer Battalions, 12. (Includes 1 unit under disbandment).</b>								
1-23rd Sikh Pioneers ...					20	15	733	38
2-23rd " " (T. B.) ...					13	18	445	27
32nd " " ...					12	15	785	38
34th Royal Sikh Pioneers ...				9 Battalions (active) at	13	16	782	38
48th Pioneers ...					21	17	742	35
61st King George's Own Pioneers ...				12 16 784 38	20	14	768	37
64th Pioneers ...				per Battalion	14	15	768	35
81st " (T. B.) ...				Battalions at (training)	11	10	321	16
106th Hazara Pioneers ...				9 11 469 35	17	21	843	47
107th Pioneers (b) ...				per Battalion.	16	15	705	38
121st " (T. B.) (c) ...					28	18	733	35
128th " ...					11	16	774	35
<b>Total</b> ...	135	177	8,463	447	186	185	8,399	419
<i>Deduct</i> —Strength of Training Company affiliated to Pioneer unit on Imperial charge.					7	9	404	16
<b>TOTAL, PIONEER BATTALIONS</b> ...	135	177	8,463	447	189	(a) 176	(a) 7,995	403

(a) Includes 1 Indian Officer and 9 Indian Other Ranks on demobilization leave.  
(b) Under orders for service overseas and on Imperial charge.  
(c) Includes strength of Training Company of unit serving overseas on Imperial charge.

'RETURN SHOWING THE ACTUAL STRENGTH OF THE ARMY AND ROYAL AIR FORCE IN INDIA INCLUDING PERSIAN GULF PORTS, THE E.P. FORCE, S. PERSIA AND S.E. PERSIA AND ADEN ON THE 1ST NOVEMBER 1922' [422v] (28/78)

22

PIONEER BATTALIONS—*contd.*

Units.	SANCTIONED ESTABLISHMENT.				ACTUAL STRENGTH.				
	British Officers.	Indian Officers.	Other Ranks.	Fol- lowers.	British Officers.	Indian Officers.	Other Ranks.	Fol- lowers.	
<b>Training Companies affiliated to Pioneers serving overseas.</b>									
12th Pioneers (The Kelat-i-Ghilzie Regt.) ...	2	2	148	8	1	4	287	8	
107th Pioneers ...	2	2	148	8	1	2	117	8	
Total ...	(a) 4	(a) 4	(a) 296	(a) 16	(a) 7	(a) 9	(a) *404	(a) 16	
<b>Training Companies of Pioneers serving in Waziristan and on Indian Charge.</b>									
1-23rd Sikh Pioneers ...	} for each company units strength.	2	2	148	8	5	3	143	8
61st Pioneers ...		2	3	139	7				
Total ..	(a) 4	(a) 4	(a) 296	(a) 16	(a) 7	(a) 6	(a) 282	(a) 15	

(a) These are included in the strength of Training Battalion.  
\* Include 22 Indian Other Ranks on demobilization leave.

**'RETURN SHOWING THE ACTUAL STRENGTH OF THE ARMY AND ROYAL AIR FORCE IN INDIA INCLUDING PERSIAN GULF PORTS, THE E.P. FORCE, S. PERSIA AND S.E. PERSIA AND ADEN ON THE 1ST NOVEMBER 1922' [423r] (29/78)**

423

UNITS SERVING IN PERSIA AND ADEN. 23

Units.	SANCTIONED ESTABLISHMENT.					ACTUAL STRENGTH.				
	British Officers.	British Other Ranks.	Indian Officers.	Indian Other Ranks.	Fol-lowers.	British Officers.	British Other Ranks.	Indian Officers.	Indian Other Ranks.	Fol-lowers.
<b>UNITS SERVING IN PERSIA AND ADEN.</b>										
<b>Royal Garrison Artillery.</b>										
Headquarters ... ..						...	...	...	...	...
62nd Company, R. G. A. (Aden) ...	14	446	...	...	43	11	409	...	...	3
16th Pack Battery, R. G. A. (Aden)						...	...	...	...	...
<b>British Infantry.</b>										
2nd Battalion, The Buffs, S. K. Regiment (Aden).	28	1,022*	...	48*	67	32	830	...	...	64
<b>Cavalry.</b>										
Aden Troop ... ..	1	...	5	156	9	2	...	5	154	9
<b>Sappers and Miners.</b>										
23rd Company, 3rd Sappers and Miners.	2	30	...	70	10	1	1	1	43	...
Aden Defence Light Section ...						1	26	1	16	1
<b>Signal Units.</b>										
Aden Signal Section ... ..	1	34	...	73	10	1	10	...	43	14
<b>Indian Infantry.</b>										
9th Bhopal Infantry (Persian Gulf)						22	...	19	783	50
22nd " " ... ..	36	...	60	2,418	150	13	...	20	765	48
1-41st Dogras ... ..						12	...	(a) 20	(a) 832	51
<b>TOTAL</b> ... ..	<b>82</b>	<b>1,532</b>	<b>65</b>	<b>2,765</b>	<b>289</b>	<b>95</b>	<b>1,276</b>	<b>66</b>	<b>2,636</b>	<b>240</b>

\* Includes Military Foot Police.  
() Includes 1 I. O. and 22 I. O. Rs. on Demobilization leave.

'RETURN SHOWING THE ACTUAL STRENGTH OF THE ARMY AND ROYAL AIR FORCE IN INDIA INCLUDING PERSIAN GULF PORTS, THE E.P. FORCE, S. PERSIA AND S.E. PERSIA AND ADEN ON THE 1ST NOVEMBER 1922' [423v] (30/78)

24

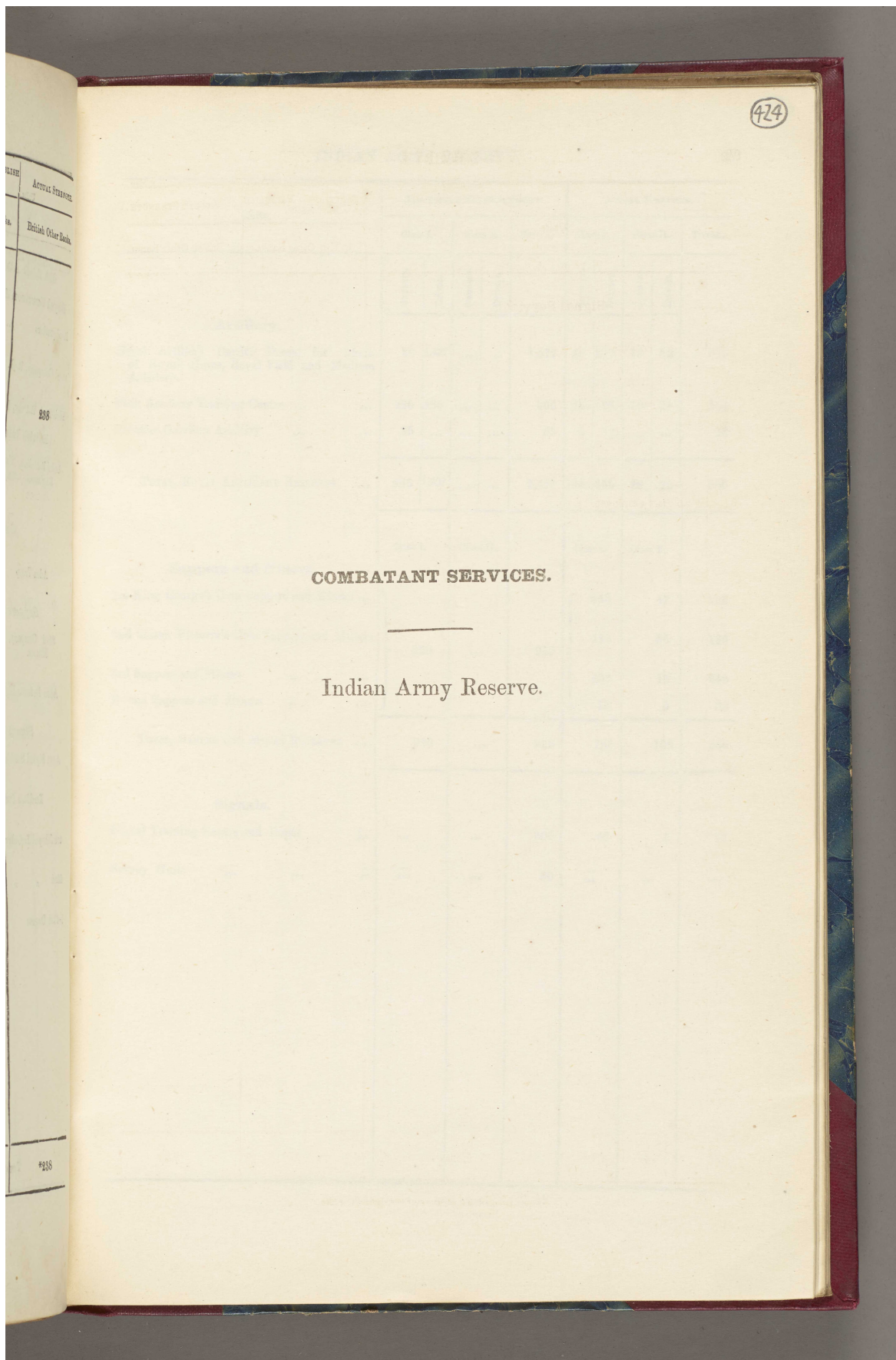
INDIA AND RESERVE

Units.										SANCTIONED ESTABLISHMENT.		ACTUAL STRENGTH.	
										British Other Ranks.		British Other Ranks.	
<b>Signal Service.</b>													
I. T. D.	...	...	...	...	...	...	...	...	...	}	920	238	
Regular Soldiers employed by the I. T. D.											...	...	
TOTAL										...	...	920	*238

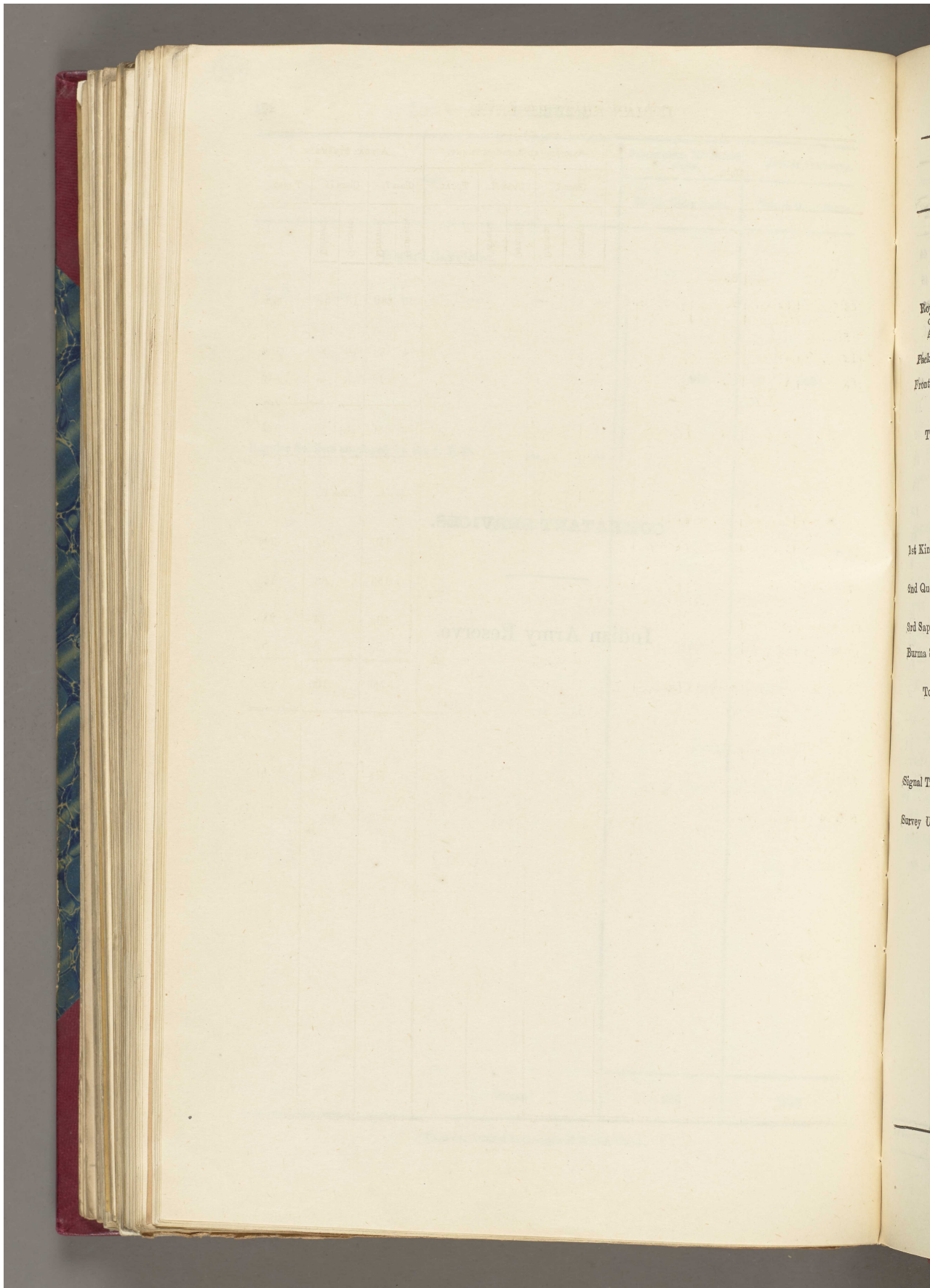
\*These are included in Strength of British Units.



**'RETURN SHOWING THE ACTUAL STRENGTH OF THE ARMY AND ROYAL AIR FORCE IN INDIA INCLUDING PERSIAN GULF PORTS, THE E.P. FORCE, S. PERSIA AND S.E. PERSIA AND ADEN ON THE 1ST NOVEMBER 1922' [424r] (31/78)**



**'RETURN SHOWING THE ACTUAL STRENGTH OF THE ARMY AND ROYAL AIR FORCE IN INDIA INCLUDING PERSIAN GULF PORTS, THE E.P. FORCE, S. PERSIA AND S.E. PERSIA AND ADEN ON THE 1ST NOVEMBER 1922' [424v] (32/78)**



'RETURN SHOWING THE ACTUAL STRENGTH OF THE ARMY AND ROYAL AIR FORCE IN INDIA INCLUDING PERSIAN GULF PORTS, THE E.P. FORCE, S. PERSIA AND S.E. PERSIA AND ADEN ON THE 1ST NOVEMBER 1922' [425r] (33/78)

(925)

INDIAN ARMY RESERVE. 27

Units.	SANCTIONED ESTABLISHMENT.					ACTUAL STRENGTH.				
	Class I.		Class II.		TOTAL.	Class I.		Class II.		TOTAL.
	Gunners.	Drivers.	Gunners.	Drivers.		Gunners.	Drivers.	Gunners.	Drivers.	
<b>Artillery.</b>										
Royal Artillery Depôt, Deesa, for whole of Royal Horse, Royal Field and Medium Artillery.	50	1,427	...	...	1,477	65	260	18	52	395
Pack Artillery Training Centre ...	420	480	...	...	900	33	83	10	27	153
Frontier Garrison Artillery ...	35	...	...	...	35	6	12	...	...	18
<b>TOTAL, ROYAL ARTILLERY RESERVES</b> ...	<b>505</b>	<b>1,907</b>	<b>...</b>	<b>...</b>	<b>2,412</b>	<b>104</b>	<b>355</b>	<b>28</b>	<b>79</b>	<b>566</b>
<b>Sappers and Miners.</b>										
1st King George's Own Sappers and Miners ...						348		47		395
2nd Queen Victoria's Own Sappers and Miners	920		...		920	153		33		186
3rd Sappers and Miners ...						234		15		249
Burma Sappers and Miners ...						25		5		30
<b>TOTAL, SAPPER AND MINER RESERVES</b> ...	<b>920</b>	<b>...</b>	<b>...</b>	<b>...</b>	<b>920</b>	<b>760</b>	<b>100</b>	<b>...</b>	<b>...</b>	<b>860</b>
<b>Signals.</b>										
Signal Training Centre and Depôt	...	...	...	...	300	33	...	4	...	37
Survey Units ...	...	...	...	...	80	...	...	...	...	...

'RETURN SHOWING THE ACTUAL STRENGTH OF THE ARMY AND ROYAL AIR FORCE IN INDIA INCLUDING PERSIAN GULF PORTS, THE E.P. FORCE, S. PERSIA AND S.E. PERSIA AND ADEN ON THE 1ST NOVEMBER 1922' [425v] (34/78)

28

INDIAN ARMY RESERVE—*contd.*

INDIAN CAVALRY.

Units.	SANCTIONED ESTABLISHMENT.			ACTUAL STRENGTH.		
	Class I.	Class II.	TOTAL.	Class I.	Class II.	TOTAL.
1st D. Y. O. Skinner's Horse ...				44	...	44
2nd Lancers (Gardner's Horse) ...				48	...	48
3rd Cavalry ...				62	24	86
4th D. C. O. Hodson's Horse ...				40	1	41
5th K. E. O. Probyn's Horse ...				44	7	51
6th D. C. O. Lancers... ..				36	7	43
7th Light Cavalry ... ..				9	2	11
8th K. G. O. Light Cavalry ...				36	4	40
9th Royal Deccan Horse ... ..				50	1	51
10th Q. V. O. Corps of Guides Cavalry F.F. ...				18	...	18
11th P. A. V. O. Cavalry F. F. ... ..				29	...	29
12th Cavalry F. F. ... ..				56	6	62
14th P. W. O. Scinde Horse ... ..	1,008	...	1,008	9	...	9
15th Lancers ... ..				7	...	7
16th Light Cavalry ... ..				10	...	10
17th Q. V. O. Poona Horse ... ..				50	15	65
18th K. E. O. Cavalry ... ..				34	...	34
19th K. G. O. Lancers ... ..				2	...	2
20th Lancers ... ..				26	2	28
21st K. G. O. Central India Horse ...				43	8	51
31st Lancers ... ..				...	...	...
32nd Lancers ... ..				14	...	14
<b>TOTAL CAVALRY ...</b>	<b>1,008</b>	<b>...</b>	<b>1,008</b>	<b>667</b>	<b>77</b>	<b>744</b>

**'RETURN SHOWING THE ACTUAL STRENGTH OF THE ARMY AND ROYAL AIR FORCE IN INDIA INCLUDING PERSIAN GULF PORTS, THE E.P. FORCE, S. PERSIA AND S.E. PERSIA AND ADEN ON THE 1ST NOVEMBER 1922' [426r] (35/78)**

(426)

INDIAN ARMY RESERVE—*contd.* 29

INDIAN INFANTRY.

Units.	SANCTIONED ESTABLISHMENT.			ACTUAL STRENGTH.		
	Class I.	Class II.	TOTAL.	Class I.	Class II.	TOTAL.
<b>Indian Infantry.</b>						
1st Indian Infantry Group ...	...	...	405	398	64	*462
62nd Punjabis ...	...	...				
1-66th „ ...	...	...				
1-76th „ ...	...	...				
82nd „ ...	...	...				
1st Brahmans ...	...	...	405	217	54	271
84th Punjabis (T. B.) ...	...	...				
2nd Indian Infantry Group ...	...	...				
1-67th Punjabis ...	...	...	324	284	23	257
2-67th „ (T. B.) ...	...	...				
69th „ ...	...	...				
72nd „ ...	...	...				
74th „ ...	...	...				
87th „ ...	...	...	324	284	23	257
3rd Indian Infantry Group ...	...	...				
73rd Infantry ...	...	...				
75th „ ...	...	...				
79th „ ...	...	...	324	284	23	257
83rd Light Infantry ...	...	...				
86th Infantry (T. B.) ...	...	...				
Carried over ...	1,134	...	1,134	849	141	990

\* Includes Reservists of 1-8rd Brahmans.

C18FA

'RETURN SHOWING THE ACTUAL STRENGTH OF THE ARMY AND ROYAL AIR FORCE IN INDIA INCLUDING PERSIAN GULF PORTS, THE E.P. FORCE, S. PERSIA AND S.E. PERSIA AND ADEN ON THE 1ST NOVEMBER 1922' [426v] (36/78)

30

INDIAN ARMY RESERVE—*contd.*

INDIAN INFANTRY—*contd.*

Units.	SANCTIONED ESTABLISHMENT.			ACTUAL STRENGTH.		
	Class I.	Class II.	TOTAL.	Class I.	Class II.	TOTAL.
Brought forward ...	1,134	...	1,134	849	141	990
<b>Indian Infantry—<i>contd.</i></b>						
4th Indian Infantry Group ...	405	...	405	474	92	566
101st Grenadiers ...						
102nd " ...						
108th Infantry ...						
109th " ...						
112th " ...	405	...	405	327	64	391
113th " (T. B.) ...						
5th Indian Infantry Group ...						
103rd Light Infantry ...						
105th " " ...	405	...	405	421	120	541
110th " " ...						
114th Mahrattas (T. B.) ...						
116th " ...						
117th " ...						
6th Indian Infantry Group ...	405	...	405	421	120	541
104th Rifles ...						
13th Rajputs (T. B.) ...						
123rd Rifles ...						
125th " ...						
120th Infantry ...	405	...	405	421	120	541
122nd " ...						
Carried over ...	2,349	...	2,349	2,071	417	2,488

'RETURN SHOWING THE ACTUAL STRENGTH OF THE ARMY AND ROYAL AIR FORCE IN INDIA INCLUDING PERSIAN GULF PORTS, THE E.P. FORCE, S. PERSIA AND S.E. PERSIA AND ADEN ON THE 1ST NOVEMBER 1922' [427r] (37/78)

(427)

INDIAN ARMY RESERVE—*contd.* 31

INDIAN INFANTRY—*contd.*

Units.	SANCTIONED ESTABLISHMENT.			ACTUAL STRENGTH.		
	Class I.	Class II.	TOTAL.	Class I.	Class II.	TOTAL.
Brought forward	2,349	...	2,349	2,071	417	2,488
<b>Indian Infantry—<i>contd.</i></b>						
7th Indian Infantry Group	...	...	...	...	...	...
2nd Light Infantry	...	...	...	...	...	...
4th Rajputs	...	...	...	...	...	...
7th "	...	...	405	569	177	746
8th "	...	...	...	...	...	...
11th "	...	...	...	...	...	...
16th " (T. B.)	...	...	...	...	...	...
8th Indian Infantry Group	...	...	...	...	...	...
1-89th Punjabis	...	...	...	...	...	...
2-89th " (T. B.)	...	...	...	...	...	...
90th "	...	...	405	286	99	385
91st "	...	...	...	...	...	...
92nd "	...	...	...	...	...	...
93rd Infantry	...	...	...	...	...	...
9th Indian Infantry Group	...	...	...	...	...	...
1-6th Jats	...	...	...	...	...	...
2-6th " (T. B.)	...	...	...	...	...	...
10th "	...	...	486	579	166	745
18th Infantry	...	...	...	...	...	...
119th "	...	...	...	...	...	...
1-50th Rifles	...	...	...	...	...	...
2-50th "	...	...	...	...	...	...
Carried over	3,645	...	3,645	3,505	859	4,364

'RETURN SHOWING THE ACTUAL STRENGTH OF THE ARMY AND ROYAL AIR FORCE IN INDIA INCLUDING PERSIAN GULF PORTS, THE E.P. FORCE, S. PERSIA AND S.E. PERSIA AND ADEN ON THE 1ST NOVEMBER 1922' [427v] (38/78)

INDIAN ARMY RESERVE—*contd.*

INDIAN INFANTRY—*contd.*

Units.	SANCTIONED ESTABLISHMENT.			ACTUAL STRENGTH.		
	Class I.	Class II.	TOTAL.	Class I.	Class II.	TOTAL.
Brought forward	3,645	...	3,645	3,505	859	4,364
<b>Indian Infantry—<i>contd.</i></b>						
10th Indian Infantry Group	...	...	...	...	...	...
1-124th Infantry	...	...	...	...	...	...
2-124th " (T. B.)	...	...	...	...	...	...
126th "	...	...	...	...	...	...
127th "	...	...	...	...	...	...
129th Baluchis	...	...	...	...	...	...
130th "	...	...	...	...	...	...
11th Indian Infantry Group	...	...	...	...	...	...
14th Sikhs	...	...	...	...	...	...
15th "	...	...	...	...	...	...
35th " (T. B.)	...	...	...	...	...	...
36th "	...	...	...	...	...	...
45th "	...	...	...	...	...	...
47th "	...	...	...	...	...	...
12th Indian Infantry Group	...	...	...	...	...	...
51st Sikhs	...	...	...	...	...	...
52nd "	...	...	...	...	...	...
53rd "	...	...	...	...	...	...
54th "	...	...	...	...	...	...
1st Guides	...	...	...	...	...	...
2nd " (T. B.)	...	...	...	...	...	...
13th Indian Infantry Group	...	...	...	...	...	...
55th Rifles	...	...	...	...	...	...
1-56th Rifles	...	...	...	...	...	...
2-56th " (T. B.)	...	...	...	...	...	...
57th "	...	...	...	...	...	...
58th "	...	...	...	...	...	...
59th "	...	...	...	...	...	...
Carried over	5,265	...	5,265	4,593	1,123	5,716



'RETURN SHOWING THE ACTUAL STRENGTH OF THE ARMY AND ROYAL AIR FORCE IN INDIA INCLUDING PERSIAN GULF PORTS, THE E.P. FORCE, S. PERSIA AND S.E. PERSIA AND ADEN ON THE 1ST NOVEMBER 1922' [428r] (39/78)

(428)

INDIAN ARMY RESERVE—contd. 4333

INDIAN INFANTRY—contd.

Units.	SANCTIONED ESTABLISHMENT.			ACTUAL STRENGTH.		
	Class I.	Class II.	TOTAL.	Class I.	Class II.	TOTAL.
Brought forward	5,265	...	5,265	4,593	1,123	5,716
<b>Indian Infantry—contd.</b>						
14th Indian Infantry Group	...	...	...	...	...	...
19th Punjabis	...	...	...	...	...	...
20th "	...	...	...	...	...	...
21st " (T. B.)	...	...	405	271	117	388
22nd "	...	...	...	...	...	...
24th "	...	...	...	...	...	...
40th Pathans	...	...	...	...	...	...
15th Indian Infantry Group	...	...	...	...	...	...
25th Punjabis	...	...	...	...	...	...
26th "	...	...	324	267	82	349
27th "	...	...	...	...	...	...
28th "	...	...	...	...	...	...
29th " (T. B.)	...	...	...	...	...	...
16th Indian Infantry Group	...	...	...	...	...	...
30th Punjabis	...	...	...	...	...	...
31st "	...	...	324	270	63	333
33rd "	...	...	...	...	...	...
9th Infantry	...	...	...	...	...	...
46th Punjabis (T. B.)	...	...	...	...	...	...
17th Indian Infantry Group	...	...	...	...	...	...
37th Dogras	...	...	...	...	...	...
18th "	...	...	211	142	16	158
1-41st "	...	...	...	...	...	...
2-41st " (T. B.)	...	...	...	...	...	...
Carried over	6,529	...	6,529	5,543	1,401	6,944

C18FA

'RETURN SHOWING THE ACTUAL STRENGTH OF THE ARMY AND ROYAL AIR FORCE IN INDIA INCLUDING PERSIAN GULF PORTS, THE E.P. FORCE, S. PERSIA AND S.E. PERSIA AND ADEN ON THE 1ST NOVEMBER 1922' [428v] (40/78)

INDIAN ARMY RESERVE—*contd.*

INDIAN INFANTRY—*contd.*

Units.	SANCTIONED ESTABLISHMENT.			ACTUAL STRENGTH.		
	Class I.	Class II.	TOTAL.	Class I.	Class II.	TOTAL.
Brought forward ...	6,529	...	6,529	5,543	1,401	6,944
<b>Indian Infantry—<i>contd.</i></b>						
18th Indian Infantry Group ...	211	...	211	344	34	378
1-39th Rifles ...						
2-39th " ...						
3-39th " ...						
4-39th " (T. B.) ...	405	...	405	733	210	943
19th Indian Infantry Group ...						
94th Infantry ...						
95th " (T. B.) ...						
96th " ...						
97th " ...						
98th " ...	324	...	324	34	1	35
20th Indian Infantry Group ...						
2-70th Rifles ...						
2-70th " ...						
3-70th " ...	81	...	81	70	...	70
4-70th " ...						
5-70th " (T. B.) ...						
2-55th Rifles ...	81	...	81	70	...	70
71-111th Infantry ...						
Carried over ...	7,550	.....	7,550	6,724	1,646	8,370

**'RETURN SHOWING THE ACTUAL STRENGTH OF THE ARMY AND ROYAL AIR FORCE IN INDIA INCLUDING PERSIAN GULF PORTS, THE E.P. FORCE, S. PERSIA AND S.E. PERSIA AND ADEN ON THE 1ST NOVEMBER 1922' [429r] (41/78)**

(429)

INDIAN ARMY RESERVE—*concl.* 35

INDIAN INFANTRY—*concl.*

Units.	SANCTIONED ESTABLISHMENT.			ACTUAL STRENGTH.		
	Class I.	Class II.	TOTAL.	Class I.	Class II.	TOTAL.
Brought forward	7,550	...	7,550	6,724	1,646	8,370
<b>Indian Infantry—<i>concl.</i></b>						
1st Battalion, 1st K. G. O. Gurkha Rifles	...	...	...	32	...	32
2nd " 1st " " " "	...	...	...	34	...	34
1st " 2nd K. E. O. " " "	...	...	...	39	...	39
2nd " 2nd " " " "	...	...	...	59	...	59
1st " 3rd Q. A. O. " " "	...	...	...	41	...	41
2nd " 3rd " " " "	...	...	...	11	...	11
1st " 4th Gurkha Rifles	...	...	...	...	...	...
2nd " 4th " " "	...	...	...	28	...	28
1st " 5th Royal Gurkha Rifles	...	...	...	10	...	10
2nd " 5th " " " "	...	...	...	58	...	58
1st " 6th Gurkha Rifles	...	...	...	39	...	39
2nd " 6th " " " "	...	...	...	57	...	57
1st " 7th " " " "	...	...	...	1	...	1
2nd " 7th " " " "	...	...	...	37	...	37
1st " 8th " " " "	...	...	...	67	...	67
2nd " 8th " " " "	...	...	...	68	...	68
1st " 9th " " " "	...	...	...	...	...	...
2nd " 9th " " " "	...	...	...	23	...	23
1st " 10th " " " "	...	...	...	30	...	30
2nd " 10th " " " "	...	...	...	11	...	11
} 20 Gurkha Battalions } at 100 per Battalion } 2,000 ... 2,000						
<b>TOTAL INDIAN INFANTRY RESERVE</b>	9,550	...	9,550	7,369	1,646	9,015

**'RETURN SHOWING THE ACTUAL STRENGTH OF THE ARMY AND ROYAL AIR FORCE IN INDIA INCLUDING PERSIAN GULF PORTS, THE E.P. FORCE, S. PERSIA AND S.E. PERSIA AND ADEN ON THE 1ST NOVEMBER 1922' [429v] (42/78)**

36

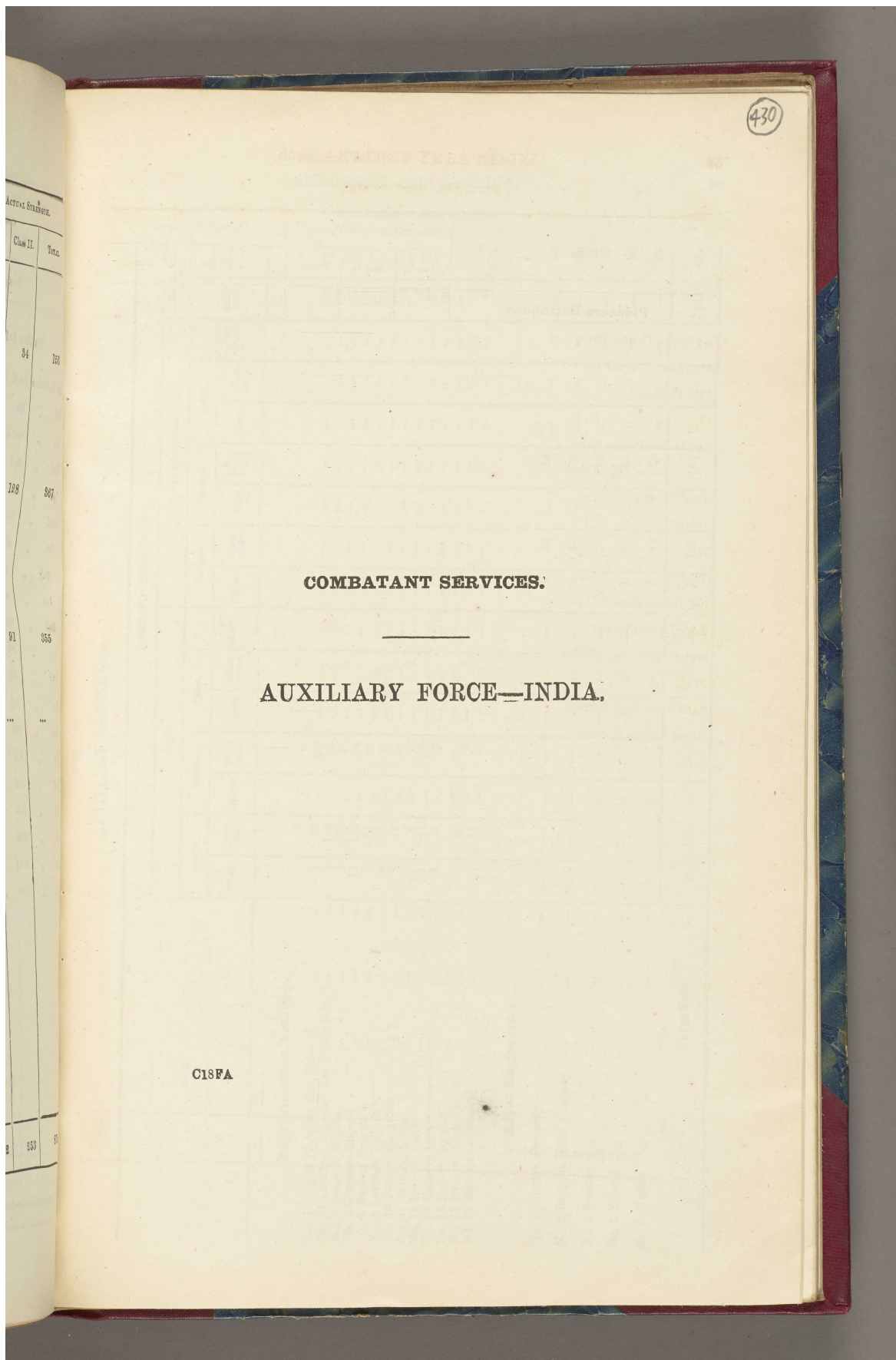
INDIAN ARMY RESERVE—*concl.*

PIONEERS BATTALIONS.

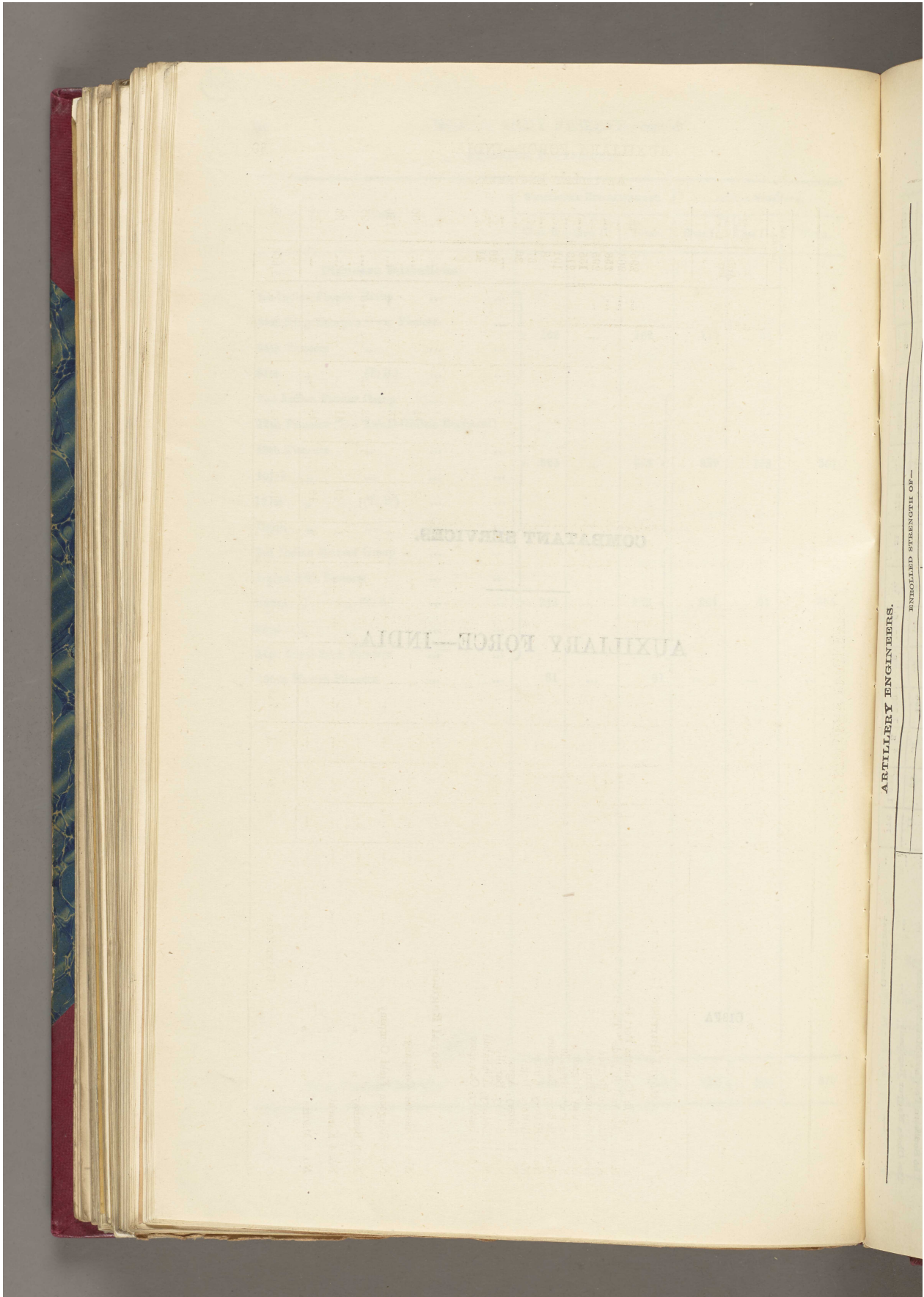
Units.	SANCTIONED ESTABLISHMENT.			ACTUAL STRENGTH.		
	Class I.	Class II.	TOTAL.	Class I.	Class II.	TOTAL.
<b>Pioneers Battalions.</b>						
1st Indian Pioneer Group ...	162	...	162	119	34	153
61st King George's Own Pioneers ...						
64th Pioneers ...						
81st " (T. B.) ...	324	...	324	230	128	367
2nd Indian Pioneer Group ...						
12th Pioneers (The Kelati-Ghilzie Regiment)						
48th Pioneers ...						
107th " ...	243	...	243	264	91	355
121st " (T. B.) ...						
128th " ...						
3rd Indian Pioneer Group ...	81	...	81	...	...	...
1-23rd Sikh Pioneers ...						
2-23rd " " (T. B.) ...						
32nd " " ...						
34th Royal Sikh Pioneers ...	81	...	81	...	...	...
106th Hazara Pioneers ...						
<b>TOTAL PIONEERS RESERVE ...</b>	<b>810</b>	<b>...</b>	<b>810</b>	<b>622</b>	<b>253</b>	<b>875</b>

C18

**'RETURN SHOWING THE ACTUAL STRENGTH OF THE ARMY AND ROYAL AIR FORCE IN INDIA INCLUDING PERSIAN GULF PORTS, THE E.P. FORCE, S. PERSIA AND S.E. PERSIA AND ADEN ON THE 1ST NOVEMBER 1922' [430r] (43/78)**



**'RETURN SHOWING THE ACTUAL STRENGTH OF THE ARMY AND ROYAL AIR FORCE IN INDIA INCLUDING PERSIAN GULF PORTS, THE E.P. FORCE, S. PERSIA AND S.E. PERSIA AND ADEN ON THE 1ST NOVEMBER 1922' [430v] (44/78)**



'RETURN SHOWING THE ACTUAL STRENGTH OF THE ARMY AND ROYAL AIR FORCE IN INDIA INCLUDING PERSIAN GULF PORTS, THE E.P. FORCE, S. PERSIA AND S.E. PERSIA AND ADEN ON THE 1ST NOVEMBER 1922' [431r] (45/78)

431

AUXILIARY FORCE—INDIA.

39

ARTILLERY ENGINEERS.

CORPS.	ENROLLED STRENGTH OF—														TOTAL ALL RANGES.			
	ARTILLERY.				ROYAL ENGINEERS.				ROYAL ENGINEERS.									
	Active.		Reserve.		Cadet.		Superm-inary officers.		Active.		Reserve.		Cadet.			Superm-inary officers.		
Officers.	Other ranks.	Officers.	Other ranks.	Officers.	Other ranks.	Officers.	Other ranks.	Officers.	Other ranks.	Officers.	Other ranks.	Officers.	Other ranks.	Officers.	Other ranks.	Officers.	Other ranks.	
<b>Royal Garrison Artillery.</b>																		
No. 1 Brigade (Calcutta Port Defence)	9	33	...	...	...	...	...	...	...	...	...	...	...	...	...	...	...	...
No. 11 (Madras) Brigade "The Duke's Own"	8	110	...	...	...	...	...	...	...	...	...	...	...	...	...	...	...	...
No. 3 Rangoon Brigade	9	182	...	...	...	...	...	...	...	...	...	...	...	...	...	...	...	...
No. 4 Cossopore Brigade	13	118	...	...	...	...	...	...	...	...	...	...	...	...	...	...	...	...
No. 5 Bombay Brigade	7	62	...	...	...	...	...	...	...	...	...	...	...	...	...	...	...	...
No. 6 Lucknow Brigade	9	158	...	...	...	...	...	...	...	...	...	...	...	...	...	...	...	...
No. 14 Battery, Bangalore	5	72	...	...	...	...	...	...	...	...	...	...	...	...	...	...	...	...
No. 15 Battery, Kirkee	...	...	...	...	...	...	...	...	...	...	...	...	...	...	...	...	...	...
No. 16 Battery, Delhi	1	3	...	...	...	...	...	...	...	...	...	...	...	...	...	...	...	...
No. 17 Battery, Agra	...	...	...	...	...	...	...	...	...	...	...	...	...	...	...	...	...	...
No. 18 Battery, Bareilly	1	17	...	...	...	...	...	...	...	...	...	...	...	...	...	...	...	...
No. 19 Battery, Allahabad	...	...	...	...	...	...	...	...	...	...	...	...	...	...	...	...	...	...
No. 20 Battery, Cawnpore	1	16	...	...	...	...	...	...	...	...	...	...	...	...	...	...	...	...
<b>Royal Engineers.</b>																		
No. 1 Calcutta Company	...	...	...	...	...	...	...	...	...	...	...	...	...	...	...	...	...	...
No. 2 Rangoon Field Company	...	...	...	...	...	...	...	...	...	...	...	...	...	...	...	...	...	...
No. 3 Bombay "	...	...	...	...	...	...	...	...	...	...	...	...	...	...	...	...	...	...
No. 4 Karachi "	...	...	...	...	...	...	...	...	...	...	...	...	...	...	...	...	...	...
No. 5 Madras "	...	...	...	...	...	...	...	...	...	...	...	...	...	...	...	...	...	...
GRAND TOTAL	64	804	...	...	...	...	...	...	...	...	...	...	...	...	...	...	...	...

'RETURN SHOWING THE ACTUAL STRENGTH OF THE ARMY AND ROYAL AIR FORCE IN INDIA INCLUDING PERSIAN GULF PORTS, THE E.P. FORCE, S. PERSIA AND S.E. PERSIA AND ADEN ON THE 1ST NOVEMBER 1922' [431v] (46/78)

CAVALRY.

Corps.	ENROLLED STRENGTH OF—												TOTAL ALL SERVICES.			
	MOUNTED.						DEMOUNTED AND INFANTRY.						Mounded Infantry.	Dis-mounded and Cavalry.		
	Active.		Reserve.		Cadet.		Active.		Reserve.		Cadet.					
Officers.	Other ranks.	Officers.	Other ranks.	Officers.	Other ranks.	Super-numerary officers.	Other ranks.	Officers.	Other ranks.	Officers.	Other ranks.	Super-numerary officers.	Other ranks.			
The Bihar Light Horse	12	81	...	120	...	...	...	6	48	...	161	...	...	...	213	205
The Calcutta Light Horse	13	166	...	130	...	...	...	...	...	...	...	...	...	...	309	...
The Surma Valley Light Horse	25	165	...	184	...	...	...	...	...	...	...	...	...	...	374	...
The Assam Valley Light Horse	32	310	...	378	...	...	...	...	...	...	...	...	...	...	720	...
The United Provinces Horse (S. R.)	17	112	...	19	...	...	...	...	...	...	...	...	...	...	326	...
The United Provinces Horse (N. R.)	8	52	...	121	...	...	...	...	...	...	...	...	...	...	181	...
The Bombay Light Horse	2	68	...	23	...	6	...	...	...	...	...	...	...	...	104	...
The Northern Bengal Mounted Rifles	17	281	...	179	...	...	...	7	74	...	38	...	...	...	477	357
The Punjab Light Horse	11	66	...	142	...	...	...	...	...	...	...	...	...	...	219	...
The Southern Provinces Mounted Rifles	28	239	...	225	...	...	...	...	...	...	...	...	...	...	495	...
The Chota Nagpur Regiment	11	63	...	168	...	...	...	18	163	...	949	...	...	...	332	560
<b>GRAND TOTAL</b>	<b>176</b>	<b>1,603</b>	<b>3</b>	<b>1,860</b>	<b>2</b>	<b>6</b>	<b>...</b>	<b>31</b>	<b>315</b>	<b>...</b>	<b>558</b>	<b>...</b>	<b>238</b>	<b>...</b>	<b>3,650</b>	<b>1,122</b>

No. 1 Coorg ...  
No. 2 Kanaboli ...  
No. 3 Alameda ...  
No. 4 Delhi Co ...  
No. 5 Agri Clm ...  
No. 6 Bawal ...  
No. 7 Lucknow ...  
No. 8 Bawal ...  
No. 9 Coimbatore ...  
No. 10 Coimbatore ...  
No. 11 Alahabad ...  
No. 12 Cawnpore ...  
  
Royal Ar ...  
No. 1 Rangoon Co ...  
No. 2 Calcutta ...  
No. 3 Bombay ...  
No. 4 Alahabad ...  
No. 5 Cawnpore ...



'RETURN SHOWING THE ACTUAL STRENGTH OF THE ARMY AND ROYAL AIR FORCE IN INDIA INCLUDING PERSIAN GULF PORTS, THE E.P. FORCE, S. PERSIA AND S.E. PERSIA AND ADEN ON THE 1ST NOVEMBER 1922' [432r] (47/78)

432

AUXILIARY FORCE—INDIA—*contd.*

41

MACHINE GUN CORPS.

Corps.	ENROLLED STRENGTH OF—							Total all ranks.
	ACTIVE.		RESERVE.		CADET.		Supernu- merary officers.	
	O.	O. R.	O.	O. R.	O.	O. R.		
<b>Machine Gun Corps.</b>								
No. 1 Coorg and Mysore Company...	7	43	...	48	...	...	...	98
No. 2 Karachi Company	4	58	...	43	...	...	...	105
No. 3 Ahmedabad Company	...	3	...	16	...	...	...	19
No. 4 Delhi Company ...	8	83	1	86	...	...	...	178
No. 5 Agra Company ...	5	61	...	84	...	23	...	173
No. 6 Bareilly Company	...	...	...	...	...	...	...	...
No. 7 Lucknow Company	7	98	...	26	...	...	...	131
No. 8 Bombay Company	...	...	...	...	...	...	...	...
No. 9 Cossipore Company	4	49	...	114	...	...	...	167
No. 10 Cossipore Company	4	50	...	80	...	...	...	134
No. 11 Allahabad Company	1	10	...	4	...	1	...	16
No. 12 Cawnpore Company	2	51	...	16	...	...	...	69
	42	506	1	517	...	24	...	1,090
<b>Royal Army Service Corps.</b>								
No. 1 Rangoon Company	...	...	...	...	...	...	...	...
No. 2 Calcutta "	...	...	...	...	...	...	...	...
No. 3 Bombay "	3	22	...	...	...	...	...	25
No. 4 Allahabad "	1	8	...	22	...	2	...	33
No. 5 Cawnpore "	1	27	...	...	...	...	...	28
<b>Total</b>	5	57	...	22	...	2	...	86

'RETURN SHOWING THE ACTUAL STRENGTH OF THE ARMY AND ROYAL AIR FORCE IN INDIA INCLUDING PERSIAN GULF PORTS, THE E.P. FORCE, S. PERSIA AND S.E. PERSIA AND ADEN ON THE 1ST NOVEMBER 1922' [432v] (48/78)

AUXILIARY FORCE—INDIA—*contd.*

RAILWAY CORPS.

Corps.	ENROLLED STRENGTH OF—							Total all ranks.
	ACTIVE.		RESERVE.		CADET.		Super-numerary officers.	
	O.	O. R.	O.	O. R.	O.	O. R.		
<b>Railway Corps.</b>								
East Indian Railway Regiment—								
1st Battalion ... ..	41	437	...	313	...	26	...	817
2nd „ ... ..	30	319	...	426	...	51	...	826
3rd „ ... ..	19	371	...	268	...	...	...	658
The Eastern Bengal Railway Battalion ...	37	271	...	443	...	...	...	756
The Great Indian Peninsula Railway Regiment—								
1st Battalion ... ..	42	708	...	535	...	...	...	1,285
2nd „ ... ..	15	316	...	313	...	26	...	670
The Bombay, Baroda and Central India Railway Regiment—								
1st Battalion ... ..	32	179	...	192	...	40	...	443
2nd „ ... ..	37	331	...	449	...	25	...	842
The Burma Railways Battalion ... ..	22	466	...	473	...	...	...	961
The Bengal and North-Western Railway Regiment	18	177	...	92	...	4	...	291
The North-Western Railway Regiment—								
1st Battalion ... ..	22	331	...	405	...	27	1	786
2nd „ ... ..	17	171	...	251	...	4	1	444
The Oudh and Rohilkhand Railway Battalion ...	14	164	...	279	...	...	...	457
The South Indian Railway Regiment ... ..	38	633	...	629	...	30	...	1,330
The Madras and Southern Mahratta Railway Regiment—								
1st Battalion ... ..	41	564	...	534	...	...	...	1,139
2nd „ ... ..	18	312	...	337	...	87	1	755
The Bengal Nagpur Railway Regiment—								
1st Battalion ... ..	29	411	...	402	...	...	...	842
2nd „ ... ..	18	...	...	672	...	...	...	690
The Assam-Bengal Railway Battalion ... ..	21	254	...	124	...	...	...	399
TOTAL ... ..	511	6,415	...	7,142	...	320	8	14,391

The Madras Co  
The Nagpur B  
The Punjab B  
The Simla Rif  
The Calcutta B  
The Bangalore B  
The Allahabad B  
The Mysore B  
The Nizam Tal B  
The Teasagar B  
The Bombay B  
The Coorg B  
The Dargun B  
The Nizam M  
The Sind B  
The Hyderabad B  
The Upper B  
The Poon B  
The Calcutta P  
The East Coast B  
The Eastern B  
The Bihar G  
The Calcutta S  
The Delhi C

'RETURN SHOWING THE ACTUAL STRENGTH OF THE ARMY AND ROYAL AIR FORCE IN INDIA INCLUDING PERSIAN GULF PORTS, THE E.P. FORCE, S. PERSIA AND S.E. PERSIA AND ADEN ON THE 1ST NOVEMBER 1922' [433r] (49/78)

(433)

AUXILIARY FORCE—INDIA—*concl.* 43

INFANTRY.

Corps.	ENROLLED STRENGTH OF—								Total all ranks
	ACTIVE.		RESERVE.		CADET.		Superna- merary officers.		
	O.	O. R.	O.	O. R.	O.	O. R.			
<b>Infantry.</b>									
The Madras Guards ...	12	459	...	170	...	32	...	673	
The Nagpur Rifles ...	10	151	...	291	...	31	1	484	
The Punjab Rifles ...	14	241	...	239	...	75	...	569	
The Simla Rifles ...	13	122	...	149	...	97	...	381	
The Calcutta Battalion ...	12	381	...	247	...	101	...	741	
The Bangalore Battalion ...	14	222	...	252	...	164	...	652	
The Allahabad Rifles ...	10	85	...	136	...	41	...	272	
The Mussoorie Battalion ...	14	74	...	91	...	188	...	367	
The Naini Tal Rifles ...	8	53	...	78	...	86	...	225	
The Tenasserim Battalion ...	7	356	...	...	...	40	...	403	
The Bombay Battalion ...	5	410	7	246	...	...	...	668	
The Cawnpore Rifles ...	11	118	...	100	...	...	...	229	
The Rangoon Battalion ...	23	695	...	409	...	83	...	1,310	
The Nilgiri Malabar Battalion ...	19	336	...	254	...	48	...	657	
The Sind Rifles ...	6	203	...	123	...	...	...	335	
The Hyderabad Rifles ...	10	363	...	172	...	1	...	546	
The Baluchistan Rifles ...	2	17	...	21	...	...	...	40	
The Upper Burma Battalion ...	27	298	...	364	...	...	...	689	
The Poona Rifles ...	16	171	...	114	...	88	...	389	
The Calcutta Presidency Battalion ...	17	440	...	209	...	144	...	810	
The East Coast Battalion ...	11	261	...	115	...	31	...	418	
The Eastern Bengal Company ...	5	89	...	80	...	...	...	174	
The Kolar Gold Field Battalion ...	27	370	...	296	...	65	...	758	
The Calcutta Scottish ...	15	313	...	276	...	...	...	604	
The Delhi Contingent ...	2	59	...	52	...	1	...	114	
<b>Total Infantry</b> ...	<b>310</b>	<b>6,287</b>	<b>7</b>	<b>4,487</b>	<b>...</b>	<b>1,316</b>	<b>1</b>	<b>12,408</b>	

'RETURN SHOWING THE ACTUAL STRENGTH OF THE ARMY AND ROYAL AIR FORCE IN INDIA INCLUDING PERSIAN GULF PORTS, THE E.P. FORCE, S. PERSIA AND S.E. PERSIA AND ADEN ON THE 1ST NOVEMBER 1922' [433v] (50/78)

44 INDIAN TERRITORIAL FORCE.

Unit.	STRENGTH.		Total all Ranks.
	Officers.	Indian Other Ranks.	
UNIVERSITY TRAINING CORPS.			
1st Bombay Battalion ... ..	15	629	644
2nd Calcutta Battalion ... ..	...	479	479
3rd Allahabad Battalion ... ..	6	269	275
4th Lahore Company ... ..	13	472	485
5th Madras Company ... ..	18	635	653
6th Burma Battalion ... ..	6	410	416
7th Patna Company ... ..	...	...	...
8th Benares Company ... ..	...	...	...
Total ... ..	58	2,894	2,952

'RETURN SHOWING THE ACTUAL STRENGTH OF THE ARMY AND ROYAL AIR FORCE IN INDIA INCLUDING PERSIAN GULF PORTS, THE E.P. FORCE, S. PERSIA AND S.E. PERSIA AND ADEN ON THE 1ST NOVEMBER 1922' [434r] (51/78)

(434)

INDIAN TERRITORIAL FORCE—concl'd. 45

Unit.	STRENGTH.			
	British Officers.	Indian Officers.	Indian Other Ranks.	Total Indian Ranks.
INDIAN TERRITORIAL FORCE.				
1st Battalion, Bombay Pioneers ... ..	1	...	740	740
2nd Battalion, Bombay Pioneers ... ..	1	...	740	740
1st Battalion, 2nd Queen Victoria's Own Rajput Light Infantry.	1	...	716	716
1st Battalion, 4th P. A. V. Rajputs ... ..	1	...	628	628
1st Battalion, 6th Royal Jat Light Infantry ... ..	1	...	647	647
1st Battalion, 25th Punjabis ... ..	1	6	665	671
1st Battalion, 26th Punjabis ... ..	1	2	736	738
1st Battalion, 37th Dogras ... ..	1	...	89	89
1st Battalion, 39th Royal Garhwal Rifles ... ..	1	...	224	224
1st Battalion, Merwara Infantry ... ..	...	...	173	173
1st Battalion, 51st Sikhs ... ..	...	...	...	...
1st Battalion, 55th Rifles (F. F.) ... ..	1	...	532	532
1st Battalion, 62nd Punjabis ... ..	1	12	648	660
1st Battalion, 66th Punjabis ... ..	...	...	...	...
1st Battalion, 70th Burma Rifles ... ..	1	15	864	879
1st Battalion, 73rd Carnatic Infantry ... ..	...	22	606	628
1st (Malabar) Battalion, 75th Carnatic Infantry .. ..	...	18	709	727
1st Battalion, 79th Carnatic Infantry ... ..	...	17	654	671
1st Battalion, 83rd Wallajahbad Light Infantry ... ..	...	...	...	...
1st Battalion, 94th Russell's Infantry ... ..	1	...	732	732
1st Battalion, 103rd Mahratta Light Infantry ... ..	1	...	120	120
Total	14	92	10,223	10,315

**'RETURN SHOWING THE ACTUAL STRENGTH OF THE ARMY AND ROYAL AIR FORCE IN INDIA INCLUDING PERSIAN GULF PORTS, THE E.P. FORCE, S. PERSIA AND S.E. PERSIA AND ADEN ON THE 1ST NOVEMBER 1922' [434v] (52/78)**

THE ARMY AND ROYAL AIR FORCE

Regiment	Strength	Remarks
1st Battalion, 1st Punjab Regiment	1,200	
2nd Battalion, 1st Punjab Regiment	1,200	
3rd Battalion, 1st Punjab Regiment	1,200	
4th Battalion, 1st Punjab Regiment	1,200	
5th Battalion, 1st Punjab Regiment	1,200	
6th Battalion, 1st Punjab Regiment	1,200	
7th Battalion, 1st Punjab Regiment	1,200	
8th Battalion, 1st Punjab Regiment	1,200	
9th Battalion, 1st Punjab Regiment	1,200	
10th Battalion, 1st Punjab Regiment	1,200	
11th Battalion, 1st Punjab Regiment	1,200	
12th Battalion, 1st Punjab Regiment	1,200	
13th Battalion, 1st Punjab Regiment	1,200	
14th Battalion, 1st Punjab Regiment	1,200	
15th Battalion, 1st Punjab Regiment	1,200	
16th Battalion, 1st Punjab Regiment	1,200	
17th Battalion, 1st Punjab Regiment	1,200	
18th Battalion, 1st Punjab Regiment	1,200	
19th Battalion, 1st Punjab Regiment	1,200	
20th Battalion, 1st Punjab Regiment	1,200	
21st Battalion, 1st Punjab Regiment	1,200	
22nd Battalion, 1st Punjab Regiment	1,200	
23rd Battalion, 1st Punjab Regiment	1,200	
24th Battalion, 1st Punjab Regiment	1,200	
25th Battalion, 1st Punjab Regiment	1,200	
26th Battalion, 1st Punjab Regiment	1,200	
27th Battalion, 1st Punjab Regiment	1,200	
28th Battalion, 1st Punjab Regiment	1,200	
29th Battalion, 1st Punjab Regiment	1,200	
30th Battalion, 1st Punjab Regiment	1,200	
31st Battalion, 1st Punjab Regiment	1,200	
32nd Battalion, 1st Punjab Regiment	1,200	
33rd Battalion, 1st Punjab Regiment	1,200	
34th Battalion, 1st Punjab Regiment	1,200	
35th Battalion, 1st Punjab Regiment	1,200	
36th Battalion, 1st Punjab Regiment	1,200	
37th Battalion, 1st Punjab Regiment	1,200	
38th Battalion, 1st Punjab Regiment	1,200	
39th Battalion, 1st Punjab Regiment	1,200	
40th Battalion, 1st Punjab Regiment	1,200	
41st Battalion, 1st Punjab Regiment	1,200	
42nd Battalion, 1st Punjab Regiment	1,200	
43rd Battalion, 1st Punjab Regiment	1,200	
44th Battalion, 1st Punjab Regiment	1,200	
45th Battalion, 1st Punjab Regiment	1,200	
46th Battalion, 1st Punjab Regiment	1,200	
47th Battalion, 1st Punjab Regiment	1,200	
48th Battalion, 1st Punjab Regiment	1,200	
49th Battalion, 1st Punjab Regiment	1,200	
50th Battalion, 1st Punjab Regiment	1,200	
51st Battalion, 1st Punjab Regiment	1,200	
52nd Battalion, 1st Punjab Regiment	1,200	
53rd Battalion, 1st Punjab Regiment	1,200	
54th Battalion, 1st Punjab Regiment	1,200	
55th Battalion, 1st Punjab Regiment	1,200	
56th Battalion, 1st Punjab Regiment	1,200	
57th Battalion, 1st Punjab Regiment	1,200	
58th Battalion, 1st Punjab Regiment	1,200	
59th Battalion, 1st Punjab Regiment	1,200	
60th Battalion, 1st Punjab Regiment	1,200	
61st Battalion, 1st Punjab Regiment	1,200	
62nd Battalion, 1st Punjab Regiment	1,200	
63rd Battalion, 1st Punjab Regiment	1,200	
64th Battalion, 1st Punjab Regiment	1,200	
65th Battalion, 1st Punjab Regiment	1,200	
66th Battalion, 1st Punjab Regiment	1,200	
67th Battalion, 1st Punjab Regiment	1,200	
68th Battalion, 1st Punjab Regiment	1,200	
69th Battalion, 1st Punjab Regiment	1,200	
70th Battalion, 1st Punjab Regiment	1,200	
71st Battalion, 1st Punjab Regiment	1,200	
72nd Battalion, 1st Punjab Regiment	1,200	
73rd Battalion, 1st Punjab Regiment	1,200	
74th Battalion, 1st Punjab Regiment	1,200	
75th Battalion, 1st Punjab Regiment	1,200	
76th Battalion, 1st Punjab Regiment	1,200	
77th Battalion, 1st Punjab Regiment	1,200	
78th Battalion, 1st Punjab Regiment	1,200	
79th Battalion, 1st Punjab Regiment	1,200	
80th Battalion, 1st Punjab Regiment	1,200	
81st Battalion, 1st Punjab Regiment	1,200	
82nd Battalion, 1st Punjab Regiment	1,200	
83rd Battalion, 1st Punjab Regiment	1,200	
84th Battalion, 1st Punjab Regiment	1,200	
85th Battalion, 1st Punjab Regiment	1,200	
86th Battalion, 1st Punjab Regiment	1,200	
87th Battalion, 1st Punjab Regiment	1,200	
88th Battalion, 1st Punjab Regiment	1,200	
89th Battalion, 1st Punjab Regiment	1,200	
90th Battalion, 1st Punjab Regiment	1,200	
91st Battalion, 1st Punjab Regiment	1,200	
92nd Battalion, 1st Punjab Regiment	1,200	
93rd Battalion, 1st Punjab Regiment	1,200	
94th Battalion, 1st Punjab Regiment	1,200	
95th Battalion, 1st Punjab Regiment	1,200	
96th Battalion, 1st Punjab Regiment	1,200	
97th Battalion, 1st Punjab Regiment	1,200	
98th Battalion, 1st Punjab Regiment	1,200	
99th Battalion, 1st Punjab Regiment	1,200	
100th Battalion, 1st Punjab Regiment	1,200	

**'RETURN SHOWING THE ACTUAL STRENGTH OF THE ARMY AND ROYAL AIR FORCE IN INDIA INCLUDING PERSIAN GULF PORTS, THE E.P. FORCE, S. PERSIA AND S.E. PERSIA AND ADEN ON THE 1ST NOVEMBER 1922' [435r] (53/78)**

(435)

MILITARY POLICE AND LEVIES

Regiment	Strength	Remarks
1st Battalion	100	
2nd Battalion	100	
3rd Battalion	100	
4th Battalion	100	
5th Battalion	100	
6th Battalion	100	
7th Battalion	100	
8th Battalion	100	
9th Battalion	100	
10th Battalion	100	
11th Battalion	100	
12th Battalion	100	
13th Battalion	100	
14th Battalion	100	
15th Battalion	100	
16th Battalion	100	
17th Battalion	100	
18th Battalion	100	
19th Battalion	100	
20th Battalion	100	
21st Battalion	100	
22nd Battalion	100	
23rd Battalion	100	
24th Battalion	100	
25th Battalion	100	
26th Battalion	100	
27th Battalion	100	
28th Battalion	100	
29th Battalion	100	
30th Battalion	100	
31st Battalion	100	
32nd Battalion	100	
33rd Battalion	100	
34th Battalion	100	
35th Battalion	100	
36th Battalion	100	
37th Battalion	100	
38th Battalion	100	
39th Battalion	100	
40th Battalion	100	
41st Battalion	100	
42nd Battalion	100	
43rd Battalion	100	
44th Battalion	100	
45th Battalion	100	
46th Battalion	100	
47th Battalion	100	
48th Battalion	100	
49th Battalion	100	
50th Battalion	100	
51st Battalion	100	
52nd Battalion	100	
53rd Battalion	100	
54th Battalion	100	
55th Battalion	100	
56th Battalion	100	
57th Battalion	100	
58th Battalion	100	
59th Battalion	100	
60th Battalion	100	
61st Battalion	100	
62nd Battalion	100	
63rd Battalion	100	
64th Battalion	100	
65th Battalion	100	
66th Battalion	100	
67th Battalion	100	
68th Battalion	100	
69th Battalion	100	
70th Battalion	100	
71st Battalion	100	
72nd Battalion	100	
73rd Battalion	100	
74th Battalion	100	
75th Battalion	100	
76th Battalion	100	
77th Battalion	100	
78th Battalion	100	
79th Battalion	100	
80th Battalion	100	
81st Battalion	100	
82nd Battalion	100	
83rd Battalion	100	
84th Battalion	100	
85th Battalion	100	
86th Battalion	100	
87th Battalion	100	
88th Battalion	100	
89th Battalion	100	
90th Battalion	100	
91st Battalion	100	
92nd Battalion	100	
93rd Battalion	100	
94th Battalion	100	
95th Battalion	100	
96th Battalion	100	
97th Battalion	100	
98th Battalion	100	
99th Battalion	100	
100th Battalion	100	

**COMBATANT SERVICES.**

Military Police and Levies.

'RETURN SHOWING THE ACTUAL STRENGTH OF THE ARMY AND ROYAL AIR FORCE IN INDIA INCLUDING PERSIAN GULF PORTS, THE E.P. FORCE, S. PERSIA AND S.E. PERSIA AND ADEN ON THE 1ST NOVEMBER 1922' [435v] (54/78)

48

MILITARY POLICE AND LEVIES.

Units.	Mounted.	Foot.
Swat Levies ... ..	80	177
Dir Levies ... ..	81	354
Kurram Militia ... ..	106	1,232
South Waziristan Scouts ... ..	96	1,269
Tochi Scouts ... ..	112	1,793
Baluch Levy ... ..	...	200
1st Lushai Hills Battalion, Assam Rifles	5	828
2nd (Lakhimpur) Battalion, " "	...	794
3rd (Naga Hills) Battalion, " "	...	803
4th Battalion, Assam Rifles	...	762
5th " " "	...	786
Dacca Battalion	...	827
Mekran Levy Corps	...	613
Mewar Bhil Corps	...	653
Malwa Bhil Corps	...	595
Chin Hills Battalion	29	794
Bhamo Battalion	74	902
Myitkyina Battalion	74	1,602
North-West Border Battalion (Chindwin Battalion)	68	1,276
Northern Shan States Battalion (Lashio)	74	591
Southern Shan States Battalion	93	839
Putao Battalion	22	536
Shwebo Battalion	21	694
Mandalay Battalion	126	1,029
Carried over	961	10,949

Rangoon Battal  
Tango Battal  
Assam Hill Tr  
Reserve Battal



'RETURN SHOWING THE ACTUAL STRENGTH OF THE ARMY AND ROYAL AIR FORCE IN INDIA INCLUDING PERSIAN GULF PORTS, THE E.P. FORCE, S. PERSIA AND S.E. PERSIA AND ADEN ON THE 1ST NOVEMBER 1922' [436r] (55/78)

(476)

MILITARY POLICE AND LEVIES—*contd.* 49

Units.	Mounted.	Foot.
Brought forward ...	961	19,949
Rangoon Battalion ... ..	115	1,989
Toungoo Battalion ... ..	30	1,936
Arakan Hill Tracts Battalion ... ..	...	156
Reserve Battalion ... ..	144	752
TOTAL ...	1,250	24,782

**'RETURN SHOWING THE ACTUAL STRENGTH OF THE ARMY AND ROYAL AIR FORCE IN INDIA INCLUDING PERSIAN GULF PORTS, THE E.P. FORCE, S. PERSIA AND S.E. PERSIA AND ADEN ON THE 1ST NOVEMBER 1922' [436v] (56/78)**

MILITARY FORCE AND EQUIPMENT

Regiment	Strength	Remarks	Location	Notes
1st Battalion	100	...	...	...
2nd Battalion	100	...	...	...
3rd Battalion	100	...	...	...
4th Battalion	100	...	...	...
5th Battalion	100	...	...	...
6th Battalion	100	...	...	...
7th Battalion	100	...	...	...
8th Battalion	100	...	...	...
9th Battalion	100	...	...	...
10th Battalion	100	...	...	...
11th Battalion	100	...	...	...
12th Battalion	100	...	...	...
13th Battalion	100	...	...	...
14th Battalion	100	...	...	...
15th Battalion	100	...	...	...
16th Battalion	100	...	...	...
17th Battalion	100	...	...	...
18th Battalion	100	...	...	...
19th Battalion	100	...	...	...
20th Battalion	100	...	...	...
21st Battalion	100	...	...	...
22nd Battalion	100	...	...	...
23rd Battalion	100	...	...	...
24th Battalion	100	...	...	...
25th Battalion	100	...	...	...
26th Battalion	100	...	...	...
27th Battalion	100	...	...	...
28th Battalion	100	...	...	...
29th Battalion	100	...	...	...
30th Battalion	100	...	...	...
31st Battalion	100	...	...	...
32nd Battalion	100	...	...	...
33rd Battalion	100	...	...	...
34th Battalion	100	...	...	...
35th Battalion	100	...	...	...
36th Battalion	100	...	...	...
37th Battalion	100	...	...	...
38th Battalion	100	...	...	...
39th Battalion	100	...	...	...
40th Battalion	100	...	...	...
41st Battalion	100	...	...	...
42nd Battalion	100	...	...	...
43rd Battalion	100	...	...	...
44th Battalion	100	...	...	...
45th Battalion	100	...	...	...
46th Battalion	100	...	...	...
47th Battalion	100	...	...	...
48th Battalion	100	...	...	...
49th Battalion	100	...	...	...
50th Battalion	100	...	...	...
51st Battalion	100	...	...	...
52nd Battalion	100	...	...	...
53rd Battalion	100	...	...	...
54th Battalion	100	...	...	...
55th Battalion	100	...	...	...
56th Battalion	100	...	...	...
57th Battalion	100	...	...	...
58th Battalion	100	...	...	...
59th Battalion	100	...	...	...
60th Battalion	100	...	...	...
61st Battalion	100	...	...	...
62nd Battalion	100	...	...	...
63rd Battalion	100	...	...	...
64th Battalion	100	...	...	...
65th Battalion	100	...	...	...
66th Battalion	100	...	...	...
67th Battalion	100	...	...	...
68th Battalion	100	...	...	...
69th Battalion	100	...	...	...
70th Battalion	100	...	...	...
71st Battalion	100	...	...	...
72nd Battalion	100	...	...	...
73rd Battalion	100	...	...	...
74th Battalion	100	...	...	...
75th Battalion	100	...	...	...
76th Battalion	100	...	...	...
77th Battalion	100	...	...	...
78th Battalion	100	...	...	...
79th Battalion	100	...	...	...
80th Battalion	100	...	...	...
81st Battalion	100	...	...	...
82nd Battalion	100	...	...	...
83rd Battalion	100	...	...	...
84th Battalion	100	...	...	...
85th Battalion	100	...	...	...
86th Battalion	100	...	...	...
87th Battalion	100	...	...	...
88th Battalion	100	...	...	...
89th Battalion	100	...	...	...
90th Battalion	100	...	...	...
91st Battalion	100	...	...	...
92nd Battalion	100	...	...	...
93rd Battalion	100	...	...	...
94th Battalion	100	...	...	...
95th Battalion	100	...	...	...
96th Battalion	100	...	...	...
97th Battalion	100	...	...	...
98th Battalion	100	...	...	...
99th Battalion	100	...	...	...
100th Battalion	100	...	...	...

**'RETURN SHOWING THE ACTUAL STRENGTH OF THE ARMY AND ROYAL AIR FORCE IN INDIA INCLUDING PERSIAN GULF PORTS, THE E.P. FORCE, S. PERSIA AND S.E. PERSIA AND ADEN ON THE 1ST NOVEMBER 1922' [437r] (57/78)**

(437)

IMPERIAL SERVICE TROOPS.

- Cavalry -

Regiment	Actual strength	Authorized strength	Remarks
1st Cavalry	200	200	
2nd Cavalry	200	200	
3rd Cavalry	200	200	
4th Cavalry	200	200	
5th Cavalry	200	200	
6th Cavalry	200	200	
7th Cavalry	200	200	
8th Cavalry	200	200	
9th Cavalry	200	200	
10th Cavalry	200	200	
11th Cavalry	200	200	
12th Cavalry	200	200	
13th Cavalry	200	200	
14th Cavalry	200	200	
15th Cavalry	200	200	
16th Cavalry	200	200	
17th Cavalry	200	200	
18th Cavalry	200	200	
19th Cavalry	200	200	
20th Cavalry	200	200	
21st Cavalry	200	200	
22nd Cavalry	200	200	
23rd Cavalry	200	200	
24th Cavalry	200	200	
25th Cavalry	200	200	
26th Cavalry	200	200	
27th Cavalry	200	200	
28th Cavalry	200	200	
29th Cavalry	200	200	
30th Cavalry	200	200	
31st Cavalry	200	200	
32nd Cavalry	200	200	
33rd Cavalry	200	200	
34th Cavalry	200	200	
35th Cavalry	200	200	
36th Cavalry	200	200	
37th Cavalry	200	200	
38th Cavalry	200	200	
39th Cavalry	200	200	
40th Cavalry	200	200	
41st Cavalry	200	200	
42nd Cavalry	200	200	
43rd Cavalry	200	200	
44th Cavalry	200	200	
45th Cavalry	200	200	
46th Cavalry	200	200	
47th Cavalry	200	200	
48th Cavalry	200	200	
49th Cavalry	200	200	
50th Cavalry	200	200	
51st Cavalry	200	200	
52nd Cavalry	200	200	
53rd Cavalry	200	200	
54th Cavalry	200	200	
55th Cavalry	200	200	
56th Cavalry	200	200	
57th Cavalry	200	200	
58th Cavalry	200	200	
59th Cavalry	200	200	
60th Cavalry	200	200	
61st Cavalry	200	200	
62nd Cavalry	200	200	
63rd Cavalry	200	200	
64th Cavalry	200	200	
65th Cavalry	200	200	
66th Cavalry	200	200	
67th Cavalry	200	200	
68th Cavalry	200	200	
69th Cavalry	200	200	
70th Cavalry	200	200	
71st Cavalry	200	200	
72nd Cavalry	200	200	
73rd Cavalry	200	200	
74th Cavalry	200	200	
75th Cavalry	200	200	
76th Cavalry	200	200	
77th Cavalry	200	200	
78th Cavalry	200	200	
79th Cavalry	200	200	
80th Cavalry	200	200	
81st Cavalry	200	200	
82nd Cavalry	200	200	
83rd Cavalry	200	200	
84th Cavalry	200	200	
85th Cavalry	200	200	
86th Cavalry	200	200	
87th Cavalry	200	200	
88th Cavalry	200	200	
89th Cavalry	200	200	
90th Cavalry	200	200	
91st Cavalry	200	200	
92nd Cavalry	200	200	
93rd Cavalry	200	200	
94th Cavalry	200	200	
95th Cavalry	200	200	
96th Cavalry	200	200	
97th Cavalry	200	200	
98th Cavalry	200	200	
99th Cavalry	200	200	
100th Cavalry	200	200	

**COMBATANT SERVICES.**

Imperial Service Troops.

'RETURN SHOWING THE ACTUAL STRENGTH OF THE ARMY AND ROYAL AIR FORCE IN INDIA INCLUDING PERSIAN GULF PORTS, THE E.P. FORCE, S. PERSIA AND S.E. PERSIA AND ADEN ON THE 1ST NOVEMBER 1922' [437v] (58/78)

53

IMPERIAL SERVICE TROOPS.

CAVALRY.

Units.	Authorised strength.	Actual strength.	REMARKS.
<b>Cavalry.</b>			
Kashmir Lancers (Body Guard) ... ..	253	192	
Patiala ("Rajindra") Lancers ... ..	600	556	
1st Jodhpur Lancers ... ..	667	645	("Sardar Risala")
2nd Jodhpur Lancers ... ..			
Alwar Lancers ... ..	451	370	
Rampur Lancers ... ..	315	293	
1st Gwalior Lancers ... ..	529	400	
2nd Gwalior Lancers ... ..	529	393	
3rd Gwalior Lancers ... ..	529	420	
Bhopal ("Victoria") Lancers... ..	125	116	
Indore Mounted Escort ... ..	200	113	
Mysore Lancers ... ..	520	441	
Hyderabad 1st Lancers ... ..	634	287	
Hyderabad 2nd Lancers ... ..	632	432	
Bhavnagar Lancers ... ..	268	210	
Navanagar Lancers ... ..	284	119	
Junagadh Lancers ... ..	173	79	
Idar Despatch Riders ... ..	32	1	
Rutlam Despatch Riders ... ..	5	5	
Udaipur Lancers ... ..	150	110	
TOTAL ... ..	6,896	5,182	
<b>Artillery.</b>			
1st Kashmir Mountain Battery ... ..	263	168	
2nd Kashmir Mountain Battery ... ..	263	237	
Kashmir Artillery Depot .. ..	100	40	
TOTAL ... ..	626	445	
<b>Sappers and Miners.</b>			
Sirmour Sappers ... ..	141	133	
Maler Kotla Sappers ... ..	171	140	
Faridkot Sappers .. ..	133	120	
Tehri (Garhwal) Sappers ... ..	175	202	
TOTAL .. ..	620	595	

'RETURN SHOWING THE ACTUAL STRENGTH OF THE ARMY AND ROYAL AIR FORCE IN INDIA INCLUDING PERSIAN GULF PORTS, THE E.P. FORCE, S. PERSIA AND S.E. PERSIA AND ADEN ON THE 1ST NOVEMBER 1922' [438r] (59/78)

(438)

IMPERIAL SERVICE TROOPS—*contd.* 53

INFANTRY.

Units.	Authorised strength.	Actual strength.	REMARKS.
<b>Infantry.</b>			
1st Kashmir Infantry ("Raghu Partab")...	871	723	
2nd Kashmir Rifles ("Body Guard") ...	871	753	
3rd Kashmir Rifles ("Raghunath") ...	871	771	
4th Kashmir Infantry (Training Battalion)	97	66	
1st Patiala Infantry ...	600	408	
2nd Patiala Infantry ...	600	390	
Jind Infantry ...	700	479	
Nabha Infantry ...	600	392	
Kapurthala Infantry ("Jagatjit") ...	500	456	
Alwar Infantry ...	830	657	
Bharatpur Infantry ...	817	407	
3rd Gwalior Infantry ...	838	737	
4th Gwalior Infantry ...	838	699	
Bikaner Infantry ...	500	299	
Rampur Infantry ...	672	603	
Bhopal Sultanah Pioneers ...	800	313	
<b>TOTAL</b> ...	<b>11,005</b>	<b>8,278</b>	
<b>Camel Corps.</b>			
Bikaner Camel Corps ("Ganga Bisala") ...	501	235	
Bahawalpur Mounted Rifles and Infantry ...	734	254	
Khairpur Mounted Rifles ...	40	37	
<b>TOTAL</b> ...	<b>1,275</b>	<b>626</b>	
<b>Transport Corps.</b>			
Jaipur Transport Corps ...	780	632	
Gwalior Transport Corps ...	274	259	
Bharatpur Transport Corps ...	502	240	
Khairpur Camel Transport ...	120	93	
Mysore Transport Corps ...	490	237	
Indore Transport Corps ...	318	181	
<b>TOTAL</b> ...	<b>2,484</b>	<b>1,642</b>	

C18rA

'RETURN SHOWING THE ACTUAL STRENGTH OF THE ARMY AND ROYAL AIR FORCE IN INDIA INCLUDING PERSIAN GULF PORTS, THE E.P. FORCE, S. PERSIA AND S.E. PERSIA AND ADEN ON THE 1ST NOVEMBER 1922' [438v] (60/78)

54

MISCELLANEOUS UNITS.

Units.	SANCTIONED ESTABLISHMENT.					ACTUAL STRENGTH.					
	British Officers.	British Other Ranks.	Indian Officers.	Indian Other Ranks.	Followers.	British Officers.	British Other Ranks.	Indian Officers.	Indian Other Ranks.	Followers.	
His Excellency the Viceroy's Band.	...	36	...	...	...	...	26	...	...	...	
His Excellency the Governor of Bengal's Band.	...	28	...	...	...	...	26	...	...	...	
His Excellency the Governor of Bombay's Band.	...	28	...	...	...	...	27	...	...	...	
TOTAL	...	92	...	...	...	...	79	...	...	...	
Governor General's Body Guard	2	...	4	117	72	2	...	4	117	72	
Governor's Body Guard, Madras	2	...	2	70	38	2	...	2	70	38	
Governor's Body Guard, Bombay	2	...	2	68	36	2	...	2	68	36	
Governor's Body Guard, Bengal	2	...	2	70	43	2	...	2	69	43	
TOTAL	...	8	...	10	325	189	8	...	10	324	189
Resident's Escort (Nepal)	...	...	...	2	79	8	...	...	2	79	8
GRAND TOTAL	...	8	92	12	404	197	8	79	12	403	197

**'RETURN SHOWING THE ACTUAL STRENGTH OF THE ARMY AND ROYAL AIR FORCE IN INDIA INCLUDING PERSIAN GULF PORTS, THE E.P. FORCE, S. PERSIA AND S.E. PERSIA AND ADEN ON THE 1ST NOVEMBER 1922' [439r] (61/78)**

(439)

Serial No.	Name of the Officer	Rank	Age	Years of Service	Regiment	Place	Remarks
8	...	...	...	...	...	...	...
9	...	...	...	...	...	...	...
10	...	...	...	...	...	...	...
11	...	...	...	...	...	...	...
12	...	...	...	...	...	...	...
13	...	...	...	...	...	...	...
14	...	...	...	...	...	...	...
15	...	...	...	...	...	...	...
16	...	...	...	...	...	...	...
17	...	...	...	...	...	...	...
18	...	...	...	...	...	...	...
19	...	...	...	...	...	...	...
20	...	...	...	...	...	...	...
21	...	...	...	...	...	...	...
22	...	...	...	...	...	...	...
23	...	...	...	...	...	...	...
24	...	...	...	...	...	...	...
25	...	...	...	...	...	...	...
26	...	...	...	...	...	...	...
27	...	...	...	...	...	...	...
28	...	...	...	...	...	...	...
29	...	...	...	...	...	...	...
30	...	...	...	...	...	...	...
31	...	...	...	...	...	...	...
32	...	...	...	...	...	...	...
33	...	...	...	...	...	...	...
34	...	...	...	...	...	...	...
35	...	...	...	...	...	...	...
36	...	...	...	...	...	...	...
37	...	...	...	...	...	...	...
38	...	...	...	...	...	...	...
39	...	...	...	...	...	...	...
40	...	...	...	...	...	...	...
41	...	...	...	...	...	...	...
42	...	...	...	...	...	...	...
43	...	...	...	...	...	...	...
44	...	...	...	...	...	...	...
45	...	...	...	...	...	...	...
46	...	...	...	...	...	...	...
47	...	...	...	...	...	...	...
48	...	...	...	...	...	...	...
49	...	...	...	...	...	...	...
50	...	...	...	...	...	...	...
51	...	...	...	...	...	...	...
52	...	...	...	...	...	...	...
53	...	...	...	...	...	...	...
54	...	...	...	...	...	...	...
55	...	...	...	...	...	...	...
56	...	...	...	...	...	...	...
57	...	...	...	...	...	...	...
58	...	...	...	...	...	...	...
59	...	...	...	...	...	...	...
60	...	...	...	...	...	...	...
61	...	...	...	...	...	...	...
62	...	...	...	...	...	...	...
63	...	...	...	...	...	...	...
64	...	...	...	...	...	...	...
65	...	...	...	...	...	...	...
66	...	...	...	...	...	...	...
67	...	...	...	...	...	...	...
68	...	...	...	...	...	...	...
69	...	...	...	...	...	...	...
70	...	...	...	...	...	...	...
71	...	...	...	...	...	...	...
72	...	...	...	...	...	...	...
73	...	...	...	...	...	...	...
74	...	...	...	...	...	...	...
75	...	...	...	...	...	...	...
76	...	...	...	...	...	...	...
77	...	...	...	...	...	...	...
78	...	...	...	...	...	...	...
79	...	...	...	...	...	...	...
80	...	...	...	...	...	...	...
81	...	...	...	...	...	...	...
82	...	...	...	...	...	...	...
83	...	...	...	...	...	...	...
84	...	...	...	...	...	...	...
85	...	...	...	...	...	...	...
86	...	...	...	...	...	...	...
87	...	...	...	...	...	...	...
88	...	...	...	...	...	...	...
89	...	...	...	...	...	...	...
90	...	...	...	...	...	...	...
91	...	...	...	...	...	...	...
92	...	...	...	...	...	...	...
93	...	...	...	...	...	...	...
94	...	...	...	...	...	...	...
95	...	...	...	...	...	...	...
96	...	...	...	...	...	...	...
97	...	...	...	...	...	...	...
98	...	...	...	...	...	...	...
99	...	...	...	...	...	...	...
100	...	...	...	...	...	...	...

**DEPARTMENTAL AND ADMINISTRATIVE SERVICES.**

'RETURN SHOWING THE ACTUAL STRENGTH OF THE ARMY AND ROYAL AIR FORCE IN INDIA INCLUDING PERSIAN GULF PORTS, THE E.P. FORCE, S. PERSIA AND S.E. PERSIA AND ADEN ON THE 1ST NOVEMBER 1922' [439v] (62/78)

56

MEDICAL SERVICES.

Units.	*SANCTIONED ESTABLISHMENT.					*ACTUAL STRENGTH.				
	British Officers.	British Other Ranks.	I. Os. & I. O. Rs.	Civilians.	Followers.	British Officers.	British Other Ranks.	I. Os. & I. O. Rs.	Civilians.	Followers.
Officers, R. A. M. C. ...	333	...	...	...	...	312	...	...	...	...
„ I. M. S. ...	495	...	...	...	...	446	...	...	...	...
Other Ranks, R. A. M. C. ...	...	480	...	...	...	...	436	...	...	...
Queen Alexandra's Military Nursing Service for India.	...	...	...	276	...	...	...	...	268	...
Indian Subordinate Medical Department—										
Assistant Surgeons ...	...	411	...	...	...	...	436	...	...	...
Sub-Assistant Surgeons ...	...	...	753	...	...	...	...	884	...	...
Indian Hospital Corps ...	...	...	12,308	...	...	...	...	12,851	...	...
Dental Surgeons ...	18	...	...	...	...	15	...	...	...	...
TOTAL ...	846	891	13,056	276	...	773	872	13,735	268	...

\*Includes Aden and Persia.



'RETURN SHOWING THE ACTUAL STRENGTH OF THE ARMY AND ROYAL AIR FORCE IN INDIA INCLUDING PERSIAN GULF PORTS, THE E.P. FORCE, S. PERSIA AND S.E. PERSIA AND ADEN ON THE 1ST NOVEMBER 1922' [440r] (63/78)

440

SUPPLY SERVICES. 57

Units.	SANCTIONED ESTABLISHMENT.						ACTUAL STRENGTH.						
	British Officers.	British Other Ranks.	I. Oa. & Indian Other Ranks.	CIVILIANS.		Fol- lowers.	British Officers.	British Other Ranks.	I. Oa. & Indian Other Ranks.	CIVILIANS.		Fol- lowers.	
				Euro- pean.	Indian.					Euro- pean.	Indian.		
S. and T. Record Office	7	33	...	...	60	12	7	37	...	...	101	21	
„ Training School	4	1	...	...	1	3	4	3	...	...	1	...	
S. and T. Corps Person- nel and Depot.	...	...	...	...	...	...	2	7	...	...	29	87	
Supply units	80	225	73	...	222	2,475	97	262	2	...	252	1,943	
„ „ (Aden)	4	3	...	...	30	113	3	3	...	...	32	71	
„ „ (Persia)	...	...	...	...	3	7	...	...	...	...	...	...	
Supply Depot Compa- nies.	108	183	...	...	580	2,443	136	238	...	...	756	2,138	
Directorate of Stocks...	6	...	...	...	18	8	6	1	...	...	18	8	
<b>TOTAL</b>	...	209	445	73	...	923	5,061	255	551	2	...	1,189	4,268

'RETURN SHOWING THE ACTUAL STRENGTH OF THE ARMY AND ROYAL AIR FORCE IN INDIA INCLUDING PERSIAN GULF PORTS, THE E.P. FORCE, S. PERSIA AND S.E. PERSIA AND ADEN ON THE 1ST NOVEMBER 1922' [440v] (64/78)

MECHANICAL TRANSPORT.

Units.	SANCTIONED ESTABLISHMENT.						ACTUAL STRENGTH.								
	British Officers.	British Other Ranks.	I. Os. and Indian Other Ranks.	CIVILIANS.			Followers.	British Officers.	British Other Ranks.	I. Os. and Indian Other Ranks.	CIVILIANS.			Followers.	
				European.	Clerks and Storekeepers.	Indian artificers.					European.	Clerks and Storekeepers.	Indian artificers.		
Headquarters, M. T. Columns.	10	...	10	...	25	...	10	10	2	8	...	25	...	7	
Motor Ambulance Convoys.	30	70	540	...	30	250	210	21	49	552	...	16	166	204	
Heavy M. T. Companies	41	160	1,197	...	30	336	289	39	184	1,241	...	24	274	256	
Ford Van Companies	6	9	187	...	3	85	15	14	27	555	...	8	87	46	
Khyber Ropeway Company.	5	4	24	...	35	62	418	4	5	26	...	32	65	408	
Mobile Repair Units	12	16	72	16	12	116	12	11	36	85	4	13	112	28	
M. T. Companies attached Medium Batteries.	15	468	...	...	...	...	39	12	272	...	...	...	...	18	
M. T. Training School	5	43	217	4	5	10	14	10	27	231	...	13	0	26	
C. M. T. Stores Depot	8	14	5	...	94	31	98	8	13	5	...	93	22	69	
Reserve Vehicle Park	3	6	167	...	4	19	17	4	5	88	...	4	19	...	
M. T. Shipping Section	...	2	2	...	1	2	...	...	2	...	...	1	2	...	
Base M. T. Workshops	11	34	15	327	30	896	178	14	55	14	164	31	873	166	
Technical Inspectors...	3	...	3	...	6	...	12	4	...	1	...	4	...	2	
S. and T. Records, Ambala.	...	...	...	...	...	...	...	...	29	40	...	2	3	34	
M. T., Aden	...	1	16	48	...	2	14	13	1	12	20	...	2	15	6
M. T., Persia	...	...	...	4	...	...	...	...	...	...	...	...	...	...	
<b>TOTAL</b>	...	150	842	2,491	347	277	1,801	1,325	152	721	2,866	168	363	1,648	1,268

'RETURN SHOWING THE ACTUAL STRENGTH OF THE ARMY AND ROYAL AIR FORCE IN INDIA INCLUDING PERSIAN GULF PORTS, THE E.P. FORCE, S. PERSIA AND S.E. PERSIA AND ADEN ON THE 1ST NOVEMBER 1922' [441r] (65/78)

(44)

ANIMAL TRANSPORT. 59

Units.	SANCTIONED ESTABLISHMENT.					ACTUAL STRENGTH.				
	British Officers.	British Other Ranks.	I. Os. and Indian Other Ranks.	Civilians.	Followers.	British Officers.	British Other Ranks.	I. Os. and Indian Other Ranks.	Civilians.	Followers.
<b>Mule Corps Units.</b>										
1st Pack Mule Corps						1	2	384	2	57
2nd " " "						2	2	397	2	49
3rd " " "						1	2	399	2	60
5th " " "						1	2	394	2	59
6th " " "						1	1	380	2	49
7th " " "						1	2	390	2	54
8th " " "	12	23	4,474	23	679	2	2	359	2	54
9th " " "						2	2	448	2	52
10th " " "						1	2	383	2	62
11th " " "						1	2	412	2	51
12th " " "						1	2	403	2	54
13th " " "						1	1	200	1	30
14th " " Cadre						1	2	101	2	42
15th " " "						1	2	103	2	40
16th " " "						1	2	96	2	44
17th " " "						1	2	103	2	44
18th " " "						1	2	97	2	43
19th " " "	12	24	1,248	24	540	1	1	104	2	43
20th " " "						1	2	96	2	44
21st " " "						1	2	444	2	48
22nd " " "						1	2	99	2	43
23rd " " "						1	2	104	2	45
24th " " "						1	2	105	2	39
25th " " "						1	2	115	2	35
Carried over	24	47	5,722	47	1,219	27	45	6,146	47	1,141

**'RETURN SHOWING THE ACTUAL STRENGTH OF THE ARMY AND ROYAL AIR FORCE IN INDIA INCLUDING PERSIAN GULF PORTS, THE E.P. FORCE, S. PERSIA AND S.E. PERSIA AND ADEN ON THE 1ST NOVEMBER 1922' [441v] (66/78)**

60

**ANIMAL TRANSPORT—contd.**

Units.	SANCTIONED ESTABLISHMENT.					ACTUAL STRENGTH.				
	British Officers.	British Other Ranks.	I. Os. and Indian Other Ranks.	Civilians.	Follow-ers.	British Officers.	British Other Ranks.	I. Os. and Indian Other Ranks.	Civilians.	Follow-ers.
Brought forward ...	24	47	5,722	47	1,219	27	45	6,146	47	1,141
<b>Mule Corps Units—contd.</b>										
26th D. Mule Corps ...						2	2	479	2	57
27th " " ...						1	2	532	2	66
28th " " ...	5	10	2,432	10	337	2	2	493	2	67
29th " " ...						2	2	537	2	67
30th " " ...						1	3	369	2	51
31st " Cadre ...						1	2	134	2	54
33rd " " ...	2	4	270	4	114	1	2	122	2	53
<b>Cavalry Brigade Training Company</b>										
1st Cavalry Brigade Training Company.	3	6	999	9	213	1	2	309	3	63
2nd Cavalry Brigade Training Company.						1	2	320	3	60
3rd Cavalry Brigade Training Company.						1	2	328	3	69
TOTAL ...	34	67	9,423	70	1,883	40	66	9,769	70	1,757
<b>Mule Depôts:</b>										
A Mule Depôt ...						8	3	565	45	82
B " " ...	12	9	1,176	24	219	5	3	490	23	98
C " " ...						9	3	1,187	74	91
TOTAL ...	12	9	1,176	24	219	22	9	2,242	142	271
GRAND TOTAL ...	46	76	10,599	94	2,102	62	75	12,011	212	2,028

'RETURN SHOWING THE ACTUAL STRENGTH OF THE ARMY AND ROYAL AIR FORCE IN INDIA INCLUDING PERSIAN GULF PORTS, THE E.P. FORCE, S. PERSIA AND S.E. PERSIA AND ADEN ON THE 1ST NOVEMBER 1922' [442r] (67/78)

(442)

ANIMAL TRANSPORT—*contd.* 61

Units.	SANCTIONED ESTABLISHMENT.					ACTUAL STRENGTH.				
	British Officers.	British Other Ranks.	I. Os. and Indian Other Ranks.	Civilians.	Followers.	British Officers.	British Other Ranks.	I. Os. and Indian Other Ranks.	Civilians.	Followers.
<b>Government Camel Corps.</b>										
41st Government Camel Corps						1	...	392	1	13
42nd " " " "	4	...	1,576	8	112	2	...	424	2	22
43rd " " " "						2	...	409	2	21
44th " " " "						1	...	356	1	18
45th " " Cadre ...						1	...	137	3	19
47th " " " "	4	...	424	8	84	1	...	106	3	22
48th " " " "						1	...	327	2	22
49th " " " "						1	...	325	2	23
<b>TOTAL</b>	<b>8</b>	<b>...</b>	<b>2,000</b>	<b>16</b>	<b>196</b>	<b>10</b>	<b>...</b>	<b>2,476</b>	<b>16</b>	<b>160</b>
<b>50th Silladar Camel Corps</b>										
51st " " " "						1	...	32	2	343
52nd " " " "						1	...	31	2	331
53rd " " " "	8	...	256	16	2,944	1	...	31	2	350
54th " " " "						1	...	32	3	368
55th " " " "						1	...	30	2	325
56th " " " "						1	...	17	2	179
57th " " " "						1	...	32	2	364
No. 6 Camel Depôt...						4	...	426	17	15
<b>TOTAL</b>	<b>8</b>	<b>...</b>	<b>256</b>	<b>16</b>	<b>2,944</b>	<b>12</b>	<b>...</b>	<b>663</b>	<b>34</b>	<b>2,644</b>
<b>GRAND TOTAL CAMEL CORPS</b>	<b>16</b>	<b>...</b>	<b>2,256</b>	<b>32</b>	<b>3,140</b>	<b>22</b>	<b>...</b>	<b>3,139</b>	<b>50</b>	<b>2,804</b>

'RETURN SHOWING THE ACTUAL STRENGTH OF THE ARMY AND ROYAL AIR FORCE IN INDIA INCLUDING PERSIAN GULF PORTS, THE E.P. FORCE, S. PERSIA AND S.E. PERSIA AND ADEN ON THE 1ST NOVEMBER 1922' [442v] (68/78)

ANIMAL TRANSPORT—*concl.*

Units.	SANCTIONED ESTABLISHMENT.					ACTUAL STRENGTH.					
	British Officers.	British Other Ranks.	I. Os. and Indian Other Ranks.	Civilians.	Followers.	British Officers.	British Other Ranks.	I. Os. and Indian Other Ranks.	Civilians.	Followers.	
<b>Bullock Corps.</b>											
1 to 33 Bullock Half Troops ...	...	...	33	...	528	...	...	32	...	532	
34 to 36 " " " ...	...	...	...	...	...	...	...	4	...	70	
<b>TOTAL</b> ...	...	...	33	...	528	...	...	36	...	602	
<b>Miscellaneous Units.</b>											
Advanced Transport Depôt ...	...	...	...	...	...	1	1	65	4	23	
81st Local Transport Corps ...	...	...	...	...	...	1	5	303	2	52	
82nd " " " ...	...	...	...	...	...	1	5	415	2	50	
Aden Camel Corps ...	...	1	...	221	1	9	1	...	225	1	7
Gulf Ports Transport ...	...	...	...	25	...	2	...	...	18	...	2
Transport Establishment, Gilgit ...	...	...	...	52	...	4	...	...	45	...	10
<b>TOTAL</b> ...	...	1	...	298	1	15	4	11	1,071	9	149
Mule Corps Aden ...	...	1	2	154	1	26	1	2	154	1	25
Mule Driver Reservists ...	...	...	...	500	...	...	...	...	376	...	...

**'RETURN SHOWING THE ACTUAL STRENGTH OF THE ARMY AND ROYAL AIR FORCE IN INDIA INCLUDING PERSIAN GULF PORTS, THE E.P. FORCE, S. PERSIA AND S.E. PERSIA AND ADEN ON THE 1ST NOVEMBER 1922' [443r] (69/78)**

(443)

REMOUNT SERVICES. 63

Unit.	SANCTIONED ESTABLISHMENT.					ACTUAL STRENGTH.					Follow-ers.	
	British Officers.	British Other Ranks.	I. Os. & Indian Other Ranks.	CIVILIANS.		Follow-ers.	British Officers.	British Other Ranks.	I. Os. & Indian Other Ranks.	CIVILIANS.		
				Euro-pean.	Indian.					Euro-pean.		Indian.
Remount Depôts and Circles.	12	27	204	4	4,634		12	27	202	4	248	4,081
<b>Total</b> ...	12	27	204	4	4,634		12	27	202	4	248	4,081

'RETURN SHOWING THE ACTUAL STRENGTH OF THE ARMY AND ROYAL AIR FORCE IN INDIA INCLUDING PERSIAN GULF PORTS, THE E.P. FORCE, S. PERSIA AND S.E. PERSIA AND ADEN ON THE 1ST NOVEMBER 1922' [443v] (70/78)

64

VETERINARY SERVICES.

Unit.	SANCTIONED ESTABLISHMENT.						ACTUAL STRENGTH.						
	British Officers.	British Other Ranks.	I. Os. and Indian Other Ranks.	CIVILIANS.		Followers.	British Officers.	British Other Ranks.	I. Os. and Indian Other Ranks.	CIVILIANS.		Followers.	
				Euro-pean.	Indian.					Euro-pean.	Indian.		
Officers, R. A. V. C.	55	...	...	...	...	...	52	...	...	...	...	...	
Other Ranks, I. V. C.	}	12	...	...	...	...	...	13	...	...	...	...	
Other Ranks, R. A. V. C.													
Other Ranks, Vety. Asstts. I. V. C.	}	...	173	...	...	...	...	*	180	...	...	...	
Other Ranks, Vety. Asstts. S. & T.													
Other Ranks, Vety. Clerks.	...	...	...	...	48	...	...	...	...	...	41	...	
Other Ranks, Vety. Clerks Tempy.	...	...	...	...	...	...	...	...	...	...	9	...	
Indian Other Ranks, Veterinary Sections.	...	...	1,470	...	...	...	...	...	759	...	...	...	
Followers	...	...	...	...	...	121	...	...	...	...	...	84	
TOTAL	...	55	12	1,643	...	48	121	52	13	939	...	50	84

\* Includes 28 Veterinary Assistants employed in W. F.



**'RETURN SHOWING THE ACTUAL STRENGTH OF THE ARMY AND ROYAL AIR FORCE IN INDIA INCLUDING PERSIAN GULF PORTS, THE E.P. FORCE, S. PERSIA AND S.E. PERSIA AND ADEN ON THE 1ST NOVEMBER 1922' [444r] (71/78)**

(444)

**LABOUR CORPS AND DEPOTS.** 65

Units.	SANCTIONED ESTABLISHMENT.				ACTUAL STRENGTH.			
	British Officers.	British Other Ranks.	I. Os. and Indian Other Ranks.	Follow-ers.	British Officers.	British Other Ranks.	I. Os. and Indian Other Ranks.	Follow-ers.
99th Labour Corps ...	...	...	...	...	4	...	1,186	57
112th " " ...	...	...	...	...	3	...	1,160	55
<b>TOTAL</b> ...	...	...	...	...	7	...	2,346	112
<b>Labour Depots.</b>								
Lucknow Depot (late Sitapur) ...	...	...	...	...	3	...	510	73
<b>TOTAL</b> ...	...	...	...	...	3	...	510	73
<b>GRAND TOTAL</b> ...	...	...	...	...	10	...	2,856	185

CISFA

'RETURN SHOWING THE ACTUAL STRENGTH OF THE ARMY AND ROYAL AIR FORCE IN INDIA INCLUDING PERSIAN GULF PORTS, THE E.P. FORCE, S. PERSIA AND S.E. PERSIA AND ADEN ON THE 1ST NOVEMBER 1922' [444v] (72/78)

66

FOLLOWERS' CENTRAL DEPOTS.

Units.	SANCTIONED ESTABLISHMENT.				ACTUAL STRENGTH.			
	British Officers.	Indian Officers.	Indian Other Ranks.	Followers.	British Officers.	Indian Officers.	Indian Other Ranks.	Followers.
Kirkee ... ..	4	4	12	2,070	4	4	12	169
Meerut ... ..	4	4	12	2,070	4	4	12	28
TOTAL ... ..	8	8	24	4,140	(a) 8	(a) 8	(a) 24	(a) 197

(a) Cost debitable wholly to Imperial Funds.

Units.  
Government Magis  
trates and their  
Federal estab-  
lishment.

Total ...

'RETURN SHOWING THE ACTUAL STRENGTH OF THE ARMY AND ROYAL AIR FORCE IN INDIA INCLUDING PERSIAN GULF PORTS, THE E.P. FORCE, S. PERSIA AND S.E. PERSIA AND ADEN ON THE 1ST NOVEMBER 1922' [445r] (73/78)

(445)

CANTONMENT ESTABLISHMENT. 67

Units.	SANCTIONED ESTABLISHMENT.						ACTUAL STRENGTH.					
	British Officers.	British Other Ranks.	Indian Officers and Indian Other Ranks.	CIVILIANS.		Followers.	British Officers.	British Other Ranks.	Indian Officers and Indian Other Ranks.	CIVILIANS.		Followers.
				European.	Indian.					European.	Indian.	
Cantonment Magistrates and their Judicial establishment.	48	...	2	...	187	286	45	...	2	...	187	286
Total	48	...	2	...	187	286	45	...	2	...	187	286

'RETURN SHOWING THE ACTUAL STRENGTH OF THE ARMY AND ROYAL AIR FORCE IN INDIA INCLUDING PERSIAN GULF PORTS, THE E.P. FORCE, S. PERSIA AND S.E. PERSIA AND ADEN ON THE 1ST NOVEMBER 1922' [445v] (74/78)

68

EMBARKATION AND RAILWAY TRANSPORT STAFF.

Units.	SANCTIONED ESTABLISHMENT.					ACTUAL STRENGTH.				
	British Officers.	British Other Ranks.	CIVILIANS.			British Officers.	British Other Ranks.	CIVILIANS.		
			European.	Indian.	Followers.			European.	Indian.	Followers.
Embarkation Staff, Bombay ...	3	7	...	3	...	3	7	...	3	...
Embarkation Staff, Karachi ...	1	3	...	4	...	1	3	...	4	...
Embarkation Staff, Calcutta ...	1	2	...	1	...	1	2	...	1	...
Railway Transport Establishments	16	41	...	20	...	17	55	...	22	...
TOTAL ...	21	53	...	28	...	22	67	...	30	...

MILITARY FARMS DEPARTMENT (GRASS).

Units.	SANCTIONED ESTABLISHMENT.			ACTUAL STRENGTH.		
	British Officers.	Managers, Assistant Managers, British soldiers, Civilians and Engineers.	Indian Establishment.	British Officers.	Managers, Assistant Managers, British soldiers, Civilians and Engineers.	Indian Establishment.
Military Grass Farms ...	15	67	237	13	65	237
TOTAL ...	15	67	237	13	65	237

DAIRY FARMS.

Units.	SANCTIONED ESTABLISHMENT.			ACTUAL STRENGTH.		
	British Officers.	Managers, Assistant Managers, British soldiers, Civilians and Engineers.	Indian Establishment.	British Officers.	Managers, Assistant Managers, British soldiers, Civilians and Engineers.	Indian Establishment.
Dairy Farms ...	6	71	153	6	62	153
TOTAL ...	6	71	153	6	62	153

IN  
Office of Direct  
Stnla.  
Office of the  
Northern C  
Office of the Dep  
ern Comma  
Office of Assista  
Command.  
Office of Assista  
Command.  
Office of the Di  
vices, all I  
Clothing Facto  
Inspector of O  
Rawalpindi A  
Poonapore Ar  
Quetta Area  
Kirkree Area  
Allahabad Ar  
Madras Arsen  
Rangoon Arsen  
Port William C  
Karachi Depot  
Bombay Depot  
Agra Depot  
Ordnance Servis  
" "  
Jabalpore Ordn  
Aden Brigade  
South Persia  
Inspection Secti  
Temporary sec  
Supernumerarie  
Leave  
(a) 12 Arman  
Bahah units and s

**'RETURN SHOWING THE ACTUAL STRENGTH OF THE ARMY AND ROYAL AIR FORCE IN INDIA INCLUDING PERSIAN GULF PORTS, THE E.P. FORCE, S. PERSIA AND S.E. PERSIA AND ADEN ON THE 1ST NOVEMBER 1922' [446r] (75/78)**

(446)

INDIAN ORDNANCE DEPARTMENT (STORES SECTION). 69

	SANCTIONED ESTABLISHMENTS.				ACTUAL STRENGTH.			
	British Officers.	BRITISH OTHER RANKS.		Indian Other Ranks.	British Officers.	BRITISH OTHER RANKS.		Indian Other Ranks.
		Indian Ordnance Department.	R. A. O. C.			Indian Ordnance Department.	R. A. O. C.	
Office of Director of Equipment and Ordnance Stores, Simla.	15	...	...	...	13	32	3	...
Office of the Deputy Director of Ordnance Services, Northern Command.	1	...	...	...	1	3	2	...
Office of the Deputy Director of Ordnance Services, Southern Command.	1	...	...	...	1	1	...	...
Office of Assistant Director of Ordnance Services, Eastern Command.	...	...	...	...	...	...	...	...
Office of Assistant Director of Ordnance Services, Western Command.	...	...	...	...	...	...	...	...
Office of the Deputy Assistant Directors of Ordnance Services, all Districts.	2	...	...	...	2	7	...	...
Clothing Factories and Depots and Ordnance Boot Depot	14	48	...	149	15	46	2	92
Inspector of Ordnance Machinery	...	...	...	...	...	...	...	...
Rawalpindi Arsenal	...	...	...	...	...	...	...	...
Ferozepore Arsenal	...	...	...	...	...	...	...	...
Quetta Arsenal	...	...	...	...	...	...	...	...
Kirkee Arsenal	...	...	...	...	...	...	...	...
Allahabad Arsenal	...	...	...	...	...	...	...	...
Madras Arsenal	...	...	...	...	...	...	...	...
Rangoon Arsenal	...	...	...	...	...	...	...	...
Fort William Ordnance Depot	...	...	...	...	...	...	...	...
Karachi Depot	...	...	...	...	...	...	...	...
Bombay Depot	...	...	...	...	...	...	...	...
Agra Depot	...	...	...	...	...	...	...	...
Ordnance Services, Waziristan	...	...	...	...	...	...	...	...
"    "    Razmak and Tochi	...	...	...	...	...	...	...	...
Jubbulpore Ordnance Depot	...	...	...	...	...	...	...	...
Aden Brigade	...	...	...	...	...	...	...	...
South Persia	...	...	...	...	...	...	...	...
Inspection Section G. S. charge	...	...	...	...	...	...	...	...
Temporary seconded	...	...	...	...	...	...	...	...
Supernumeraries	...	...	...	...	...	...	...	...
Leave	...	...	...	...	...	...	...	...
TOTAL	143	514	397	1,654	124	485	(a) 203	1,506

(a) 12 Armament Artificers (B. A. O. C.) serving with Indian Sections and Defences have been excluded. 71 Armourers attached British units and serving with Factories and Inspection Sections have been excluded.

'RETURN SHOWING THE ACTUAL STRENGTH OF THE ARMY AND ROYAL AIR FORCE IN INDIA INCLUDING PERSIAN GULF PORTS, THE E.P. FORCE, S. PERSIA AND S.E. PERSIA AND ADEN ON THE 1ST NOVEMBER 1922' [446v] (76/78)

70 ALL RANKS EMPLOYED UNDER THE DIRECTOR-GENERAL OF ORDNANCE IN INDIA.

	SANCTIONED ESTABLISHMENT.					ACTUAL STRENGTH.				
	British Officers.	British Other Ranks.	Indian Other Ranks.	Civilians.		British Officers.	British Other Ranks.	Indian Other Ranks.	Civilians.	
				Gazett-ed.	Non-Gazett-ed.				Gazett-ed.	Non-Gazett-ed.
Office of Director-General of Ordnance in India,	5	...	...	...	...	6	4	...	...	...
Ordnance Factories	32	79	2	20	825	23	59	2	24	703
Ordnance Inspection Establishments (excluding Inspectors of Munitions and C. I. G. S. Charge).	11	22	28	2	62	12	22	28	2	59
<b>TOTAL</b>	<b>48</b>	<b>101</b>	<b>30</b>	<b>22</b>	<b>887</b>	<b>41</b>	<b>85</b>	<b>30</b>	<b>26</b>	<b>767</b>

(a) Includes lascars and Followers.

'RETURN SHOWING THE ACTUAL STRENGTH OF THE ARMY AND ROYAL AIR FORCE IN INDIA INCLUDING PERSIAN GULF PORTS, THE E.P. FORCE, S. PERSIA AND S.E. PERSIA AND ADEN ON THE 1ST NOVEMBER 1922' [447r] (77/78)

447  
71

MILITARY WORKS SERVICES.

	SANCTIONED ESTABLISHMENT.					ACTUAL STRENGTH.					
	British Officers.	British Other Ranks.	Indian Ranks.	Civilians.	Followers.	British Officers.	British Other Ranks.	Indian Ranks.	Civilians.	Followers.	
Military Works Services	188	315	...	787	536	149	221	1	1,989	1,282	
TOTAL	...	188	315	...	787	536	149	221	1	1,989	1,282

RAILWAY CONSTRUCTION COMPANIES.

	SANCTIONED ESTABLISHMENT.			ACTUAL STRENGTH.			
	British Officers.	Indian Other Ranks.	Followers.	British Officers.	Indian Other Ranks.	Followers.	
No. 126 Railway Construction Company	2	548	13	1	280	8	
TOTAL	...	2	548	13	1	280	8

'RETURN SHOWING THE ACTUAL STRENGTH OF THE ARMY AND ROYAL AIR FORCE IN INDIA INCLUDING PERSIAN GULF PORTS, THE E.P. FORCE, S. PERSIA AND S.E. PERSIA AND ADEN ON THE 1ST NOVEMBER 1922' [447v] (78/78)

72 ARMY HEADQUARTERS, COMMANDS, DISTRICTS AND BRIGADES, ETC.

Units.	SANCTIONED ESTABLISHMENT.					ACTUAL STRENGTH.				
	British Officers.	British Other Ranks.	I. Os. & I. O. Rs.	Civilians.	Followers.	British Officers.	British Other Ranks.	I. Os. & I. O. Rs.	Civilians.	Followers.
British officers of the General and Administrative Staffs of Army Headquarters, Commands, Districts, Brigades, etc.	480	...	...	...	...	478	...	...	...	...
Total	480	...	...	...	...	478	...	...	...	...
Clerical and Menial Establishments of Army Headquarters—										
Military Secretary's Branch	...	...	...	56	29	...	7	...	38	28
General Staff Branch	...	...	...	103	61	...	15	...	82	61
Adjutant General's Branch	...	...	...	151	87	...	32	...	140	111
Quartermaster General's Branch	...	...	...	419	175	...	50	...	345	167
Ordnance Branch	...	...	...	36	24	...	6	...	30	21
TOTAL	...	...	...	(a) 765	376	...	(a) 110	...	635	388

(a) Includes Departmental Officers, Warrant Officers and British Other Ranks.

C18FA-108-12-12-22-GCFS