

This PDF was generated on 15/08/2022 from online resources of  
the **Qatar Digital Library**

The online record can be viewed at:

[http://www.qdl.qa/en/archive/81055/vdc\\_100000000812.0x0002e1](http://www.qdl.qa/en/archive/81055/vdc_100000000812.0x0002e1)

It contains extra information, high resolution zoomable views and transcriptions.

### **‘Administration Report of Aden for the year ending 31 March 1934’**

<b>Holding Institution</b>	British Library: India Office Records and Private Papers
<b>Reference</b>	IOR/V/10/573
<b>Date(s)</b>	1935 (CE, Gregorian)
<b>Written in</b>	English in Latin
<b>Extent and Format</b>	1 volume (54 folios)
<b>Copyright for document</b>	<a href="#">Open Government Licence</a>



#### **About this record**

Annual administration report of the Aden Settlement, providing a summary record of the main events and developments in each department of the Administration of Aden during the financial year 1933-34. The report was printed at the Government of India Press, New Delhi, in 1935.

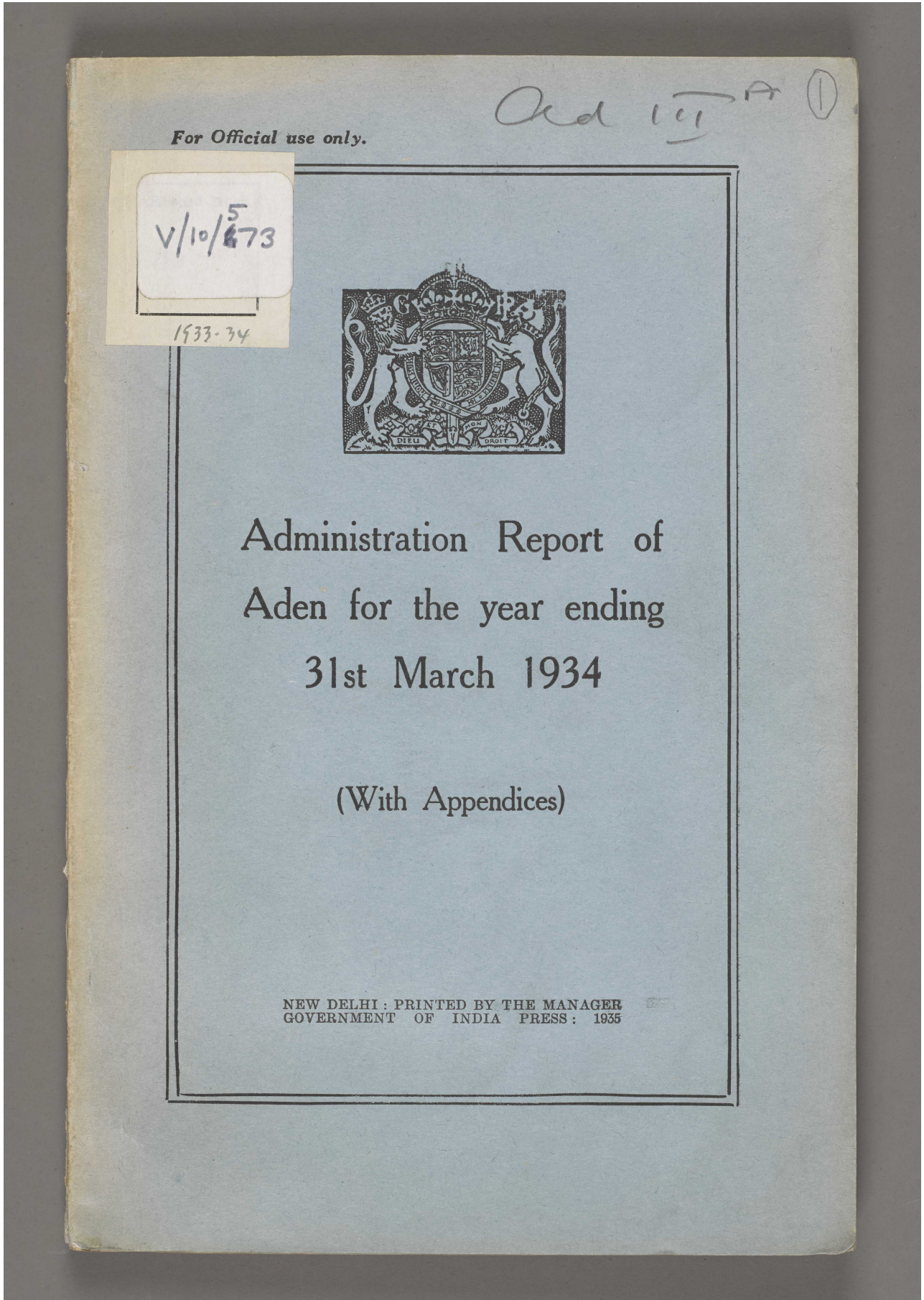
The report is divided into the following sections, some of which are further divided into sub-headings:

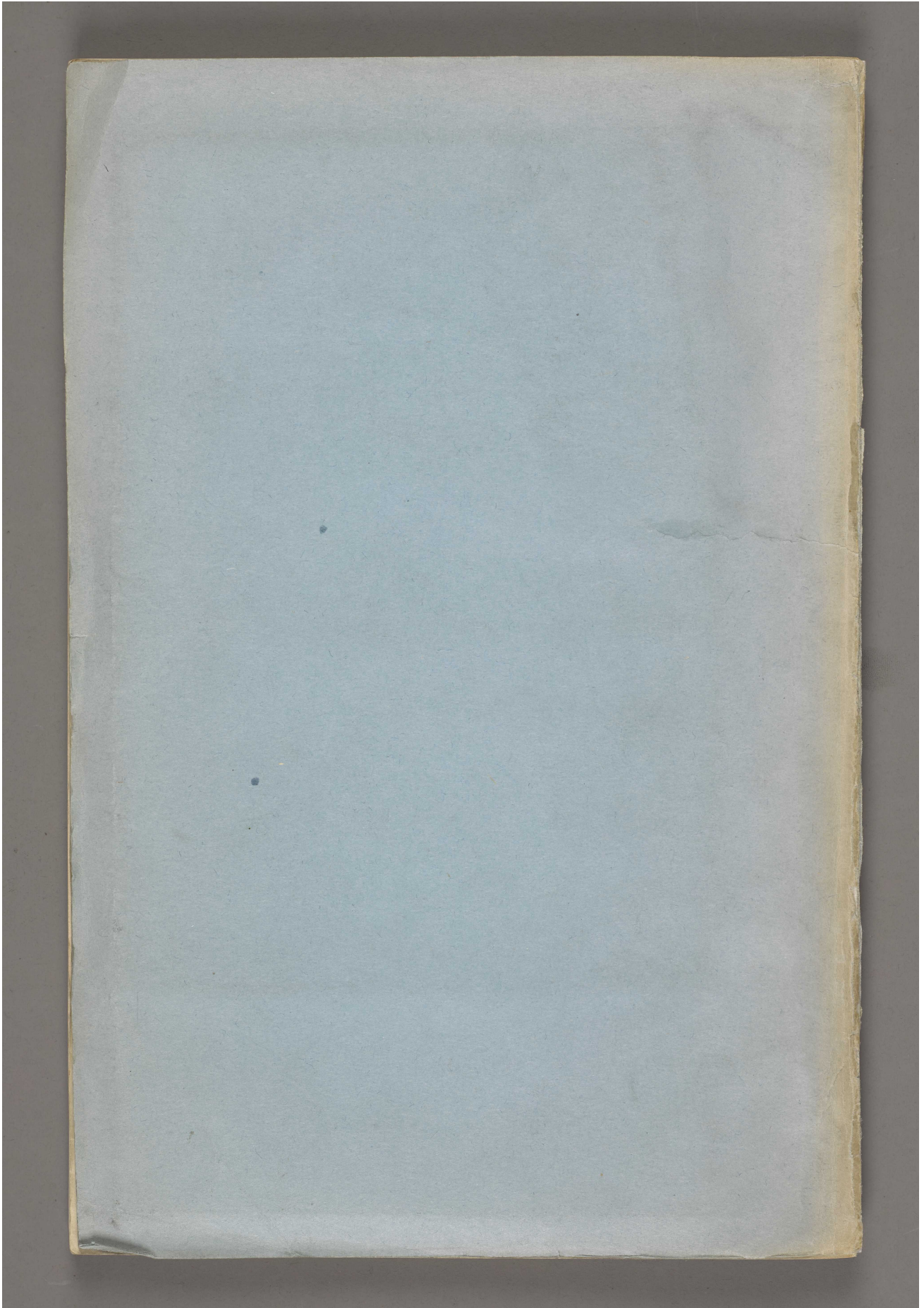
- ‘I. – General’ (ff 3-4), consisting of: Description; The Island of Perim; Historical Note
- ‘II. – Area and Population’ (f 4)
- ‘III. – Climate’ (f 4)
- ‘IV. – Administration’ (ff 4-5)
- ‘V. – Finance’ (f 5)
- ‘VI. – Judicial’ (f 5)
- ‘VII. – Police’ (f 5)

- 'VIII. – Prisons' (f 5)
- 'IX. – Medical' (ff 5-7), consisting of: European General Hospital; Civil Hospital; Infectious Diseases Hospital; The Keith Falconer Mission Hospital of the United Free Church of Scotland; Finance; Staff; Scope of Work; Settlement Work; Leper Asylum [hospital for persons affected by leprosy or Hansen's Disease]; Dispensaries; Vaccination
- 'X. – Public Health' (ff 7-8), consisting of: Births; Deaths; Infectious Diseases; Water Supply and Drainage
- 'XI. – Education' (ff 8-9)
- 'XII. – Public Works' (f 9)
- 'XIII. – Municipal' (f 9)
- 'XIV. – Port Administration' (f 9)
- 'XV. – Trade' (ff 9-10)
- 'XVI. – Shipping' (f 10)
- 'XVII. – Industries' (f 10), consisting of: Fish Meal Industry; Soap Manufacturing Industry 'XVIII. – Customs' (f 10)
- 'XIX. – Transport' (f 10)
- 'XX. – Post Office' (f 10)
- 'XXI. – Registration' (f 11)
- 'XXII. – Telephones' (f 11)
- 'XXIII. – Miscellaneous' (f 11), consisting of: Hotels; Regatta; Press Reuters.

A table of contents listing the sections of the report is on folio 2. The remainder of the volume (ff 13-54) consists of appendices to the report, which are listed on folio 12. Folio 55 consists of a map of Aden (IOR/V/10/573, f 55).

'Administration Report of Aden for the year ending 31 March 1934' [front]  
(1/106)





'Administration Report of Aden for the year ending 31 March 1934' [spine]  
(3/106)





'Administration Report of Aden for the year ending 31 March 1934' [head] (5/106)

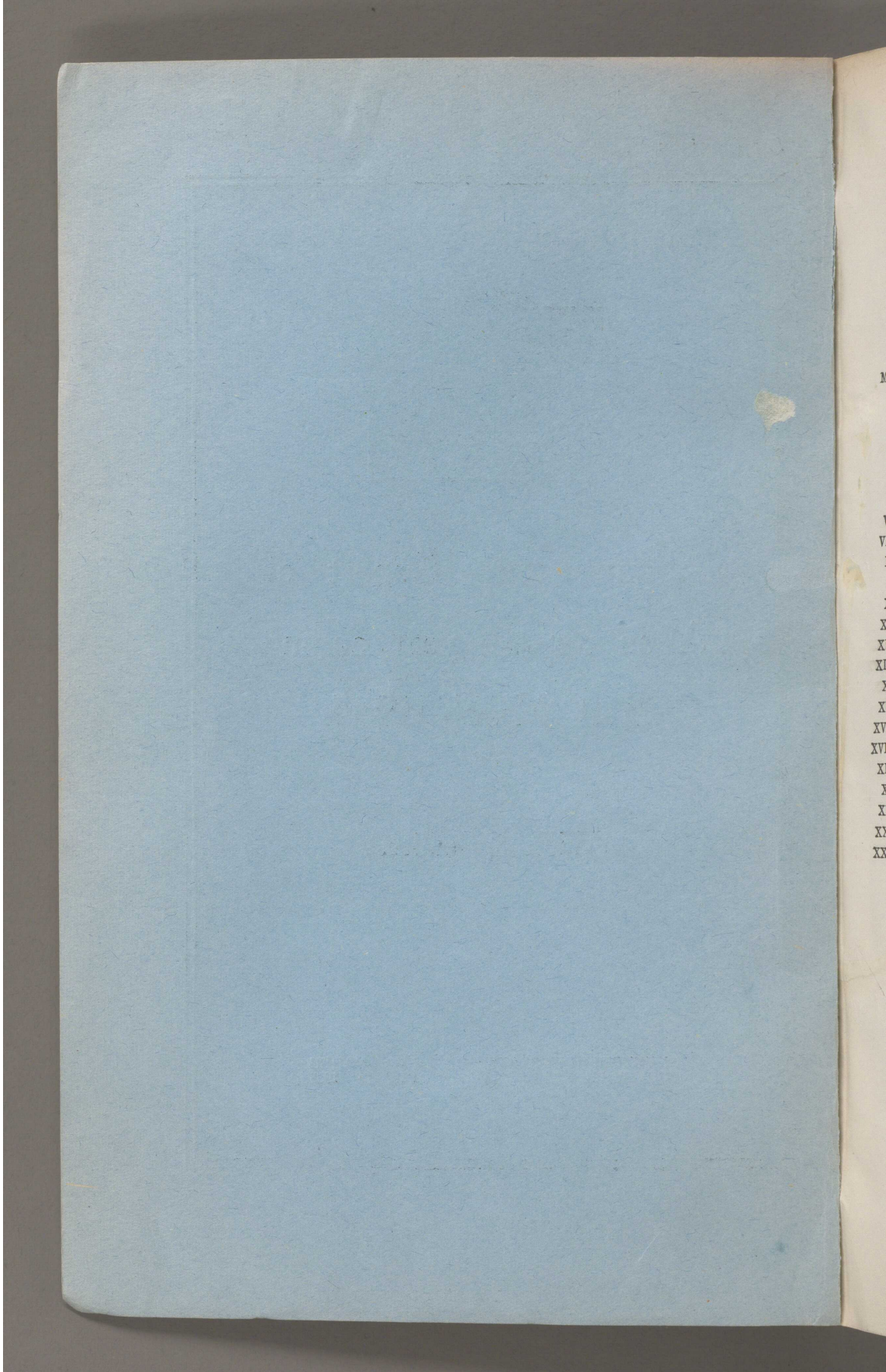


'Administration Report of Aden for the year ending 31 March 1934' [tail] (6/106)





'Administration Report of Aden for the year ending 31 March 1934' [front-i]  
(7/106)



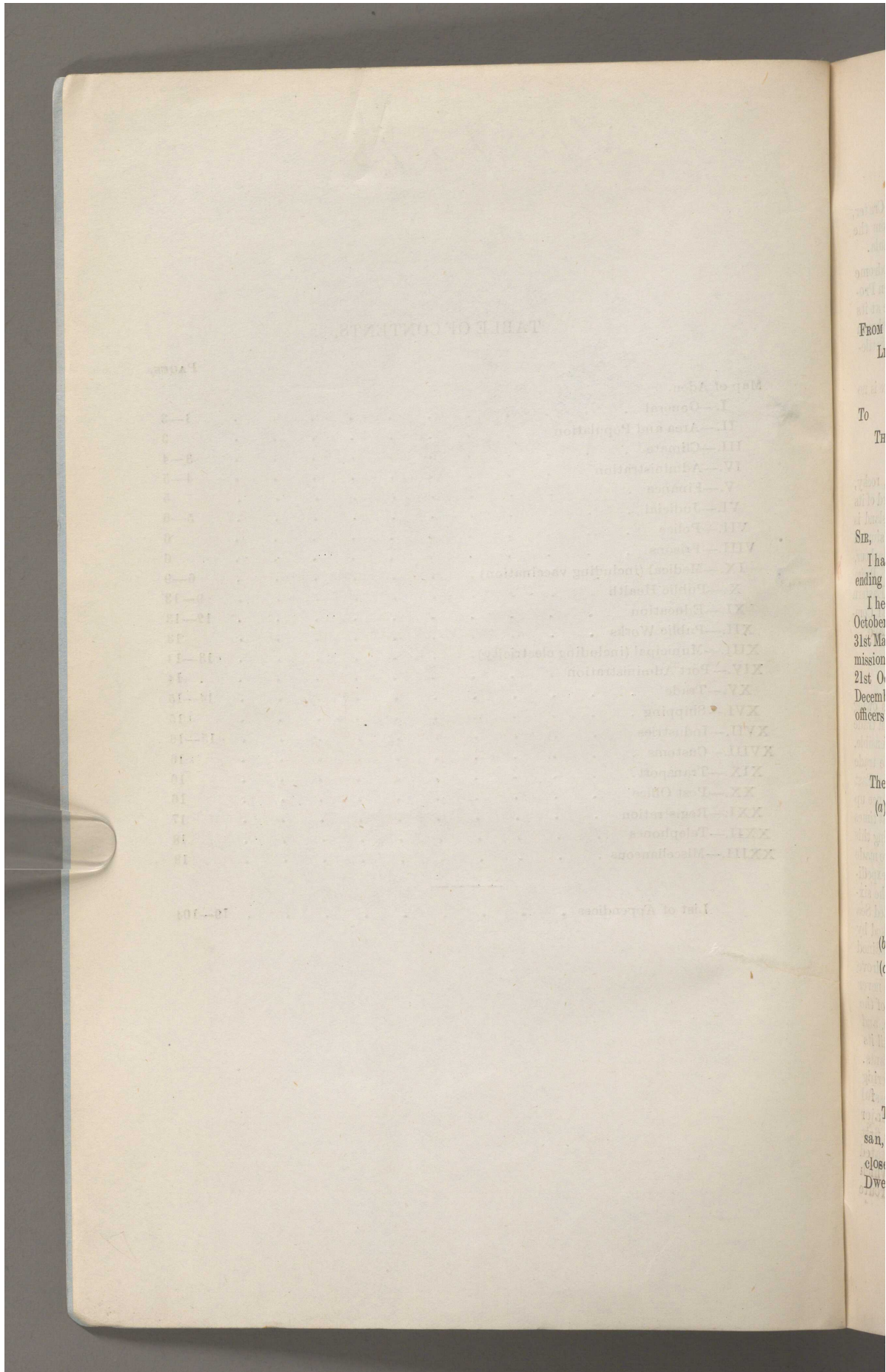
V/10/573

(2)

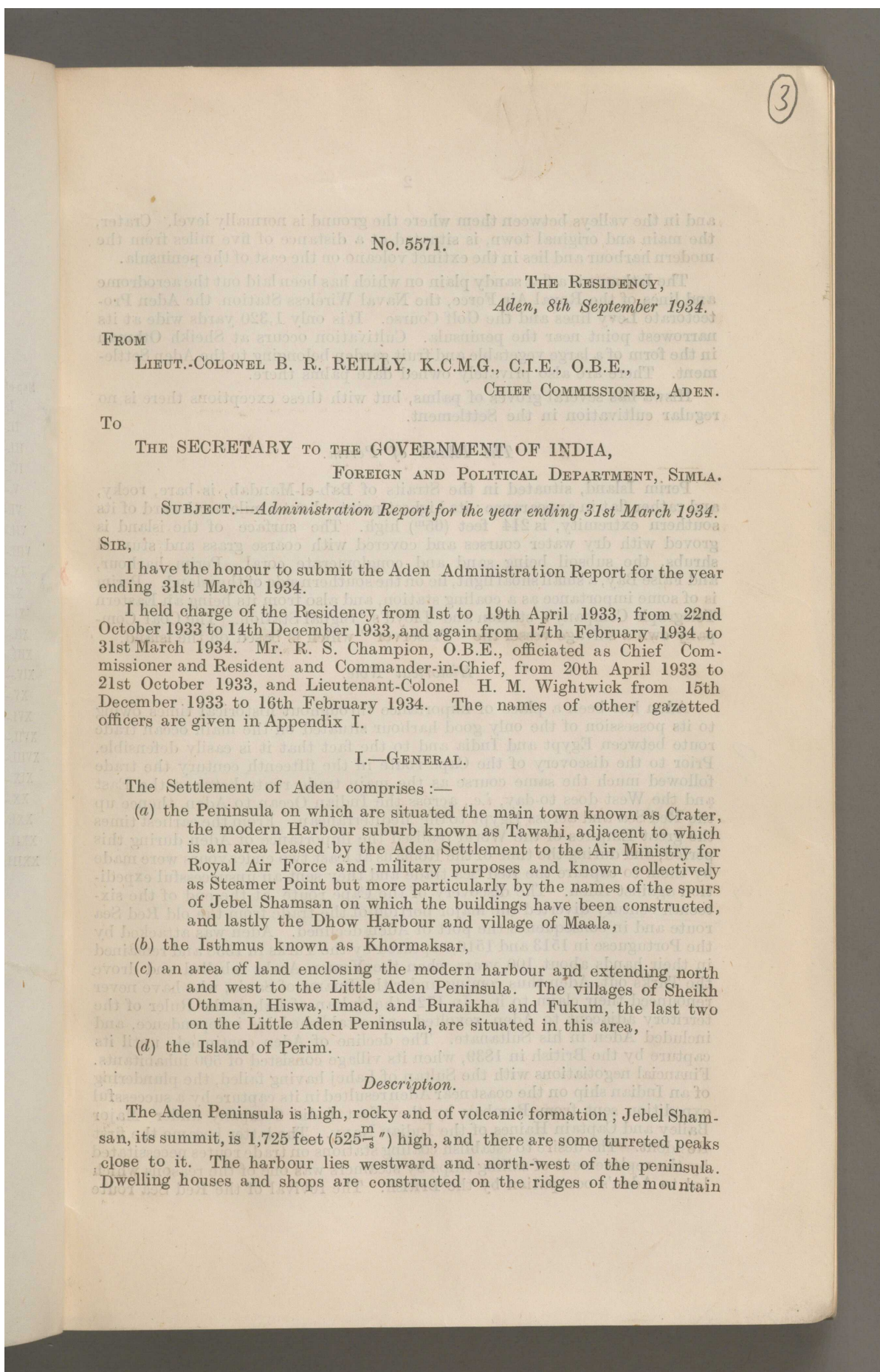
TABLE OF CONTENTS.

	PAGES.
Map of Aden.	
I.—General . . . . .	1—3
II.—Area and Population . . . . .	3
III.—Climate . . . . .	3—4
IV.—Administration . . . . .	4—5
V.—Finance . . . . .	5
VI.—Judicial . . . . .	5—6
VII.—Police . . . . .	6
VIII.—Prisons . . . . .	6
IX.—Medical (including vaccination) . . . . .	6—9
X.—Public Health . . . . .	9—13
XI.—Education . . . . .	12—13
XII.—Public Works . . . . .	13
XIII.—Municipal (including electricity) . . . . .	13—14
XIV.—Port Administration . . . . .	14
XV.—Trade . . . . .	14—15
XVI.—Shipping . . . . .	15
XVII.—Industries . . . . .	15—16
XVIII.—Customs . . . . .	16
XIX.—Transport . . . . .	16
XX.—Post Office . . . . .	16
XXI.—Registration . . . . .	17
XXII.—Telephones . . . . .	18
XXIII.—Miscellaneous . . . . .	18
-----	
List of Appendices . . . . .	19—104

'Administration Report of Aden for the year ending 31 March 1934' [2v] (9/106)



From  
L  
To  
Th  
Sir,  
I ha  
ending  
I he  
October  
31st Ma  
mission  
21st O  
Decem  
officers  
The  
(a)  
(b)  
(c)  
san,  
clos  
Dwe



and in the valleys between them where the ground is normally level. Crater, the main and original town, is situated at a distance of five miles from the modern harbour and lies in the extinct volcano on the east of the peninsula.

The Isthmus is a flat sandy plain on which has been laid out the aerodrome and lines of the Royal Air Force, the Naval Wireless Station, the Aden Protectorate Levy lines and the Golf Course. It is only 1,320 yards wide at its narrowest point near the peninsula. Cultivation occurs at Sheikh Othman in the form of a large vegetable and fruit garden belonging to the Aden Settlement. There are also privately owned date palms there.

Hiswa has several groves of palms, but with these exceptions there is no regular cultivation in the Settlement.

#### *The Island of Perim.*

Perim Island, situated in the Straits of Bab-el-Mandab, is bare, rocky, and rather flat in appearance; its highest point, about a mile northward of its southern extremity, is 214 feet (65<sup>m</sup>) high. The surface of the island is groved with dry water courses and covered with coarse grass and stunted shrubs, the subsoil being sand and conglomerate coral. Perim harbour, and False Bay, a small shoal light, lie on the southern side of the island. Perim is of some importance as a coaling station, and also from its being an Eastern Telegraph Company's station and Lloyd's Signal Station. The Coal Company own a salvage vessel the "Preserver" which is based on the island.

#### *Historical Note.*

Aden has been a place of importance throughout historical times owing to its possession of the only good harbour situated on the main ocean trade route between Egypt and India and to the fact that it is easily defensible. Prior to the discovery of the Cape route in the fifteenth century the trade followed much the same course as the main trade route between the East and the West does to-day, *i.e.*, across the Indian Ocean to Aden, thence up the Red Sea and across Egypt to the Mediterranean. From the earliest times the great Empires of the World realised the importance of Aden during this period, and during the time of the Romans at least two endeavours were made by them to capture the Red Sea trade and they sent an unsuccessful expedition against Aden. The discovery of the Cape route at the end of the sixteenth century diverted the major portion of the trade from the old Red Sea route and in consequence the port of Aden declined. Aden was attacked by the Portuguese in 1513 and 1516, captured by the Turks in 1538 and remained in their hands about 100 years when the Yemen Arabs rebelled and drove the Turks out, Aden thus coming under the Imams of San'a, who have never renounced their claim to it. In 1728 the Sultan of Lahej, the Ruler of the territory adjacent to Aden, revolted and established his independence, and included Aden in his Sultanate. The decline of Aden continued until its capture by the British in 1839, when its village consisted of 500 inhabitants. Financial negotiations with the Sultan of Lahej having failed, the plundering of an Indian ship on the coast near Aden resulted in its capture by a successful expedition sent from Bombay by the East India Company under Major Bailey and Captain Haines of the Indian Navy. The latter became the first Resident. The desire to establish coaling stations on trade routes necessitated by the replacement of sailing ships by steamers was one of the reasons which led to Aden's occupation by the British. The revival of the Red Sea route

4

and the opening of the Suez Canal in 1869 regained for Aden its old importance. As a result of the increased prosperity of Aden since British occupation the population has risen from 500 to 46,000. The modern commercial prosperity of Aden is based on the fact that it is a fuelling Station, originally for Coal, and now for Coal and Oil. It is nearer than any other large port on the main eastern trade route to the Anglo-Persian Oil Company's production centre in the Persian Gulf. The fact that ships call at Aden for fuelling has caused general increase in trade and it is the distributing centre for trade to and from Arabia, Abyssinia, Somaliland and Africa. During the past five years Aden has suffered like the rest of the world from severe trade depression but is sharing in the general revival taking place at the present time.

II.—AREA AND POPULATION.

The total area of the Settlement of Aden is 75 square miles, and its population at the time of the census taken in 1931 was as follows :—

Crater . . . . .	21,383
Maala including Barrier Gate . . . . .	3,665
Tawahi and Steamer Point including Hedjuff . . . . .	7,502
Sheikh Othman, Imad Hiswa and Little Aden . . . . .	12,167
Military area (Steamer Point including Khormaksar) . . . . .	1,981
	Total . . . . .
	46,638

The racial composition of this population is as under :—

European . . . . .	1,145
Arabs . . . . .	29,820
Indians . . . . .	7,287
Jews . . . . .	4,120
Somalis . . . . .	3,935
Miscellaneous . . . . .	331
	Total . . . . .
	46,638

The Island of Perim at the south end of the Red Sea, with an area of 5 square miles and a population of 1,700, is administratively attached to Aden.

III.—CLIMATE.

There is a third class Meteorological Observatory in Aden under the superintendence of the Medical Officer in charge of the European General Hospital. The maximum temperature recorded was 101.9 in July 1933, and the minimum was 66.2 in February 1934. The rainfall totalled 1 inch 57 cents. Hot sandy winds prevailed as usual during the south-west monsoon. There are no crops in Aden, which depends on supplies from other countries, principally India and the interior.

The climate of Aden from October to April, *i.e.*, during the North-West monsoon is cool and pleasant especially from November to February. During

the South-West monsoon, *i.e.*, from June to September a hot sandy wind, known as the Shimal, prevails on the peninsula, but on its western side the breezes are from seaward and fairly cool. May, a part of June and September are generally hot, damp and airless. Sandstorms occur in the months of May, July and August. These come from a northerly direction usually a short time before sunset and blow very strongly at times up to 10 P.M. the air being so thick with sand that it is only possible to see a short distance, and the temperature falls. During the month of August dense mists occur at times and it is not possible to see across the harbour.

Meteorological records are maintained at the European General Hospital and the data are published in the *Aden Gazette* fortnightly for the information of the public.

#### IV.—ADMINISTRATION.

On the 1st April 1932 the Settlement of Aden was transferred from the control of the Government of Bombay and was formed into a Chief Commissionership under the immediate authority and management of the Governor-General of India in Council. The Chief Executive Officer is styled Chief Commissioner, Resident and Commander-in-Chief.

He is responsible to the Government of India for the administration of the Province of Aden, and to the Colonial Office for the control of the Aden Protectorate, and his appointment is made alternately by His Majesty's Government and the Government of India. He is assisted in Protectorate affairs by a Political Secretary and one or more Political Officers, who are appointed by the Colonial Office, and in those of Aden proper by a Civil Secretary, who is an officer of the Foreign and Political Department of the Government of India, a Personal Assistant from the same Department or a military Aide-de-Camp, and an Extra Assistant Commissioner. The Civil Secretary is also District Magistrate. Judicial work is performed by a District and Sessions Judge who is a member of the Indian Civil Service. The police are under the control of an officer of the Indian Police Service. The administration of the Port and of Municipal affairs is described in Sections XIII and XIV.

The Island of Perim is administered by the Agent of the Perim Coal Company at Perim, who is styled Government Agent, Perim and is under the control of the Chief Commissioner at Aden.

The Island of Kamaran, situated near the Arabian Coast about 200 miles north of Perim, and formerly a Turkish possession, has been in British occupation since 1915. It is administered by the Government of India through a Civil Administrator who is under the control of the Chief Commissioner at Aden. The Island has an area of 22 square miles and a population of about 2,200. It contains a Quarantine Station for pilgrims on their way to Mecca from the East. About 15,000 pilgrims pass annually through the Station, which, under an Anglo-Dutch Agreement signed in 1926, is managed jointly by the Government of India and the Government of the Netherlands East Indies.

The lighthouses in the Red Sea on the Islands of Abu Ail and Jebel Tier are managed by the Board of Trade and are in charge of the Superintendent, Lighthouses, Aden, subject to the control of the Chief Commissioner. A third lighthouse, at Centre Peak, was closed on the 1st October 1932, and has since been re-established under Italian Control.

(5)

The Aden Protectorate, which comprises the Hadhramaut, covers <sup>of au</sup> an area of about 42,000 square miles and includes the territories of a number <sup>of</sup> of Chiefs and tribes in treaty relations with His Majesty's Government. The Resident and Commander-in-Chief deals with Protectorate matters under the direct control of His Majesty's Secretary of State for the Colonies.

The Aden Protectorate borders on the Arab State of the Yemen, with which there have been frequent frontier difficulties for several years. These were adjusted by a treaty signed at San'a (the Capital of the Yemen) between His Majesty's Government and the King of the Yemen, on 11th February 1934, by the terms of which the *status quo* on the date of signature is to be preserved for the duration of the treaty, a period of 40 years. Prior to signature the King of the Yemen by mutual agreement, evacuated certain parts of the Protectorate which were in his occupation.

#### V.—FINANCE.

The Government of India maintain a Treasury at the Crater.

The total revenue from all sources amounted to Rs. 10,73,625 and the expenditure to Rs. 11,28,977 (excluding the Posts and Telegraphs Department, the accounts for which are maintained separately by the Director General of Posts and Telegraphs, India). The chief sources of revenue are Income-tax, Salt duty, Excise, Stamps and Lighthouse dues. Details are shown in Appendices V to VIII-A.

There is a sub-treasury at Kamaran. There are branches of the National Bank of India at the Crater and Steamer Point. The firm of Messrs. Cowasjee Dinshaw and Brothers maintain a private banking business for the convenience of local merchants and others.

#### VI.—JUDICIAL.

During the year the system of Judicial administration in Aden has been changed by Regulation VI of 1933 which repeals Bombay Act II of 1864 and later amending Acts.

The Chief Commissioner no longer has judicial powers and the Court of the Resident is replaced by the Court of the District and Sessions Judge. The District and Sessions Judge who is an officer of the Indian Civil Service is appointed by the Government of India, and exercises original and appellate powers in Civil and Criminal Cases analogous to those exercised by a District and Sessions Judge in India, and has also extensive revisional powers.

The right of demanding a reference to the Bombay High Court in any suit of which the subject matter exceeded Rs. 1,000 has been abused extensively by dishonest litigants and has been abolished. A right of appeal from the District Court to the High Court has been provided when the subject matter exceeds Rs. 5,000.

Certain minor changes also have been made.

The Registrar, District Court, is a First Class Magistrate and tries original Civil suits up to a valuation which at present is fixed at Rs. 1,000. He is also invested with the powers of a Judge of Small Causes up to the value of Rs. 500.

There are Magisterial Courts at Crater, Steamer Point and Sheikh Othman. The Government Agent, Perim, is a Second Class Magistrate and is also invested with the powers of a Judge of Small Causes up to the value of Rs. 500.



Appeals and revision of applications from these Courts lie to the District and Sessions Judge.

For detailed statistics see Appendices IX to XV.

#### VII.—POLICE.

The Aden Police under the control of a Commandant of Police and an Assistant Commandant of Police consists of two Forces—an Unarmed and an Armed Force. The strength of the former is 9 Inspectors and 315 men, including small detachments of Camel Police and Perim Harbour Police. (The Perim Harbour Police came under the control of the Commandant of Police with effect from 1st March 1933). The strength of the latter is 4 Inspectors and 200 men.

Detachments of Armed Police have been maintained on the Islands of Perim and Kamaran.

The total expenditure on the Aden Police Force amounted to Rs. 3,35,742. The Settlement contribution and other expenditure towards the Sheikh Othman and the Aden Police Forces amounted to Rs. 41,754 and the Port Trust paid a moiety of Rs. 24,142 towards the cost of the Aden Harbour Police Force.

Details of the strength of the Aden Police Force are given in Appendices XVI to XVIII.

#### VIII.—PRISON.

There is a Central Jail situated at Crater of which the Civil Surgeon is the Superintendent. Detailed information will be found in Appendix XIX.

28 prisoners were released under remission rules.

Four meetings of the quarterly Committee were held during the year.

Official and Non-official visitors appointed under the Prison Rules inspect the Jail once a week in rotation and hold a combined inspection once a quarter.

No meeting of the Advisory Committee was held during the year to review the sentences of long term prisoners, as there were no prisoners whose sentences were due to be reviewed.

Mat making, cane chair work, re-stringing racquets and netting tennis and cricket nets are some of the industries carried on in the criminal Jail.

#### IX.—MEDICAL.

**European General Hospital.**—Lieutenant-Colonel E. S. Phipson, D.S.O., M.D., M.R.C.P., I.M.S., held medical charge of the hospital from 1st April 1933 to 31st March 1934.

The medical staff consists in addition to the Medical Officer in charge of a Resident Medical Officer, a Military Assistant Surgeon (Mr. E. A. Eates, I.M.D.) from 1st April 1933 to 31st March 1934, and three Subordinate Medical Service Officers of the Bombay Civil Medical Department. Owing to heavy work at the Civil Hospital, Crater, one of the S. M. S. Officers was transferred in August 1933.

The cost of the establishment and maintenance of the hospital is defrayed by Government and amounted to Rs. 32,197-15-0 exclusive of pay of the medical officer and the cost of the nursing, which latter is borne by the Prince of Wales's Aden Nursing Association, with the assistance of the Government.

The Nursing staff consists of a matron (Miss J. Coulter, S. R. N.) and three nursing sisters, all fully trained in the United Kingdom and all possessing midwifery qualifications as well as their general nursing diploma. The income derived from hospital fees recovered from patients and credited to Government and the Aden Settlement was Rs. 9,981-9-0 and Rs. 10 respectively during the year.

The patients of the hospital were mainly seamen, British and foreign.

2,476 out-door and 116 in-door patients were treated at this hospital during the year.

During the last two years the number of in-patients has shown a progressive diminution largely due no doubt to the prevailing financial depression and the necessity of strict economy on the part of the shipping.

There were 183 in-patients in 1931-32, 140 in 1932-33 and 116 in the year under report.

The average daily number of in-door patients was 5·7 and out-door 26·7 compared with 4·8 and 18·8 respectively in the previous year.

The new infectious Diseases Block at Hedjuff which was erected in 1927 at the joint cost of the Government, Aden Settlement and Aden Port Trust, as an annexe to this hospital, was not utilised during the year under report. When the annexe is opened one of the Sisters from the European General Hospital is detailed for duty there for as long as may be necessary. This means that the staff of the European General Hospital is depleted and the matron then does a sister's duty in the hospital in addition to her own.

The cost of the establishment and maintenance of the annexe is, in the first instance, defrayed by the Aden Settlement and eventually shared between the Government, Aden Settlement and Aden Port Trust.

**Civil Hospital.**—The superior establishment of the Civil Hospital, Aden, consists of the following :—

- 1 Civil Surgeon ; 1 Lady Doctor.
- 1 Sister-in-Charge ; 1 Nurse-midwife, and
- 1 Probationary Nurse.

The following additions and alterations to the Hospital buildings were made during the year :—

- (1) Maternity Ward.
- (2) Tuberculosis Ward.
- (3) Four additional cells in Mental Hospital.
- (4) Mackawi Arab Ward, built by Khan Bahadur M. A. K. Mackawi, O.B.E., at his own expense consisting of five units.

The total number of patients treated during the year was 13,351 ; of this number 1,388 were treated as in-door and 11,963 as out-door patients.

Amongst the in-door patients there were 590 British (Settlement) subjects, 364 British Protectorate subjects and 434 Aliens as compared with 794 British (Settlement) subjects, 211 British Protectorate subjects and 421 Aliens during the year 1932-33.

The number of operations performed during the year was 944.

**Infectious Diseases Hospital.**—It is situated in an isolated position on the Maala plain, and is maintained by the Aden Settlement. Formerly this hospital was in charge of the Port Health Officer, Aden. The Hospital has been in charge of the Civil Surgeon, Crater, since June 1927 when the Port Health Officer took charge of the new Infectious Diseases Block, Hedjuff, *vide* Government Resolution, General Department, No. 2905, dated the 6th March 1925. The Hospital since 1930 has been in charge of the Medical Officer of Health, Aden Settlement. One case of small-pox and 4 cases of chicken-pox were admitted to the Aden Settlement Infectious Diseases Hospital from the shipping.

**The Keith Falconer Mission Hospital of the United Free Church of Scotland.** Sheikh Othman, is in charge of Dr. P. W. R. Petrie, M.B., B.Ch., assisted by Dr. R. Napier, M.B., Ch.B.

**Finance.**—Despite the adverse economic conditions in Britain, there was no reduction in the financial grant made by the Church of Scotland to this, or indeed to any other hospital and therefore, although the small proportion of income arising from local donations was not kept up, no curtailing of the work was necessary. The total expenditure on the hospital including leper work, was in 1933, Rs. 23,529 of which Rs. 7,500 was derived from various Government and Settlement grants. The bulk of the income comes, of course, from Home, as also the Europeans', salaries *not* included in the above total.

**Staff.**—The European staff continues to be two medical practitioners and two trained sisters, and the systematic training of Arab staff to specialise in the necessary work of anaesthetising, dispensing, preparing pathological specimens and performing all branches of nursing work is carried on as before.

**Scope of Work.**—In the main hospital where no patient is ever turned away if treatment is necessary, there has been an unusually heavy winter partly due to cases of malignant malaria from the interior. As usual gastro-intestinal ailments, pneumonia, tuberculosis and sibilant rales formed the bulk of the medical cases receiving in-patient treatment, and on the surgical side over 500 major surgical operations had to be performed. In the Out-patient department some 4,000 new patients were seen in the course of the year. There are 55 beds.

**Settlement Work.**—The treatment for venereal disease in Sheikh Othman and neighbouring area continues to be given by the hospital.

**Leper Asylum.**—The Leper Asylum at Sheikh Othman, previously maintained by Government, was transferred to new and more commodious quarters in 1932, and was placed under the management of the Ion Keith Falconer Mission at Sheikh Othman to which Government and the Aden Settlement make an annual grant of Rs. 4,500 for this purpose.

Owing to funds placed at the disposal of the hospital from Home it is hoped to complete a small female ward and obviate the necessity of having male and female patients in one building. Twenty-five lepers are constantly undergoing in-patient treatment and are being trained in gardening and other work, the ultimate ideal being as in other leper hospitals—a self-supporting colony.

A financial statement (Appendix XX) is appended.

**Dispensaries.**—There are two private charitable dispensaries, one at the Crater and one at Tawahi. Dispensaries are maintained by the Settlement at Maala and Sheikh Othman.

A dis  
Protecto  
useful w  
Vacc  
ed in th  
figures o  
The  
reduced  
been a c  
Aden an  
Gate.

The  
1 ca  
1,61  
1,26

21 s

7 s

Birt  
was 1,5  
mean f  
The  
in the

App  
years  
347 ag

Ap  
trienn  
1932:

D  
The  
still  
the c  
of 1,  
T  
year

(7)

A dispensary opened on the 16th February 1932 at Lahej in the Aden Protectorate and maintained by His Highness the Sultan continues to do very useful work. The details are shown in Appendices XXI and XXI-A.

**Vaccination.**—Appendix XXII gives the details of vaccinations performed in the Aden Settlement during the year 1933-34 as compared with the figures of the previous two years.

The reduction in the number of primary vaccinations is chiefly due to reduced number of such vaccinations performed at Barrier Gate. There has been a diminution in the number of Kafila people bringing merchandise to Aden and hence the fall in the primary vaccinations performed at Barrier Gate.

#### X.—PUBLIC HEALTH.

The Public Health of Aden was good throughout the year.

1 case of small pox and 4 chicken-pox were admitted to the Aden Settlement Infectious Diseases Hospital, Maala, from the Shipping.

1,614 steamers and rigged vessels were granted Bills of Health during the year against 1,520 in the previous year.

1,267 Bills of Health were issued to bugalows against 672 in the previous year.

21 ships arrived in the Port during the year with infectious diseases on board. In the case of these vessels necessary sanitary precautions were taken to check the spread of the disease and the Bills of Health were annotated according to the circumstances of each case.

7 ships carrying 2,991 pilgrims passed through the Port of Aden during the year ending 31st March 1934. All were medically examined, but they were not granted pratique.

**Births.**—The total number of births registered during the year 1933-34 was 1,551, as compared with 1,621 in 1932-33, 1,386 in 1930-31 and 867 the mean for decennium (1923-24 to 1932-33).

The birth ratio per 1,000 of the population was 33·72 as against 35·24 in the year 1932-33, 30·13 in 1931-32 and 22·18 the decennial mean.

Appendix XXIII shows the number of births and deaths during the ten years previous to 1932-33. The excess of births over deaths in 1933-34 was 347 against 467 during the previous year.

Appendix XXIV shows the monthly record of births, deaths and also the triennial average for the three non-epidemic years of 1930-31, 1931-32 and 1932-33.

**Deaths.**—The mortality in 1933-34 was higher than in the previous year. The total number of deaths registered was 1,204 including premature and still births, as compared with 1,154 in 1932-33, 1,284 in 1931-32 and 1,492 the decennial mean. There were 69 deaths less than the triennial average of 1,273 for the three non-epidemic years 1930-31, 1931-32 and 1932-33.

The death ratio per 1,000 living was 26·17 as against 24·22 for the previous year and 33·91 the mean death rate for the decennium.

The monthly mortality figures show that the mortality was above the triennial mean in the months of November and December 1933, and January and March 1934. There was increased mortality from Respiratory Diseases, Diarrhoea and death from Child Birth.

Appendix XXV gives a comparative statement of mortality during the last three years.

*Infectious Diseases.*

**Small-Pox.**—During the year 1933-34, two cases of small-pox were notified by the Port Health Officer. They were both imported cases. Out of these cases one patient died in European General Infectious Diseases Block at Hedjuff.

**Chicken-Pox.**—There was an epidemic of Chicken-Pox in the year under review. From April to December 1933 8 cases of Chicken-Pox were treated at the Infectious Diseases Hospital at Maala. Some of these were imported cases. The actual epidemic started in the month of January 1934. The first few cases were amongst the Somali followers working in the Royal Air Force at Steamer Point. The contacts of these cases, seeing that the patients were being segregated at the Infectious Diseases Hospital, came down to stay with other Somalis in the Post Office Bay, Tawahi and Crater areas and thus the infection was spread to other Civilian Communities. By the end of April 1934 the epidemic died out. 101 cases were treated at the Infectious Diseases Hospital at Maala and Sheikh Othman, and 15 cases were suitably isolated in their own houses. The measures taken to combat the spread of the disease were (1) compulsory notification, (2) isolation of the diseased with the contacts at the Infectious Diseases Hospital wherever possible, (3) disinfection of the houses and (4) steam disinfection of clothing of the sufferers and the contacts at the Disinfection Station at Maala. No other infectious diseases were notified during the year under review.

**Dysentery.**—The number of deaths from Dysentery was 20 as against 29 during the year 1932-33 and 31 during the year 1931-32.

**Diarrhoea.**—The mortality from Diarrhoea showed an increase over the last year's figure.

The number of deaths from Diarrhoea was 180 as against 136 during the year 1932-33 and 149 in 1931-32.

**Respiratory Diseases.**—As usual the number of deaths from diseases of the respiratory system was the highest in the year under review. They accounted for 448 deaths as compared with 399 during the previous year and 398 in the year 1931-32. The worst months of the year were November 1933 to March 1934. The mortality from these diseases was the highest in the month of January 1934 when 60 deaths occurred. Appendix XXVI shows the monthly mortality from the Respiratory Diseases during the years 1932-33 and 1933-34.

**Malaria.**—866 cases and 10 deaths were reported during the year as against 1,137 cases and 16 deaths in 1932-33 and 1,986 cases and 24 deaths in 1931-32.

In June 1933 the method of reporting cases of malaria was improved upon by the introduction of a new form of "Fortnightly return of cases of Malaria" treated at various institutions. Prior to this, cases of malaria treated by the various doctors were not classified as "Local" and "Imported." Thus in

April  
tution  
of the  
of Lo  
in the  
Du  
post r  
the hi  
cannot  
2 deat  
at the  
10 cas  
shown  
On  
be app  
T  
sanita  
Vi

(a)  
W  
tanks  
100,00  
which  
which  
and e  
compl  
will s  
by tw  
to a C  
gallon  
plet  
is on  
fire h  
F  
stati  
erect  
43,00  
has l  
being  
galle  
buti  
plet  
wat  
dian  
150  
are

8

11

April and May 1933, 166 cases were reported by the various medical institutions in the Fortresses. But from the records now maintained the fallacy of these returns is easily recognisable. Appendix XXVII shows the number of Local and Imported cases of malaria treated at the various institutions in the Aden Settlement during the year.

During the year under review some medical practitioners had given a post mortem diagnosis of malaria as the cause of death in 8 cases simply from the history given by the relatives of the deceased and as such this information cannot be taken as a reliable one, for statistical purposes. The remaining 2 deaths occurred amongst the imported cases of malaria which were treated at the Civil Hospital during the year. These ten deaths were not among the 10 cases which are mentioned as clinically diagnosed local cases of malaria shown in Appendix XXVII.

On the whole the public health of Aden continues to be improving as will be appreciated by reference to Appendices XXIII and XXIV.

The drainage at Tawahi and Crater has done a lot in improving the general sanitation and health of the public.

Vital statistics will be found in Appendix XXVIII.

#### *Water Supply and Drainage.*

(a) **Water Supply.**—The present position is as follows:—

Water from four of the bore wells in Sheikh Othman is pumped to two tanks in the Settlement gardens. Each of these tanks has a capacity of 100,000 gallons and each is independently connected to the 15" main through which the water is fed by gravity to the reservoir at Isthmus. This reservoir which had been empty for a number of years was found to be leaking badly and extensive repairs have had to be carried out. These repairs are not yet completed. There is a filling station at Isthmus for water carts, but this will shortly be discontinued. Water from the Isthmus reservoir is pumped by two centrifugal pumps each capable of delivering 10,000 gallons per hour to a Crater Service Reservoir consisting of two steel plate tanks each of 67,000 gallons capacity. The Crater distribution system has been practically completed and 250 houses have been connected to the mains. In addition there is one filling station for public carts and one for Settlement lorries, and 51 fire hydrants have been fitted in the mains for the protection of the town.

For the supply of water to Tawahi a 9" main has been laid for the pumping station at Isthmus to Johar Ridge where two steel plate tanks are being erected. Of these one will have a capacity of 97,000 gallons and the other 43,000 gallons. An additional pump of 20,000 gallons per hour capacity has been ordered for this supply. From Johar Ridge a 9" diameter main is being laid to Tawahi where it will supply two steel plate tanks each of 50,000 gallons capacity. These tanks will form the Service Reservoir for the distribution mains in Tawahi, and for a supply to Post Office Bay.

(b) **Drainage.**—The Crater Drainage System has been practically completed, details being as follows:—

All 9" and 12" diameter sewers, the 15" diameter outfall, and the storm water drain have been completed and are in use. 27,418 feet of 6 inches diameter sewer, 7,784 feet of surface drain, 2,145 feet of branch surface drain, 150 manholes, 81 catchpits and 24 ventilating shafts have been completed and are practically all in use.

A small drainage scheme for the Post Office Bay area has been proposed for Rs. 8,000 and will shortly be taken in hand.

The expenditure during the year has been as follows :—

	Rs.
Crater Water Supply . . . . .	87,187
Tawahi Water Supply . . . . .	84,544
Repairs to Isthmus Reservoir . . . . .	5,393
Fire fighting services . . . . .	2,445
Crater Drainage . . . . .	76,460
	2,56,029

The total expenditure since the beginning of these works, *i.e.*, 1929-30, has been :—

	Rs.
Water Supply . . . . .	5,96,023
Drainage, Crater . . . . .	1,24,924
	7,20,947

which have been met out of the loan of Rs. 4 lakhs taken from Government, the advance of Rs. 3 lakhs from General Fund of the Aden Settlement and the sale proceeds of water instead of drawing the full loan of Rs. 8 lakhs sanctioned by Government for these schemes. It is proposed to repay the Government loan of Rs. 4 lakhs by taking a loan of Rs. 3 lakhs from the Aden Port Trust at a reduced rate of interest and by payment of Rs. 1 lakh out of the General Fund of the Aden Settlement.

#### XI.—EDUCATION.

The Aden Schools were under the supervision of an Indian Deputy Educational Inspector, during the year under report. An Assistant Education Officer from Palestine was appointed from 9th October 1933.

**Indigenous Schools**—There were 10 schools (5 for boys and 4 for girls and 1 mixed) with 312 pupils. Teaching is of a primitive nature. They serve as feeders to all Primary schools.

**Primary Schools.**—There were four Government Arabic Primary Schools as compared with three of last year with 382 pupils. The fourth was opened from May 1933, at Maala. Besides these, there were 6 Government aided schools (3 for boys and 3 for girls) with 397 boys and 249 girls and one recognised Mission school at Sheikh Othman with 26 pupils. One new aided Girls' school was started by Anjuman-i-Islam, Tawahi, during the year under report.

There were 130 boys for the Joint Board Examination for admission to Anglo-Vernacular School in November 1933. Of these 38 were of Urdu Schools at Crater and Tawahi. Eight students (7 Arabs and 1 Indian) were declared successful.

Sec  
includi  
Govern  
year u  
(b)  
with I  
are un  
instru  
  
One G  
the ot  
caters  
later  
The m  
short  
  
Re  
B.A.,  
diplom  
the S  
Mr. M  
Exam  
July  
  
Ju  
Class  
merc  
T  
1934  
S  
  
the  
App  
  
ma  
Bel  
Rs.  
at  
  
Com  
miss  
tion  
  
I  
mar  
men  
thes

9

**Secondary Schools.**—(a) There were three Anglo-Vernacular Schools including the Government School with a total number of 181 pupils. The Government School obtained the services of five graduate teachers during the year under report.

(b) **English Teaching Schools.**—There were in all two schools for boys with 123 pupils and three for girls with 125 pupils. All these schools are under the management of the Roman Catholic Mission. The medium of instruction is English in all three stages Primary, Middle and High.

**Commercial Education.**—There were two Commercial Schools. One Government Night Class attached to the Anglo-Vernacular School, while the other was the unrecognised Aden Commercial Institution. The former caters for the Government of Bombay Commercial Examination, while the latter caters for the London Chamber of Commerce Junior Examination. The number of students of the Government Anglo-Vernacular School learning short hand was 2, typewriting 14, and other commercial subjects was 4.

**Results of the Public Examinations during 1933-34.**—Mr. J. J. Upadhyya, B.A., completed his Secondary Teacher's Examination and secured a diploma of S. T. C. in March 1933. Mr. Rajamaner also completed the S. T. C. Examination in March 1934 and secured the diploma. Mr. M. Upadhyya secured a diploma in the Government of Bombay Commercial Examination. Mr. Digaria passed the School Certificate Examination in July 1933.

**Junior Examination.**—Four students from the Government Commercial Class secured certificates in various subjects and seven from the Aden Commercial Institution.

The first Art and Craft exhibition of all Aden Schools was held in February 1934.

School Statistics will be found in Appendix XXIX.

#### XII.—PUBLIC WORKS.

The work of maintenance and repair of Government civil buildings is in the charge of the Chairman, Aden Port Trust. The details will be found in Appendix XXX.

During the year under report the Aden Settlement has relaid other public main roads with asphalt in the Fortress including the road starting from the Belfry right upto Gold Mohur Bridge at Steamer Point at a total cost of Rs. 37,775 and has repaired certain parts of the public roads at Sheikh Othman at a total cost of Rs. 5,198.

#### XIII.—MUNICIPAL.

The Municipal administration of Aden is carried out by the Executive Committee of the Aden Settlement subject to the authority of the Chief Commissioner under the powers vested in him by the Aden Settlement Regulation No. VII of 1900 as amended by Regulation No. V of 1919 and 1927.

During the year under review the Committee was composed of the Chairman (an officer of the Bombay Public Works Department) and seven other members who are appointed annually by the Chief Commissioner. Two of these were officials and five non-officials.



The chief sources of revenue to the Settlement Fund are the general House and Property tax, the Sanitary tax, the Vehicle tax, fees from licenses, etc., and octroi duty on Kat—a vegetable product which is a popular stimulant in this part of Arabia.

**Assessment of buildings and lands under Settlement Rules 48, 49 and 51.**—1,470 complaints were received against the rateable values, *i.e.*, annual rents of buildings and lands during the year under report and they were disposed of by the Chairman who was appointed by the Executive Committee to deal with them under Settlement Rule 53. The result of the revision of the rateable values was a reduction of an average of 8 per cent. in the case of properties in the Fortress and 10 per cent. in the case of properties at Sheikh Othman or a total reduction in the rateable values (complained against) in all cases from Rs. 8,29,315 to Rs. 7,58,401.

A statement of the finances of the Fund will be found in Appendices XXXI to XXXIII.

**Electricity.**—The Electrical Department is a separate unit and is under the direct supervision of an Electrical Engineer. The Department is controlled by the Executive Committee of the Aden Settlement.

#### XIV.—PORT ADMINISTRATION.

The Port of Aden, which affords safe accommodation for vessels upto 33 feet in draught (vessels of deeper draught can be handled by working the tides) is administered by a Board of Trustees constituted under the Aden Port Trust Act, V of 1888. The Board is at present composed of four officials including the Chairman, who during the year under review was an officer of the Bombay Public Works Department; and who is also Chairman of the Aden Settlement, and seven non-officials. The Trustees are appointed by the Chief Commissioner for a period of two years. Vacancies during this period are also filled by the Chief Commissioner.

The minimum depth of water at low tide available in the approach Channel and Inner Mooring Basin except the 4 deep water berths, is 32' 6", there are 4 oil berths connected to the land installation by submarine pipe lines 2 of which berths have been dredged to a minimum depth of 35 feet at L. W. There are two other berths dredged to a similar depth available for the supply of bunker Coal and for general purposes.

The Port Trust maintain a Pilot service consisting of Harbour Master and five Pilots.

The Aden Port Trust publish a separate administration report.

Mercantile Marine matters in Aden are the concern of the Government of India who administer them through the Principal Officer, Mercantile Marine Department, Aden. This officer is appointed from the Royal Indian Marine and is also the Superintendent of Lighthouses for the province of Aden.

#### XV.—TRADE.

The trade of Aden is mainly transshipment, the port serving as a centre of distribution to and from neighbouring countries. The principal business is in Coffee, Hides, Skins, Cotton Piece Goods and Salt. The total value of the seaborne trade in the year under report, exclusive of transshipment cargo, was Rs. 8,66,41,672 (imports Rs. 5,20,56,437, and exports Rs. 3,45,85,235)

(10)

15

showing a decrease of Rs. 12,74,897 as compared with the previous year's total of Rs. 8,79,16,569 (imports Rs. 5,36,42,502, and exports Rs. 3,42,74,067) Merchandise increased by Rs. 15,507 while Treasure decreased by Rs. 12,90,404.

The increase of Rs. 15,507 in merchandise is insignificant, and needs no remarks. The decrease of Rs. 12,90,404 in Treasure is due to a fall in imports and exports of M. T. Dollars and Gold Sovereigns. Appendix XXXIV shows the fluctuations in the value of trade for the past ten years.

XVI.—SHIPPING.

The number of vessels, exclusive of country craft, which entered the port of Aden during 1933-34 was 1,630 with an aggregate tonnage of 6,607,276 as compared with 1,529 vessels aggregating 6,242,770 tons in the previous year.

Appendix XXXV shows the number of vessels that called at the Port during the last ten years for (1) cargo and (2) for bunkers only. It will be seen that there has been an increase under (1) from 713 vessels in 1924-25 to 1,154 vessels in 1933-34.

During recent years Aden has developed rapidly as an oil bunkering port. This is due mainly to its favourable geographical position, as it is nearer to the Persian Oil fields than any other port on the main shipping route between Europe and the East, and also to the policy of the Aden Port Trust, which has aimed at giving ample facilities for oil fuelling while keeping the charges on this business as low as possible.

274 steamers entered the Port of Perim during the year of which 160 called for coal and fuel oil and 114 for various purposes.

A statement of the principal steamship companies whose vessels call regularly at Aden and of the services provided by them will be found in Appendix XXXVI.

XVII.—INDUSTRIES.

The chief industries of Aden are the manufacture of Salt and cigarettes. The Italian firm of Messrs. Burgarella Ajola and Company which was established in 1886 carries on a profitable business in Salt production at Sheikh Othman. The Bombay firm of Messrs. Abdullabhoy and Joomabhoy Lalljee and Company also owns a salt work.

The Salt Works belonging to Messrs. Hajeebhoy Laljee and Company and the Little Aden Industrial Salt Company which were started in May 1923 and October 1927 respectively continue to work successfully. The salt manufactured by all these firms is exported chiefly to India. The monopoly of salt for local consumption is in the hands of Government who have licensed certain salt pits to Arabs at Sheikh Othman.

The Salt (Additional Import Duty) Act passed by the Indian Legislature in 1931 and since extended to March 1934 has benefitted the Aden Salt Industry, which under the protection of the duty, supplies about two-thirds of the total salt imports into India.

The cigarette industry is conducted on a fairly large scale by Jews and Greeks with tobacco imported from Egypt.

Other minor industries are dhow building, oil pressing, mat-making, fish-curing and dyeing cloth.

Dhows are built at Maala by a number of Hadhrami merchants settled in Aden. They turn out about five vessels a year, the average carrying capacity of which is about 200 tons. The dhows are constructed of Indian teak from the Malabar coast and are well built and fast. They sail to India (Bombay and Malabar coast) and to the East African coast as well as to neighbouring Arabian ports, and take a large share in local trade in spite of the competition of the coasting steamers of Messrs. Cowasjee Dinshaw and Brothers and of Monsieur A. Besse (Halal Shipping Company).

**Fish Meal Industry.**—The fish meal industry which was established at Gold Mohur Bay, Steamer Point, in February 1933 by Signor Fabbri of the "Roma Fish Meal Company" ceased to function in March 1934.

**Soap Manufacturing Industry.**—A soap manufacturing industry started by Monsieur A. Besse in December 1932 at Maala is progressing satisfactorily. The soap is manufactured by boiling cocoanut oil, and cold processes. Local labour of 40 men is employed. The output is about 50 cases daily, each case containing 200 cakes, which are disposed of locally or exported to the Arabian Coasts.

#### XVIII.—CUSTOMS.

Aden was declared a free port in 1850 and no customs dues are levied. Excise duty is charged on wines and spirits of all kinds, perfumery and intoxicating drugs. Licenses are required for the possession, sale and transport of arms and ammunition, petroleum and explosives.

The Salt and Excise Department is in charge of an Extra Assistant Commissioner who is Collector of Customs, Salt and Excise, assisted by an Excise Inspector from the Bombay Excise Department. Details of the work of this Department will be found in Appendices XXXVII to XLV.

#### XIX.—TRANSPORT.

There were 181 licensed public cars and 51 licensed omnibuses. The number of private cars was 238 and there were 20 licensed lorries. Camels and Camel carts are still largely used for the conveyance of goods. Trade with the interior is conducted mainly by camel caravans.

There is no railway in the Aden Settlement.

**Blue Tours.**—A motor coach service known as the "Blue Tours" introduced into Aden by Mr. A. M. Klauder, an American merchant, for the convenience and transport of passengers from ships is progressing satisfactorily. The two coaches have seating accommodation for 22 persons who are taken round the most important parts of the town, and environs during the ships stay in the harbour.

#### XX.—POST OFFICE.

There is a general Head Post Office at Steamer Point and there are sub-post offices at Crater, Khormaksar, Sheikh Othman, Perim and Kamaran. The postal department is under the control of the Postmaster-General in Bombay. Postal transactions are shown in Appendix XLVI.

The R  
is also the  
During  
District  
Province  
(1) E  
(2) A  
The to  
against 4  
sion in tr  
No do  
report an  
Applic  
to 38.  
The n  
elined fr  
For it  
duty wa  
Two  
of 1865  
No d  
The  
to the se  
gages.  
One  
Act 188  
8 A  
nership  
44 I  
of the  
report.  
Th  
to 3,50  
in the  
The  
transfe  
The  
of Par  
Deaths  
trar, t  
Genera  
Det  
to XL

XXI.—REGISTRATION.

The Registration Department is in charge of the District Registrar who is also the Inspector General of Registration for the province of Aden.

During the year, the following officers were in charge of the office of the District Registrar and the Inspector General of Registration, Aden Province :—

- (1) E. Weston, Esquire, I.C.S., from 1st April 1933 to 5th July 1933 and from 18th September 1933 to 31st December 1933.
- (2) A. F. Ferram, Esquire, I.S.O., from 6th July 1933 to 17th September 1933.

The total number of Registration during the year under report was 412 against 482 of the preceding year. The decrease appears to be due to depression in trade activities.

No documents were refused by the Sub-Registrar during the year under report and hence no appeal was made against the order of the Sub-Registrar.

Applications for copies, searches and inspections have declined from 57 to 38.

The number of visits paid by the Sub-Registrar at private residences declined from 22 to 19.

For insufficiency of stamp duty 3 deeds were impounded and deficit stamp duty was recovered.

Two Parsi marriages were registered under the Parsi Marriage Act XV of 1865 during the year.

No declaration was recorded under the Cutchi Memons Act.

The number of sale certificates rose from 10 to 32. The increase was due to the sale of houses by the Court in pursuance of decrease obtained by mortgagees.

One declaration under the Births, Deaths and Marriages Registration Act 1886 was registered.

8 Applications for Registration of firms and copies under the Indian Partnership Act, 1932 were received during the last 4 months of the year.

44 Bills of Exchange were noted and protested under Sections 99 and 100 of the Negotiable Instruments Act (XXVI of 1881) during the year under report.

The total income under the Head of Registration decreased from 5,609 to 3,509. The decrease is due to fall in the value of properties and to decrease in the number of documents.

The expenditure increased from 2,018 to 3,073. The increase is due to the transfer of the previous Sub-Registrar of Aden.

The Sub-Registrar performs the duties of Notary Public, Aden, Registrar of Parsi Marriages, Aden, Registrar of Firms, Aden, Registrar of Births, Deaths and Marriages, Aden and is Personal Assistant to the District Registrar, the Inspector General of Registration, Aden Province, and the Registrar General of Births, Deaths and Marriages.

Details of the work of this Department will be found in Appendices XLVII to XLXII.

XXII.—TELEPHONES.

Telephones, which were formerly controlled by the Air Ministry were taken over by the Indian Posts and Telegraphs Department in July 1932 and are now operated by the latter.

XXIII.—MISCELLANEOUS.

**Hotels**—There are two well equipped modern hotels under European management at Steamer Point. The larger and more modern of these two is the Crescent Hotel which was built and opened in 1932. The other is the Marina Hotel. There is no hotel in the town of Crater.

**Regatta**.—A Regatta, comprising a number of events in which the local passenger row boats, motor boats, sailing yachts and fishing canoes took part was again held in October 1933.

**Press Reuters**.—The agency of "Reuters" is held by the Agent of the Peninsular and Oriental Steam Navigation Company at Aden. Telegrams are published daily, to which are added the British Official Wireless Press telegrams by arrangement with Headquarters, British Forces at Aden. In the absence of newspapers these telegrams serve a useful purpose in disseminating early current news to the public. The "Times" and other newspapers have part time correspondents, and there is an American news agency.

I have the honour to be,

SIR,

Your most obedient servant,

B. R. REILLY,  
*Chief Commissioner.*

LIST OF APPENDICES.

	PAGES.
I. Names of Gazetted Officers of the Aden Residency . . . . .	21--22
II & III. Names of Chiefs in subordinate alliance with the British Govern- ment . . . . .	23--26
IV. Enactments declared in force or extended by notification under the Schedule Districts Act, 1874, Aden . . . . .	27--38
V. Receipts and Disbursements of the Aden Treasury . . . . .	39
VI. Receipts and disbursements of the Aden Local Fund . . . . .	40
VII. Receipts and disbursements of the Income-Tax . . . . .	41--42
VIII. Receipts of General and Court Fee Stamps . . . . .	43
VIII-A. Receipts and expenditure on Government Schools . . . . .	44
IX. Number of crimes committed . . . . .	45--53
X. Number of offences reported and dealt with by various courts . . . . .	54
XI. Result of appeals against decision passed by criminal courts . . . . .	55
XII. Nature and value of original suits filed and disposed of . . . . .	55
XIII. Result of applications for execution of decrees . . . . .	56
XIV. Number of results of appeals in civil courts . . . . .	56
XV. Number of cases tried and sentences passed by the Court of Sessions . . . . .	57
XVI. Aden Local Police Force . . . . .	58--60
XVII. Cases taken up by the Police, etc. . . . .	61
XVIII. Value of property stolen and recovered . . . . .	62
XIX. Number of prisoners confined in the Aden District Prison . . . . .	63
XX. Expenditure on Leper Asylum . . . . .	64
XXI. Statement showing the working of Lahej Dispensary . . . . .	65
XXII. } to } Statistical figures referred to under X. Public Health . . . . . } XXVII. } to } to }	66 72
XXVIII. Vital Statistics of the Settlement of Aden . . . . .	73
XXIX. Return of all kinds of schools in Aden . . . . .	74--77
XXX. Expenditure on Civil Works . . . . .	78
XXXI. Receipts and Expenditure of the Settlement Fund . . . . .	79
XXXII. Receipts and Expenditure of the Settlement Capital Account . . . . .	80
XXXIII. Receipts and expenditure of the Settlement Revenue Account . . . . .	81
XXXIV. Trade statistics for ten years 1924-25 to 1933-34 . . . . .	82
XXXV. Number of merchant vessels landed and took cargoes and the number of steamers called for bunkers only . . . . .	83
XXXVI. Statement showing the principal steamship companies whose vessles call regularly at Aden . . . . .	84--86
XXXVII. Receipts of Excise Departments, Aden and Perim . . . . .	87

'Administration Report of Aden for the year ending 31 March 1934' [12v] (29/106)

	PAGES.	
XXXVIII.	Receipts on account of Opium . . . . .	88
XXXIX.	Comparative statement of receipts and charges on account of Excise I department during the financial years 1932-33 and 1933-34 . . . . .	89
XL.	Memorandum showing the Excise Receipts at Aden and Perim during the year 1933-34 . . . . .	90
XLI.	Comparative statement of revenue, etc., on account of Opium in the Aden Treasury during the official year 1932-33 and 1933-34 . . . . .	91
XLII.	Number of Excise shops and other revenue . . . . .	92
XLIII.	Statement showing revenue realised from Petroleum and Explosives . . . . .	93
XLIV.	Statement of receipts and charges of the Salt Department . . . . .	94
XLV.	Statement showing the recoveries made over to the Aden Settlement . . . . .	95
XLVI.	Transactions of the Post Office . . . . .	96
XLVII to LII.	Statistical figures of the Registration Department . . . . .	97—104
	Result of applications for execution of decrees . . . . .	
	Number of results of appeals in civil courts . . . . .	
	Number of cases tried and sentences passed by the Court of Sessions . . . . .	
	Aden Local Police Force . . . . .	
	Cases taken up by the Police, etc. . . . .	
	Value of property stolen and recovered . . . . .	
	Number of prisoners confined in the Aden District Prison . . . . .	
	Expenditure on Labor . . . . .	
	Statement showing the working of Labor Dispensary . . . . .	
	Statistical figures referred to under X. Public Health . . . . .	
	Statistical figures referred to under X. Public Health . . . . .	
	Vital Statistics of the Settlement of Aden . . . . .	
	Return of all kinds of schools in Aden . . . . .	
	Expenditure on Civil Works . . . . .	
	Receipts and Expenditure of the Settlement Fund . . . . .	
	Receipts and Expenditure of the Settlement Capital Account . . . . .	
	Receipts and Expenditure of the Settlement Revenue Account . . . . .	
	Trade statistics for ten years 1924-25 to 1933-34 . . . . .	
	Number of merchant vessels loaded and took cargo and the number of steamers called for cargoes only . . . . .	
	Statement showing the principal steamship companies whose vessels call regularly at Aden . . . . .	
	Receipts of Excise Departments, Aden and Perim . . . . .	

Name of  
Mr. E. West  
Mr. R. S.  
O.B.E.  
Lieutenant  
C. Lake.  
Mr. R. S.  
O.B.E.  
Major H.  
Carnac.  
Lieutenant  
C. Lake  
Major H.  
Carnac  
Captain  
both  
Lieuten  
C. La  
Captai  
Captai  
Captai  
guss  
Captai  
both  
Lieuten  
ton.  
Mr. A  
I.S.C  
Mr. C.

(13)

APPENDIX I.

PAGES,

88

89

90

91

92

93

94

95

96

97-104

Name of officers.	Appointments.	Period.	
		From	To
Mr. E. Weston, I.C.S.	District and Sessions Judge.	1st April 1933 . 18th September 1933.	4th July 1933. 31st March 1934.
Mr. R. S. Champion, O.B.E.	Political Secretary .	1st April 1933 .	21st April 1933.
Lieutenant-Colonel M. C. Lake.	Acting Political Secretary.	22nd April 1933 .	21st October 1933.
Mr. R. S. Champion, O.B.E.	Political Secretary	22nd October 1933.	16th December 1933.
Major H. G. Rivett-Carnac.	Acting Political Secretary.	17th December 1933.	11th February 1934.
Lieutenant-Colonel M. C. Lake.	Acting Political Secretary .	12th February 1934. 15th March 1934 .	14th March 1934. 31st March 1934.
Major H. G. Rivett-Carnac.	Civil Secretary .	1st April 1933 .	25th October 1933.
Captain T. Hickinbotham.	Acting Civil Secretary. Civil Secretary .	26th October 1933 4th February 1934	3rd February 1934. 31st March 1934.
Lieutenant-Colonel M. C. Lake.	Political Officer .	1st April 1933 .	25th October 1933.
Do.	Do.	24th February 1934.	31st March 1934.
Captain B. W. Seager .	Acting Political Officer.	8th December 1933.	23rd February 1934.
Captain H. V. Rose .	Personal Assistant to the Chief Commissioner.	1st April 1933 .	20th June 1933.
Captain K. A. P. Ferguson, R. A.	A. D. C. to the Chief Commissioner.	21st June 1933 .	22nd October 1933.
Captain T. Hickinbotham.	Personal Assistant to the Chief Commissioner.	23rd October 1933	20th December 1933.
Lieutenant H. G. Burton.	Do.	21st December 1933.	31st March 1934.
Mr. A. F. Ferram, I.S.O.	Extra Assistant Commissioner.	1st April 1933 .	31st March 1934.
Mr. C. C. Davey .	Government Agent, Perim.	1st April 1933 .	18th June 1933.



APPENDIX I—*contd.*

Name of officers.	Appointments.	Period.	
		From	To
Mr. R. A. Sinclair .	Acting Government Agent, Perim.	19th June 1933 .	26th October 1933.
Mr. C. C. Davey .	Government Agent, Perim.	27th October 1933	31st March 1934.
Mr. M. Yaseen Khan, B.A., LL.B.	Registrar, District, Court, Aden.	1st April 1933 .	31st March 1934.
Mr. J. V. Alexander, M.I.C.E.	Acting Chairman, Aden Port Trust.	1st April 1933 .	20th August 1933.
Mr. F. B. Taylor .	Acting Chairman, Aden Settlement.	Do . . .	Do.
Lieutenant-Colonel D. S. Johnston, C.I.E., R.E.	Chairman, Aden Port Trust and Settlement.	21st August 1933 .	31st March 1934.
Lieutenant-Colonel E. S. Phipson, D.S.O., M.D., M.R.C.P., D.P.H., I.M.S.	Civil Administrative Medical Officer, P. H. O. and Medical Officer-in-charge E.G. Hospital.	1st April 1933 .	31st March 1934.
Commander C. R. Bluett, R.I.M.	Principal Officer Mercantile Marine Department, Aden District.	1st April 1933 .	2nd December 1933.
Commander M. P. Cooper, R.I.M.	De. . . .	3rd December 1933.	31st March 1934.
Mr. R. H. Haslam .	Commandant of Police.	1st April 1933 .	<del>21st</del> <sup>31st</sup> March 1934.
Captain G. V. Ropner .	Assistant Commandant of Police.	1st April 1933 .	9th April 1933.
Mr. E. B. Pratt . . .	Acting Assistant Commandant of Police.	10th April 1933 .	25th August 1933.
Captain G. V. Ropner.	Assistant Commandant of Police.	26th August 1933	31st March 1934.
Mr. M. I. Farooqui, M.A., D.D.R.E.	Deputy Educational Inspector.	1st April 1933 .	31st March 1934.
Mr. Zahar Hamza, B.A.	Assistant Education Officer.	9th October 1933.	31st March 1934.

APPENDIX II.  
POLITICAL RELATIONS.  
Protectorate States and Confederations.

14

No.	Names of States.	Tribute in men or money.		Estimated population.	Schools.	Persons taught.	Persons who have been vaccinated.	Prevailing diseases.	Gross revenue.	Military forces.	Transit dues or not.	Principal articles of produce.
		Amount.	To whom paid.									
1	Abdali			35,000	One in each Masjid.				Rs. 2,75,000		Yes.	<i>In the low country.</i> —Jowari (red and white); sesame from which oil is manufactured; cotton to a small extent; madder for dyeing purposes; waras or saffron and a little indigo from which the favourite Arab cloth is dyed.
2	Mukalla and Shihar.			300,000	Do.				12,50,000		Yes.	
3	Fadhli			20,000	Do.				35,000		No, but protection fees	
4	Amiri			50,000	Do.				18,000		Yes.	
5	Yafai			150,000	Do.				22,500		No.	
6	Socotra and Qishn.			12,000	Do.				..		Yes.	
7	Haushabi			15,000	Do.				30,000		Yes.	<i>In the hills.</i> —Wheat, madder fruits, coffee and a considerable quantity of wax and honey.
8	'Aundhali			7,000	Do.				2,000		Yes.	
9	'Aulaqi			45,000	Do.				3,000		Yes.	
10	Qoveibi			1,400	Do.				3,000		No.	
11	'Akawi			1,000	Do.				2,000		No.	
12	'Aqrabi			20,000	Do.				8,000		Yes.	
13	'Subeili			5,000	Do.				3,000		Yes.	
14	Balahaf			3,000	Do.				3,000		Yes.	
15	Bir Ali			500	Do.				2,000		Yes.	
16	Irqa			300	Do.				..		..	
17	Haura			6,000	Do.				..		..	
18	Beihan				Do.				..		No.	

APPENDIX II.  
POLITICAL RELATIONS.  
Protectorate States and Confederations.

To  
h October 1933  
t March 1934.  
t March 1934.  
b August 1933.  
Do.  
t March 1934.  
March 1934.  
December 3.  
March 1934.  
March 1934.  
April 1933.  
August 1933.  
March 1934.  
March 1934.  
March 1934.

APPENDIX III.  
Treaty and Confederated Chiefs.

No.	Names of Chiefs.	Residence.	Political relations with His Majesty's Government. Treaty date.	Caste, race or religion.	Age.	Salutes.	Family follows primogeniture or not.	Male relatives.
1	H. E. Sultan Sir Abdul Karim bin Fadh bin Ali, K.C.L.E., The Abdaal	Lahej	2nd February 1839	Moslim.	52	11	The eldest and most able of the family succeeds by election.	2 sons, 1 brother and 24 cousins.
2	H. E. Sultan Omar bin Awardh	Mukalla	1st May 1888		56	11		2 sons and 1 nephew.
3	Sultan Abdalla bin Hussein, The Fadhli	Shuqra	4th August 1888		51	9		4 sons and 1 brother.
4	Amir Nasr bin Shaif, The Amiri	Dhala	28th November 1904.		52	9		7 brothers, 4 nephews, 2 cousins and 3 sons.
5	Sultan Ali bin Salim bin Ahmad bin Saif bin Ahmad bin Arafat of Qsbin and Soofra	Soofra	23rd April 1886		..	9		3 sons and 3 cousins.
6	Sultan Aidarus bin Mohsin bin Ali, The Lower Yafai.	All-Qara	1st August 1895		52	9		1 son, 2 cousins and 2 brothers.
7	Sultan Mohamed bin Saleh bin Omer (Upper Yafai).	Mahjaba	21st October 1903		32	..		1 brother.
8	Sheikh Babakr Ali Askar } Sheikh Mohamed Mohsin } Askar. } Mausatfa.	Al-uma	3rd July 1903		57	..		6 sons and 6 nephews.
9	Sheikh Salim Saleh (The Dhubi)	Di-wura	11th May 1903		56	..		2 sons, 1 brother, 5 nephews and 4 cousins.
10	Sheikh Kaseim bin Abdurrahman bin Kaseim, The Mudabi.	Al-Jubra	27th August 1903	57	..	2 sons and 2 cousins.		
11	Sheikh Motahar, Mans', The Saqladi	Bakhal	14th December 1903.	69	..	1 brother.		
12	Sheikh Mohamed bin Mohsin, The Hachrumi.	Shibr	26th September 1903.	46	..	2 sons.		
13	Sultan Mohsin 'Ali bin Man', The Hausabi.	Museimir	6th August 1895	29	..	Under co-regency of father and uncles.		
14	Sultan Saleh bin Husen Jibil, The Arudahi.	Lauder	1912	17	..	2 sons, 12 nephews, 7 cousins and 2 brothers.		
15	Sultan Saleh bin 'Abdulla, The Upper Aulagi Sultan.	Nisab	18th March 1904	66	..	4 brothers, 3 sons, 9 nephews and 18 cousins.		
16	Sheikh Mohsin bin Farid, The Upper Aulagi Sheikh.	Yeshbun	8th December 1903.	68	..	2 sons.		
17	Sultan Aidarus bin Ali, The Lower Aulagi.	Alwar	2nd June 1888	59	..	1 brother, 1 son, 8 cousins and 1 nephew.		
18	Sheikh Hasan Ali, The Qofeibi	Dil-Hujjair	3rd June 1915	36	..	2 sons, 14 cousins, 1 nephew.		
19	Sheikh 'Mohsin bin Ali Nashir, The 'Alawi.	Al-Kashaa	16th July 1895	..	..	3 brothers.		
20	Sheikh Fadh bin 'Abdulla Ba Haidara Al 'Aqabi.	Bir Ahmed	15th July 1888	50	..	7 cousins.		
21	Sheikh Mohamed bin Ali Ahmed Am-Tomni, The Barhimi.	Khor Omeria	26th September 1889.	45	..	2 sons and 28 cousins.		
22	Sheikh Hawash bin Sa'id, The Atif	Huwairib	17th September 1889.	43	..	..		
23	Sheikh Mohammed Ali Ba Saleh Ba Rajeh, The Aghl.	Al-Khatabia and Mesaneh	Do.	17	..	..		
24	Sheikh Saleh bin Awardh. Am-Rijai The Rijai.	Am-Rija'	15th May 1871	49	..	..		

APPENDIX III—contd.  
Treaty and Confederated Chiefs—contd.

No.	Names of Chiefs.	Residence.	Political relations with His Majesty's Government. Treaty date.	Caste, race or religion.	Age.	Salutes.	Family follows primogeniture or not.	Male relatives.
25	Sheikh Ali bin Murshid bin Nasir, The Makl dumi.	Marasa	15th May 1897	Moslim.	17	..	The eldest and most able of the family succeeds by election.	18 cousins.
26	Sheikh Mohammed bin Shahir bin Sait, The Mansuri.	Am-Misharij.	13th May 1871		12	..		1 uncle, 4 brothers and 10 cousins.
27	Sheikh Abd Mukbil, The Durbaini	Tafih	1912		17	..		..
28	Sultan Ali bin Mohsin bin Saleh Balahaf.	Balahaf and Azzan.	13th November 1905.		34	..		2 brothers, 1 uncle and 25 cousins.
29	Sultan Nasir bin Talib of Bir Ali	Bir Ali	13th April 1888		53	..		Not known.
30	Sheikh Ahmed Awadh Badas	Irga	7th January 1902.		78	..		1 brother and 2 sons.
31	Sheikh Awa l bin Saleh Ba Shahid	Haura	7th April 1902		51	..		Not known.
32	Sharif Ahmed Am Mohsin of Beihan.	Beihan	29th December 1903.		67	..		4 sons, 2 brothers, 12 nephews and 5 cousins.

APPENDIX IV.  
... under the Scheduled Districts Act, 1874, Aden.

31	Sheikh Awa I bin Saleh Ba Shahid	Haura	7th April 1902	51	..	Not known.
32	Sharif Ahmed Am Mohsin of Beihan.	Beihan	29th December 1903.	67	..	4 sons, 2 brothers, 12 nephews and 5 cousins.

APPENDIX IV.

Enactments declared in force or extended by notification under the Scheduled Districts Act, 1874, Aden.

Year.	No.	Short title of subject.	Places in or to which declared in force or extended.	Exceptions, restrictions and modifications.	Notifications.
1827	XXXV	State Prisoners	Declared in force in Aden.	(1) <i>Bombay Regulation</i> . Except the following portions, namely:— The first clause of section 4 and the words "or the Judge on circuit" in the second clause of the same section; section 6; the last twenty words of the preamble; and the last five words of section 7.	No. 704, dated the 20th June 1879: In exercise of the power conferred by section 8 of Act XIV of 1874 (the Scheduled Districts Act), the Governor of Bombay in Council is pleased, with the previous sanction of the Governor-General in Council, to declare that each of the enactments mentioned in the schedule hereto annexed is in force in Aden to the extent mentioned in the third column of the said schedule.
					2. Nothing herein contained shall be deemed to affect the operation of any enactment in force in Aden and not mentioned in the said Schedule. (Here follows the Schedule, which contains, among other enactments, Bombay Regulation XXV of 1827.)

(See *Gazette of India*, 1879, Part I, p. 434, and *Bombay Government Gazette*, 1879, Part I, p. 624.)

16

'Administration Report of Aden for the year ending 31 March 1934' [17r] (36/106)

APPENDIX IV—contd.

Year	No.	Short title of subject.	Places in or to which declared in force or extended.	Exceptions, restrictions and modifications.	Notifications.
1927	XXV	State Prisoners	Declared in force in the Island of Perim.	(1) <i>Bombay Regulation</i> —contd. Except the following portions, namely:— The first clause of section 4 and the words "or the Judge on circuit" in the second clause of the same section; section 6; the last twenty words of the preamble; and the last five words of section 7.	No. 7478, dated the 18th December 1886:—in exercise of the power conferred by section 3 of the Scheduled Districts Act, XIV of 1874, the Governor of Bombay in Council is pleased, with the sanction of the Governor-General in Council, to declare that each of the enactments mentioned in the schedule hereto annexed is in force in the Island of Perim to the extent mentioned in the third column of the said schedule.
					2. Nothing herein contained shall be deemed to affect the operation of any enactments in force in the Island of Perim and not mentioned in the said schedule. (Here follows the schedule, which contains, among other enactments, Bombay Regulation XXV of 1874.)
					(See <i>Gazette of India</i> , 1887, Part I, P. 5, and <i>Bombay Government Gazette</i> , 1886, Part I, P. 1061.)

28

Year	No.	Short title of subject.	Places in or to which declared in force or extended.	Exceptions, restrictions and modifications.	Notifications.
1843	V	The Indian Slavery Act, 1843.	Declared in force in Aden.	(2) <i>Act of the Governor-General in Council</i> . Except the following portions, namely:— In section 1, the first seven words; in sections 2 and 3 the final clause; and in section 4 the first six words.	Notification No. 704, dated 20th June 1879, <i>supra</i> , P. 19.
"	"	Do.	Declared in force in the Island of Perim.	Ditto	Notification No. 7478, dated 18th December 1886, <i>supra</i> , P. 19.
1847	XX	The Indian Copyright Act, 1847.	Declared in force in Aden.	Except the following portions, namely:— Sections 4 and 17; in section 3 the first six words and the words "and that"; in section 5 the first eleven words and the words "and that"; in section 6 the first five words and the words "and that"; in section 7 the first five words and the words "after the passing of this Act," and "in such part of the said territories;" and from "if he applies," so far as it extends down to "clause," so far as it extends down to "to," no Zilla Court; in sections 8 and 9 the first twelve words; in sections 10 and 11 the first six words; in sections 12 to 14 the whole; in section 15 the words; in section 18 the word "that," where it occurs after the words "trover and"; and in section 16 the words "action, suite bill."	Notification No. 704, dated 20th June 1879, <i>supra</i> , P. 19.

29

17

APPENDIX IV—contd.

Year.	No.	Short title of subject.	Places in or to which declared in force or extended.	Exceptions, restrictions and modifications.	Notifications.
1847	XX	The Indian Copyright Act, 1847—contd.	(2) Acts of the Governor-General in Council—contd. Declared in force in the Island of Perim.	Sections 4 and 17; in section 3 the first six words and the words "and that"; in section 5 the first eleven words and the words "and that"; in section 6 the words "stamp or duty"; in section 6 the first five words and the words "and that"; in section 7 the first five words and the words "and that"; in section 8 the words "and that"; in section 9 the words "and that"; in section 10 the words "and that"; in section 11 the first six words; in sections 12 to 16 (both inclusive) the first five words; in section 13 the word "that"; in section 14 the words "trover and"; and in section 16 the words "sections, suits bills".	Notification No. 7478, dated 18th December 1886, <i>supra</i> , p. 16.
1860	XI	The Indian Regis- tration Act, 1841 Amendment Act, 1850.	Declared in force in Aden.	Except section	Notification No. 704, dated 20th June 1879, <i>supra</i> , p. 16.
"	"	Do.	Declared in force in the Island of Perim.	Ditto	Notification No. 7478, dated 18th December 1886, <i>supra</i> , p. 16.
"	XXXIV	The State Prisoners Act, 1850.	Declared in force in Aden.	Ditto	Notification No. 704, dated 20th June 1879, <i>supra</i> , p. 16.
"	"	Do.	Declared in force in the Island of Perim.	Ditto	Notification No. 7478, dated 18th December 1886, <i>supra</i> , p. 16.
1862	XXX	The Indian Naturali- zation Act, 1825.	Declared in force in Aden.	Except the following portions, name- ly:— Section 9; and in the schedule the words "as dependent thereon, and the term and auth- ority to the East India Com- pany."	Notification No. 704, dated 20th June 1879, <i>supra</i> , p. 16.
"	"	Do.	Declared in force in the Island of Perim.	Ditto.	Notification No. 747, dated 18th December 1886, <i>supra</i> , p. 16.
1865	XXIV	The Penal Servitude Act, 1855 (sections 1 to 4, 8 and 13 to 15).	Declared in force in Aden.	Except the following portions, name- ly:— In section 1 the words "after the commencement of this Act", "in the possession, and", "the East" and "Company".	Notification No. 704, dated 20th June 1879, <i>supra</i> , p. 16.
"	"	Do.	Declared in force in the Island of Perim.	Ditto.	Notification No. 7478, dated 18th December 1886, <i>supra</i> , p. 16.
1866	XI	The European Deser- tions Act, 1866.	Declared in force in Aden.	Except the following portions, name- ly:— In the title and the preamble the words "and of the East India Company"; in section 2 the words "for and the title- holders of the Islands of Malacca, Singapore and Malacca"; and "Joint Magistrate"; in section 4 the words and the figures "Act 1866"; and in sections 5, 6 and 7 the words "Joint Magistrate."	Notification No. 704, dated 20th June 1879, <i>supra</i> , p. 16.
"	"	Do.	Declared in force in the Island of Perim.	Ditto.	Notification No. 7478, dated 18th December 1886, <i>supra</i> , p. 16.

APPENDIX IV—contd.

Year.	No.	Short title of subject.	Places in, or to which declared in force or extended.	Exceptions, restrictions and modifications.	Notifications.
1865	III	The State Prisoners Act, 1865.	(2) Acts of the Governor-General in Council—contd. Declared in force in Aden.	Except section 1.	See Notification No. 704, dated 20th June 1879, <i>supra</i> , p. 16.
"	"	Do.	Declared in force in the Island of Perim.	Ditto.	See Notification No. 7478, dated 18th December 1879, <i>supra</i> , p. 16.
1869	I	The Ludiana Merchant Shipping Act, 1923.	Declared in force in Aden.		
"	"	Do.	Declared in force in the Island of Perim.		
"	III	Cantonment Joint Magistrate.	Declared in force in Aden.	Except the following portions, namely:— Sections 5, 9, 10 and 11; in the title, the last eight words; and in the preamble the words "and the Registrar of Deeds within the same limits."	Notification No. 704, dated 20th June 1879, <i>supra</i> , p. 16.
"	"	Do.	Declared in force in the Island of Perim.	Ditto.	Notification No. 7478, dated 18th December 1886, <i>supra</i> , p. 16.
"	XV	Patents (as amended by the Patents and Designs Act, 1872).	Declared in force in Aden.	Except sections 13, 36 and 37.	Notification No. 704, dated 20th June 1879, <i>supra</i> , p. 16.
"	"	Do.	Declared in force in the Island of Perim.	Ditto.	Notification No. 7478, dated 18th December 1886, <i>supra</i> , p. 16.
1863	XVI	The Excise (Spirits) Act, 1863.	Declared in force in Aden.		Notification No. 704, dated 20th June 1879, <i>supra</i> , p. 16.
"	"	The Excise (Spirits) Act, as amended by the Indian Tariff Act, 1864.	Declared in force in the Island of Perim.		Notification No. 7478, dated 18th December 1886, <i>supra</i> , p. 16.
1864	III	The Foreigners Act, 1864.	Declared in force in Aden.	Except the last fifteen words of section 24.	Notification No. 704, dated 20th June 1879, <i>supra</i> , p. 16.
"	"	Do.	Declared in force in the Island of Perim.	Ditto.	Notification No. 7478, dated 18th December 1886, <i>supra</i> , p. 16.
"	IV	The Whipping Act, 1864 (as amended by the Whipping Act, 1909).	Declared in force in Aden.	Except sections 8 to 12 (both inclusive).	Notification No. 704, dated 20th June 1879, <i>supra</i> , p. 16.
"	"	Do.	Declared in force in the Island of Perim.		
1865	XI	Mufassal Small Causes Courts.	Do.	Except sections 7 to 12 (both inclusive). Except the following portions, namely:— Sections 8 to 11 (both inclusive); section 19; sections 22 to 28 (both inclusive); sections 42 and 43; section 2 from the beginning down to "Provided that" and words "Provided that" and from and including the words "and all suits" down to the end of the section; in section 12 the words "and the Registrar of Deeds"; "Registrar of Deeds", so much as relates to the trial of small suits in Military bazars, cantonments and the Island of Perim; Madras and the last twenty-one words; in section 13 the last nineteen words; and in section 15 the words "in the manner prescribed in the manner" and the words "and contained in the twenty-second, twenty-third, twenty-fourth and twenty-fifth sections of this Act."	Notification No. 7478, dated 18th December 1886, <i>supra</i> , p. 16. Ditto.



'Administration Report of Aden for the year ending 31 March 1934' [20r] (39/106)

APPENDIX IV—*contd.*

Year.	No.	Short title of subject.	Places in or to which declared in force or extended.	Exceptions, restrictions and modifications.	Notifications.
1866	XV	The Parsi Marriage and Divorce Act, 1865 (as amended by subsequent Acts of the Governor-General in Council).	Declared in force in the Settlement of Aden and its Dependencies, inclusive of the villages of Sheikh Ohman, Imad and Hiswa, the Island of Perim and Little Aden.	....	No. 1805, dated the 18th March 1901. By virtue of the power conferred by section 3 of the Scheduled Districts Act, 1874, the Governor in Council is pleased with the sanction of the Council to declare that the Parsi Marriage and Divorce Act (XV of 1865) as amended by subsequent Acts of the Governor-General in Council and Act No. 1865 (an Act to amend the law relating to the investigation to investigate Succession among the Parsis), are in force in the Settlement of Aden and its Dependencies inclusive of the villages of Sheikh Ohman, Imad and Hiswa, the Island of Perim and Little Aden.
"	XXI	The Parsi Intestate Succession Act, 1865.	Do.	....	See <i>Gazette of India</i> , 1891, Part I, page 170, and <i>Bombay Government Gazette</i> , 1891, Part I, page 251.
1867	XXV	The Press and Registration of Books Act, 1867.	Declared in force in Aden.	Except sections 2 and 23	Notification No. 1805, dated 18th March 1901, <i>supra</i> , p. 21.
"	"	Do.	Declared in force in the Island of Perim.	Ditto	Notification No. 704, dated 20th June 1879, <i>supra</i> , p. 16. Notification No. 1805, dated 18th March 1901, <i>supra</i> , p. 21.
"	"	Do.	Declared in force in Aden.	....	Notification No. 704, dated 20th June 1879, <i>supra</i> , p. 16.
1882	IV	Transfer of Property	Declared in force in the Island of Perim, Aden and Sheikh Ohman and amended by Act VI of 1904.	Only sections 64 (paras. 2 and 3), 89, 107 and 123 extended.	Notification No. 7478, dated 18th December 1886, <i>supra</i> , p. 16. Notification No. 10788, dated 4th November 1907.
1932	II	Regulation to provide for the extension of the law in force in province of Aden and for the extension of other enactments thereto.	Province of Aden.	....	Government of India, Legislative Department, Notification No. 97/32-P., dated 31st March 1932.
"	IX	Indian Partnership Act.	Whole of British India (including Aden).	....	....
1933	I	Regulation to amend the Aden Laws Regulations, 1932.	Province of Aden.	....	Government of India, Legislative Department, Notification No. 97/32-P., dated 31st March 1932.
1863	V	Public Conveyances (Bombay Town, Bazaar and Harbours and Harbours) Act VII of 1920.	(3) Acts of the Governor of Bombay in Council.	Except the following portions, namely:— Sections 38 and 38; and in section 7 the words "standing in the name of the Commissioner of Customs".	Notification No. 704, dated 20th June 1879, <i>supra</i> , p. 16.
1866	III	Gambling (now Act IV of 1887).	Do.	Except section 15	Ditto.

20

'Administration Report of Aden for the year ending 31 March 1934' [21r] (40/106)

APPENDIX IV—contd.

Year.	No.	Short title of subject.	Places in or to which declared in force or extended.	Exceptions, restrictions and modifications.	Notifications.
1867	III	Cantonments	(3) Acts of the Governor in force in Aden.	Except the following portions, namely:— Section 28, in section 15 the words and figures "Bombay Act No. IV of 1865 (an Act for the Regulation of Mufassal Gaols and the enforcement of discipline in the gaols); "Other" and the words "and Regulations"; "or Regulation," "or Regulations" wherever they occur.	Notification No. 704, dated 20th June 1879.
"	VII	District Police (now Act IV of 1890).	Do.	Except sections 2, 12 and 40.	Do.
"	"	Do.	Declared in force in the Island of Perin.	Except the following portions, namely:— Sections 2, 12 and 40; and the last nine words of section 26.	Notification No. 7478, dated 18th December 1880, <i>supra</i> , p. 16.
1874	II	Jails (as amended by Bombay Act II of 1883). (Place repealed by Act IX of 1891.)	Do.	Except the following portions, namely:— Section 1; the first twenty-three words of section 6; and the first thirteen words of section 7.	Notification No. 7475, dated 18th December 1886, <i>supra</i> , p. 10.
1876	"	Slave Trade Act	Kaiti, Wahidi, Behan, Audali, and Bada Tribes near Aden.	See column 6	Government of India, Foreign Department, Notification No. 2182-G., dated 21st November 1913.
1890	IV	District Police	Extended to Aden as defined in section 2 of Regulation II of 1891.		No. 1191, dated the 20th February 1892: In exercise of the powers conferred by sections 5 and 5-A of the Scheduled Districts Act (XIV of 1874), the Government of India, in exercise of the powers conferred by section (2) of the Repealing and Amending Act (XII

36

37

of 1891) and with the previous sanction of the Governor-General in Council the Government of Bombay in Council has directed that the Aden, as defined in section 2 of the Aden Laws Regulation (II of 1891), the Bombay District Police Act (Bombay Act IX of 1891) and the following restrictions and modifications, *viz.*:—  
(1) for the purposes of the said Act, Aden defined as aforesaid, shall be deemed to be a district of the Presidency of Bombay;  
(2) the Political Resident, Aden, for the time being shall be deemed to be the Inspector General of Police appointed by Government for the said District and the Inspector General of Police for the said District shall have no authority under the said Act in the said district;  
(3) any power or authority conferred by the said Act upon a Commissioner may be exercised in the said District by the Political Resident, Aden, for the time being;  
(4) for section 32 of the said Act the following shall be deemed to be substituted, *viz.*:— "officer shall be deemed to be the Inspector General of Police for all purposes of this Act, and shall always on duty."  
(5) for the first twenty-three words of section 6 of the said Act the word "whenever" shall be deemed to be substituted;  
(6) Sub-sections (1) and (2) of section 1 and section 76 of the said Act shall be deemed to be repealed.  
(See *Gazette of India*, 1892, Part I, p. 134, and *Bombay Government Gazette*, 1892, Part I, p. 189.)

(21)

APPENDIX IV—concl.

Year.	No.	Short title of subject.	Places in or to which declared in force or extended.	Exceptions, restrictions and modifications.	Notifications.
1890	XI	Prevention of Cruelty to Animals (Amended by Act XIII of 1922 and IX of 1923).	(3) Acts of the Governor of Bombay in Council—concl. Settlement of Aden.	....	Bombay Government, Judicial Department, Notification No. 3894, dated 5th July 1907. (See <i>Bombay Government Gazette</i> , p. 1171, dated 11th July 1907, Part I.)
1899	XIII	Glanders and Farcy Act.	Settlement of Aden and its Dependencies (for the time being) inclusive of the villages of Sheikh Othman, Imad and Hiswa, the Island of Perim and Little Aden.	....	Bombay Government, Revenue Department, Notification No. 705, dated 23rd January 1907. (See <i>Bombay Government Gazette</i> , p. 131, dated 24th January 1907, Part I.)
1933	VI	Aden Civil and Criminal Justice Regulation.	Province of Aden.	....	

II. Taxe  
III. Salt  
VI. Exci  
VII. Sta  
IX. Reg  
XVII. A  
XVIII.  
XIX. P  
XX. Po  
XX (1)  
  
XXI. P  
XXII.  
XXIII  
XXIV.  
XXVI  
XXVII  
XXX.  
XXXI  
  
XXX  
XXX  
  
D—  
m  
  
H—  
Supe  
Refu  
Misc

to R  
expe  
£1,5

22

APPENDIX V.

Statement showing the Revenue and Expenditure for the year 1933-34.

Heads of Accounts.	Revenue.	Expenditure.	Remarks.
	Rs.	Rs.	
II. Taxes on Income . . . . .	3,64,393	14,951	
III. Salt . . . . .	1,03,846	2,747	
VI. Excise . . . . .	1,78,060	17,836	
VII. Stamps . . . . .	72,337	2,971	
IX. Registration . . . . .	2,889	3,228	
XVII. Administration of Justice . . . . .	7,918	48,212	
XVIII. Jails and Convict Settlements . . . . .	1,653	16,381	
XIX. Police (Armed and Unarmed) . . . . .	63,350	3,31,522	
XX. Ports and Pilotage . . . . .	11,317	31,807	
XX (1). Lighthouses and Lightships . . . . .	1,07,203*	27,131	
XXI. Education . . . . .	20,008	62,289	
XXII. Medical . . . . .	19,849	90,813	
XXIII. Public Health . . . . .	41,106	48,152	
XXIV. Agriculture . . . . .	2,153	4,090	
XXVI. Miscellaneous . . . . .	2,420	3,840	
XXVII. Currency . . . . .	..	336	
XXX. Civil Works . . . . .	2,406	99,222	
XXXIII. Receipts in aid of Superannuation.	25,337	..	
XXXIV. Stationery and Printing . . . . .	929	918	
XXXV. Miscellaneous . . . . .	46,451	..	
D—General Administration. { Residency office 1,26,760 Treasury office 13,777 Trade Registration Department 12,112 }	..	1,52,649	
H—Ecclesiastical . . . . .	..	12,668	
Superannuation Pension . . . . .	..	26,845	
Refunds . . . . .	..	1,01,962	
Miscellaneous . . . . .	..	28,407	
Total . . . . .	10,73,625	11,28,977	

\*Includes Light dues paid by ships proceeding to India.  
*Note.*—His Majesty's Government make an annual contribution of £8,000 equivalent to Rs. 1,06,666-10-3 towards the cost of the Aden Police Force which reduces the total expenditure payable by the Government of India to Rs. 10,22,310.  
 His Majesty's Government have also agreed to make an annual contribution of £1,500 equivalent to Rs. 20,000 towards the Civil Hospital for 3 years from 1931-32.

A. F. FERRAM,  
 Treasury Officer, Aden.

'Administration Report of Aden for the year ending 31 March 1934' [22v] (43/106)

APPENDIX VI.

Statement of Receipts and Disbursements of the Aden Local Fund for the year 1933-34.

	Opening.	Total.	Closing balance.
Aden Cantonment Fund . . . . .	..	..	..
Steam Vessel Survey Fund . . . . .	58 12 0	58 12 0	58 12 0
<b>Total Rupees . . . . .</b>	<b>58 12 0</b>	<b>58 12 0</b>	<b>58 12 0</b>

H. M.'s Treasury Office,  
Aden ;  
The 9th June 1934.

A. F. FERRAM,  
Treasury Officer, Aden.

Includes light dues paid by ships proceeding to India  
His Majesty's Government make an annual contribution of Rs. 20,000 equivalent to Rs. 1,00,000-10-3 towards the cost of the Aden Police Force which reduce the total expenditure payable by the Government of India to Rs. 10,22,312.  
His Majesty's Government have also agreed to make an annual contribution of Rs. 20,000 towards the 1933 Hospital for 3 years from 1931-32.

A. F. FERRAM,  
Treasury Officer, Aden.

Comparati  
Sala  
Paid by Lo  
rities.  
Paid by o  
other pub  
and Asso  
Paid by pr  
ployers  
agreement  
Collector  
Income der  
house pr  
Income der  
business.  
Professiona  
Surcharge  
Income de  
other  
salaries  
ej in ite  
to 4.  
Other sour  
Super-tax  
surcharge  
On Securit  
ement  
On pensio  
Surcharge  
and sale  
Other arre  
vious y  
Surcharge  
Pe  
Recoverie  
tax on  
by Gov  
Penal  
under  
(I) (on  
recover  
penally  
shown

(23)

APPENDIX VII.

Comparative statement of receipts and charges on account of Income-tax during the years 1932-33 and 1933-34.

Fund for the

Closing balance,

58 12 0

58 12 0

ERRAM,  
Officer, Aden.

	1932-33.	1933-34.	Increase.	Decrease.
	Rs. a. p.	Rs. a. p.	Rs. a. p.	Rs. a. p.
<i>Salaries.</i>				
Paid by Local authorities.	20,687 9 0	19,165 5 0	..	1,522 4 0
Paid by companies, other public bodies and Associations.	60,201 1 0	50,550 5 0	..	9,650 12 0
Paid by private employers under and agreement with the Collector.	14,596 11 0	12,630 4 0	..	1,966 7 0
Income derived from house property.	21,976 11 0	13,095 3 0	..	8,881 8 0
Income derived from business.	1,85,733 1 0	1,39,456 5 0	..	46,276 12 0
Professional earnings	1,938 11 0	1,541 11 0	..	397 0 0
Surcharge	53,114 11 0	39,478 14 0	..	12,635 13 0
<i>Income derived from other sources, salaries not included in items Nos. 1 to 4.</i>	..	..	..	..
Other sources	9,611 14 0	7,468 8 0	..	2,143 6 0
Super-tax including surcharge.	1,26,085 6 0	45,343 15 0	..	80,741 7 0
On Securities on Government of India.	3,073 7 0	2,538 2 0	..	535 5 0
On pensions	244 2 0	196 2 0	..	48 0 0
Surcharge on pension and salaries.	192 5 0	4,473 0 3	4,280 11 3	..
Other arrears of previous year.	17,605 1 0	6,310 1 0	..	11,295 0 0
Surcharge on arrears.	..	1,037 0 0	1,037 0 0	..
<i>Penalties.</i>				
Recoveries of Income-tax on salaries, paid by Government.	21,686 0 0	20,864 9 9	..	821 6 3
Penal recoveries under section 36 (I) (only amounts recovered as penalty to be shown).	117 8 0	156 8 0	39 0 0	..

'Administration Report of Aden for the year ending 31 March 1934' [23v] (45/106)

APPENDIX VII—*contd.*

Comparative statement of receipts and charges on account of Income-tax during the years 1932-33 and 1933-34—*contd.*

	1932-33.			1933-34.			Increase.			Decrease.		
	Rs.	a.	p.	Rs.	a.	p.	Rs.	a.	p.	Rs.	a.	p.
<i>Penalties—contd.</i>												
Refund of passage money drawn in excess.	..			87	0	0	87	0	0	..		
Other penalties and fines.	..									..		
<i>Perim.</i>												
Recoveries from salaries paid by Companies, section 9(2).	..									..		
Excess War Profit Duty.	..									..		
Total	5,36,864	2	0	3,64,392	13	0	5,443	11	3	1,77,915	0	3
<i>Aden.</i>												
Charges—												
Establishment	12,189	7	0	13,745	8	0	1,556	1	0	..		
Passage to establishment.	..			485	9	0	485	9	0	..		
2 per cent. Commission on collection.	..			..			..			..		
Contingencies	781	1	0	719	14	0	..			61	3	0
<i>Perim.</i>												
2 per cent. commission for collection.	..			..			..			..		
Total	12,970	8	0	14,950	15	0	2,041	10	0	61	3	0

H. M.'s Treasury Office,  
Aden ;  
The 9th June 1934.

A. F. FERRAM,  
Treasury Officer, Aden.

Comparative at the T  
Non-Judicial s  
papers.  
Adhesive Forei  
stamps.  
Hundi stamps  
Adhesive S  
stamps.  
Adhesive N  
stamps.  
Adhesive Cou  
stamps.  
Insurance  
stamps.  
Total  
H. M.'s Tre  
Aden  
The 9th J

(24)

APPENDIX VII.

Comparative statement showing the value of General and Court Fee Stamps sold at the Treasury Office, Aden, during the financial years 1932-33 and 1933-34.

Description	1932-33.		1933-34.		Increase.		Decrease.	
	Rs.	a. p.	Rs.	a. p.	Rs.	a. p.	Rs.	a. p.
Non-Judicial stamped papers.	7,238	0 0	6,977	0 0	..	..	261	0 0
Adhesive Foreign Bill stamps.	15,614	0 0	15,260	0 0	..	..	354	0 0
Hundi stamps . . .	..	..	..	..	..	..	..	..
Adhesive Special stamps.	27,935	7 0	20,534	14 0	..	..	7,400	9 0
Adhesive Notarial stamps.	2,081	0 0	1,600	0 0	..	..	481	0 0
Adhesive Court Fee stamps.	35,621	0 0	26,436	12 0	..	..	9,184	4 0
Insurance Policy stamps.	428	0 0	568	0 0	140	0 0	..	..
<b>Total Rs.</b>	<b>88,917</b>	<b>7 0</b>	<b>71,376</b>	<b>10 0</b>	<b>140</b>	<b>0 0</b>	<b>17,680</b>	<b>13 0</b>

H. M.'s Treasury Office,  
Aden ;  
The 9th June 1934.

A. F. FERRAM,  
Treasury Officer, Aden.

FERRAM,  
Officer, Aden



APPENDIX VIII-A.

Comparative statement of receipts and payments on account of Government Residency Schools during the years 1932-33 and 1933-34.

	1932-33.	1933-34.	Increase.	Decrease.
	Rs. a. p.	Rs. a. p.	Rs. a. p.	Rs. a. p.
<i>Receipts.</i>				
Secondary . . . . .	1,791 12 0	1,689 12 0	..	102 0 0
Primary school fees . . . . .	380 7 0	322 10 0	..	57 13 0
Contribution from the Aden Settlement and Aden Port Trust towards primary Schools . . . . .	15,000 0 0	17,392 8 0	2,392 8 0	..
Commercial Class fee . . . . .	473 8 0	382 8 0	..	91 0 0
<b>Total Rupees . . . . .</b>	<b>17,645 11 0</b>	<b>20,007 15 0</b>	<b>2,613 1 0</b>	<b>250 13 0</b>
<i>Charges.</i>				
English teaching and primary schools establishment . . . . .	23,834 5 0	25,959 5 0	2,125 0 0	..
Charges on account of salaries, etc., of Dy. Educational Inspector . . . . .	5,049 13 0	5,471 14 0	422 1 0	..
Contingencies and book purchase . . . . .	4,644 14 0	6,208 14 0	1,564 0 0	..
Grant-in-aid to private schools . . . . .	21,297 0 0	19,286 0 0	..	2,011 0 0
Salary, etc., of estts. of the Dy. Educational Inspector . . . . .	1,350 0 0	2,291 8 0	941 8 0	..
T. A. to Resy. schools estt. . . . .	1,472 4 0	3,071 7 0	1,599 3 0	..
<b>Total Rupees . . . . .</b>	<b>57,648 4 0</b>	<b>62,289 0 0</b>	<b>6,651 12 0</b>	<b>2,011 0 0</b>

H. M.'s Treasury Office, }  
Aden ; }  
The 9th June 1934. }

A. F. FERRAM,  
Treasury Officer, Aden.

25

APPENDIX

Statement showing the number of crimes committed and number

f Government  
4.

Decrease.
Rs. a. p.
102 0 0
57 13 0
0 ..
0 ..
91 0 0
250 13 0
0 ..
0 ..
2,011 0 0
0 ..
2,011 0 0

1	2	Description of offence.	No. of offences.		5	6	7	8	9
			10	11					
147	1	Blotting	40	40	30	116	101	88	11
148	1	Army	40	40	30	116	101	88	11
149	1	CHAPTER VII.							
150	1	CHAPTER VIII.							
151	1	CHAPTER X.							
152	1	Making false report	3	3	3	3	3	3	3
153	1	CHAPTER XI.							
154	1	Giving false evidence	1	1	1	1	1	1	1
155	1	CHAPTER XVI.							
156	1	V.C. Hunt	33	33	33	33	33	33	33
157	1	Graveyard Hunt by night	7	7	7	7	7	7	7
158	1	Assaulting public servant	7	7	7	7	7	7	7
159	1	Causing death by rash and negligent Act.	6	6	6	6	6	6	6
160	1	Voluntarily Causing Grievous Hurt.	23	23	23	23	23	23	23
161	1	Causing Hurt by Dangerous weapon.	7	7	7	7	7	7	7
162	1	Assault	44	44	44	44	44	44	44

APPENDIX IX.

RRAM,  
Officer, Aden.

APPENDIX

Statement showing the number of crimes committed and number

Section.	Description of offence.	No. of offences.		Number of cases disposed of during present year.	Number of persons apprehended.	Number of persons convicted.	Number of persons sentenced to fine only.
		Committed during the present year.	Total.				
1	2	3	4	5	6	7	8
	CHAPTER VII.						
147	Rioting . . . . .	..	..	..	..	..	..
	CHAPTER VIII.						
160	Affray . . . . .	40	40	40	118	101	98
	CHAPTER X.						
182	Making False report . . . . .	3	3	3	3	1	..
	CHAPTER XI.						
193	Giving False evidence . . . . .	1	1	1	1	1	1
	CHAPTER XVI.						
323	V. C. Hurt . . . . .	88	88	88	121	87	11
338	Grievous Hurt by rashat . . . . .	7	7	7	7	1	..
353	Assaulting public servant . . . . .	7	7	7	7	6	2
304 A	Causing death by rash and negligent Act.	6	6	6	8	5	..
325	Voluntarily Causing Grievous Hurt.	23	23	23	24	21	2
324	Causing Hurt by Dangerous weapon.	7	7	7	7	5	..
352	Assault . . . . .	44	44	44	77	7	6

(26)

IX.

of cases disposed of during the year 1933-34.

Whipping.	Number of persons acquitted or discharged.	Under one month.	From one to two months.	From two to three months.	From three to six months.	From six to twelve months.	From one to two years.
..	..	..	..	..	..	..	..
2	17	..	1	..	..	..	..
..	2	..	1	..	..	..	..
..	..	..	..	..	..	..	..
..	34	1	69	2	3	1	..
..	6	..	1	..	..	..	..
..	1	..	3	1	..	..	..
..	3	..	2	..	..	2	1
..	3	4	8	6	..	1	..
1	2	1	1	1	..	1	..
..	70	1	..	..	..	..	..

'Administration Report of Aden for the year ending 31 March 1934' [27r] (50/106)

		APPENDIX						IX—contd.								
		Statement showing the number of crimes committed and number								of cases disposed of during the year 1933-34—contd.						
Section.	Description of offence.	No. of offences.		Number of cases disposed of during present year.	Number of persons apprehended.	Number of persons convicted.	Number of persons sentenced to fine only.	Whipping.	Number of persons acquitted or discharged.	Under one month.	From one to two months.	From two to three months.	From three to six months.	From six to twelve months.	From one to two years.	
		Committed during the present year.	Total.													
1	2	3	4	5	6	7	8	9	10	11	12	13	14	15	16	
CHAPTER XVI—contd.																
363	Kidnapping . . . .	1	1	1	4	..	..	..	4	..	..	..	..	..	..	
309	Attempt to commit suicide .	2	2	2	2	1	..	..	1	..	1	..	..	..	..	
341	Wrongfull restraining any person.	..	..	..	..	..	..	..	..	..	..	..	..	..	..	
318	Concealment of birth secret disposal of dead body.	..	..	..	..	..	..	..	..	..	..	..	..	..	..	
CHAPTER XVII.																
380	Theft in a building . . .	38	38	38	47	39	..	5	8	..	10	16	5	..	3	
381	Theft by Servant . . .	2	2	2	2	2	..	..	..	..	1	..	1	..	..	
406	Cr. Breach of Trust . . .	8	8	8	8	2	..	..	6	..	2	..	..	..	..	
420	Cheating . . . . .	11	11	11	14	6	..	..	8	2	3	1	..	..	..	
377	Unnatural Offences . . .	1	1	1	4	1	..	1	3	..	..	..	..	..	..	
448	Cr. House Trespass . . .	8	8	8	16	3	3	..	13	..	..	..	..	..	..	

APPENDIX

Statement showing the number of crimes committed and number

Section.	Description of offence.	No. of offences.		Number of cases disposed of during present year.	Number of persons apprehended.	Number of persons convicted.	Number of persons sentenced to fine only.
		Committed during the present year.	Total.				
1	2	3	4	5	6	7	8
CHAPTER XVII— <i>contd.</i>							
408	Cr. Breach of Trust by servant or clerk,	11	11	11	11	2	..
411	Being in possession of stolen property.	13	13	13	18	12	..
451	House Trespass to commit offence,	6	6	6	6	6	..
419	Cheating by personation .	..	..	..	..	..	..
379	Theft . . . . .	13	13	13	15	14	..
409	Breach of Trust by public servant.	..	..	..	..	..	..
CHAPTER XIX.							
500	Defamation . . . . .	13	13	13	13	4	4
CHAPTER XX.							
498	Enticing away married women.	2	2	2	2	..	..

IX—*contd.*

of cases disposed of during the year 1933-34—*contd.*

Whipping.	Number of persons acquitted or discharged.	Under one month.	From one to two months.	From two to three months.	From three to six months.	From six to twelve months.	From one to two years.
9	10	11	12	13	14	15	16
..	9	1	..	1	..	..	..
6	6	..	4	..	1	..	..
..	..	..	2	3	..	..	1
..	..	..	..	..	..	..	..
1	1	..	1	7	2	1	2
..	..	..	..	..	..	..	..
..	9	..	..	..	..	..	..
..	2	..	..	..	..	..	..

28

'Administration Report of Aden for the year ending 31 March 1934' [29r] (52/106)

52

APPENDIX

Statement showing the number of crimes committed and number

Section.	Description of offence.	No. of offences.		Number of cases disposed of during present year.	Number of persons apprehended.	Number of persons convicted.	Number of persons sentenced to fine only.
		Committed during the present year.	Total.				
1	2	3	4	5	6	7	8
CHAPTER XXII.							
504	Insult . . . . .	91	91	91	138	14	14
OTHER OFFENCES.							
	Indian Arms Act . . . . .	7	7	7	7	7	4
	S. P. C. Act . . . . .	27	27	27	30	28	28
	B. D. P. Act . . . . .	369	369	369	549	465	463
	A. S. Rules . . . . .	223	223	223	246	221	221
	Cr. P. Code* . . . . .	6	6	6	6	3	..
	Merchant Shipping Act . . . . .	4	4	4	4	4	1
	A. P. Rules . . . . .	9	9	9	20	16	16
	I. M. V. Act . . . . .	479	479	479	509	399	353
	Total . . . . .	1,570	1,570	1,570	2,044	1,484	1,228

\*55 ordered to pay Maintenance.

Aden;  
The 13th June 1934.

53

IX--concl.

of cases disposed of during the year 1933-34--concl.

Whipping.	Number of persons acquitted or discharged.	Under one month.	From one to two months.	From two to three months.	From three to six months.	From six to twelve months.	From one to two years.	Licenses suspended.	Bound over.
9	10	11	12	13	14	15	16	17	8
..	124	..	..	..	..	..	..	..	1
..	..	..	1	1	1	..	..	..	..
..	2	..	..	..	..	..	..	..	..
..	84	..	1	1	..	..	..	..	..
..	25	..	..	..	..	..	..	..	..
..	3	..	..	..	..	..	..	..	3
..	..	2	1	..	..	..	..	..	1
..	4	..	..	..	..	..	..	..	..
..	110	..	..	..	..	..	..	46	..
16	560	12	113	40	13	6	7	46	3

E. WESTON,  
District and Sessions Judge, Aden.

29

APPENDIX X.

Statement showing the number of offences reported and dealt with by various Courts at Aden and Perim during the year 1933-34.

Name of Courts.	No. of offences reported during.			No. of persons.							Persons disposed of.			
	2 Past year.	3 Present year.	4 Remaining at the end of last year.	Brought to trial in 1933.				Total.		12 Discharged warrant trial.	13 Acquitted.	14 Convicted.	15 Committed or referred.	
				5 Arrested by Police.	6 Upon warrant.	7 On summons.	8 Voluntary.	9 Arrested in the presence of Magistrate.	10 Past year.					11 Present year.
District Court of Aden . . . . .	1,843	1,570	Nil	293	83	1,668	..	2,685	2,044	..	560	1,480	4	
Perim Court . . . . .	32	51	..	51	..	..	..	32	51	..	12	39	..	
<b>Total . . . . .</b>	<b>1,875</b>	<b>1,621</b>	<b>..</b>	<b>344</b>	<b>83</b>	<b>1,668</b>	<b>..</b>	<b>2,717</b>	<b>2,095</b>	<b>..</b>	<b>572</b>	<b>1,519</b>	<b>4</b>	

Aden,  
The 13th June 1934.

E. WESTON,  
District and Sessions Judge, Aden.

The  
against de  
was 43.  
case the fi  
against on

Opening  
Filed dr  
Total  
Disposec  
Closing  
Suits fil

The 13th

Civil wor

30

APPENDIX XI.

The number of applications received in the District Court, Aden, against decisions passed by the Aden Criminal Courts during the year 1933-34, was 43. Sentences against 45 persons in 40 cases were confirmed and in one case the fine was reduced and in 1 the sentence was set aside. Proceedings against one person in one case were quashed.

E. WESTON,

District and Sessions Judge, Aden.

Aden ;  
The 13th June 1934.

APPENDIX XII.

Civil work and Nature and Value of original suits filed during the year 1933, in the District Court, Aden.

	Past year.	Present year.
Opening Balance . . . . .	34	43
Filed during the year . . . . .	2,368	2,268
Total . . . . .	2,402	2,311
Disposed of during the year . . . . .	2,359	2,281
Closing balance . . . . .	43	30

Suits filed during the present year :—

Value Rs. 3,32,575.

Suits <i>re</i> landed property . . . . .	154
Suits for other rights . . . . .	105
Number of suits under Rs. 100 . . . . .	1,682
Number of suits above Rs. 100 and under Rs. 500 . . . . .	275
Number of suits above Rs. 500 and under Rs. 1,000 . . . . .	14
Number of suits above Rs. 1,000 and under Rs. 5,000 . . . . .	28
Number of suits above Rs. 5,000 . . . . .	10

Suits disposed of during the present year :—

Ex parte . . . . .	550
Adjusted and compounded . . . . .	623
Otherwise disposed of . . . . .	1,108
Value Rs. 3,62,680.	

There remain 30 suits pending at the close of the year valued at Rs. 5,15,907 of which 13 valued at Rs. 4,78,114 are either in reference with the High Court or stayed pending orders of the High Court.

E. WESTON,

District and Sessions Judge, Aden.

Aden ;  
The 13th June 1934.

39	12	572	1,619
51	2,095		
32	2,717		
53	1,668		
344			
1,621			
1,875			
Total			



APPENDIX XIII.

*Results of Application for Execution of Decrees in the District Court, Aden.*

Opening balance, present year—*Nil*.

Execution application filed in District Court, Aden :—

Past year—1,320.

Present year—1,217.

Value for present year—3,51,493-9-1.

Disposed of—

Past year—1,320.

Present year—1,217.

E. WESTON,

District and Sessions Judge, Aden.

Aden ;

The 13th June 1934.

APPENDIX XIV.

*Number of Results of appeals in Civil Suits in the District Court, Aden.*

Filed during the year—3.

Total present year—3.

Disposed of during present year—3.

Value of appeals during present year—Rs. 672-0-0.

How disposed of :—

Decision confirmed—2.

Dismissed for failure to pay deficit stamp—1.

Results of Revision Applications filed during the year 1933-34.

Filed during the year—49.

Total—49.

Disposed of during year—49.

How disposed of :—

Decisions confirmed—43.

Remanded—4.

Set aside—2.

E. WESTON,

District and Sessions Judge, Aden.

Aden ;

The 13th June 1934.

APPENDIX XV.  
CRIMINAL JUSTICES.  
Cases disposed of by the following Judicial Officers during year 1933-34.

APPENDIX XV.  
CRIMINAL JUSTICE.

Statement of Criminal Cases tried and sentences passed by the following Judicial Officers during year 1933-34.

Name of Judicial Officers.	Number of trials.	Number of offenders.	Fines. Whipping.	Under one month.	From 1 to 2 months.	From 2 to 3 months.	From 3 to 6 months.	From 6 to 12 months.	From 1 to 2 years.	Bound over.	Licence suspended.	Trial number of offenders acquitted.
M. Y. Khan, Esq.	1,136	1,521	879 14	10	87	31	4	3	7	3	46	437
Captain H. V. Rose	24	30	13 1	..	..	1	2	..	..	..	..	13
A. F. Ferram, Esq.	410	493	336 1	2	26	8	7	3	..	..	..	110
	1,570	2,044	1,228 16	12	113	40	13	6	7	3	46	560

E. WESTON,  
District and Sessions Judge, Aden.

Aden ;  
The 13th June 1934.

(31)

APPENDIX XVI.

Statement showing the strength of the Force employed in Aden, Perim, Kamaran and Shaikh Othman, during the year 1933-34.

Num-ber.	Designation.	Rate of pay.		Total per mensem.		Remarks.
		Rs. a. p.	Rs. a. p.	Rs. a. p.	Rs. a. p.	
<i>Aden Land and Shaikh Othman Foot Police</i>						
1	Police Prosecutor . . . . .	160	0 0	160	0 0	Government of India letter No. F. 193/N./30, dated the 9th August 1930 in the Foreign and Political Department.
1	Inspector . . . . .	290	0 0	290	0 0	
1	Inspector . . . . .	250	0 0	250	0 0	
2	Inspectors . . . . .	120	0 0	240	0 0	
1	Inspector (vacant) . . . . .	120	0 0	120	0 0	
2	Jamadars . . . . .	60	0 0	120	0 0	
5	Head constables, 1st Class including 1 vacant post.	45	0 0	225	0 0	
8	Head constables, II Class . . . . .	40	0 0	320	0 0	
12	Head constables, III Class . . . . .	35	0 0	420	0 0	
84	Constables on Rs. 32 . . . . .	32	0 0	2,688	0 0	
81	Constables on Rs. 30 . . . . .	30	0 0	2,430	0 0	
34	Constables on Rs. 27 . . . . .	27	0 0	918	0 0	
1	Head Clerk . . . . .	200	0 0	200	0 0	
1	Accountant . . . . .	150	0 0	150	0 0	
1	Clerk . . . . .	100	0 0	100	0 0	
1	Clerk* . . . . .	90	0 0	90	0 0	*Bombay G. R. H. D. No. 7030, dated 14th February 1931.
2	Clerks . . . . .	80	0 0	160	0 0	
4	Clerks . . . . .	59	0 0	236	0 0	
1	Clerk . . . . .	56	0 0	56	0 0	
1	Clerk . . . . .	50	0 0	50	0 0	
Total . . . . .		..		9,223 0 0		
<i>Aden Harbour Police.</i>						
2	Inspectors . . . . .	250	0 0	500	0 0	Government of India letter No. F. 193/N./30, dated the 9th August 1930 in the Foreign and Political Department.
1	Inspector . . . . .	120	0 0	120	0 0	
1	Inspector (vacant) . . . . .	120	0 0	120	0 0	
1	Jamadar . . . . .	110	0 0	110	0 0	

32

APPENDIX XVI—contd.

Number.	Designation.	Rate of pay.	Total per mensem.	Remarks.
<i>Aden Harbour Police—(contd.)</i>		Rs. a. p.	Rs. a. p.	
3	Head Constables, II Class	40 0 0	120 0 0	
3	Head constables, III Class.	35 0 0	105 0 0	
23	Constables on Rs. 32	32 0 0	736 0 0	
22	Constables on Rs. 30	30 0 0	660 0 0	
6	Constables on Rs. 27.	27 0 0	162 0 0	
1	Clerk	80 0 0	80 0 0	
	Total	..	2,713 0 0	
<i>Perim Land Police.</i>				
1	Head constables, II Class	40 0 0	40 0 0	Government of India letter No. F. 193/N./30, dated the 9th August 1930 in the Foreign and Political Department.
	Local allowances at Rs. 10 and Rs. 5	15 0 0	15 0 0	
5	Constables on Rs. 32	32 0 0	160 0 0	
7	Constables on Rs. 30	30 0 0	210 0 0	
	Local allowances to 12 constables at Rs. 5 each per mensem.	5 0 0	60 0 0	
	Total	..	485 0 0	
<i>Perim Harbour Police.</i>				
1	Constable	30 0 0	30 0 0	
6	Constables on Rs. 27	27 0 0	162 0 0	
	Total	..	192 0 0	
<i>Shuikh Othman Mounted Police.</i>				
1	Jamadar	93 0 0	93 0 0	
2	Head constables, III Class	70 0 0	140 0 0	
6	Constables on Rs. 67 p.m.*	67 0 0	402 0 0	
3	Constables on Rs. 65 p.m.*	65 0 0	195 0 0	
1	Constable, Reserve	27 0 0	27 0 0	
	Total	..	857 0 0	
<i>Aden Armed Police Permanent Force.</i>				
1	Senior Inspector	180 0 0	180 0 0	
1	Inspector	170 0 0	170 0 0	
1	Inspector	150 0 0	150 0 0	

\*Includes Rs. 35 camel allowance.

erim, Kalla

Remarks.

Government of India letter No. F. 193/N./30, dated the 9th August 1930 in the Foreign and Political Department.

\*Bombay G. H. D. No. 70 dated 14th February 1931.

Government of India letter No. F. 193/N./30, dated the 9th August 1930 in the Foreign and Political Department.

APPENDIX XVI—concl'd.

Nu- ber.	Designation.	Rate of pay.		Total per mensem.		Remarks.
		Rs.	a. p.	Rs.	a. p.	
<i>Aden Armed Police Permanent Force— contd.</i>						
1	Inspector	140	0 0	140	0 0	
8	Head constables, I Class	45	0 0	360	0 0	
12	Head constables, II Class	40	0 0	480	0 0	
12	Head constables, 3rd Class	35	0 0	420	0 0	
6	Constables on Rs. 32	32	0 0	192	0 0	
74	Constables on Rs. 30	30	0 0	2,220	0 0	
88	Constables on Rs. 27	27	0 0	2,376	0 0	
1	Clerk	60	0 0	60	0 0	
<i>Island allowance to 1 Inspector and 30 Head Constables and Constables at Perim.</i>						
1	Inspector	25	0 0	25	0 0	
5	Head Constables	7	8 0	37	8 0	
25	Constables	5	0 0	125	0 0	
<i>Islands allowance to 1 Inspector and 30 Head Constables and Constables at Kamaran.</i>						
1	Inspector.	25	0 0	25	0 0	
5	Head Constables	7	8 0	37	8 0	
25	Constables	5	0 0	125	0 0	
		Total		7,123 0 0		
<i>Temporary Establishment, Aden Land Police.</i>						
1	European Inspector	240	0 0	240	0 0	
	Abdulla Khan Fateh Din	220	0 0	220	0 0	

Aden ;  
The 12th June 1934.

J. M. GREEN,  
Commandant of Police, Aden.

APPENDIX XVII.  
Statement showing the working of the Police during the year 1933-34.

Number of

Percentage

APPENDIX XVII.

Statement showing the working of the Police during the year 1933-34.

Police Stations.	Number of offences.		Number of accused arrested.		Number of accused sent up for trial.		Number of accused convicted.		Number of accused acquitted or discharged.		Percentage of conviction of accused sent up for trial.	
	Past year.	Present year.	Past year.	Present year.	Past year.	Present year.	Past year.	Present year.	Past year.	Present year.	Past year.	Present year.
1	2	3	4	5	6	7	8	9	10	11	12	13
Harbour	15	11	12	18	9	8	7	6	2	2	..	..
Tawahi	91	152	125	48	108	41	50	27	57	14	..	..
Maala	35	24	43	23	42	19	25	14	17	5	..	..
Crater	76	78	125	77	110	67	63	52	47	15	..	..
Shaikh Othman	23	62	31	58	23	48	19	35	4	8	..	..
Total	240	227	336	224	292	183	164	134	127	44	50.16	73.22

Aden; The 12th June 1934. J. M. GREEN, Commandant of Police, Aden.

33

APPENDIX XVIII.

Statement showing the value of property stolen and recovered during the year 1933-34.

Police Stations.	Amount stolen.		Amount recovered.		Percentage of recoveries of stolen property.	
	Past year.	Present year.	Past year.	Present year.	Past year.	Present year.
	Rs. a. p.	Rs. a. p.	Rs. a. p.	Rs. a. p.	6	7
1		3		5		
Harbour	405 11 0	2,493 0 0	118 6 0	42 0 0	..	..
Tawahi	1,981 9 0	4,462 11 0	625 2 8	1,390 11 6	..	..
Maala	748 10 0	1,381 11 3	251 7 0	601 3 0	..	..
Crater	11,627 12 9	4,216 11 0	562 12 3	2,359 8 0	..	..
Shaikh Othman	837 5 5	2,229 7 0	357 1 5	346 6 0	..	..
Total	15,601 0 2	14,783 8 9	1,914 13 4	4,739 12 6	12.27	32.06

Aden;  
The 12th June 1934.  
J. M. GREEN,  
Commandant of Police, Aden.

Statement  
Number of  
Re  
Ad  
La  
Cu  
Daily ave  
La  
Cu  
No. of pr  
Average  
Total cos

34

APPENDIX XIX.

Statement showing the number of prisoners confined in the Aden District Prison during the year 1933-34.

Number of Prisoners :—	M.	F.
Remaining from last year . . . . .	48	0
Admitted during the year . . . . .	429	6
Last year . . . . .	438	6
Current year . . . . .	477	6
Daily average :—		
Last year . . . . .	67	0
Current year . . . . .	57	0
No. of prisoners remaining at the end of the year . . . . .	58	0
Average number of undertrial prisoners in jail . . . . .	5	0
Total cost of jail and prisoners Rs. 16,902-14-8.		

D. D. VARIAVA,  
Superintendent, Aden District Prison.

Total 15,601 0 2 14,783 8 9 1,914 13 4 4,739 12 6 12-27 32-06  
Aden:  
The 12th June 1934.  
J. M. GREEN,  
Commissioner of Prisons.



APPENDIX XX.

LEPER HOSPITAL.

Statement showing the receipt and expenditure of the Leper Asylum Hospital, Shaikh Othman, Aden, for 1933-34.

	Receipt.		Expenditure.	
	Rs.	A. P.	Rs.	A. P.
1. Government Grant	.	.	.	.
2. Settlement Grant	.	.	.	.
3. Repairs Grant	.	.	.	.
	3,000	0 0	2,383	0 0
	1,200	0 0	1,122	0 0
	300	0 0	160	0 0
			180	0 0
			1,600	0 0
			5,395	0 0
Total	4,500	0 0		

64

The deficit as well as all expenses on dressings and ordinary drugs (say Rs. 800) is paid for by the Church of Scotland Mission. Medical and Nursing Services are also provided by the Mission as well as general administration.

Shaikh Othman;

The 9th August 1934.

P. W. R. PETRIE,  
Superin ten

APPENDIX XXI.

Statement showing the working of His Highness the Sultan's Dispensary at Lahej for the year ending 31st March 1934.

APPENDIX XXI.

Statement showing the working of His Highness the Sultan's Dispensary at Lahej for the year ending 31st March 1934.

Dispensary building.	By whom maintained.	Date of opening the Dispensary.	Establishment.	No. of out-patients treated 1933-34.	Daily average of out-patients.	Classification of out-door patients.	No. of out-door operations performed during 1933-34.
Dispensary building is well equipped.	By His Highness the Sultan of Lahej.	16-2-32.	1 Medical Officer. 1 Compounder. 1 Dresser. 1 Sweeper. 1 Ayah (died on 8-8-33.)	12,808	163.5	Yemen British Protectorate Lahej State 12,476	445

HASHMATRAI,

Medical Officer-in-Charge,  
Lahej Dispensary.

Dated Lahej, 6th May 1934.

35

APPENDIX XXI-A.

Statement showing the income and expenditure of His Highness the Sultan's Dispensary at Lahej for the year ending 31st March 1934.

	Rs. A. P.	Expenditure.	Rs. A. P.
<b>Income.</b>			
Half the amount of private practice including medicines charges . . . . .	812 12 0	Medical Officer's pay . . . . .	2,429 9 0
The total income of the Dispensary including Medical Officer's shares . . . . .	1,430 0 0	Pay of Establishment . . . . .	1,235 7 0
		Contingencies . . . . .	252 11 6

	Rs. A. P.	Expenditure.	Rs. A. P.
Medicine from Government Medical Store Depot, Bombay, is Rs. 721-5-0.			
	3,917 11 6		

HASHMATRAI,  
Medical Officer-in-Charge,  
Lahej Dispensary.

Dated Lahej, 6th May 1934.

Primary Vacc  
Re-vaccinatio

36

APPENDIX XXII.

Vaccinations.	Years.		
	1931-32.	1932-33.	1933-34.
Primary Vaccinations . . . . .	15,493	15,223	14,665
Re-vaccinations . . . . .	1,874	1,903	1,978

N. M. HODIWALA,  
Medical Officer of Health,  
Aden Settlement.

N. M. HODIWALA,  
Medical Officer of Health,  
Aden Settlement.

APPENDIX XXIII.

No.	Year.	Births.	Birth rate.	Deaths.	Death rate.	Excess of births over deaths.	Excess of deaths over births.
1	1923-24	921	20·62	1,021	22·86	..	100
2	1924-25	876	19·61	1,318	29·51	..	442
3	1925-26	771	17·26	1,315	29·45	..	544
4	1926-27	725	16·23	1,264	28·30	..	539
5	1927-28	736	16·48	2,083	46·65	..	1,347
6	1928-29	609	13·63	2,076	46·49	..	1,467
7	1929-30	896	20·06	2,034	45·55	..	1,138
8	1930-31	1,135	25·29	1,374	30·63	..	239
9	1931-32	1,386	30·13	1,284	27·91	102	..
10	1932-33	1,621	35·24	1,154	24·22	467	..
11	1933-34	1,551	33·72	1,204	26·17	347	..

N. M. HODIWALA,  
Medical Officer of Health,  
Aden Settlement.

April  
May  
June  
July  
August  
Septemb  
October  
Novemb  
Decemb  
Januar  
Februa  
March

(37)

APPENDIX XXIV.

Months.	Births.	Deaths.	Triennial average No. of deaths.
April . . . . .	118	83	108
May . . . . .	121	95	95
June . . . . .	112	77	101
July . . . . .	114	88	100
August . . . . .	146	107	110
September . . . . .	143	97	110
October . . . . .	130	100	110
November . . . . .	151	115	100
December . . . . .	192	122	116
January . . . . .	143	118	113
February . . . . .	100	98	108
March . . . . .	81	104	102
Total . . . . .	1,551	1,204	1,273

Excess of births over deaths.	Excess of deaths over births.
..	100
..	442
..	544
..	589
..	1,347
..	1,467
..	1,138
..	239
102	..
487	..
347	..

LA,  
Health,  
Aden Settlement.

N. M. HODIWALA,  
Medical Officer of Health,  
Aden Settlement.

APPENDIX XXV.

Causes.	Years.		
	1931-32.	1932-33.	1933-34.
1. Still and Premature birth . . . . .	98	147	116
2. Small-Pox . . . . .	..	2*	1*
3. Malaria . . . . .	24	16	10
4. Influenza . . . . .	2	..	..
5. Other Fevers . . . . .	96	56	59
6. Respiratory Diseases . . . . .	398	399	448
7. Dysentery . . . . .	31	29	20
8. Diarrhoea . . . . .	149	136	180
9. Injuries . . . . .	10	6	7
10. Deaths from Child Births . . . . .	15	9	19
11. All Other Causes . . . . .	461	362	344
Total . . . . .	1,284	1,162	1,204

\* In imported cases from outside Aden.

N. M. HODIWALA,  
Medical Officer of Health,  
Aden Settlement.

April .  
May .  
June .  
July .  
August  
Septemb  
October  
Novemb  
Decembe  
January  
Februar  
March

38

APPENDIX XXVI.

Years.		Months.	Deaths from Respiratory Diseases.	
			1932-33.	1933-34.
147	116	April . . . . .	31	27
2*	1*	May . . . . .	33	38
16	10	June . . . . .	32	29
..	..	July . . . . .	25	30
56	59	August . . . . .	27	38
399	448	September . . . . .	29	27
29	20	October . . . . .	32	31
136	180	November . . . . .	31	34
6	7	December . . . . .	35	49
9	19	January . . . . .	38	60
362	344	February . . . . .	51	37
1,162	1,204	March . . . . .	35	48
		Total . . . . .	399	448

N. M. HODIWALA,  
Medical Officer of Health,  
Aden Settlement.

N. M. HODIWALA,  
Medical Officer of Health,  
Aden Settlement.



APPENDIX XXVII.

Statement of "Local" and "Imported" cases of Malaria treated at the various medical institutions in the Aden Settlement during the year 1933-34

Months.	Fortress.		Shaikh Othman.		Remarks.
	Local.	Imported.	Local.	Imported.	
April 1933 .	..	90*	..	4	*These figures were given prior to the introduction of the new fortnightly return form.
May ,, .	..	76*	..	4	
June ,, .	..	29	3	..	
July ,, .	1	48	2	8	
August ,, .	..	64	..	17	
September ,, .	..	19	..	6	
October ,, .	2	29	1	7	
November ,, .	..	70	..	5	
December ,, .	..	117	..	14	
January 1934 .	..	92	..	9	
February ,, .	1	75	..	8	
March ,, .	..	62	..	3	
Total .	4†	771	6†	85	†All these 10 cases were diagnosed clinically and were not confirmed by microscopic examination of the blood.

N. M. HODIWALA,  
Medical Officer of Health,  
Aden Settlement.

39

APPENDIX XXVIII.

Vital Statistics of the Settlement of Aden for the year 1933-34.

Aden District.

Population—45,992.

Births :—

Past year—1,621.

Present year—1,551.

Decrease—70.

Deaths :—

Past year—1,154.

Present year—1,204.

Increase—50.

Ratio per 1,000 Population :—

Birth rate Past year—35·24.

Birth rate Present year—33·72.

Death rate Past year—24·22.

Death rate present year—26·17.

N. M. HODIWALA,  
Medical Officer of Health,  
Aden Settlement.

treated at the  
during the year

Remarks.

se figures were  
ten prior to the  
roduction of the  
w fortnightly  
urn form.

these 10 cases were  
posed clinically  
were not confirm-  
by microscopic  
ination of the  
l.

DIWALA,  
er of Health,  
n Settlement.

APPENDIX XXIX.

Statistical Return of all kinds of schools in the Aden Settlement for the year 1933-34.

Name of Institution.	No. of Institution.		No. of Scholars.		Average monthly number.	Average daily attendance.	Expenditure.				Total.	Annual cost of educating each pupil in average attendance.	Cost to Government.		
	Males.	Females.	Total.	Imperial Revenue.			Municipal Fund.	Port Trust Fund.	Fees.	Subscriptions.				Endowment and other sources.	
<b>GOVERNMENT INSTITUTIONS.</b>															
<i>Secondary Schools.</i>															
Government A. V. School, Aden.	1	..	91	..	109	95	16,919	..	5,000	1,942	..	..	23,861	251 0 0 178 0 0	
<i>Primary Schools.</i>															
Government Primary School, Government.	1	..	91	..	109	95	16,919	..	5,000	1,942	..	..	23,861	251 0 0 178 0 0	
Government Primary School, Government.	1	..	139	..	151	125	1,178	2,500	..	157	..	..	3,835	31 0 0 9 0 0	
Government Primary School, Tawahi.	1	..	82	..	94	63	1,909	2,500	..	77	..	..	3,586	55 0 0 16 0 0	
Government Primary School, Sh. Othman.	1	..	75	..	86	62	782	2,500	..	74	..	..	3,356	54 0 0 13 0 0	
Government Primary School, Madia.	1	..	59	..	70	35	587	2,500	..	16	..	..	3,103	89 0 0 16 0 0	
	4		375		401	385	3,556	10,000	..	324	..	..	13,880	49 0 0 13 0 0	
<b>Aden Institutions for Males.</b>															
Marist Brother School.	1	..	129	..	128	108	2,675	..	..	3,591	..	..	6,294	116 0 0 25 0 0	
R. C. Mission School, Aden.	1	..	94	..	140	84	2,038	..	..	2,182	..	..	2,055	75 0 0 24 0 0	
Sir H. D. School, Aden.	1	..	61	..	49	45	1,560	..	..	1,688	64	..	893	82 0 0 33 0 0	
K. Falconer M. School.	1	..	21	..	22	20	400	..	..	240	..	..	4,300	4,840 247 0 0 20 0 0	
	4		305		299	257	6,613	..	..	7,701	64	..	13,442	27,920 109 0 0 26 0 0	
<b>Secondary Schools for Females.</b>															
Convent School, Crater-Orphanage School, Crater.	1	..	7	..	36	41	2,051	..	..	906	..	..	4,305	7,222 201 0 0 57 0 0	
Convent Orphanage School, Tawahi.	1	..	1	..	15	19	1,755	..	..	..	..	..	3,936	5,691 300 0 0 92 0 0	
	1	..	10	..	49	69	2,007	..	..	1,850	..	..	6,714	10,671 175 0 0 33 0 0	
	3		18		100	118	5,813	..	..	2,856	..	..	14,915	23,584 203 0 0 50 0 0	
<b>Aided Institutions for Males.</b>															
Madrasa Islamia, Crater.	1	..	145	..	172	151	1,300	..	..	..	1,532	..	..	2,832	21 0 0 9 0 0
Anjuman-i-Islam, Madia.	1	..	103	..	71	60	1,300	..	..	..	600	..	..	3,091	52 0 0 22 0 0
Sir H. C. D. School, Aden.	1	..	149	..	148	126	1,500	..	..	2,541	64	..	610	4,715	37 0 0 12 0 0
Indigenous Schools	6	..	199	..	154	177	653	..	..	..	..	..	1,793	2,446	14 0 0 4 0 0
	9		586		523	514	4,753	..	..	2,541	2,106	..	3,594	13,084	25 0 0 9 0 0

40



APPENDIX XXX.

ADEN DISTRICT.

Administration Report of the Civil Works, etc., for year 1933-34.

Particulars.	Expenditure.	Total.
	Rs.	Rs.
<i>41. Central—Civil.</i>		
1. Original Works, Major <i>Non-voted</i>	22,624	
2. " " Minor Voted	2,212	
3. " " " <i>Non-voted</i>	483	
4. Repairs Voted	62,912	
5. " <i>Non-voted</i>	10,991	99,222
<i>27 (1) Lighthouses and Lightships.</i>		
1. Repairs	997	997
<i>Telephone.</i>		
1. Repairs	220	220
<i>Post.</i>		
1. Repairs	2,405	2,405

J. V. ALEXANDER,  
M.Inst.C.E.,  
Chairman, Aden Port Trust.

APPENDIX XXXI.  
Abstract of receipts and expenditure of the Settlement Fund during the year 1933-34.

1932-33, actuals. | 1933-34, actuals. | 1934-35, estimated.

1933-34.

Total.

Rs.

99,222

997

230

2,466

DER,  
Inst. C.E.,  
Port Trust.

APPENDIX XXXI.

Abstract of receipts and expenditure of the Settlement Fund during the year 1933-34.

Receipts.	1932-33, actuals.	1933-34, actuals.	1934-35, estimated.	Expenditure.	1932-33, actuals.	1933-34, actuals.	1934-35, estimated.
	Rs.	Rs.	Rs.		Rs.	Rs.	Rs.
Opening balance on 1st April.				Expenditure during the year.			
In Revenue Account . . . . .	2,00,717	1,36,402	3,06,682	On Revenue Account . . . . .	7,60,576	7,51,150	7,95,712
In Capital Account . . . . .	1,80,131	3,80,369	4,34,208	On Capital Account . . . . .	2,22,731	3,18,676	1,78,560
Transferred to Capital Account.	1,50,000	3,00,000	..	Total	9,83,307	10,69,826	9,74,272
Total . . . . .	5,30,848	8,16,771	7,40,890	Closing balance on 31st March.			
Receipts during the year.				In Revenue Account . . . . .	1,36,402	3,06,682	3,08,345
On Revenue Account . . . . .	9,96,261	9,21,430	7,97,375	In Capital Account . . . . .	3,80,369	4,34,208	2,97,209
On Capital Account . . . . .	72,969	72,515	41,561	Transferred to Capital Account.	3,00,000	..	..
Loan from Government . . . . .	2,00,000	..	..	Total	8,16,771	7,40,890	6,05,554
Total . . . . .	12,69,230	9,93,945	8,38,936	GRAND TOTAL	18,00,078	18,10,716	15,79,826
GRAND TOTAL	18,00,078	18,10,716	15,79,826				

J. V. ALEXANDER,  
M.Inst.C.E.  
Chairman, Aden Settlement.

Settlement Office,  
Aden ;  
The 19th May 1934.

42

APPENDIX XXXII.

Statement of Capital Account.

Receipts.	1932-33, actuals.	1933-34, actuals.	1934-35, estimated.	Expenditure.	1932-33, actuals.	1933-34, actuals.	1934-35, estimated.
	Rs.	Rs.	Rs.		Rs.	Rs.	Rs.
Opening balance on 1st April	1,80,131	3,80,369	4,34,208	Expenditure during the year	2,22,731	3,18,676	1,78,560
Receipts during year	72,969	72,515	41,561	Transferred to Revenue Account during the year.	..	..	..
Transferred from Revenue Account during the year.	1,50,000	3,00,000	..	Closing balance on 31st March	3,80,369	4,34,208	2,97,209
Loan from Government	2,00,000	..	..	Total	6,03,100	7,52,884	4,75,769
Total	6,03,100	7,52,884	4,75,769				

80

Settlement Office,  
Aden;  
The 19th May 1934.

J. V. ALEXANDER,  
M.Isnt.C.E.,  
Chairman, Aden Settlement.

APPENDIX XXXIII.  
ADEN SETTLEMENT FUND.  
Statement of Revenue Account.

APPENDIX XXXIII.

ADEN SETTLEMENT FUND.

Statement of Revenue Account.

Receipts.	1932-33, actuals.	1933-34, actuals.	1934-35, estimated.	Expenditure.	1932-33, actuals.	1933-34, actuals.	1934-35, estimated.
	Rs.	Rs.	Rs.		Rs.	Rs.	Rs.
Opening balance on 1st April	2,00,717	1,36,402	3,06,682	Expenditure during the year excluding capital works and suspense accounts.	7,10,198	7,05,869	7,95,712
Receipts during the year excluding capital accounts and suspense accounts.	9,33,419	8,72,178	7,97,375	Expenditure of suspense accounts	50,378	45,281	..
Receipts on suspense accounts	62,842	49,252	..	Transferred to capital account for Water Supply and Drainage Schemes during the year.	3,00,000	..	..
Total	11,96,978	10,57,832	11,04,057	Closing balance on 31st March	1,36,402	3,06,682	3,08,345
				Total	11,96,978	10,57,832	11,04,057
				Surplus on the year's working excluding Capital Works and suspense accounts.	2,23,221	1,66,309	1,663

J. V. ALEXANDER,

M.Inst.C.E.,

Chairman, Aden Settlement.

Settlement Office,  
Aden;  
The 19th May 1934.

(43)



APPENDIX XXXIV.

	1924-25.	1925-26.	1926-27.	1927-28.	1928-29.	1929-30.	1930-31.	1931-32.	1932-33.	1933-34.
Grand Total, Sea-borne (foreign and Indian) Trade (Imports and Exports).	16,06,08,983	15,93,65,828	15,19,65,895	17,17,30,557	15,08,88,481	13,56,87,985	10,24,87,957	9,19,28,494	8,79,16,569	8,66,41,672
Total, Land Trade (Imports and Exports).	67,76,640	57,21,241	56,35,626	64,16,835	58,57,090	45,96,901	32,10,785	20,29,209	15,21,654	18,44,961
Grand Total, Sea-borne and Land Trade.	16,73,85,623	16,50,87,069	15,76,01,521	17,81,47,392	15,67,45,571	14,02,84,886	10,56,98,742	9,39,57,703	8,94,38,223	8,84,86,633

Statement showing cargoes

1923-24 . . .  
1924-25 . . .  
1925-26 . . .  
1926-27 . . .  
1927-28 . . .  
1928-29 . . .  
1929-30 . . .  
1930-31 . . .  
1931-32 . . .  
1932-33 . . .  
1933-34 . . .

This statement is for the medical assistance

44

APPENDIX XXXV.

Statement showing the number of merchant vessels which landed and took cargoes and the number of vessels which called for bunkers only.

Years.	Vessels landed and took cargoes.		Vessels called for bunkers.	
	No.	Tonnage.	No.	Tonnage.
1923-24 . . . . .	698	2,857,324	281	1,027,903
1924-25 . . . . .	713	2,914,718	298	1,112,161
1925-26 . . . . .	745	3,219,568	233	906,972
1926-27 . . . . .	984	3,942,145	278	1,130,169
1927-28 . . . . .	989	4,092,845	351	1,392,591
1928-29 . . . . .	997	4,170,838	383	1,380,376
1929-30 . . . . .	1034	4,445,898	392	1,475,951
1930-31 . . . . .	1106	4,565,619	280	983,771
1931-32 . . . . .	1109	4,592,168	272	1,004,173
1932-33 . . . . .	1070	4,509,885	306	1,412,310
1933-34 . . . . .	1154	4,920,052	298	1,334,385

This statement excludes vessels which called at the port for repairs, medical assistance or other special reasons.

APPENDIX XXXVI.

Statement showing the principal steamship companies whose vessels call regularly at Aden and of the services provided by them.

*Peninsular and Oriental Steam Navigation Company, Limited.*—Ports of call, London, Gibraltar, Marseilles, Port Said, Suez, Port Sudan, Aden, Bombay, Colombo, Calcutta, Straits, China, Japan, Australia, New Zealand, Tasmania and Homeward.

*Orient Line*—

*Outward.*—London, Gibraltar, Toulon, Naples, Port Said, Suez, Aden, Colombo, Fremantle, Adelaide, Melbourne, Sydney, Brisbane.

*Homeward.*—Same ports of call as above except that the vessel calls at Plymouth as well as London homeward and sometimes Southampton in the Summer.

*British India Steam Navigation Company, Limited.*—To and from Antwerp, Middlesborough, London, Gibraltar, Marseilles, Malta, Alexandria, Port Said, Suez, Port Sudan, Aden, Bombay, Bhavnagar, Port Okha, Bedi Bunder, Navalaki, Cutch Mandvie, Karachi, Colombo, Madras, Northern Coast Ports, Rangoon, Penang, Malay Coast Ports, Singapore, Mombasa, Tanga, Zanzibar, Dar-es-Salaam, Beira.

*Clan Ellerman and Harrison Joint Service.*—From Glasgow and Liverpool sometimes also Bristol Channel Ports, Port Said, Suez, Port Sudan, Aden, Mombasa, Zanzibar, Tanga and Dar-es-Salaam, returning from that Port and touching Aden when cargo offers.

*Ellerman and Bucknall Line.*—Calcutta, Madras, Colombo, Aden, Port Sudan (sometimes Djibouti), Port Said, Halifax, Boston, New York, Philadelphia, Baltimore, Norfolk.

2. From New York, Alexandria, Port Said, Suez, Port Sudan, Aden, Karachi, Bombay, Cochin, Colombo, Rangoon, Calcutta.

*Andrew Weir and Company.*—From Far East, Straits Settlements, Colombo, Aden, Port Sudan, Suez, Port Said, Boston, New York, Philadelphia and Baltimore.

*Clan Line.*—From Chittagong, Malabar Coast Ports, Aden, London, Glasgow.

*Union Castle.*—From London, Gibraltar, Marseilles, Genoa, Port Said, Suez, Port Sudan, Aden, Mombasa, Tanga, Zanzibar, Dar-es-Salaam, Port Amelia, Mozambique, Beira, Lourenco Marques, Natal and Homeward.

*Strick.*—From London, Glasgow, Manchester (or other Ports as per inducement), Marseilles, Port Said, Suez, Port Sudan (Jeddah optional), Aden and Persian Gulf Ports.

*Blue Funnel Line*—

*Homeward* from Japan, China, Hong-Kong, Singapore, Colombo, Port Said, Marseilles, and London.

*Brocklebank Line*—

*Outward* from Middlesborough, Antwerp, London, Port Said, Suez, Aden, Colombo, Tuticorin, Trincomali, Madras, Cocconada, Calcutta.

Bombay P  
time Berbera),  
Aden to Bomb  
latter Ports.

City Line.

British Te

H. Hogand

gong.

Asiatic Ste  
Rangoon, Chit

Loyal Tr

Trieste Soc. V

Bombay via

Penang, Singa

Aden to Suez.

Colombo, Fre

Trieste v

Zanzibar, Dar

East London

Calcutta and

Obbia, Mogad

to Massawa.

Messages

Mombasa, D

Majunga, Ne

Homeward v

2. Mars

cherry, Mad

same route.

3. Occa

Penang, Sir

Homeward.

Nippon

—From Yol

Colombo, A

Antwerp, Re

Isthmian

and Penang

Baltimore.

2. From

Aden to Chan

Outward

and Calcutta

Wilh. W

Homeva

Alexandria,

Hamburg, S

Port or othe

(45)

85

*Bombay Persian Line.*—From Bombay, Karachi, Shehr, Mukalla (some-time Berbera), Aden, Djibouti, Massawa, Port Sudan, Jeddah, returning *via* Aden to Bombay *via* Mukalla and Karachi if inducement offers at these two latter Ports.

*City Line.*—From Home Ports to Persian Gulf and Karachi.

*British Tanker Company.*—From and to Persian Gulf.

*H. Hogarth and Sons.*—Load Salt at Aden for Calcutta, Rangoon, Chittagong.

*Asiatic Steam Navigation Company.*—Load Salt at Aden for Calcutta, Rangoon, Chittagong.

*Lloyd Triestino, Italia, Tirrenia, Navigazione Libera Triestina S.A., Trieste Soc. Veneziana Navigaz. a Vapore, Venice.*—Genoa *via* Naples to Bombay *via* Aden ;—Trieste *via* Massawa and Aden, to Karachi, Colombo, Penang, Singapore, Hong-Kong, Shanghai, Kobe ;—Bombay and Karachi *via* Aden to Suez, Port Said, Brindisi, Venice, Trieste ;—Genoa *via* Aden to Colombo, Fremantle, Adelaide, Melbourne, Sydney, Brisbane.

Trieste *via* Aden to Hafun, Mogadiscio, Chisimaio, Mombasa, Tanga, Zanzibar, Dar-es-Salaam, Beira, Lourenco Marques, Durban, Port Elizabeth, East London ; Venice *via* Massawa and Aden to Colombo, Madras, Rangoon, Calcutta and Massawa, Djibouti, Aden, Bunder Cassim, Alula, Hafun, Eil Obbia, Mogadiscio, Merka, Brava, Chisimaio, Mombasa and back by same route to Massawa.

*Messageries Maritimes.*—Marseilles, Port Said, Suez, Djibouti, Aden, Mombasa, Dar-es-Salaam, Zanzibar, Moheli, Moroni, Mutsamudu, Mayotte, Majunga, Nossi-Be, Diego-Suarez, Tamatave, Reunion, Mauritius, and Homeward *via* same route.

2. Marseilles, Port Said, Djibouti (sometimes Aden), Colombo, Pondicherry, Madras, Singapore, Saigon, Tourane, Haiphong and Homeward *via* same route.

3. *Occasionally calling Aden.*—Marseilles, Port Said, Djibouti, Colombo, Penang, Singapore, Saigon, Hong-Kong, Shanghai, Kobe, Yokohama and Homeward.

*Nippon Yusen Kaisha and Osaka Shosen Kaisha. (Homeward way) only.*—From Yokohama, Osaka, Kobe, Shanghai, Hong-Kong, Singapore, Penang, Colombo, Aden, Suez, Port Said, Naples, Marseilles, Gibraltar, London, Antwerp, Rotterdam, Hamburg.

*Isthmian Line (Homeward).*—From Singapore, Port Swettenham, Belawan and Penang *via* Aden to Port Said, New York, Boston, Philadelphia and Baltimore.

2. From Calcutta to the same discharge Ports ; also from Calcutta *via* Aden to Charleston, Savannah, New Orleans, Galveston and Houston.

*Outward* from New York to Aden, Karachi, Bombay, Colombo, Madras and Calcutta.

*Wilk. Wilhelmsen.*—Do not usually discharge at Aden *outward*.

*Homeward* from Australian Ports to Aden, Port Sudan, Port Said, Alexandria, Malta, Marseilles, Dunkirk, Antwerp, Rotterdam, Bremen, Hamburg, Stavanger, Oslo ;—route sometimes varies to include a Spanish Port or other Scandinavian Ports.

*Hamburg Amerika Line—*

*Homeward.*—Dutch East Indian Ports *via* Aden to Antwerp, Rotterdam, Bremen, Hamburg.

*Deutsche Ost Afrikha Linie Line.*—Outward and Homeward as occasion offers.

*Outward.*—Hamburg, Amsterdam, Rotterdam, Antwerp, Southampton, Lisbon, Ceuta, Mealaga, Genoa, Port Said, Suez, Aden, Mombasa, Tanga, Zanzibar, Dar-es-Salaam, Ports Amelia, Mezambique, Beira, Lourenco Marques, Durban, East London, Port Elizabeth, Capetown, *homeward* Capetown and above Ports *via* Aden to Hamburg.

*Hansa Line.*—Bremen, Hamburg, Amsterdam, Rotterdam, Antwerp, Port Said, Suez, Yambo, Jeddah, Port Sudan, Djibouti, Aden, Muscat, Bunder Abbas, Lingah, Durban, Bahrein, Bushire, Koweit, Bandar Shahpur, Mohammerah and Basrah.

*Homeward.*—Suez, Port Said, Antwerp, Rotterdam or Amsterdam, Hamburg and Bremen.

*Coasting Vessels.*—Messrs. Cowasjee Dinshaw and Brothers and the Halal Shipping Company, Limited, maintain a fleet of 5 and 3 steamers respectively which run between Aden and Mukalla, Shehr, Berbera, Zeila, Perim, Djibouti, Mocha, Kamaran, Hodeidah, Gizan, Medi and Port Sudan. Very frequent services of Dhows also trade to and from these Ports and in addition to many other little Ports on both sides of Southern Red Sea, Gulf of Aden upto Persian Gulf and also to Socotra.

Many other Shipping Lines make occasional calls at Aden in connection with cargo, and other Lines call at Aden for Bunkers only.

The only ports for which there is a poor direct service are the Levant Spanish and Portuguese Ports. Cargo is sent with transhipment at Port Said.

Memorandum s  
License Fee for se  
Import Duty on  
Other License Fe  
Distillery Fees  
Still Head Duty  
Extra Fee for a  
Ganja License F  
License Fee on  
Duty on Ganja  
Other Items, W  
Fines and conf  
Sale proceeds  
Penalties  
Refunds

(46)

APPENDIX XXXVII.

Memorandum showing the Excise Receipts at Aden and Perim during the year 1933-34.

	1933-34	1932-33	Aden Receipts.	Perim Receipts.
	Rs. a. p.	Rs. a. p.	Rs. a. p.	Rs. a. p.
License Fee for selling Liquor . . . . .	10,448 0 0	176 0 0	10,448 0 0	176 0 0
Import Duty on Liquor . . . . .	1,25,819 1 0	4,172 10 0	1,25,819 1 0	4,172 10 0
Other License Fees . . . . .	..	..	..	..
Distillery Fees . . . . .	..	..	..	..
Still Head Duty . . . . .	29,887 8 0	..	29,887 8 0	..
Extra Fee for appointment of Agents . . . . .	..	..	..	..
Ganja License Fee . . . . .	1,507 0 0	..	1,507 0 0	..
License Fee on Toddy . . . . .	25 0 0	..	25 0 0	..
Duty on Ganja . . . . .	..	..	..	..
Other Items, Warehouse Rent . . . . .	1,858 11 0	..	1,858 11 0	..
Fines and confiscations . . . . .	312 7 0	..	312 7 0	..
Sale proceeds of unclaimed liquor . . . . .	..	..	..	..
Penalties . . . . .	..	..	..	..
Refunds . . . . .	31 0 3	..	31 0 3	..
Total . . . . .	1,69,888 11 3	4,348 10 0	1,69,888 11 3	4,348 10 0

A. F. FERRAM,  
Treasury Officer, Aden.

APPENDIX XXXVIII.

Comparative statement of revenue, etc., on account of Opium in the Aden Treasury during the official years 1932-33 and 1933-34.

	1932-33.	1933-34.	Decrease.
	Rs. a. p.	Rs. a. p.	Rs. a. p.
<i>Opium license fees including</i>			
Madak and Chandoo license fees . . . . .	717 0 0	673 0 0	44 0 0
Opium . . . . .	3,150 0 0	3,150 0 0	
Transshipment fees on opium . . . . .	..	..	
Sale proceeds of confiscated opium . . . . .	..	..	
Fines . . . . .	..	..	
Other Items . . . . .	..	..	
<b>Total Rupees . . . . .</b>	<b>3,867 0 0</b>	<b>3,823 0 0</b>	<b>44 0 0</b>

H. M.'s Treasury Office,  
Aden;  
The 9th June 1934.

A. F. FERRAM,  
Treasury Officer, Aden.

A. F. FERRAM,  
Treasury Officer, Aden.

Comparative stat  
Receipts.  
License fee for sell  
liquor.  
Import duty on liq  
Other License Fee  
Distillery Fees .  
Still Head Duty  
Extra Fees for app  
ment of Agents  
Ganja License Fe  
Other Items, v  
house rent,  
Fines and confis  
Duty on Ganja  
License fee on T  
Sale proceeds o  
claimed liquo  
Refunds . . .  
Total  
Charges.  
Salary of Est  
ment.  
House Rent to  
lishment.  
Contingencies  
T. A. to  
Establishme  
House and St  
Tax of Build  
Rewards to In  
Passages to  
Establishme  
Total Re

APPENDIX XXXIX.

Comparative statement of receipts and charges on account of Excise Department during the financial years 1932-33 and 1933-34.

	1932-33.	1933-34.	Increase.	Decrease.
	Rs. a. p.	Rs. a. p.	Rs. a. p.	Rs. a. p.
<i>Receipts.</i>				
License fee for selling liquor.	12,051 7 0	10,448 0 0	..	1,603 7 0
Import duty on liquor	1,37,668 15 0	1,25,806 0 0	..	11,862 15 0
Other License Fees .	..	..	..	..
Distillery Fees .	..	..	..	..
Still Head Duty .	31,012 8 0	29,887 8 0	..	1,125 0 0
Extra Fees for appointment of Agents.	..	..	..	..
Ganja License Fees .	485 5 0	67 0 0	..	418 5 0
Other Items, warehouse rent.	1,443 1 0	2,184 3 0	741 2 0	..
Fines and confiscations	83 9 0	..	..	83 9 0
Duty on Ganja .	..	1,440 0 0	1,440 0 0	..
License fee on Toddy	25 0 0	25 0 0	..	..
Sale proceeds of unclaimed liquor.	..	..	..	..
Refunds .	12 3 0	-20 0 0	7 13 0	..
<b>Total Rs. .</b>	<b>1,82,782 0 0</b>	<b>1,69,857 11 0</b>	<b>2,188 15 0</b>	<b>15,093 4 0</b>
<i>Charges.</i>				
Salary of Establishment.	16,319 13 0	16,410 3 0	90 6 0	..
House Rent to Establishment.	..	..	..	..
Contingencies .	1,172 11 0	1,171 5 9	..	1 5 3
T. A. to Abkari Establishment.	75 8 0	103 10 0	28 2 0	..
House and Sanitary Tax of Building.	..	..	..	..
Rewards to Informer	..	..	..	..
Passages to Abkari Establishment.	..	2,194 1 0	2,194 1 0	..
<b>Total Rupees .</b>	<b>17,568 0 0</b>	<b>19,879 3 9</b>	<b>2,312 9 0</b>	<b>1 5 3</b>

A. F. FERRAM,  
Collector of Customs, Salt and Excise, Aden.



APPENDIX XL.

Memorandum showing the Excise Receipts at Aden and Perim during the year 1933-34.

Items.	Aden Receipts.		Perim Receipts.	
	Rs.	A. P.	Rs.	A. P.
License fee for selling liquor . . . . .	10,448	0 0	176	0 0
Import duty on liquor . . . . .	1,25,806	0 0	4,172	10 0
Other License fees . . . . .	..	..	..	..
Distillery fees . . . . .	..	..	..	..
Still Head Duty . . . . .	29,887	8 0	..	..
Extra fee for appointment of Agents . . . . .	..	..	..	..
Ganja License fee . . . . .	67	0 0	..	..
License fee on Toddy . . . . .	25	0 0	..	..
Duty on Ganja . . . . .	1,440	0 0	..	..
Other items, warehouse rent . . . . .	2,184	3 0	..	..
Fines and Confiscations . . . . .	..	..	..	..
Sale proceeds of unclaimed liquor . . . . .	..	..	..	..
Penalties . . . . .	..	..	..	..
Refunds . . . . .	20	0 0	..	..
<b>Total</b> . . . . .	<b>1,69,857</b>	<b>11 0</b>	<b>4,348</b>	<b>10 0</b>

A. F. FERRAM,  
Collector of Customs, Salt and Excise, Aden.

Comparat  
Opium  
Madat and  
Opium

48

APPENDIX XLI.

Comparative statement of revenue, etc., on account of Opium in the Aden Treasury during the official year 1932-33 and 1933-34.

Items.	1932-33.			1933-34.			Decrease.		
	Rs.	A.	P.	Rs.	A.	P.	Rs.	A.	P.
<i>Opium license fees including</i>									
Madat and Chandool license fees . . . . .	717	0	0	673	0	0	44	0	0
Opium . . . . .	3,150	0	0	3,150	0	0	..		
<b>Total . . . . .</b>	<b>3,867</b>	<b>0</b>	<b>0</b>	<b>3,823</b>	<b>0</b>	<b>0</b>	<b>44</b>	<b>0</b>	<b>0</b>

A. F. FERRAM,  
Collector of Customs, Salt and Excise, Aden.

ing the  
receipts.  
A. P.  
0 0 0  
2 10 0  
10  
10 0  
Aden.

Items.  
Receipts in 1932-33.  
Receipts in 1933-34.  
Foreign Opium  
Country Opium  
Opium  
Hemp Drugs  
A. F. FERRAM,  
Collector of Customs, Salt & Excise, Aden.  
Aden;  
The 18th May 1933.

APPENDIX XLII.

Comparative statement showing the number of Excise Shops in Aden, and the Revenue realized therefrom during the years 1932-33 and 1933-34.

	1932-33.	1933-34.
<b>Foreign Liquor—</b>		
Retail sale . . . . .	16	16
Military Canteens . . . . .	5	5
Clubs . . . . .	9	8
Denatured spirits . . . . .	10	8
Essences . . . . .	8	10
<b>Country Liquor</b> . . . . .	2	2
<b>Opium</b> . . . . .	2	2
<b>Hemp Drugs</b> . . . . .	2	2
<b>Chemists-Druggists Licenses :—</b>		
Cocaine . . . . .	2	1
Opium . . . . .	2	1
Morphia . . . . .	2	1

Items.	Receipts in 1932-33.		Receipts in 1933-34.	
	Rs.	a. p.	Rs.	a. p.
Foreign Liquor . . . . .	1,41,143	11 0	1,34,895	0 0
Country Liquor . . . . .	32,465	12 0	31,246	8 0
Opium . . . . .	3,867	0 0	3,823	0 0
Hemp Drugs . . . . .	485	0	1,507	0 0

A. F. FERRAM,  
Collector of Customs, Salt & Excise, Aden.

Aden ;  
The 18th May 1933.

Statement of

License  
No.  
License

Aden

The 18th T

49

APPENDIX XLIII.

Statement showing Revenue realised from Petroleum and Explosives during the Financial year 1933-34.

Aden, and 33-34.  
1933-34.  
16  
5  
8  
8  
10  
2  
2  
2  
1  
1  
1  
AM,  
ise, Aden.

		Rs. A. P.	
License fees for the Possession, Transport, Export of Non-dangerous petroleum		3,049	0 0
License fees for Import and Export of Explosives		3	8 0
<b>Total</b>		<b>3,052</b>	<b>8 0</b>

		Rs. A. P.	
Salary of Staff Establishment		1,750	14 0
House Rent and Other Allowances		307	12 0
Contingencies		282	0 0
T. A. to Establishment		7	8 0
Allowance to Aden Settlement		200	0 0
Rewards		..	..
Petty Contingencies and Repairs		100	13 0
<b>Total</b>		<b>2,646</b>	<b>13 0</b>

A. F. FERRAM,  
Collector of Customs, Salt and Excise,  
Aden.  
Aden;  
The 18th May 1933.

APPENDIX XLIV.

Comparative Statement of Receipts and Charges of the Salt Department for the financial years 1932-33 and 1933-34.

Items.	1932-33.			1933-34.			Increase.		Decrease.			
	Rs.	A.	P.	Rs.	A.	P.	Rs.	A.	P.	Rs.	A.	P.
<i>Aden Receipts.</i>												
½ Royalty from Aden Salt Works	19,745	13	0	18,480	8	0	..			1,265	5	0
Royalty from Indo-Aden Salt Works	31,49	12	0	32,241	7	0	750	11	0	..		
Royalty from Hajibhoy Aden Salt Works	23,550	15	0	28,067	12	0	4,516	13	0	..		
Royalty from Little Aden Salt Works	15,884	14	0	19,545	3	0	3,660	5	0	..		
Royalty from Sheik Mehdi bin Ali	14	4	0	29	10	0	15	6	0	..		
Excise Duty from Arab Salt Works	4,935	3	0	5,376	14	0	441	11	0	..		
Miscellaneous	..			13	2	0	13	2	0	..		
<b>Total</b>	<b>95,621</b>	<b>13</b>	<b>0</b>	<b>103,754</b>	<b>8</b>	<b>0</b>	<b>9,398</b>	<b>0</b>	<b>0</b>	<b>1,265</b>	<b>5</b>	<b>0</b>
<i>Perim Receipts.</i>												
Salt Import Duty	78	15	6	91	13	6	12	14	0	..		
<i>Charges.</i>												
Salary of Salt Establishment	1,750	14	0	1,749	0	0	..			1	14	0
House Rent and Other Allowances	207	12	0	232	0	0	24	4	0	..		
Contingencies	282	0	6	400	0	0	117	15	6	..		
T. A. to Establishment	7	6	0	16	4	0	8	14	0	..		
Allowance to Aden Settlement	300	0	0	300	0	0	..			..		
Rewards	..			..			..			..		
Petty Constructions and Repairs	100	13	0	66	0	0	..			34	13	0
<b>Total</b>	<b>2,658</b>	<b>13</b>	<b>6</b>	<b>2,763</b>	<b>4</b>	<b>0</b>	<b>151</b>	<b>1</b>	<b>6</b>	<b>36</b>	<b>11</b>	<b>0</b>

A. F. FERRAM,

Collector of Customs, Salt and Excise,  
Aden.

Aden ;

The 18th May 1933.

Statement s  
1. Roy  
2. Am  
3. Ho  
4. Sar  
5. Qu  
Aden  
The 18th



96

APPENDIX XLVI.

Statement showing the transactions of the Aden Postal Division during the years 1932-33 and 1933-34.

Particulars.	1932-33.			1933-34.			Commission on M. O. Issued for 1933-34.		
	Rs.	A.	P.	Rs.	A.	P.	Rs.	A.	P.
Amount of Money Orders issued . . .	5,57,849	9	7	5,37,831	9	7	6,139	12	0
Amount of Money Orders paid . . .	2,89,573	2	6	3,12,749	0	0			
Amount of Savings Bank deposits . . .	2,62,050	9	1	2,87,378	15	5			
Amount of Savings Bank withdrawals . . .	2,27,026	11	8	2,02,833	5	10			
Amount of Cash Certificates purchased . . .	2,47,147	4	0	2,51,452	12	0			
Amount of Cash Certificates discharged . . .	94,033	4	0	48,228	0	0			

H. H. HEBBERD,  
Postmaster, Aden.

Aden ;  
The 20th May 1933.

APPENDIX XLVII.  
FORM No. I.  
Statement of Instruments registered and of the Value of Property transferred by registered Instruments together with the

51

APPENDIX XLVII.  
FORM No. I.

Statement of Instruments registered and of the Value of Property transferred by registered Instruments together with the Fees thereof in the District of Aden for the year 1933-34.  
Immovable Property (Book I).

IMMOVABLE PROPERTY (BOOK I).										
Compulsory Registrations affecting immovable property.										
District.	Number of registration offices.	Gifts of immovable property [Section 17 (1), clause (a).]		Sales or exchanges of the value of Rs. 100 and upwards.		Sales or exchanges of value less than Rs. 100 (Sections 54 and 118 of Transfer of Property Act).		Number.	Aggregate value.	Fees.
		Number.	Aggregate value.	Number.	Aggregate value.	Number.	Aggregate value.			
. 1	2	3	4	5	6	7	8	9	10	11
Aden 1933	2	3	5,000	22	218	4,05,326	1,451	23	941	36
1932	2	7	8,200	45	264	6,59,813	1,876	14	530	29



APPENDIX XLVII—*contd.*

IMMOVABLE PROPERTY (BOOK 1)—*contd.*

Compulsory Registrations affecting immovable property—*contd.*

District.	Mortgages.		Others registered under section 17 (1), clauses (b) and (c).		Leases (other than perpetual lease).		Amount of Fees. premia.	Value of annual rents.	Number.	Fees.	Number.	Aggregate value.	Fees.	Number.	Aggregate value.	Fees.	Number.	Aggregate value.	Fees.	Number.	Aggregate value.
	Number.	Aggregate value.	Number.	Fees.	Number.	Fees.															
Aden 1933 . . . . .	99	1,42,100	639	14	15	16	17	18	19	20	21	109	3,307	8,741	109	3,307	8,741	109	3,307	8,741	109
1932 . . . . .	98	4,12,255	947	14	15	16	17	18	19	20	21	163	5,524	4,193	163	5,524	4,193	163	5,524	4,193	163

APPENDIX XLVII—*concl'd.*

(52)

1932 . . . . . 98 4,12,235 947 27 70,713 201 46 5,524 4,193 163

APPENDIX XLVII—concl'd.

IMMOVABLE PROPERTY (BOOK 1)—concl'd.

Compulsory Registrations affecting immovable property—concl'd.

District.	Total compulsory registrations affecting immovable property.		Others registered under section 18, clauses (a) and (b).		Miscellaneous Registrations other than certified copies of decrees and orders of Court.		Total optional registrations affecting immovable property.		Total (compulsory and optional) affecting immovable property (columns 22 to 24 and 31 to 33).	
	Number.	Aggregate value.	Number.	Aggregate value.	Number.	Aggregate value.	Number.	Aggregate value.	Number.	Aggregate value.
1	22	23	25	26	28	29	31	32	34	35
		24	27	30	33	36				
Aden 1933 . . . . .	392	7,38,914	..	..	1	20,000	6	20,000	6	7,58,914
1932 . . . . .	456	11,61,208	4	3,600	..	..	4	3,600	26	11,64,808
		3,261	26	..	..	..	..	..	..	3,287

E. WESTON,

Inspector General of Registration,  
Aden Province, Aden.

APPENDIX XLVIII.  
FORM No. II.

Statement of Instruments registered and of the Value of Property transferred by registered Instruments together with the Fees ther of in the District of Aden for the year 1933-34.  
Moveable Property (Book 4) and Wills (Book 3).

District.	Optional.						All other documents registered under Section 18, clause (f).			Total registrations affecting moveable property (Book 4).			Optional.	
	Sales, etc., of moveable property [Section 18, clause (d)].		Bonds or obligations for payment of money [Section 18, clause (f)].		Fees.		Number.	Fees.	Number.	Fees.	Number.	Fees.	Number.	Fees.
	Number.	Aggre-gate value.	Number.	Aggre-gate value.	Number.	Aggre-gate value.								
1	2	3	4	5	6	7	8	9	10	11	12	13	14	15
Aden 1933 . . . . .	..	..	..	1	9,000	18	18	45,300	131	19	54,300	149	..	..
1932 . . . . .	1	91	2	4	4,050	19	14	3,21,000	397	19	3,25,141	418	3	10

E. WESTON.  
Inspector General of Registration,  
Aden Province, Aden.

E. WESTON,  
Inspector General of Registration,  
Aden Province, Aden.

APPENDIX XLIX.

Statement of Income from Fees on Registrations and all other Receipts with the Number of Operations thereunder.

District.	Registrations under Section 25.		Registrations under Section 3.		Visits paid (Sections 31, 33 and 38).		Inspection of Books 1 and 2 and the Indices to Book I [Section 57 (1)].	
	Number.	Fines.	Number.	Fines.	Number.	Fees.	Number.	Fees.
1	2	3	4	5	6	7	8	9
Aden 1933	..	..	..	..	19	365	13	33
1932	1	1	11	25	22	440	24	56

APPENDIX XLIX—*contd.*

District.	Applications for copies of entries in Books and Indices.		Powers of Attorney authenticated.		All other receipts.	Total receipts.	Total of all registrations, Forms I (Cols. 34 and 36) and II (Col. 10).		Total income.	Total expenditure (Form IV).	Total net income.
	Number.	Fees.	Number.	Fees.			Number.	Fees.			
1	10	11	12	13	14	15	16	17		18	19
Aden 1933	25	63	16	30	267	758	412	2,751	3,509	3,073	436
1932	33	81	11	14	1,277	1,894	482	3,715	5,609	2,018	3,591

E. WESTON,  
Inspector General of Registration,  
Aden Province, Aden.

State

State

'Administration Report of Aden for the year ending 31 March 1934' [54r]  
(100/106)

(54)

103

APPENDIX L.

Statement of Expenditure in the District of Aden for the year 1933-34.

	1932.	1933.
Fixed salaries of Registering Officers . . . . .	1,683	1,573
Cost of Establishment--		
(a) Permanent . . . . .	240	240
(b) Temporary . . . . .	. . . . .	. . . . .
Total . . . . .	240	240
Other items of Expenditure . . . . .	218	1,260
Total Expenditure . . . . .	2,018	3,073

E. WESTON,  
Inspector General of Registration,  
Aden Province, Aden.

APPENDIX LI.

Statement of Principal Operations other than Registration in Books I—III  
and IV in the District of Aden for the year 1933-34.

The Number of orders and certificates filed in Book  
No. 1 under Section 89 of the Registration Act,  
under the Code of Civil Procedure was 32 in  
1933 and 10 in 1932 . . . . .

E. WESTON,  
Inspector General of Registration,  
Aden Province, Aden.

E. WESTON,  
Inspector General of Registration,  
Aden Province, Aden.

'Administration Report of Aden for the year ending 31 March 1934' [54v]  
(101/106)

104

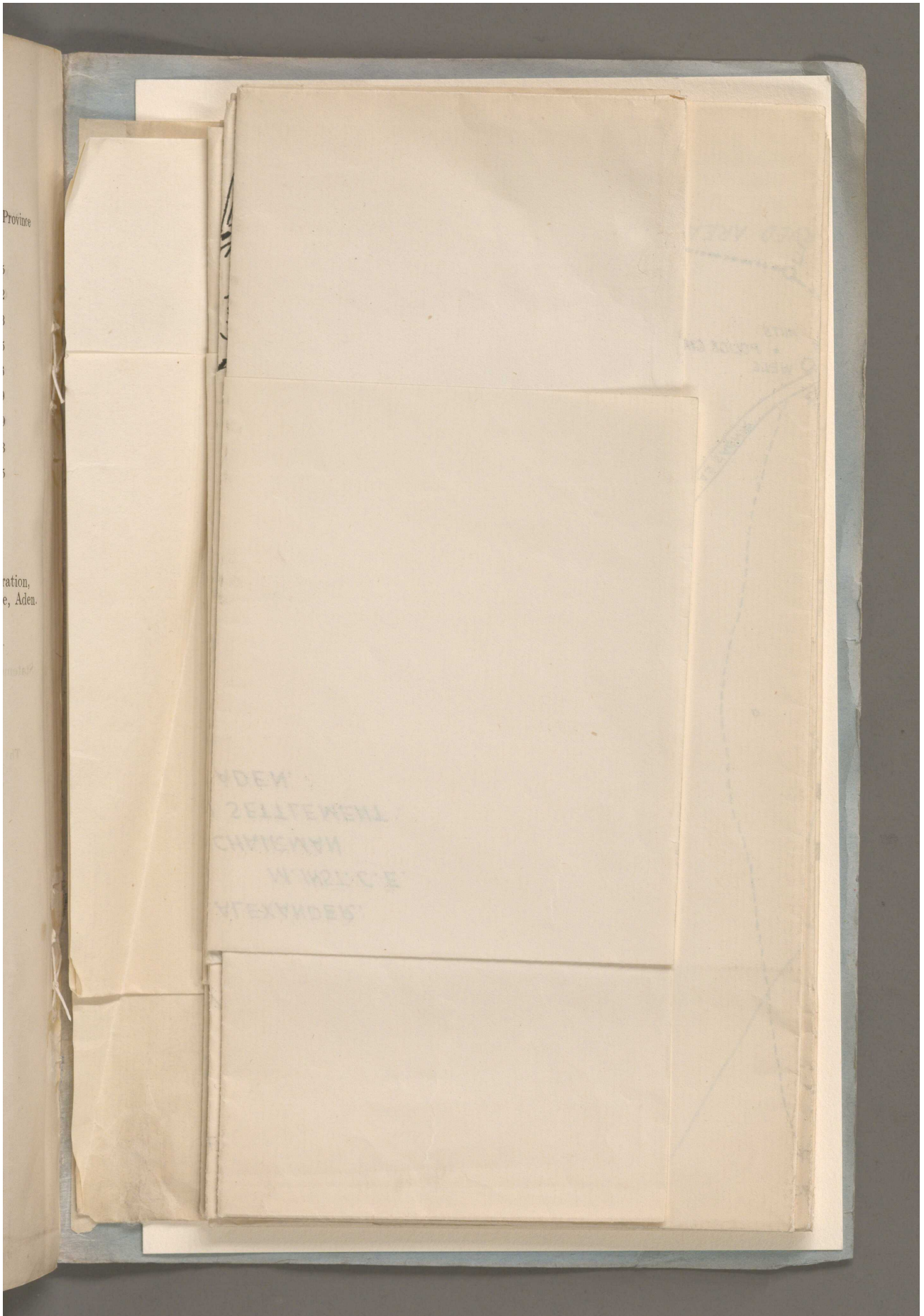
APPENDIX LII.

Statement showing the number of Registrations, Income, etc., in the Province of Aden for the calendar year 1933-34.

No. in Book I . . . . .	385
Book IV . . . . .	22
Searches . . . . .	13
Copies . . . . .	25
Powers of attorney authenticated . . . . .	16
Visits . . . . .	19
Income . . . . .	3,509
Expenditure . . . . .	3,073
Net Income . . . . .	435

E. WESTON,  
Inspector General of Registration,  
Aden Province, Aden.

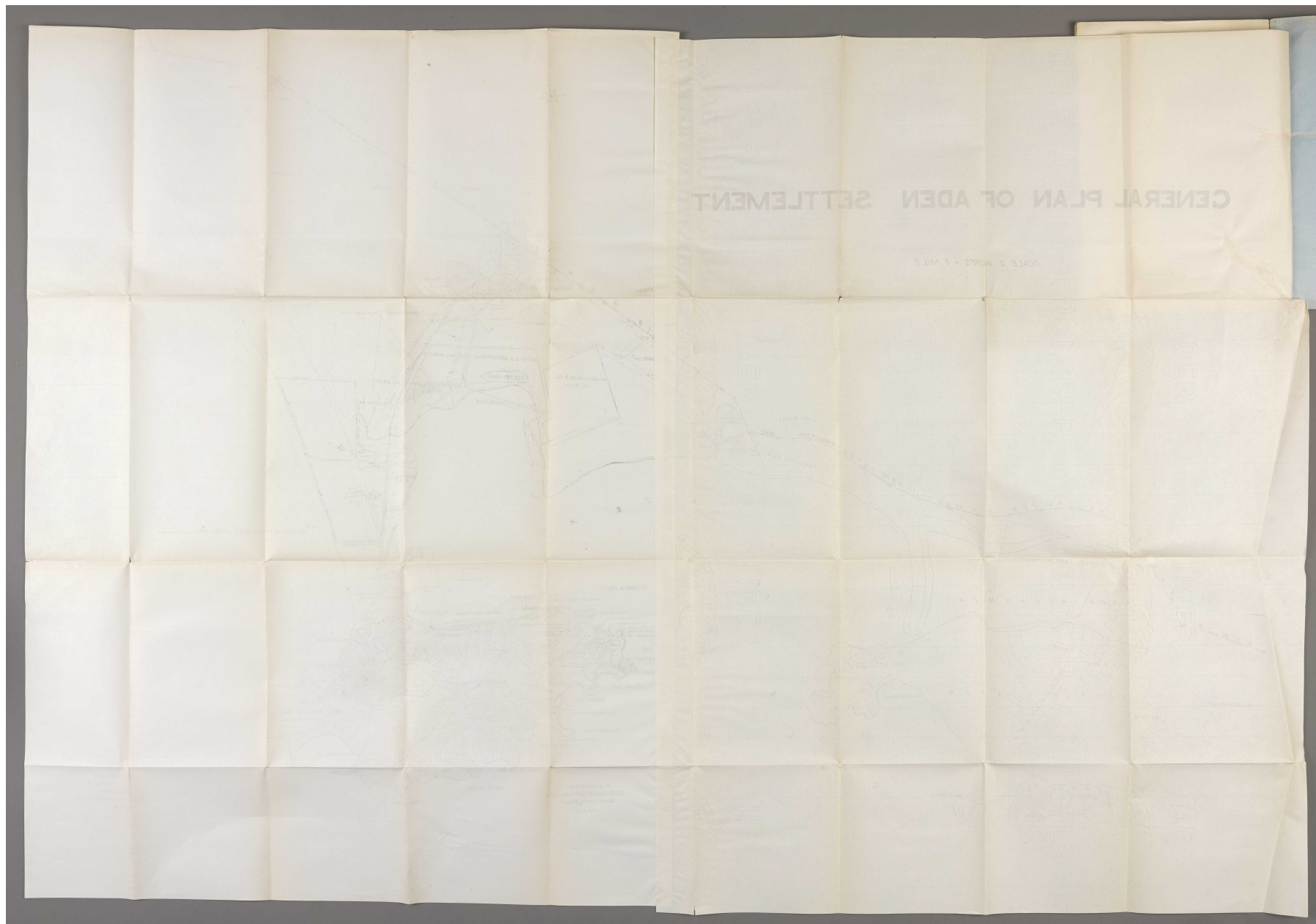
'GENERAL PLAN OF ADEN SETTLEMENT' [55r] (1/4)







'GENERAL PLAN OF ADEN SETTLEMENT' [55v] (3/4)





'Administration Report of Aden for the year ending 31 March 1934' [back-i]  
(106/106)

