

This PDF was generated on 10/12/2021 from online resources of
the **Qatar Digital Library**

The online record can be viewed at:

http://www.qdl.qa/en/archive/81055/vdc_100000000193.0x000249

It contains extra information, high resolution zoomable views and transcriptions.

'File 73/7 II Annex (D 22) Map showing limits of Koweit principality'

Holding Institution	British Library: India Office Records and Private Papers
Reference	IOR/R/15/1/612
Date(s)	4 Aug 1912 (CE, Gregorian)
Written in	English in Latin
Extent and Format	1 file (4 folios)
Copyright for document	Open Government Licence



About this record

The file contains three identical copies of 'MAP OF THE KUWAIT HINTERLAND', with a red line marking its proposed limits. The maps were sent as enclosures to a letter from Percy Cox, Political Resident at Bushire, to the Secretary to the Government of India Foreign Department at Simla, dated 4 August 1912 (folio 150 in IOR/R/15/1/611). The letter was part of a discussion about the status and definition of Kuwait. This discussion was itself part of Anglo-Turkish negotiations connected to the Baghdad Railway and its extension to Basra.

Imprint:

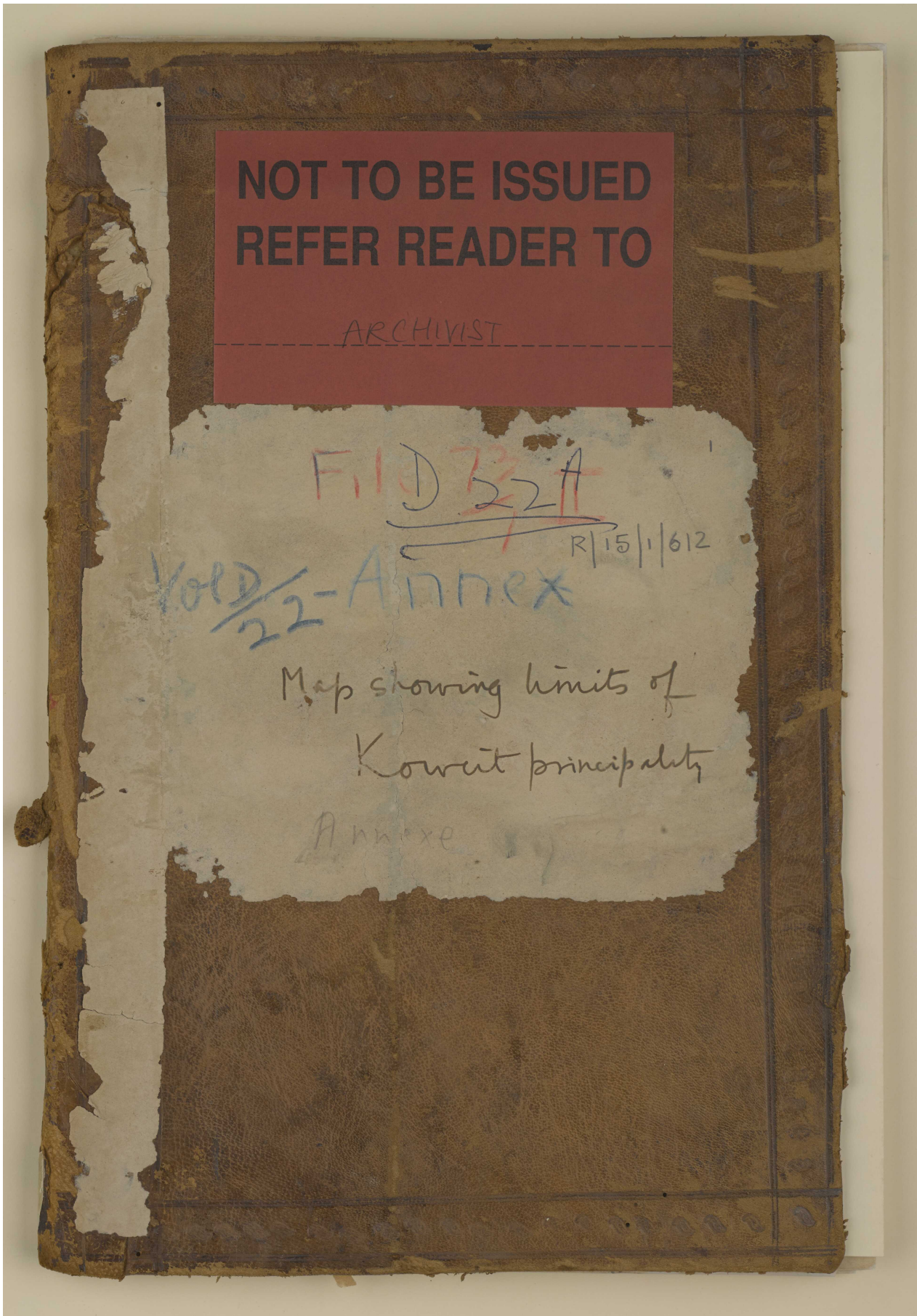
Heliozincographed at the Survey of India Offices, Calcutta.

Distinctive Features:

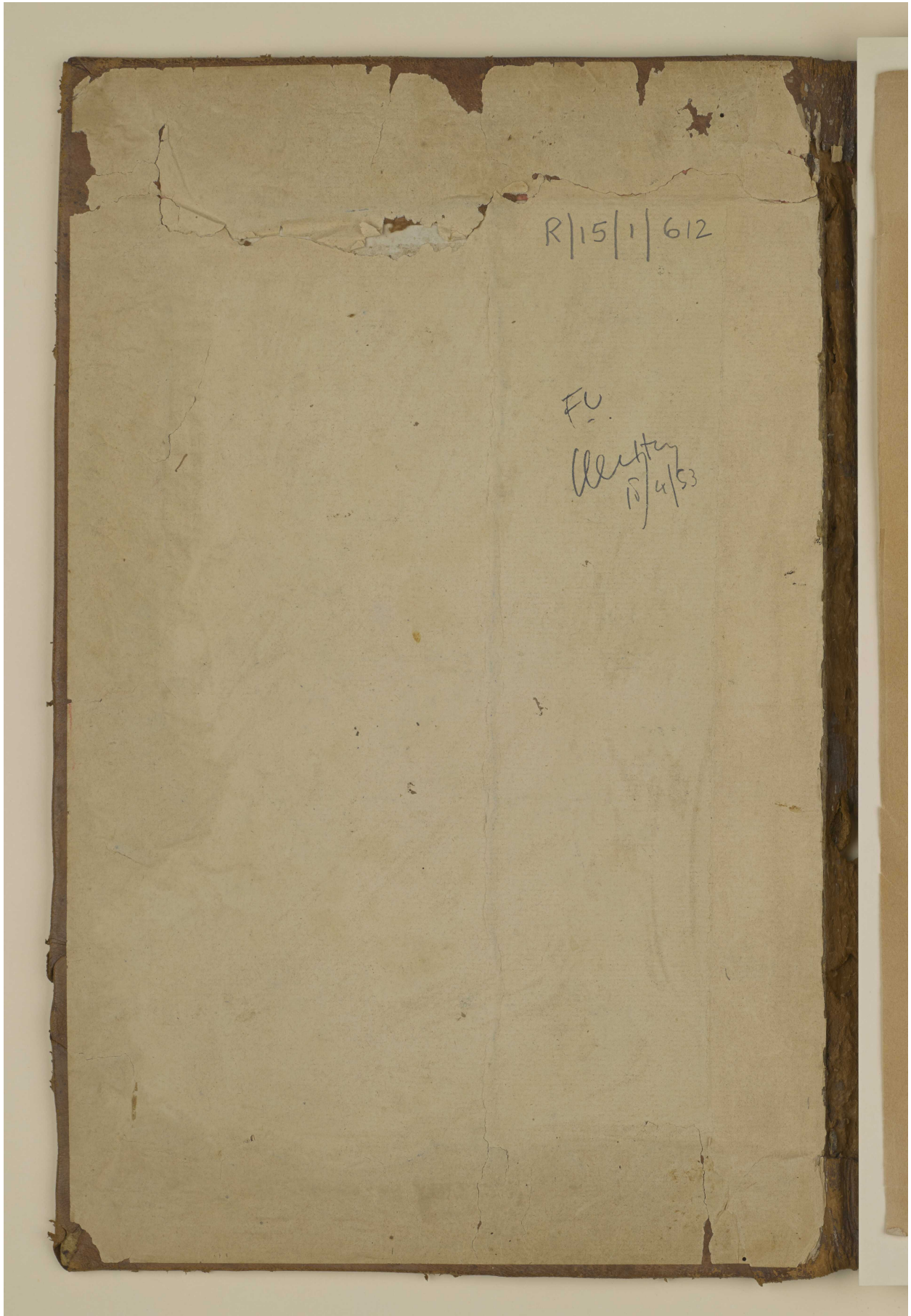
Relief shown by contours and spot heights.

An explanatory note on sources used in compiling the map and a key to symbols at the bottom margin.

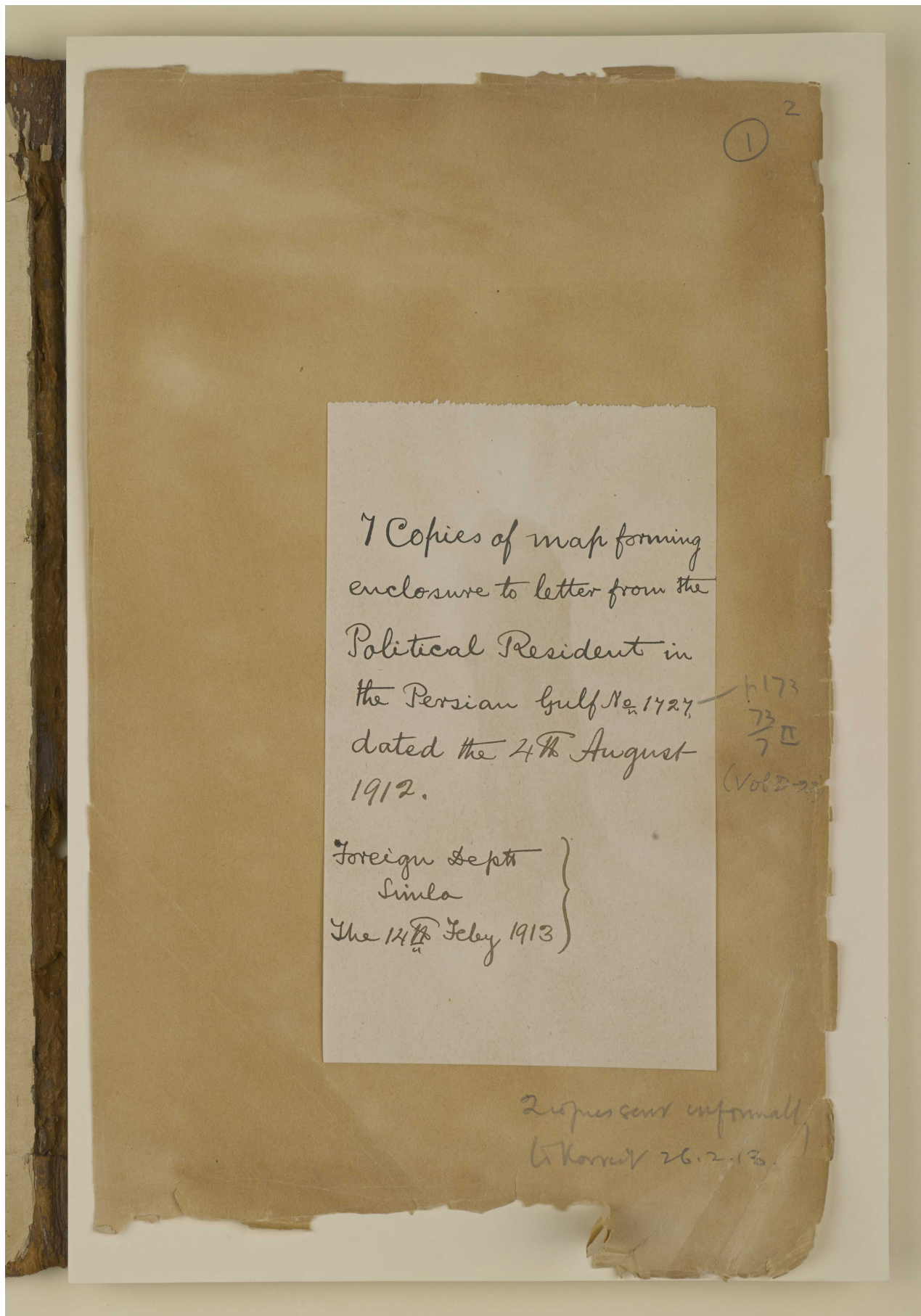
'File 73/7 II Annex (D 22) Map showing limits of Koweit principality' [front]
(1/18)



'File 73/7 II Annex (D 22) Map showing limits of Koweit principality' [front-1]
(2/18)



'File 73/7 II Annex (D 22) Map showing limits of Koweit principality' [1r]
(3/18)



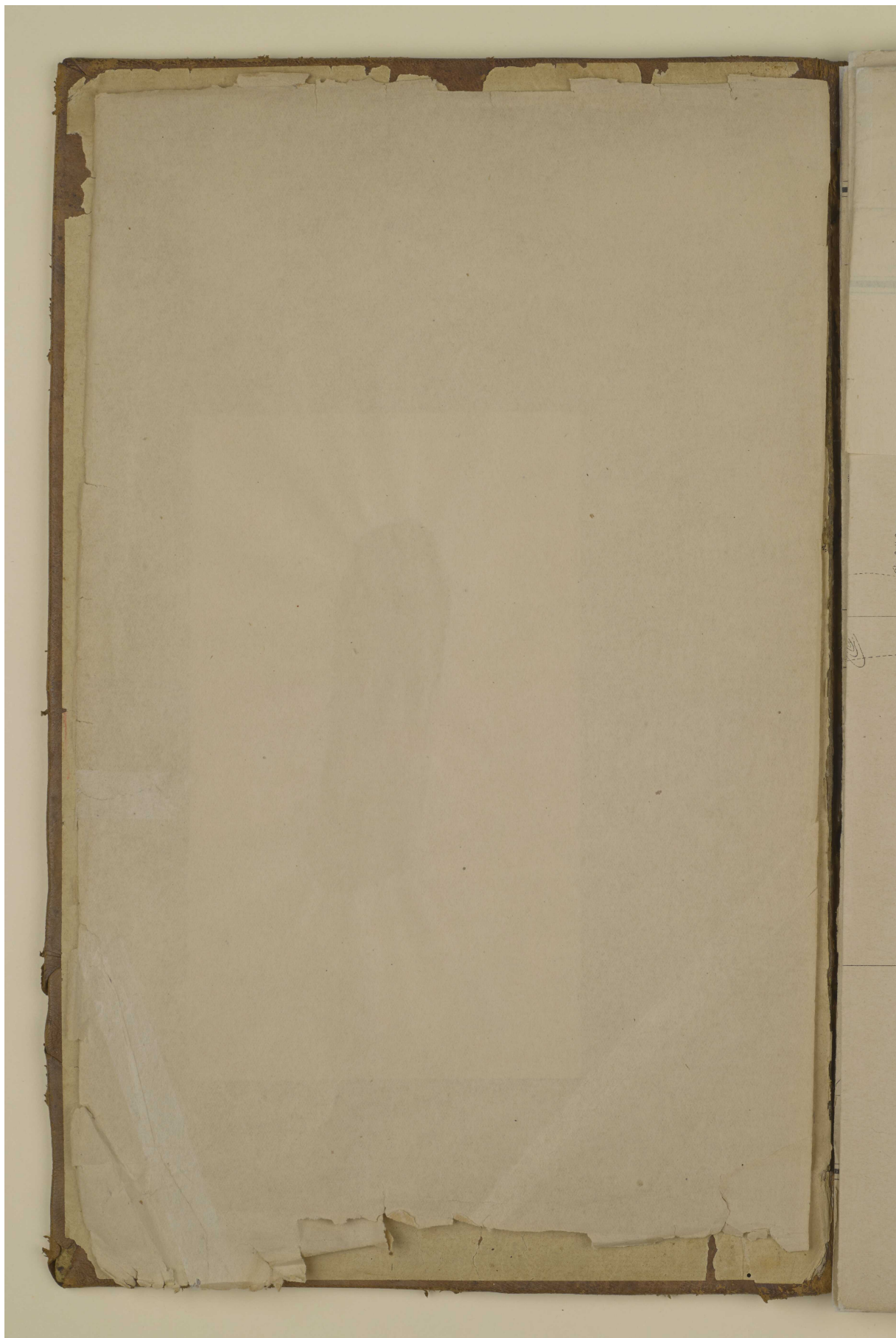
7 Copies of map forming
enclosure to letter from the
Political Resident in
the Persian Gulf No. 1427
dated the 4th August
1912.

h173
73/70
(Vol 22)

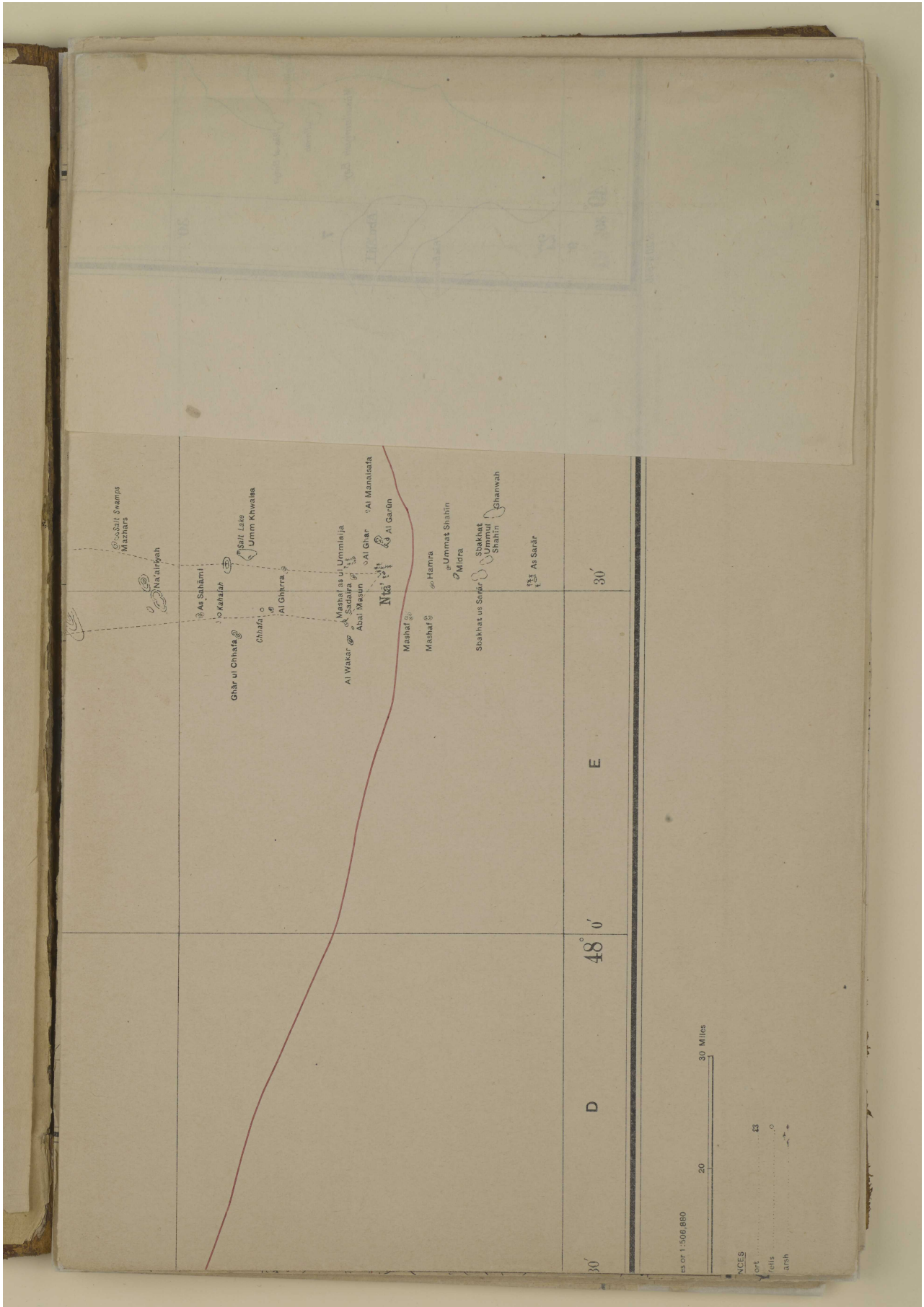
Foreign Dept }
Simla }
The 14th Feby 1913 }

2 copies sent informally
to Kuwait 26.2.13.

'File 73/7 II Annex (D 22) Map showing limits of Koweit principality' [1v]
(4/18)



'File 73/7 II Annex (D 22) Map showing limits of Koweit principality' [2r]
(5/18)



'File 73/7 II Annex (D 22) Map showing limits of Kuwait principality' [2r]
(6/18)

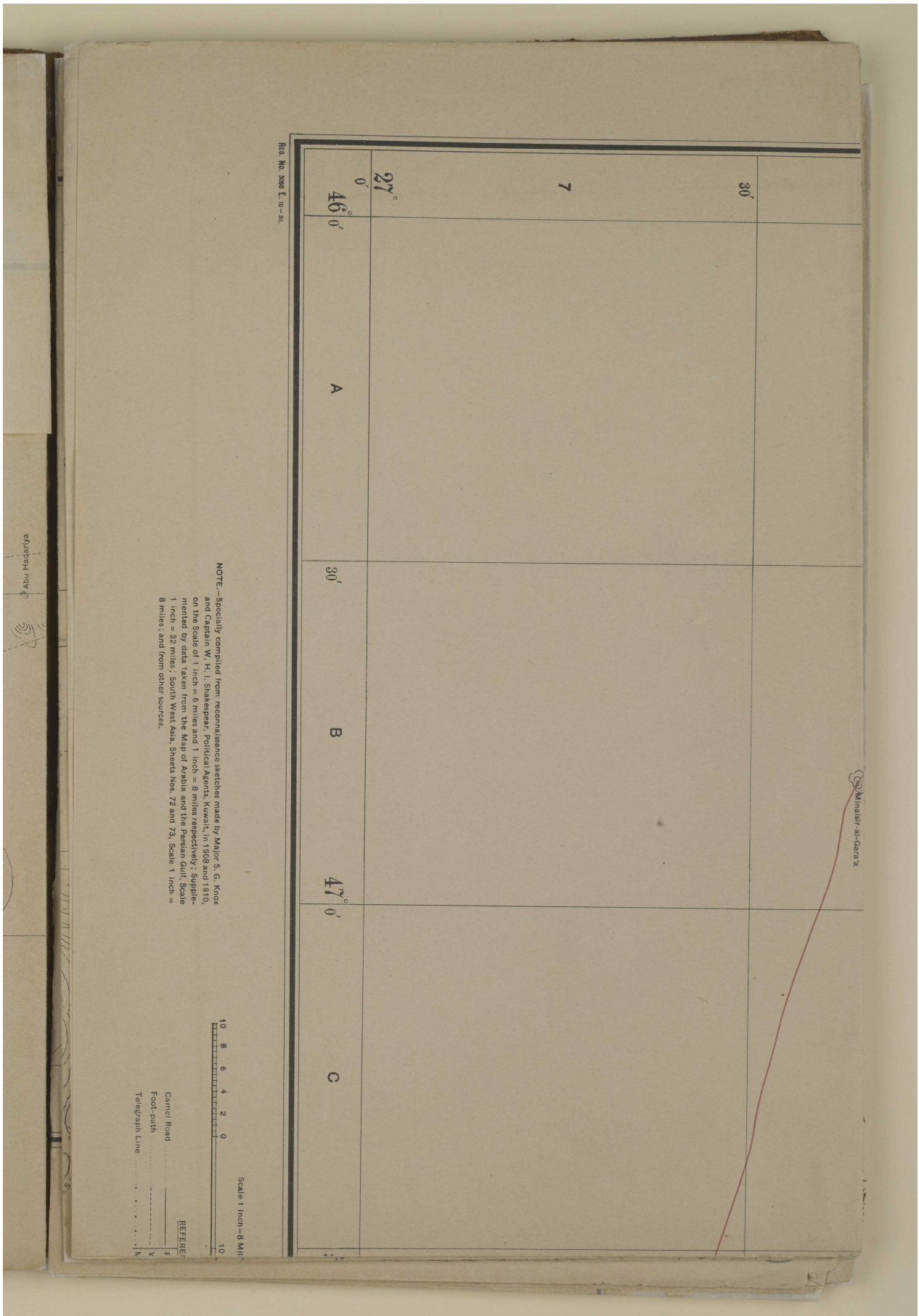


'File 73/7 II Annex (D 22) Map showing limits of Koweit principality' [2v]
(7/18)





'File 73/7 II Annex (D 22) Map showing limits of Koweit principality' [3r]
(9/18)



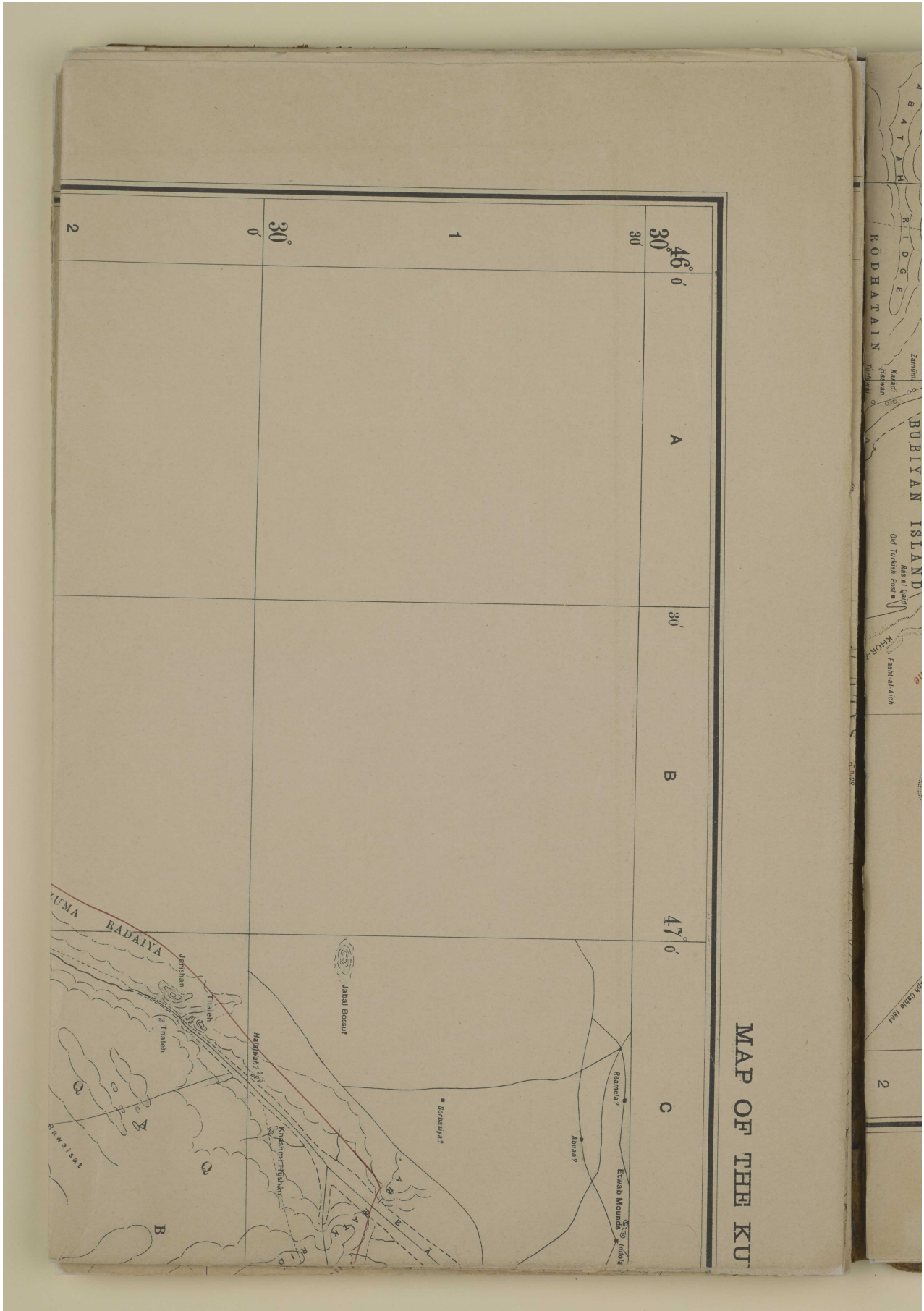
'File 73/7 II Annex (D 22) Map showing limits of Kuwait principality' [3r]
(10/18)



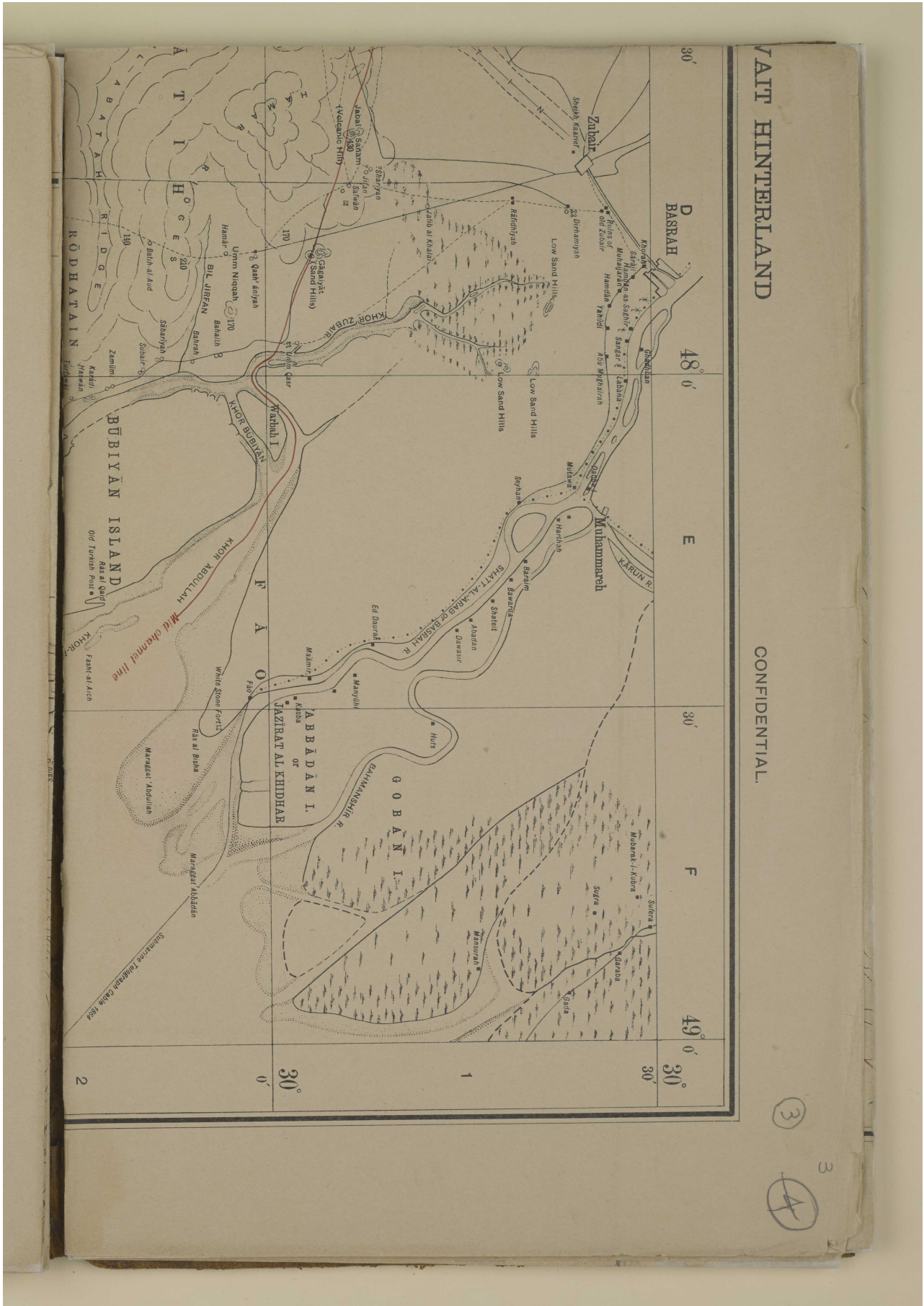
'File 73/7 II Annex (D 22) Map showing limits of Koweit principality' [3v]
(11/18)



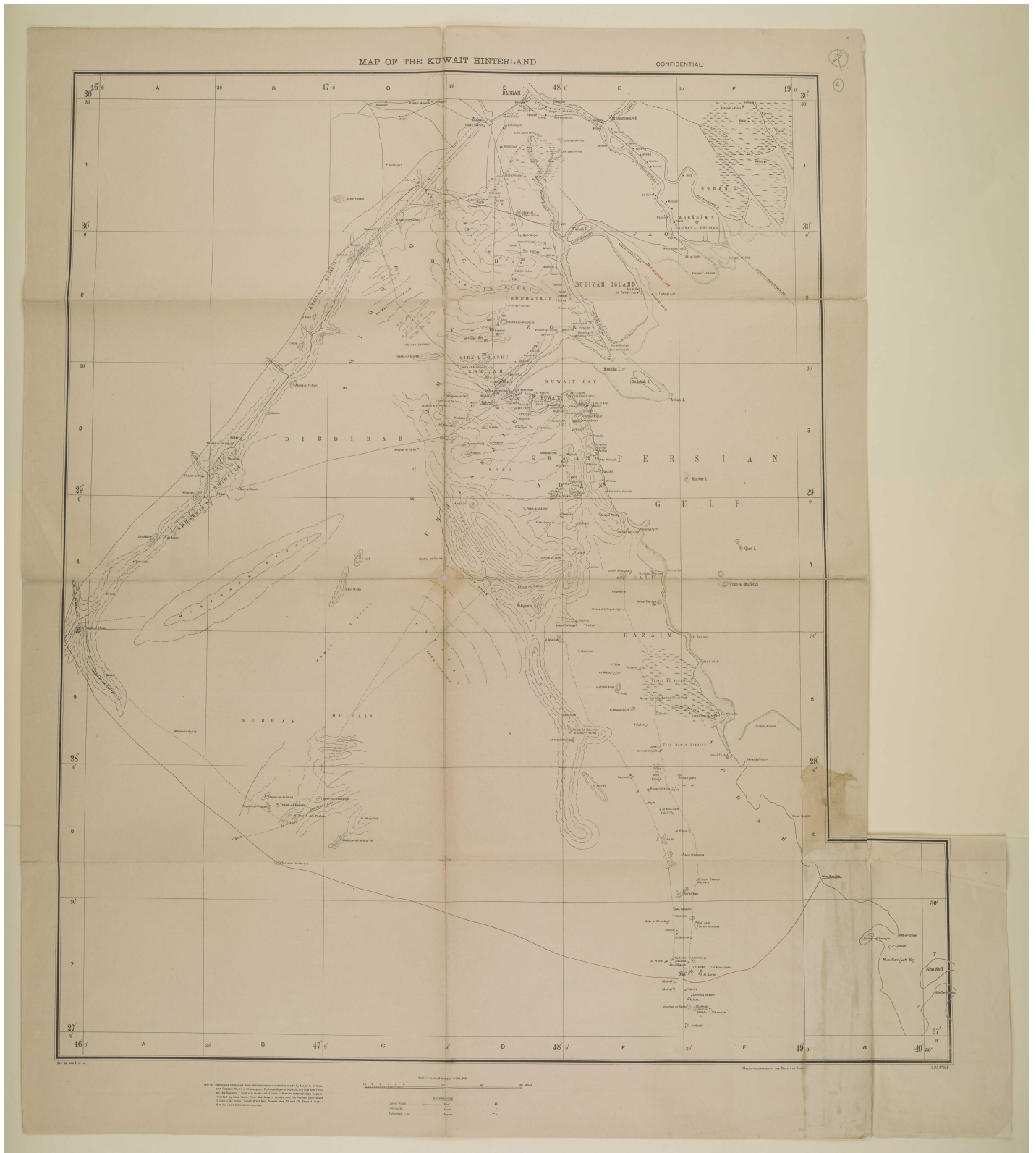
'File 73/7 II Annex (D 22) Map showing limits of Koweit principality' [3v]
(12/18)



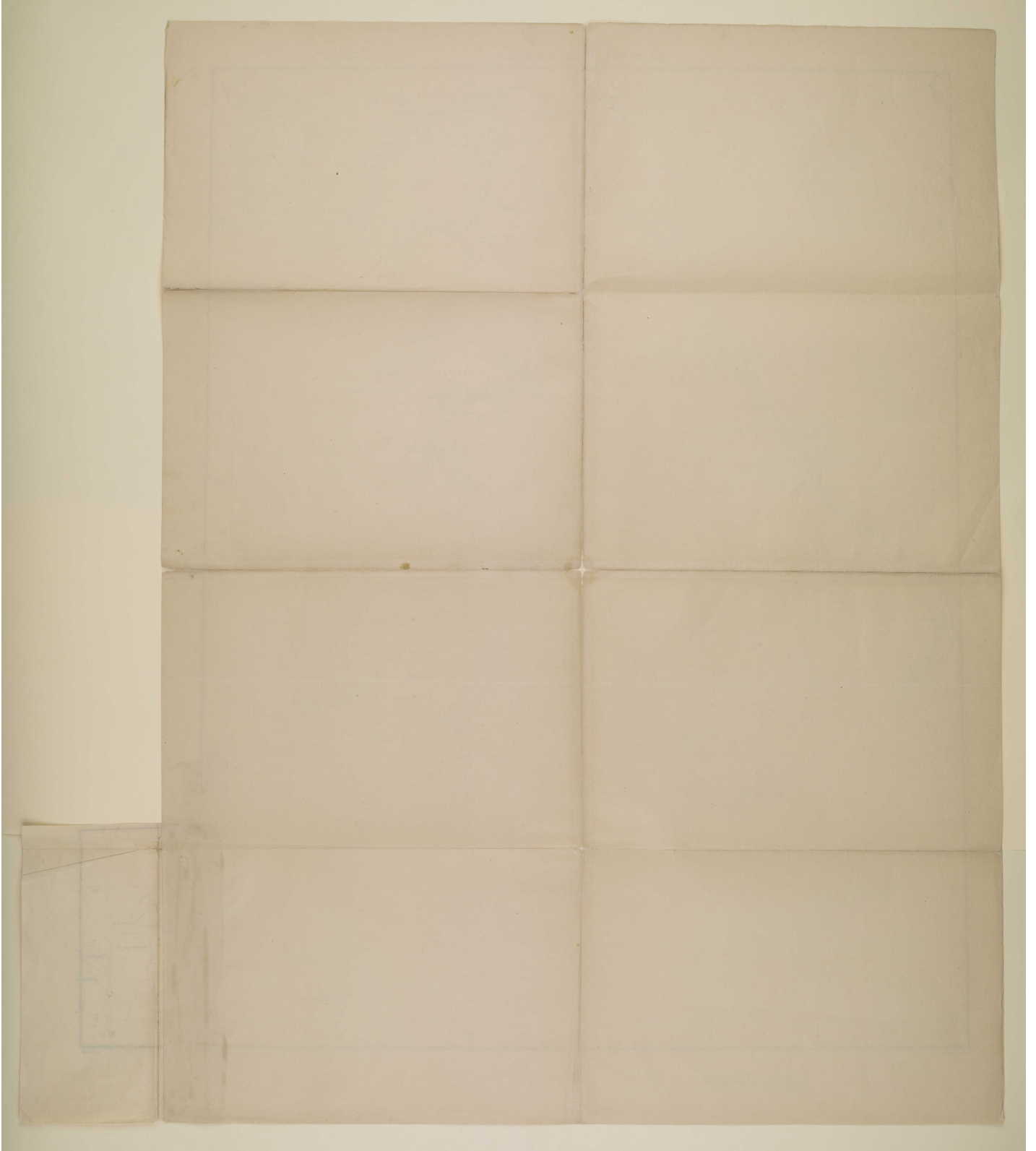
'File 73/7 II Annex (D 22) Map showing limits of Kuwait principality' [4r]
(13/18)



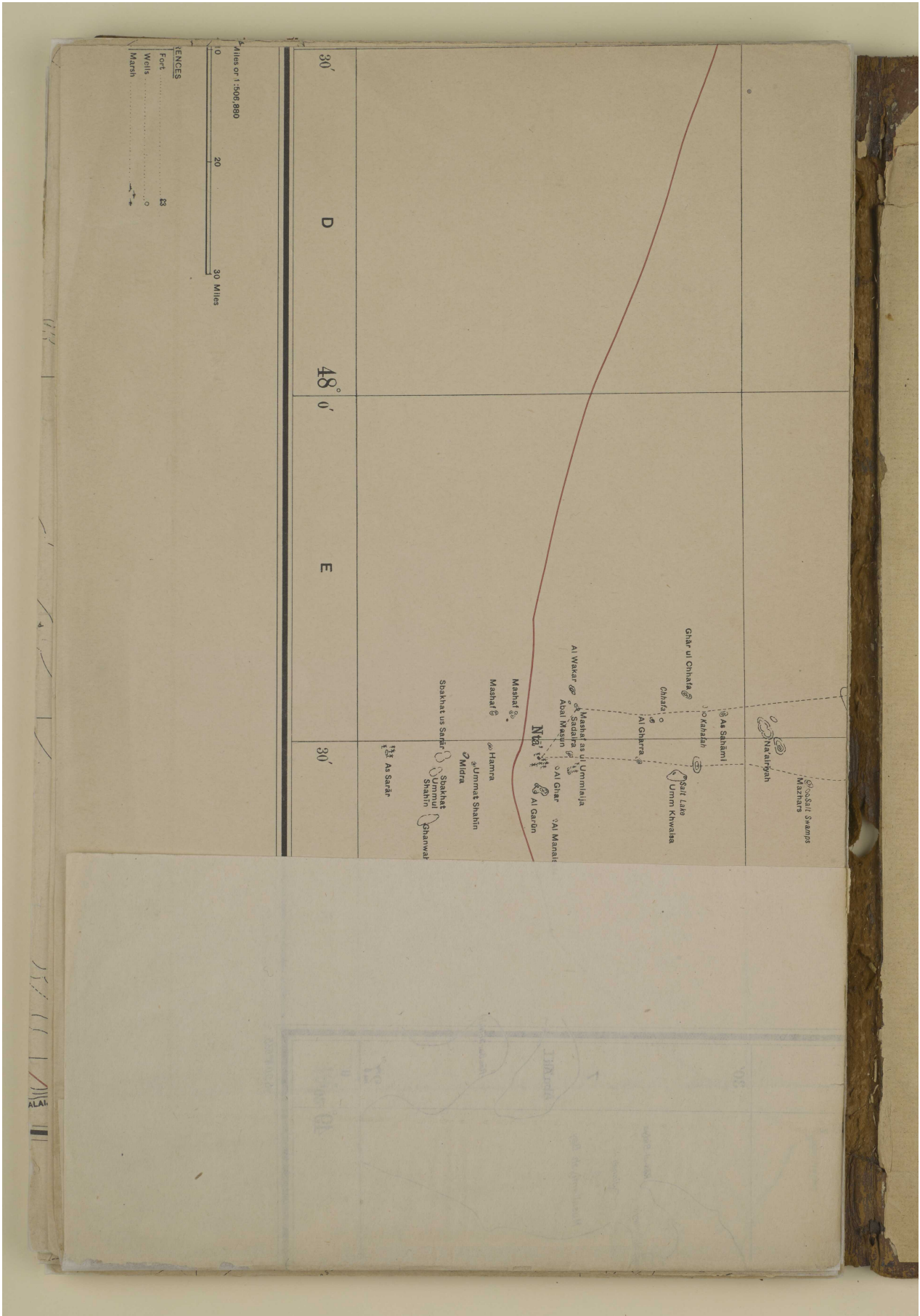
'File 73/7 II Annex (D 22) Map showing limits of Kuwait principality' [4r]
(14/18)



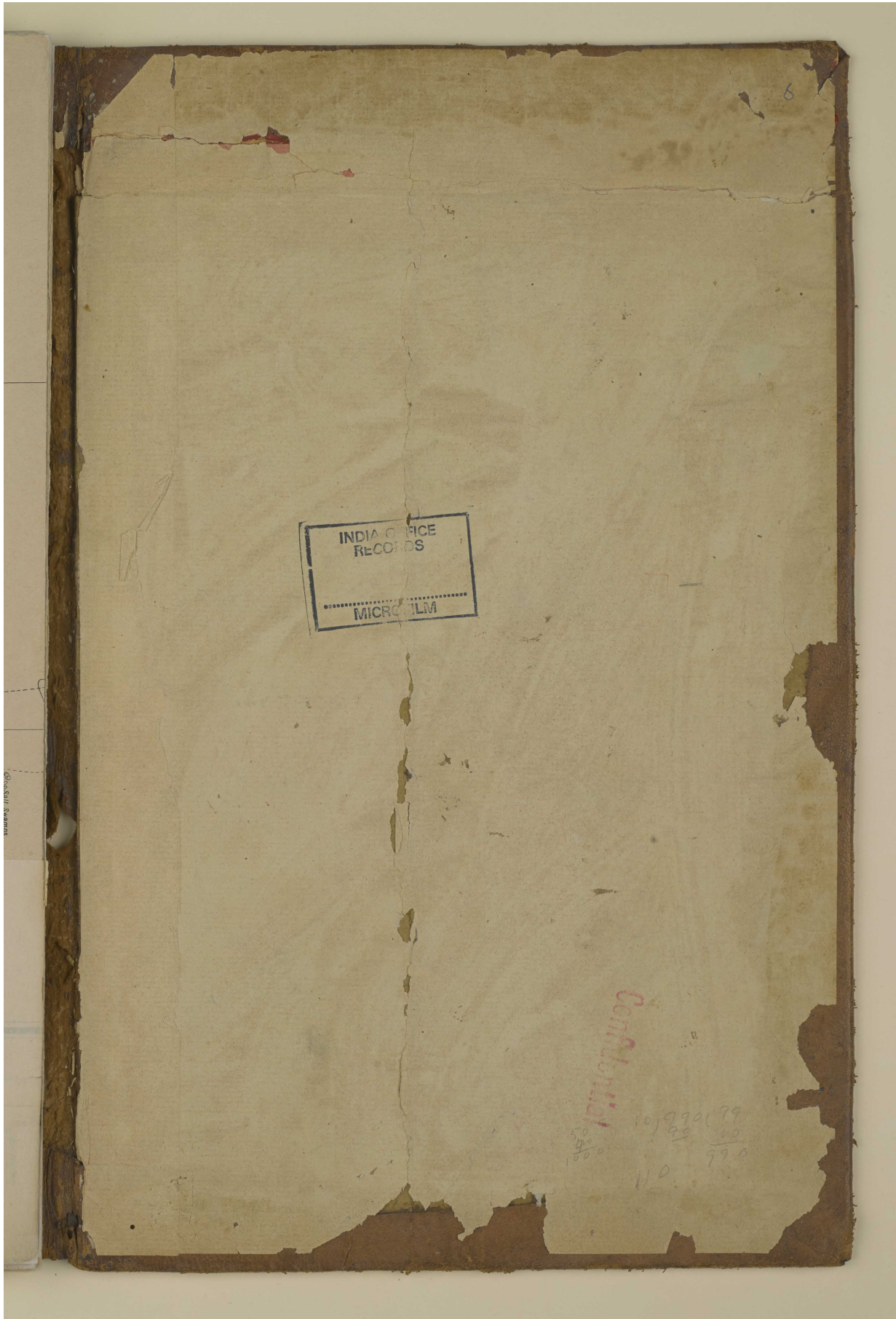
'File 73/7 II Annex (D 22) Map showing limits of Koweit principality' [4v]
(15/18)



'File 73/7 II Annex (D 22) Map showing limits of Koweit principality' [4v]
(16/18)



'File 73/7 II Annex (D 22) Map showing limits of Koweit principality' [back-i]
(17/18)



'File 73/7 II Annex (D 22) Map showing limits of Koweit principality' [back]
(18/18)

